

# Converting Colors

$Yxy(38.6613, 0.3546, 0.3364)$

Have a look what the booklet for  
Yxy(38.6613, 0.3546, 0.3364)  
contains.

<b>Yxy(38.8319, 0.3551, 0.3370)</b> .....	3
<b><i>Conversions</i></b> .....	4
<b><i>Details</i></b> .....	6
<b><i>Harmonies</i></b> .....	12
<b><i>Previews</i></b> .....	24
<b><i>Color Blindness Simulation</i></b> .....	27
<b><i>CSS Examples</i></b> .....	30

# Color

**Yxy(38.8319, 0.3551, 0.3370)**

# Conversions

## Conversions Part 1

Format	Color
Hex	C49F99
RGB	196, 159, 153
RGB Percent	77%, 62%, 60%
CMY	0.2313, 0.3765, 0.4000
CMYK	0.00, 0.19, 0.22, 0.23
HSL	8°, 27%, 68%
HSV	8°, 22%, 77%
XYZ	40.9175, 38.8319, 35.4788
YIQ	169.3790, 23.9780, 5.9780

# Conversions

## Conversions Part 2

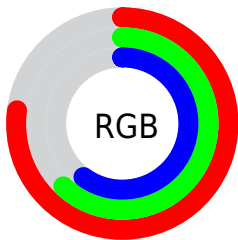
<b>Format</b>	<b>Color</b>
<b>R<sub>YB</sub></b>	196, 160, 153
Decimal	12885913
CIE <sub>Lab</sub>	68.63, 12.76, 8.29
CIE <sub>LCh</sub>	69, 15.212, 33.010
Yxy	38.8319, 0.3551, 0.3370
Android (android.graphics.Color)	4291075993 (0xFFC49F99)
YUV	169.3790, -8.0748, 23.3466
Hunter-Lab	62.3152, 8.1553, 9.8643

# Details

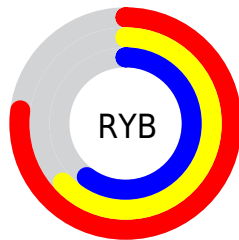
The Yxy color **38.8319, 0.3551, 0.3370** is a light color, and the websafe version is hex **CC9999**. A complement of this color would be **47.6018, 0.2799, 0.3208**, and the grayscale version is **39.9074, 0.3127, 0.3290**.

A 20% lighter version of the original color is **73.4808, 0.3470, 0.3363**, and **17.2255, 0.3693, 0.3381** is the 20% darker color. If you saturate the color by 10%, you get **32.8257, 0.3814, 0.3409**, and if you desaturate by 10%, it is **45.7402, 0.3335, 0.3332**.

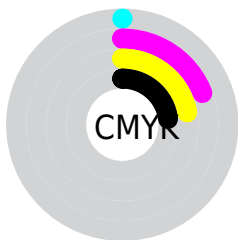
# Distribution



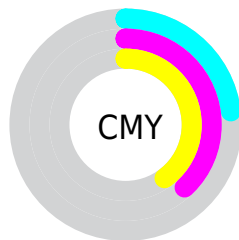
- Red (77%)
- Green (62%)
- Blue (60%)



- Red (77%)
- Yellow (63%)
- Blue (60%)



- Cyan (0%)
- Magenta (19%)
- Yellow (22%)
- Black (23%)




- Cyan (23%)
- Magenta (38%)
- Yellow (40%)


# Brightness & Saturation Gradients

These gradients show how the Yxy color 38.8319, 0.3551, 0.3370 changes by changing the brightness by 10 percent. The first figure shows a shift by +10% for each color and the second figure -10%.


Similar to the brightness gradients but the following saturation gradients show a change of the Yxy color 38.8319, 0.3551, 0.3370 by changing the saturation by 10% instead.




 38.8319, 0.3551,  
0.3370


 38.8319, 0.3551,  
0.3370


341.1753, 0.3331,  
0.3332

 26.6290, 0.3609,  
0.3379


 73.3814, 0.3469,  
0.3357

 17.2948, 0.3684,  
0.3389


 96.4969, 0.3439,  
0.3352

 10.4449, 0.3788,  
0.3402


124.0186, 0.3414,  
0.3347

 5.6949, 0.3938,  
0.3418

156.3310, 0.3392,  
0.3344

 2.6605, 0.4176,  
0.3435

193.8184, 0.3374,  
0.3340

 0.9572, 0.4742,  
0.3549

236.8654, 0.3358,

 0.0000, 1.0000,

0.3337

0.0000

285.8562, 0.3343,  
0.3335

0.0000, 0.0000,  
0.0000

38.8319, 0.3551,  
0.3370

38.8319, 0.3551,  
0.3370

32.8257, 0.3814,  
0.3409

45.7402, 0.3335,  
0.3332

27.6793, 0.4130,  
0.3447

53.5804, 0.3158,  
0.3297

23.3548, 0.4500,  
0.3480

62.3870, 0.3013,  
0.3264

19.8093, 0.4917,  
0.3502

72.1917, 0.2893,  
0.3234

16.9962, 0.5354,  
0.3506

83.0244, 0.2795,  
0.3207

■ 14.8637, 0.5765,  
0.3486

■ 90.4788, 0.2784,  
0.3289

■ 13.3531, 0.6093,  
0.3440

■ 12.5358, 0.6278,  
0.3397

# Harmonies

## Analogous

The Analogous color harmony consists of three colors that are next to each other on the color wheel.



38.8319, 0.3415, 0.3179



38.8319, 0.3551, 0.3370



38.8319, 0.3568, 0.3548

# Triad

The Triadic color harmony groups three colors that are evenly spaced from another and form a triangle on the color wheel.



38.8319, 0.3551, 0.3370



38.8319, 0.3041, 0.3584



38.8319, 0.2796, 0.2922

# Complementary

The Complementary color scheme is a pair of colors which are on the opposite of each other on the color wheel.



38.8319, 0.3551, 0.3370



47.6018, 0.2799, 0.3208

# Split Complementary

Split-complementary colors differ from the complementary color scheme. The scheme consists of three colors, the original color and two neighbors of the complement color.



38.8319, 0.2704, 0.3013



38.8319, 0.3551, 0.3370



38.8319, 0.2842, 0.3397

# Square

The Square scheme is like the rectangle color scheme, but the four colors are evenly spaced on the color wheel.



38.8319, 0.3551, 0.3370



38.8319, 0.3268, 0.3684



38.8319, 0.2721, 0.3185



38.8319, 0.2976, 0.2927



# Rectangle

The Rectangle color scheme consists of four colors that form a rectangle on the color wheel.



38.8319, 0.3551, 0.3370



38.8319, 0.3510, 0.3637



38.8319, 0.2721, 0.3185



38.8319, 0.2754, 0.2942

# Sweetspot

The Sweet Spot groups the original color and five complimentary colors.



38.8337, 0.3551, 0.3370



89.4884, 0.3245, 0.3315



38.2542, 0.3204, 0.2819



18.9690, 0.3256, 0.3317



0.0000, 0.0000, 0.0000



21.4041, 0.3127, 0.3290



# Same Dimension

The Same Dimension uses a secret algorithm to generate beautiful new colors.



38.8337, 0.3551, 0.3370



65.2766, 0.3662, 0.3387



46.7827, 0.3494, 0.3641



10.2990, 0.3286, 0.3323



8.1285, 0.6261, 0.3411



0.4260, 0.5909, 0.3690



# Inverse Universe

The Inverse Universe completely reimagines the original color for something new.



47.6018, 0.2799, 0.3208



83.7731, 0.2736, 0.3190



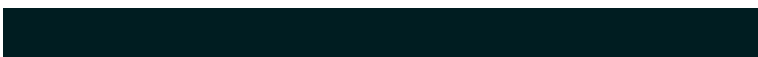
39.0538, 0.2778, 0.2912



11.1816, 0.2984, 0.3257



20.8208, 0.2124, 0.2848

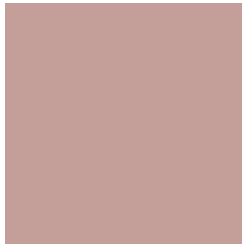


0.9668, 0.2154, 0.2956



# Previews

## White Background



This preview shows how the Yxy color 38.8319, 0.3551, 0.3370 looks on a white background.

## Color Contrast Check

Large Text (above 18pt) WCAG AA × Fail

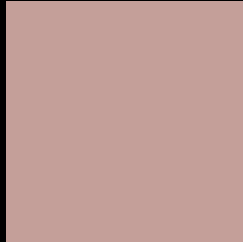
Any Text WCAG AA × Fail

Large Text (above 18pt) WCAG AAA × Fail

Any Text WCAG AAA × Fail



# Black Background



This preview shows how the Yxy color 38.8319, 0.3551, 0.3370 looks on a black background.

## Color Contrast Check

Large Text (above 18pt) WCAG AA ✓ Pass

Any Text WCAG AA ✓ Pass

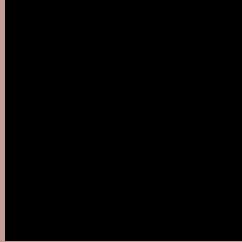
Large Text (above 18pt) WCAG AAA ✓ Pass

Any Text WCAG AAA ✓ Pass

If you want to check with other color combinations, try the [Color Contrast Checker](#).

**Yxy 38.8319, 0.3551, 0.3370**

## Background



This preview shows how black text looks on a background with the Yxy color 38.8319, 0.3551, 0.3370.



This preview shows how white text looks on a background with the Yxy color 38.8319, 0.3551, 0.3370.

# Color Blindness Simulation

Color vision deficiency is a very complex topic, and I could not describe the different causes any better than Wikipedia does, so if you want to learn more, you should check out their [article about color blindness](#).

## Dichromacy



### Original Color

38.8319, 0.3551, 0.3370

### Protanopia

38.9560, 0.3271, 0.3431

### Deuteranopia

38.9594, 0.3473, 0.3412



## Tritanopia

38.9843, 0.3419, 0.3136

# Trichromacy



## Original Color

38.8319, 0.3551, 0.3370

## Protanomaly

38.7750, 0.3362, 0.3401

## Deuteranomaly

38.9961, 0.3505, 0.3398

## Tritanomaly

38.9684, 0.3466, 0.3226

# Monochromacy



## Original Color

38.8319, 0.3551, 0.3370

## Achromatopsia

39.6755, 0.3127, 0.3290

## Achromatomaly

39.1383, 0.3277, 0.3318

# CSS Examples

## Text

The CSS property to change the color of the text to Yxy 38.8319, 0.3551, 0.3370 is called "color". The color property can be set on classes, ids or directly on the HTML element.

This example shows how text in the color `rgb(196, 159, 153)` looks like.

```
.text, #text, p{  
    color:rgb(196, 159, 153)  
}
```

If you want to add a text shadow in that color use the text-shadow property, you can generate a text shadow directly with our [CSS Text Shadow Generator](#).

Here you see how black text with a 4 pixel rgb(196, 159, 153) colored shadow looks like.

```
.shadow{ text-shadow: 4px 4px 2px rgb(196, 159, 153) }
```

## Border

The CSS property to change the border of an element to Yxy 38.8319, 0.3551, 0.3370 is called "border". The border property can be set on classes, ids or directly on the HTML element.

This example shows the color as border, it can be applied via the CSS property "border" or "border-color".

```
.border, #border, table{ border:4px solid rgb(196, 159, 153) }
```

If only the border color should be changed use the property `border-color`.

```
.border{ border-color:rgb(196, 159, 153) }
```

If you want to add a box shadow in that color use:

Here you see how a box with a 4 pixel `rgb(196, 159, 153)` colored shadow looks like.

```
.boxshadow{ -moz-box-shadow:4px 4px 4px  
4px rgb(196, 159, 153); -webkit-box-  
shadow:4px 4px 4px 4px rgb(196, 159, 153);  
box-shadow:4px 4px 4px 4px rgb(196, 159,  
153) }
```



# Background

The CSS property to change the background color of an element to Yxy 38.8319, 0.3551, 0.3370 is called "background". The background property can be set on classes, ids or directly on the HTML element.

```
.background, #background, body{  
background: rgb(196, 159, 153) }
```

If only the background color should be changed can be used:

```
.background{ background-color: rgb(196,  
159, 153) }
```

This example shows the color as background, it is applied via the CSS property "background".

To optimize and compress your CSS code, you can use our [online CSS compressor and optimizer](#) based on csstidy. If you want to create a linear or radial gradient as background or border, check our [CSS Gradient Generator](#).

Hey! You found this booklet interesting? Support Converting Colors with the new Membership Option!

The pro membership hides all ads, plus gives you double the colors in the color bucket, and more awesome pro features!

**[Learn more, Memberships starting at \\$2.50/m!](#)**

**Follow me  
on Twitter!**

@ConvertingColor