

Converting Colors

$Yxy(38.7732, 0.3620, 0.3449)$

Have a look what the booklet for
Yxy(38.7732, 0.3620, 0.3449)
contains.

Yxy(38.7732, 0.3620, 0.3449)	3
Conversions	4
Details	6
Harmonies	12
Previews	24
Color Blindness Simulation	27
CSS Examples	30

Color

Yxy(38.7732, 0.3620, 0.3449)

Conversions

Conversions Part 1

Format	Color
Hex	C59F93
RGB	197, 159, 147
RGB Percent	77%, 62%, 58%
CMY	0.2274, 0.3765, 0.4235
CMYK	0.00, 0.19, 0.25, 0.23
HSL	14°, 30%, 67%
HSV	14°, 25%, 77%
XYZ	40.6956, 38.7732, 32.9499
YIQ	168.9940, 26.5000, 4.3240

Conversions

Conversions Part 2

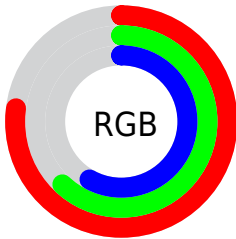
Format	Color
RYB	197, 163, 147
Decimal	12951443
CIELab	68.59, 12.26, 11.56
CIElCh	69, 16.851, 43.336
Yxy	38.7732, 0.3620, 0.3449
Android (android.graphics.Color)	4291141523 (0xFFC59F93)
YUV	168.9940, -10.8430, 24.5613
Hunter-Lab	62.2681, 7.6901, 12.2137

Details

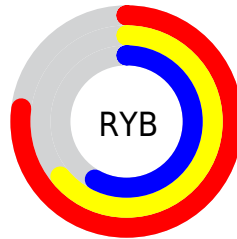
The Yxy color **38.7732, 0.3620, 0.3449** is a light color, and the websafe version is hex **CC9999**. A complement of this color would be **44.9530, 0.2744, 0.3125**, and the grayscale version is **39.7200, 0.3127, 0.3290**.

A 20% lighter version of the original color is **73.3810, 0.3522, 0.3424**, and **17.3204, 0.3773, 0.3508** is the 20% darker color. If you saturate the color by 10%, you get **33.3640, 0.3884, 0.3515**, and if you desaturate by 10%, it is **44.9165, 0.3398, 0.3384**.

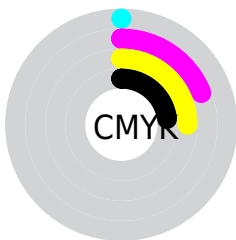
Distribution



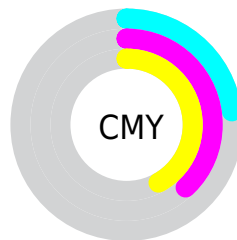
- Red (77%)
- Green (62%)
- Blue (58%)



- Red (77%)
- Yellow (64%)
- Blue (58%)



- Cyan (0%)
- Magenta (19%)
- Yellow (25%)
- Black (23%)





- Cyan (23%)
- Magenta (38%)
- Yellow (42%)

Brightness & Saturation Gradients


These gradients show how the Yxy color 38.7732, 0.3620, 0.3449 changes by changing the brightness by 10 percent. The first figure shows a shift by +10% for each color and the second figure -10%.


Similar to the brightness gradients but the following saturation gradients show a change of the Yxy color 38.7732, 0.3620, 0.3449 by changing the saturation by 10% instead.


 38.7732, 0.3620,
0.3449


 38.7732, 0.3620,
0.3449


340.9253, 0.3364,
0.3372

 26.5833, 0.3687,
0.3467


 73.2917, 0.3525,
0.3422

 17.2605, 0.3775,
0.3490


 96.3892, 0.3490,
0.3411

 10.4204, 0.3895,
0.3519


123.8913, 0.3460,
0.3402

 5.6786, 0.4069,
0.3556

156.1824, 0.3435,
0.3394

 2.6506, 0.4341,
0.3604

193.6470, 0.3414,
0.3388

 0.9522, 0.5160,
0.3910

236.6694, 0.3395,

 0.0000, 1.0000,

0.3382

0.0000

285.6340, 0.3378,
0.3376

0.0000, 0.0000,
0.0000

38.7732, 0.3620,
0.3449

38.7732, 0.3620,
0.3449

33.3640, 0.3884,
0.3515

44.9165, 0.3398,
0.3384

28.6560, 0.4193,
0.3579

51.8147, 0.3214,
0.3322

24.6215, 0.4546,
0.3633

59.4944, 0.3059,
0.3264

21.2289, 0.4933,
0.3668

67.9793, 0.2931,
0.3211

18.4440, 0.5329,
0.3674

77.2920, 0.2823,
0.3163

■ 16.2293, 0.5697,
0.3642

■ 86.7778, 0.2784,
0.3225

■ 14.5422, 0.5992,
0.3570

■ 90.6131, 0.2789,
0.3289

■ 13.9216, 0.6106,
0.3534

Harmonies

Analogous

The Analogous color harmony consists of three colors that are next to each other on the color wheel.



38.7732, 0.3511, 0.3238



38.7732, 0.3620, 0.3449



38.7732, 0.3590, 0.3630

Triad

The Triadic color harmony groups three colors that are evenly spaced from another and form a triangle on the color wheel.



38.7732, 0.3620, 0.3449



38.7732, 0.2949, 0.3554



38.7732, 0.2819, 0.2873

Complementary

The Complementary color scheme is a pair of colors which are on the opposite of each other on the color wheel.



38.7732, 0.3620, 0.3449



44.9530, 0.2744, 0.3125

Split Complementary

Split-complementary colors differ from the complementary color scheme. The scheme consists of three colors, the original color and two neighbors of the complement color.



38.7732, 0.2682, 0.2937



38.7732, 0.3620, 0.3449



38.7732, 0.2754, 0.3327

Square

The Square scheme is like the rectangle color scheme, but the four colors are evenly spaced on the color wheel.



38.7732, 0.3620, 0.3449



38.7732, 0.3196, 0.3704



38.7732, 0.2658, 0.3099



38.7732, 0.3042, 0.2915

Rectangle

The Rectangle color scheme consists of four colors that form a rectangle on the color wheel.



38.7732, 0.3620, 0.3449



38.7732, 0.3496, 0.3708



38.7732, 0.2658, 0.3099



38.7732, 0.2762, 0.2883

Sweetspot

The Sweet Spot groups the original color and five complimentary colors.



38.7750, 0.3620, 0.3449



89.2533, 0.3261, 0.3338



36.2640, 0.3266, 0.2803



18.6933, 0.3288, 0.3348



0.0000, 0.0000, 0.0000



21.4041, 0.3127, 0.3290

Same Dimension

The Same Dimension uses a secret algorithm to generate beautiful new colors.



38.7750, 0.3620, 0.3449



64.3472, 0.3748, 0.3483



48.1312, 0.3544, 0.3760



11.0426, 0.3284, 0.3346



9.2647, 0.6084, 0.3551



0.5553, 0.5665, 0.3884

Inverse Universe

The Inverse Universe completely reimagines the original color for something new.



44.9530, 0.2744, 0.3125



77.1250, 0.2671, 0.3087



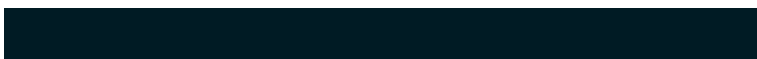
35.5008, 0.2712, 0.2771



11.6203, 0.2984, 0.3233



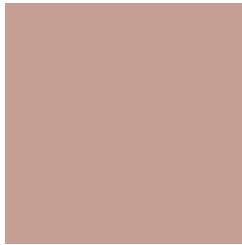
17.0940, 0.2029, 0.2504



0.9163, 0.2080, 0.2687

Previews

White Background



This preview shows how the Yxy color 38.7732, 0.3620, 0.3449 looks on a white background.

Color Contrast Check

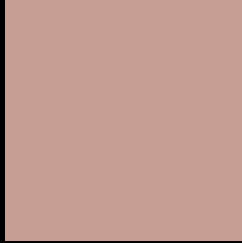
Large Text (above 18pt) WCAG AA × Fail

Any Text WCAG AA × Fail

Large Text (above 18pt) WCAG AAA × Fail

Any Text WCAG AAA × Fail

Black Background



This preview shows how the Yxy color 38.7732, 0.3620, 0.3449 looks on a black background.

Color Contrast Check

Large Text (above 18pt) WCAG AA ✓ Pass

Any Text WCAG AA ✓ Pass

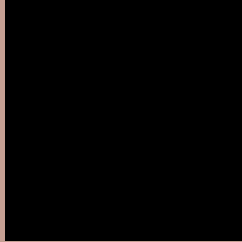
Large Text (above 18pt) WCAG AAA ✓ Pass

Any Text WCAG AAA ✓ Pass

If you want to check with other color combinations, try the [Color Contrast Checker](#).

Yxy 38.7732, 0.3620, 0.3449

Background



This preview shows how black text looks on a background with the Yxy color 38.7732, 0.3620, 0.3449.



This preview shows how white text looks on a background with the Yxy color 38.7732, 0.3620, 0.3449.

Color Blindness Simulation

Color vision deficiency is a very complex topic, and I could not describe the different causes any better than Wikipedia does, so if you want to learn more, you should check out their [article about color blindness](#).

Dichromacy



Original Color

38.7732, 0.3620, 0.3449

Protanopia

38.8705, 0.3334, 0.3515

Deuteranopia

38.6727, 0.3553, 0.3479



Tritanopia

38.7462, 0.3441, 0.3136

Trichromacy



Original Color

38.7732, 0.3620, 0.3449

Protanomaly

38.6980, 0.3427, 0.3484

Deuteranomaly

38.5857, 0.3576, 0.3465

Tritanomaly

38.6578, 0.3507, 0.3252

Monochromacy



Original Color

38.7732, 0.3620, 0.3449

Achromatopsia

39.6755, 0.3127, 0.3290

Achromatomaly

39.0672, 0.3295, 0.3345

CSS Examples

Text

The CSS property to change the color of the text to Yxy 38.7732, 0.3620, 0.3449 is called "color". The color property can be set on classes, ids or directly on the HTML element.

This example shows how text in the color `rgb(197, 159, 147)` looks like.

```
.text, #text, p{  
    color:rgb(197, 159, 147)  
}
```

If you want to add a text shadow in that color use the text-shadow property, you can generate a text shadow directly with our [CSS Text Shadow Generator](#).

Here you see how black text with a 4 pixel rgb(197, 159, 147) colored shadow looks like.

```
.shadow{ text-shadow: 4px 4px 2px rgb(197, 159, 147) }
```

Border

The CSS property to change the border of an element to Yxy 38.7732, 0.3620, 0.3449 is called "border". The border property can be set on classes, ids or directly on the HTML element.

This example shows the color as border, it can be applied via the CSS property "border" or "border-color".

```
.border, #border, table{ border:4px solid rgb(197, 159, 147) }
```

If only the border color should be changed use the property `border-color`.

```
.border{ border-color:rgb(197, 159, 147) }
```

If you want to add a box shadow in that color use:

Here you see how a box with a 4 pixel `rgb(197, 159, 147)` colored shadow looks like.

```
.boxshadow{ -moz-box-shadow:4px 4px 4px  
4px rgb(197, 159, 147); -webkit-box-  
shadow:4px 4px 4px 4px rgb(197, 159, 147);  
box-shadow:4px 4px 4px 4px rgb(197, 159,  
147) }
```


Background

The CSS property to change the background color of an element to Yxy 38.7732, 0.3620, 0.3449 is called "background". The background property can be set on classes, ids or directly on the HTML element.

```
.background, #background, body{  
background: rgb(197, 159, 147) }
```

If only the background color should be changed can be used:

```
.background{ background-color: rgb(197,  
159, 147) }
```

This example shows the color as background, it is applied via the CSS property "background".

To optimize and compress your CSS code, you can use our [online CSS compressor and optimizer](#) based on csstidy. If you want to create a linear or radial gradient as background or border, check our [CSS Gradient Generator](#).

Hey! You found this booklet interesting? Support Converting Colors with the new Membership Option!

The pro membership hides all ads, plus gives you double the colors in the color bucket, and more awesome pro features!

[Learn more, Memberships starting at \\$2.50/m!](#)

**Follow me
on Twitter!**

@ConvertingColor