

Converting Colors

$Yxy(38.9246, 0.3330, 0.3240)$

Have a look what the booklet for
Yxy(38.9246, 0.3330, 0.3240)
contains.

Yxy(38.9964, 0.3331, 0.3250)	3
Conversions	4
Details	6
Harmonies	12
Previews	24
Color Blindness Simulation	27
CSS Examples	30

Color

Yxy(38.9964, 0.3331, 0.3250)

Conversions

Conversions Part 1

Format	Color
Hex	BAA2A5
RGB	186, 162, 165
RGB Percent	73%, 64%, 65%
CMY	0.2705, 0.3647, 0.3529
CMYK	0.00, 0.13, 0.11, 0.27
HSL	352°, 15%, 68%
HSV	352°, 13%, 73%
XYZ	39.9683, 38.9964, 41.0242
YIQ	169.5180, 13.3410, 6.0210

Conversions

Conversions Part 2

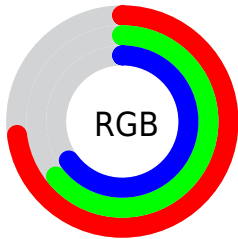
Format	Color
R _Y B	186, 162, 165
Decimal	12231333
CIE Lab	68.75, 9.30, 1.67
CIE LCh	69, 9.448, 10.159
Yxy	38.9964, 0.3331, 0.3250
Android (android.graphics.Color)	4290421413 (0xFFBAA2A5)
YUV	169.5180, -2.2274, 14.4547
Hunter-Lab	62.4471, 4.9638, 4.7628

Details

The Yxy color **38.9964, 0.3331, 0.3250** is a light color, and the websafe version is hex **999999**. A complement of this color would be **46.2314, 0.2955, 0.3331**, and the grayscale version is **39.9553, 0.3127, 0.3290**.

A 20% lighter version of the original color is **73.6703, 0.3289, 0.3259**, and **17.3307, 0.3403, 0.3235** is the 20% darker color. If you saturate the color by 10%, you get **32.3670, 0.3533, 0.3217**, and if you desaturate by 10%, it is **46.6742, 0.3168, 0.3281**.

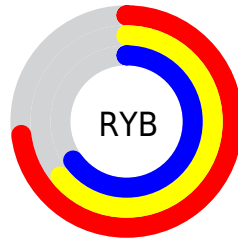
Distribution



Red (73%)

Green (64%)

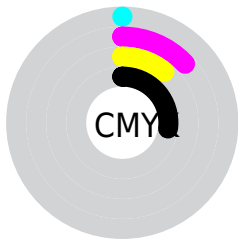
Blue (65%)



Red (73%)

Yellow (64%)

Blue (65%)

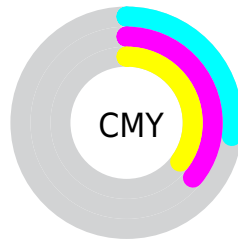


Cyan (0%)

Magenta (13%)

Yellow (11%)

Black (27%)



Cyan (27%)

Magenta (36%)

Yellow (35%)

Brightness & Saturation Gradients


These gradients show how the Yxy color 38.9964, 0.3331, 0.3250 changes by changing the brightness by 10 percent. The first figure shows a shift by +10% for each color and the second figure -10%.


Similar to the brightness gradients but the following saturation gradients show a change of the Yxy color 38.9964, 0.3331, 0.3250 by changing the saturation by 10% instead.

 38.9964, 0.3331,
0.3250


 38.9964, 0.3331,
0.3250


341.8752, 0.3226,
0.3271

 26.7569, 0.3358,
0.3244


 73.6328, 0.3292,
0.3258

 17.3908, 0.3394,
0.3237


 96.7986, 0.3278,
0.3261

 10.5135, 0.3444,
0.3226


124.3752, 0.3265,
0.3263

 5.7407, 0.3515,
0.3211

156.7470, 0.3255,
0.3265

 2.6881, 0.3627,
0.3186

194.2986, 0.3246,
0.3267

 0.9711, 0.3832,
0.3137

237.4142, 0.3239,

 0.0000, 1.0000,

0.3269

0.0000

286.4783, 0.3232,
0.3270

■ 0.0000, 0.0000,
0.0000

■ 38.9964, 0.3331,
0.3250

■ 38.9964, 0.3331,
0.3250

■ 32.3670, 0.3533,
0.3217

■ 46.6742, 0.3168,
0.3281

■ 26.7354, 0.3782,
0.3183

■ 55.4376, 0.3037,
0.3310

■ 22.0550, 0.4086,
0.3151

■ 65.3284, 0.2931,
0.3337

■ 18.2730, 0.4447,
0.3124

■ 76.3847, 0.2845,
0.3361

■ 15.3317, 0.4860,
0.3108

■ 88.6377, 0.2774,
0.3382

■ 13.1668, 0.5300,
0.3110

■ 89.1832, 0.2731,
0.3289

■ 11.7043, 0.5720,
0.3133

■ 10.8561, 0.6063,
0.3179

■ 10.5066, 0.6242,
0.3212

Harmonies

Analogous

The Analogous color harmony consists of three colors that are next to each other on the color wheel.



38.9964, 0.3209, 0.3141



38.9964, 0.3331, 0.3250



38.9964, 0.3398, 0.3371

Triad

The Triadic color harmony groups three colors that are evenly spaced from another and form a triangle on the color wheel.



38.9964, 0.3331, 0.3250



38.9964, 0.3183, 0.3522



38.9964, 0.2870, 0.3100

Complementary

The Complementary color scheme is a pair of colors which are on the opposite of each other on the color wheel.



38.9964, 0.3331, 0.3250



46.2314, 0.2955, 0.3331

Split Complementary

Split-complementary colors differ from the complementary color scheme. The scheme consists of three colors, the original color and two neighbors of the complement color.



38.9964, 0.2864, 0.3199



38.9964, 0.3331, 0.3250



38.9964, 0.3042, 0.3447

Square

The Square scheme is like the rectangle color scheme, but the four colors are evenly spaced on the color wheel.



38.9964, 0.3331, 0.3250



38.9964, 0.3311, 0.3532



38.9964, 0.2926, 0.3326



38.9964, 0.2943, 0.3055

Rectangle

The Rectangle color scheme consists of four colors that form a rectangle on the color wheel.



38.9964, 0.3331, 0.3250



38.9964, 0.3402, 0.3444



38.9964, 0.2926, 0.3326



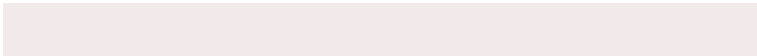
38.9964, 0.2860, 0.3128

Sweetspot

The Sweet Spot groups the original color and five complimentary colors.



38.9981, 0.3331, 0.3250



82.8783, 0.3185, 0.3278



39.4305, 0.3112, 0.2973



18.0078, 0.3197, 0.3276



95.5105, 0.3127, 0.3290



19.5994, 0.3127, 0.3290

Same Dimension

The Same Dimension uses a secret algorithm to generate beautiful new colors.



38.9981, 0.3331, 0.3250



66.4372, 0.3394, 0.3239



42.1044, 0.3344, 0.3408



9.0301, 0.3268, 0.3262



7.0721, 0.6220, 0.3200



0.2553, 0.5683, 0.2904

Inverse Universe

The Inverse Universe completely reimagines the original color for something new.



38.9981, 0.3331, 0.3250



66.4372, 0.3394, 0.3239



42.7575, 0.2930, 0.3169



9.0301, 0.3268, 0.3262



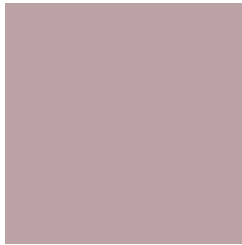
7.0721, 0.6220, 0.3200



0.2553, 0.5683, 0.2904

Previews

White Background



This preview shows how the Yxy color 38.9964, 0.3331, 0.3250 looks on a white background.

Color Contrast Check

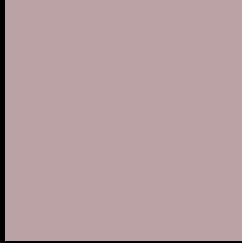
Large Text (above 18pt) WCAG AA × Fail

Any Text WCAG AA × Fail

Large Text (above 18pt) WCAG AAA × Fail

Any Text WCAG AAA × Fail

Black Background



This preview shows how the Yxy color 38.9964, 0.3331, 0.3250 looks on a black background.

Color Contrast Check

Large Text (above 18pt) WCAG AA ✓ Pass

Any Text WCAG AA ✓ Pass

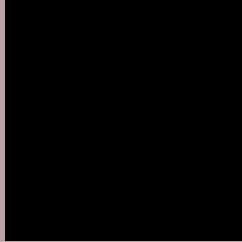
Large Text (above 18pt) WCAG AAA ✓ Pass

Any Text WCAG AAA ✓ Pass

If you want to check with other color combinations, try the [Color Contrast Checker](#).

Yxy 38.9964, 0.3331, 0.3250

Background



This preview shows how black text looks on a background with the Yxy color 38.9964, 0.3331, 0.3250.



This preview shows how white text looks on a background with the Yxy color 38.9964, 0.3331, 0.3250.

Color Blindness Simulation

Color vision deficiency is a very complex topic, and I could not describe the different causes any better than Wikipedia does, so if you want to learn more, you should check out their [article about color blindness](#).

Dichromacy



Original Color

38.9964, 0.3331, 0.3250

Protanopia

39.1225, 0.3155, 0.3276

Deuteranopia

38.8716, 0.3321, 0.3250



Tritanopia

39.0717, 0.3268, 0.3131

Trichromacy



Original Color

38.9964, 0.3331, 0.3250

Protanomaly

38.9304, 0.3213, 0.3263

Deuteranomaly

38.8716, 0.3321, 0.3250

Tritanomaly

38.9568, 0.3296, 0.3171

Monochromacy



Original Color

38.9964, 0.3331, 0.3250

Achromatopsia

40.1978, 0.3127, 0.3290

Achromatomaly

39.6947, 0.3202, 0.3277

CSS Examples

Text

The CSS property to change the color of the text to Yxy 38.9964, 0.3331, 0.3250 is called "color". The color property can be set on classes, ids or directly on the HTML element.

This example shows how text in the color `rgb(186, 162, 165)` looks like.

```
.text, #text, p{  
    color:rgb(186, 162, 165)  
}
```

If you want to add a text shadow in that color use the text-shadow property, you can generate a text shadow directly with our [CSS Text Shadow Generator](#).

Here you see how black text with a 4 pixel rgb(186, 162, 165) colored shadow looks like.

```
.shadow{ text-shadow: 4px 4px 2px rgb(186, 162, 165) }
```

Border

The CSS property to change the border of an element to Yxy 38.9964, 0.3331, 0.3250 is called "border". The border property can be set on classes, ids or directly on the HTML element.

This example shows the color as border, it can be applied via the CSS property "border" or "border-color".

```
.border, #border, table{ border:4px solid rgb(186, 162, 165) }
```

If only the border color should be changed use the property `border-color`.

```
.border{ border-color:rgb(186, 162, 165) }
```

If you want to add a box shadow in that color use:

Here you see how a box with a 4 pixel `rgb(186, 162, 165)` colored shadow looks like.

```
.boxshadow{ -moz-box-shadow:4px 4px 4px  
4px rgb(186, 162, 165); -webkit-box-  
shadow:4px 4px 4px 4px rgb(186, 162, 165);  
box-shadow:4px 4px 4px 4px rgb(186, 162,  
165) }
```


Background

The CSS property to change the background color of an element to Yxy 38.9964, 0.3331, 0.3250 is called "background". The background property can be set on classes, ids or directly on the HTML element.

```
.background, #background, body{  
background: rgb(186, 162, 165) }
```

If only the background color should be changed can be used:

```
.background{ background-color: rgb(186,  
162, 165) }
```

This example shows the color as background, it is applied via the CSS property "background".

To optimize and compress your CSS code, you can use our [online CSS compressor and optimizer](#) based on csstidy. If you want to create a linear or radial gradient as background or border, check our [CSS Gradient Generator](#).

Hey! You found this booklet interesting? Support Converting Colors with the new Membership Option!

The pro membership hides all ads, plus gives you double the colors in the color bucket, and more awesome pro features!

[Learn more, Memberships starting at \\$2.50/m!](#)

**Follow me
on Twitter!**

@ConvertingColor