

Converting Colors

$Yxy(39.1444, 0.3558, 0.3397)$

Have a look what the booklet for
Yxy(39.1444, 0.3558, 0.3397)
contains.

Yxy(39.1444, 0.3558, 0.3397)	3
Conversions	4
Details	6
Harmonies	12
Previews	24
Color Blindness Simulation	27
CSS Examples	30

Color

Yxy(39.1444, 0.3558, 0.3397)

Conversions

Conversions Part 1

Format	Color
Hex	C4A098
RGB	196, 160, 152
RGB Percent	77%, 63%, 60%
CMY	0.2314, 0.3725, 0.4040
CMYK	0.00, 0.18, 0.22, 0.23
HSL	11°, 27%, 68%
HSV	11°, 22%, 77%
XYZ	40.9996, 39.1444, 35.0882
YIQ	169.8520, 24.0240, 5.1440

Conversions

Conversions Part 2

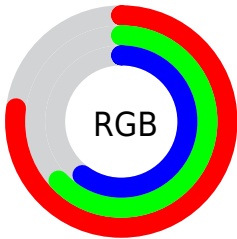
Format	Color
R_{YB}	196, 162, 152
Decimal	12886168
CIE _{Lab}	68.86, 12.03, 9.18
CIE _{LCh}	69, 15.137, 37.354
Yxy	39.1444, 0.3558, 0.3397
Android (android.graphics.Color)	4291076248 (0xFFC4A098)
YUV	169.8520, -8.8010, 22.9318
Hunter-Lab	62.5655, 7.4828, 10.5446

Details

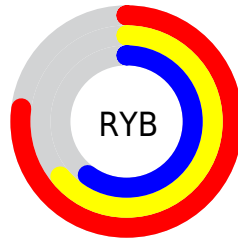
The Yxy color **39.1444, 0.3558, 0.3397** is a light color, and the websafe version is hex **CC9999**. A complement of this color would be **46.6042, 0.2790, 0.3180**, and the grayscale version is **40.1564, 0.3127, 0.3290**.

A 20% lighter version of the original color is **73.9398, 0.3475, 0.3383**, and **17.4155, 0.3702, 0.3417** is the 20% darker color. If you saturate the color by 10%, you get **33.3546, 0.3817, 0.3448**, and if you desaturate by 10%, it is **45.7596, 0.3343, 0.3348**.

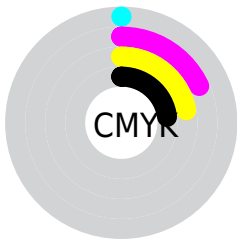
Distribution



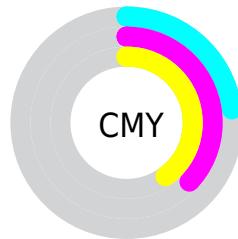
- Red (77%)
- Green (63%)
- Blue (60%)



- Red (77%)
- Yellow (64%)
- Blue (60%)



- Cyan (0%)
- Magenta (18%)
- Yellow (22%)
- Black (23%)




- Cyan (23%)
- Magenta (37%)
- Yellow (40%)

Brightness & Saturation Gradients


These gradients show how the Yxy color 39.1444, 0.3558, 0.3397 changes by changing the brightness by 10 percent. The first figure shows a shift by +10% for each color and the second figure -10%.


Similar to the brightness gradients but the following saturation gradients show a change of the Yxy color 39.1444, 0.3558, 0.3397 by changing the saturation by 10% instead.

 39.1444, 0.3558,
0.3397


 39.1444, 0.3558,
0.3397


342.5040, 0.3335,
0.3346

 26.8721, 0.3616,
0.3409


 73.8589, 0.3475,
0.3379

 17.4772, 0.3693,
0.3424


 97.0698, 0.3444,
0.3372

 10.5753, 0.3798,
0.3443


124.6957, 0.3419,
0.3366

 5.7820, 0.3950,
0.3467

157.1210, 0.3397,
0.3361

 2.7130, 0.4188,
0.3497

194.7301, 0.3378,
0.3356

 0.9838, 0.4773,
0.3649

237.9074, 0.3362,

 0.0000, 1.0000,

0.3352

0.0000

287.0372, 0.3347,
0.3349

■ 0.0000, 0.0000,
0.0000

■ 39.1444, 0.3558,
0.3397

■ 39.1444, 0.3558,
0.3397

■ 33.3546, 0.3817,
0.3448

■ 45.7596, 0.3343,
0.3348

■ 28.3526, 0.4126,
0.3498

■ 53.2255, 0.3166,
0.3301

■ 24.1056, 0.4485,
0.3541

■ 61.5727, 0.3019,
0.3258

■ 20.5765, 0.4887,
0.3571

■ 70.8289, 0.2898,
0.3219

■ 17.7250, 0.5307,
0.3578

■ 81.0205, 0.2798,
0.3183

■ 15.5068, 0.5705,
0.3555

■ 90.4746, 0.2784,
0.3289

■ 13.8718, 0.6030,
0.3500

■ 12.9837, 0.6213,
0.3449

Harmonies

Analogous

The Analogous color harmony consists of three colors that are next to each other on the color wheel.



39.1444, 0.3439, 0.3207



39.1444, 0.3558, 0.3397



39.1444, 0.3556, 0.3568

Triad

The Triadic color harmony groups three colors that are evenly spaced from another and form a triangle on the color wheel.



39.1444, 0.3558, 0.3397



39.1444, 0.3010, 0.3559



39.1444, 0.2819, 0.2920

Complementary

The Complementary color scheme is a pair of colors which are on the opposite of each other on the color wheel.



39.1444, 0.3558, 0.3397



46.6042, 0.2790, 0.3180

Split Complementary

Split-complementary colors differ from the complementary color scheme. The scheme consists of three colors, the original color and two neighbors of the complement color.



39.1444, 0.2714, 0.2997



39.1444, 0.3558, 0.3397



39.1444, 0.2821, 0.3366

Square

The Square scheme is like the rectangle color scheme, but the four colors are evenly spaced on the color wheel.



39.1444, 0.3558, 0.3397



39.1444, 0.3235, 0.3673



39.1444, 0.2715, 0.3158



39.1444, 0.3008, 0.2938

Rectangle

The Rectangle color scheme consists of four colors that form a rectangle on the color wheel.



39.1444, 0.3558, 0.3397



39.1444, 0.3488, 0.3649



39.1444, 0.2715, 0.3158



39.1444, 0.2773, 0.2935

Sweetspot

The Sweet Spot groups the original color and five complimentary colors.



39.1462, 0.3558, 0.3397



89.9449, 0.3244, 0.3322



37.8414, 0.3220, 0.2825



19.0743, 0.3255, 0.3325



0.0000, 0.0000, 0.0000



21.4041, 0.3127, 0.3290

Same Dimension

The Same Dimension uses a secret algorithm to generate beautiful new colors.



39.1462, 0.3558, 0.3397



65.5311, 0.3681, 0.3422



47.1781, 0.3500, 0.3668



10.3688, 0.3284, 0.3333



8.4361, 0.6192, 0.3465



0.4572, 0.5783, 0.3790

Inverse Universe

The Inverse Universe completely reimagines the original color for something new.



46.6042, 0.2790, 0.3180



81.4366, 0.2719, 0.3153



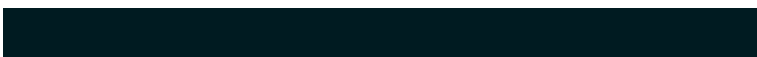
38.1656, 0.2767, 0.2881



11.1055, 0.2984, 0.3247



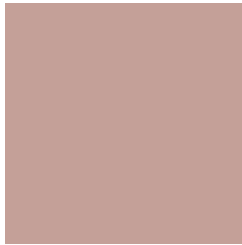
18.8776, 0.2084, 0.2702



0.8989, 0.2124, 0.2847

Previews

White Background



This preview shows how the Yxy color 39.1444, 0.3558, 0.3397 looks on a white background.

Color Contrast Check

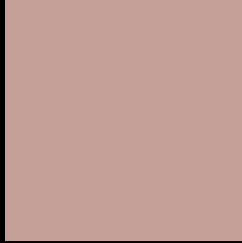
Large Text (above 18pt) WCAG AA × Fail

Any Text WCAG AA × Fail

Large Text (above 18pt) WCAG AAA × Fail

Any Text WCAG AAA × Fail

Black Background



This preview shows how the Yxy color 39.1444, 0.3558, 0.3397 looks on a black background.

Color Contrast Check

Large Text (above 18pt) WCAG AA ✓ Pass

Any Text WCAG AA ✓ Pass

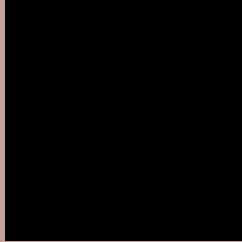
Large Text (above 18pt) WCAG AAA ✓ Pass

Any Text WCAG AAA ✓ Pass

If you want to check with other color combinations, try the [Color Contrast Checker](#).

Yxy 39.1444, 0.3558, 0.3397

Background



This preview shows how black text looks on a background with the Yxy color 39.1444, 0.3558, 0.3397.



This preview shows how white text looks on a background with the Yxy color 39.1444, 0.3558, 0.3397.

Color Blindness Simulation

Color vision deficiency is a very complex topic, and I could not describe the different causes any better than Wikipedia does, so if you want to learn more, you should check out their [article about color blindness](#).

Dichromacy



Original Color

39.1444, 0.3558, 0.3397

Protanopia

39.4042, 0.3287, 0.3458

Deuteranopia

39.1840, 0.3502, 0.3425



Tritanopia

39.0220, 0.3410, 0.3123

Trichromacy



Original Color

39.1444, 0.3558, 0.3397

Protanomaly

39.2219, 0.3379, 0.3428

Deuteranomaly

39.0942, 0.3525, 0.3411

Tritanomaly

38.9684, 0.3466, 0.3226

Monochromacy



Original Color

39.1444, 0.3558, 0.3397

Achromatopsia

40.1978, 0.3127, 0.3290

Achromatomaly

39.5005, 0.3276, 0.3332

CSS Examples

Text

The CSS property to change the color of the text to Yxy 39.1444, 0.3558, 0.3397 is called "color". The color property can be set on classes, ids or directly on the HTML element.

This example shows how text in the color `rgb(196, 160, 152)` looks like.

```
.text, #text, p{  
    color:rgb(196, 160, 152)  
}
```

If you want to add a text shadow in that color use the text-shadow property, you can generate a text shadow directly with our [CSS Text Shadow Generator](#).

Here you see how black text with a 4 pixel rgb(196, 160, 152) colored shadow looks like.

```
.shadow{ text-shadow: 4px 4px 2px rgb(196, 160, 152) }
```

Border

The CSS property to change the border of an element to Yxy 39.1444, 0.3558, 0.3397 is called "border". The border property can be set on classes, ids or directly on the HTML element.

This example shows the color as border, it can be applied via the CSS property "border" or "border-color".

```
.border, #border, table{ border:4px solid rgb(196, 160, 152) }
```

If only the border color should be changed use the property `border-color`.

```
.border{ border-color:rgb(196, 160, 152) }
```

If you want to add a box shadow in that color use:

Here you see how a box with a 4 pixel `rgb(196, 160, 152)` colored shadow looks like.

```
.boxshadow{ -moz-box-shadow:4px 4px 4px  
4px rgb(196, 160, 152); -webkit-box-  
shadow:4px 4px 4px 4px rgb(196, 160, 152);  
box-shadow:4px 4px 4px 4px rgb(196, 160,  
152) }
```


Background

The CSS property to change the background color of an element to Yxy 39.1444, 0.3558, 0.3397 is called "background". The background property can be set on classes, ids or directly on the HTML element.

```
.background, #background, body{  
background: rgb(196, 160, 152) }
```

If only the background color should be changed can be used:

```
.background{ background-color: rgb(196,  
160, 152) }
```

This example shows the color as background, it is applied via the CSS property "background".

To optimize and compress your CSS code, you can use our [online CSS compressor and optimizer](#) based on csstidy. If you want to create a linear or radial gradient as background or border, check our [CSS Gradient Generator](#).

Hey! You found this booklet interesting? Support Converting Colors with the new Membership Option!

The pro membership hides all ads, plus gives you double the colors in the color bucket, and more awesome pro features!

[Learn more, Memberships starting at \\$2.50/m!](#)

**Follow me
on Twitter!**

@ConvertingColor