

Converting Colors

$Yxy(39.1447, 0.3582, 0.3394)$

Have a look what the booklet for
Yxy(39.1447, 0.3582, 0.3394)
contains.

Yxy(39.0690, 0.3581, 0.3383)	3
<i>Conversions</i>	4
<i>Details</i>	6
<i>Harmonies</i>	12
<i>Previews</i>	24
<i>Color Blindness Simulation</i>	27
<i>CSS Examples</i>	30

Color

Yxy(39.0690, 0.3581, 0.3383)

Conversions

Conversions Part 1

Format	Color
Hex	C69F98
RGB	198, 159, 152
RGB Percent	78%, 62%, 60%
CMY	0.2235, 0.3765, 0.4040
CMYK	0.00, 0.20, 0.23, 0.22
HSL	9°, 29%, 69%
HSV	9°, 23%, 78%
XYZ	41.3556, 39.0690, 35.0616
YIQ	169.8630, 25.4910, 6.0910

Conversions

Conversions Part 2

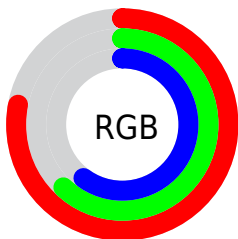
Format	Color
R_{YB}	198, 160, 152
Decimal	13016984
CIE Lab	68.80, 13.36, 9.12
CIE LCh	69, 16.177, 34.337
Yxy	39.0690, 0.3581, 0.3383
Android (android.graphics.Color)	4291207064 (0xFFC69F98)
YUV	169.8630, -8.8065, 24.6761
Hunter-Lab	62.5052, 8.7177, 10.4955

Details

The Yxy color **39.0690, 0.3581, 0.3383** is a light color, and the websafe version is hex **CC9999**. A complement of this color would be **48.0128, 0.2780, 0.3195**, and the grayscale version is **40.1627, 0.3127, 0.3290**.

A 20% lighter version of the original color is **73.8094, 0.3492, 0.3373**, and **17.2946, 0.3721, 0.3399** is the 20% darker color. If you saturate the color by 10%, you get **33.0893, 0.3849, 0.3426**, and if you desaturate by 10%, it is **45.9444, 0.3360, 0.3341**.

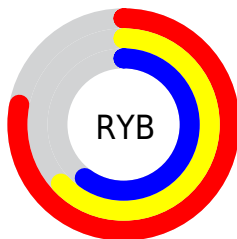
Distribution



Red (78%)

Green (62%)

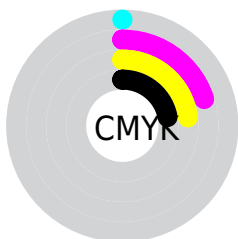
Blue (60%)



Red (78%)

Yellow (63%)

Blue (60%)

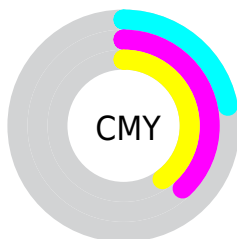


Cyan (0%)

Magenta (20%)

Yellow (23%)

Black (22%)



Cyan (22%)


Magenta (38%)


Yellow (40%)

Brightness & Saturation Gradients


These gradients show how the Yxy color 39.0690, 0.3581, 0.3383 changes by changing the brightness by 10 percent. The first figure shows a shift by +10% for each color and the second figure -10%.


Similar to the brightness gradients but the following saturation gradients show a change of the Yxy color 39.0690, 0.3581, 0.3383 by changing the saturation by 10% instead.


 39.0690, 0.3581,
0.3383


 39.0690, 0.3581,
0.3383


342.1838, 0.3346,
0.3339

 26.8134, 0.3643,
0.3393


 73.7437, 0.3493,
0.3368

 17.4331, 0.3723,
0.3405


 96.9316, 0.3461,
0.3362

 10.5438, 0.3834,
0.3420


124.5324, 0.3434,
0.3357

 5.7610, 0.3994,
0.3438

156.9305, 0.3411,
0.3352

 2.7003, 0.4246,
0.3458

194.5103, 0.3391,
0.3348

 0.9773, 0.4857,
0.3590

237.6562, 0.3374,

 0.0000, 1.0000,

0.3345

0.0000

286.7525, 0.3359,
0.3342

0.0000, 0.0000,
0.0000

39.0690, 0.3581,
0.3383

39.0690, 0.3581,
0.3383

33.0893, 0.3849,
0.3426

45.9444, 0.3360,
0.3341

27.9632, 0.4169,
0.3467

53.7446, 0.3179,
0.3302

23.6532, 0.4542,
0.3502

62.5044, 0.3030,
0.3266

20.1168, 0.4959,
0.3525

72.2547, 0.2907,
0.3233

17.3077, 0.5391,
0.3527

83.0254, 0.2806,
0.3203

■ 15.1746, 0.5792,
0.3502

■ 90.7473, 0.2794,
0.3289

■ 13.6592, 0.6107,
0.3450

■ 12.9447, 0.6261,
0.3411

Harmonies

Analogous

The Analogous color harmony consists of three colors that are next to each other on the color wheel.



39.0690, 0.3442, 0.3181



39.0690, 0.3581, 0.3383



39.0690, 0.3593, 0.3571

Triad

The Triadic color harmony groups three colors that are evenly spaced from another and form a triangle on the color wheel.



39.0690, 0.3581, 0.3383



39.0690, 0.3025, 0.3596



39.0690, 0.2782, 0.2898

Complementary

The Complementary color scheme is a pair of colors which are on the opposite of each other on the color wheel.



39.0690, 0.3581, 0.3383



48.0128, 0.2780, 0.3195

Split Complementary

Split-complementary colors differ from the complementary color scheme. The scheme consists of three colors, the original color and two neighbors of the complement color.



39.0690, 0.2681, 0.2990



39.0690, 0.3581, 0.3383



39.0690, 0.2817, 0.3394

Square

The Square scheme is like the rectangle color scheme, but the four colors are evenly spaced on the color wheel.



39.0690, 0.3581, 0.3383



39.0690, 0.3266, 0.3707



39.0690, 0.2694, 0.3169



39.0690, 0.2976, 0.2908

Rectangle

The Rectangle color scheme consists of four colors that form a rectangle on the color wheel.



39.0690, 0.3581, 0.3383



39.0690, 0.3527, 0.3663



39.0690, 0.2694, 0.3169



39.0690, 0.2737, 0.2917

Sweetspot

The Sweet Spot groups the original color and five complimentary colors.



39.0708, 0.3581, 0.3383



89.6269, 0.3244, 0.3317



38.2263, 0.3217, 0.2799



19.0009, 0.3255, 0.3319



0.0000, 0.0000, 0.0000



21.4041, 0.3127, 0.3290

Same Dimension

The Same Dimension uses a secret algorithm to generate beautiful new colors.



39.0708, 0.3581, 0.3383



63.5017, 0.3713, 0.3405



47.6903, 0.3517, 0.3673



10.8935, 0.3286, 0.3326



8.4974, 0.6243, 0.3425



0.4878, 0.5893, 0.3703

Inverse Universe

The Inverse Universe completely reimagines the original color for something new.



48.0128, 0.2780, 0.3195



82.1343, 0.2707, 0.3171



38.7929, 0.2754, 0.2875



11.7815, 0.2984, 0.3254



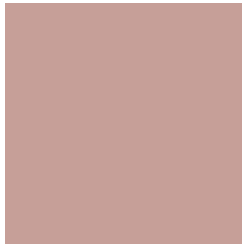
20.9234, 0.2112, 0.2803



1.0673, 0.2143, 0.2915

Previews

White Background



This preview shows how the Yxy color 39.0690, 0.3581, 0.3383 looks on a white background.

Color Contrast Check

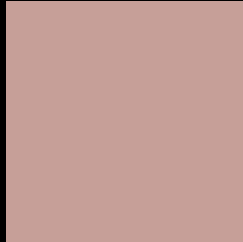
Large Text (above 18pt) WCAG AA × Fail

Any Text WCAG AA × Fail

Large Text (above 18pt) WCAG AAA × Fail

Any Text WCAG AAA × Fail

Black Background



This preview shows how the Yxy color 39.0690, 0.3581, 0.3383 looks on a black background.

Color Contrast Check

Large Text (above 18pt) WCAG AA ✓ Pass

Any Text WCAG AA ✓ Pass

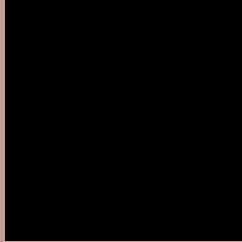
Large Text (above 18pt) WCAG AAA ✓ Pass

Any Text WCAG AAA ✓ Pass

If you want to check with other color combinations, try the [Color Contrast Checker](#).

Yxy 39.0690, 0.3581, 0.3383

Background



This preview shows how black text looks on a background with the Yxy color 39.0690, 0.3581, 0.3383.



This preview shows how white text looks on a background with the Yxy color 39.0690, 0.3581, 0.3383.

Color Blindness Simulation

Color vision deficiency is a very complex topic, and I could not describe the different causes any better than Wikipedia does, so if you want to learn more, you should check out their [article about color blindness](#).

Dichromacy



Original Color

39.0690, 0.3581, 0.3383

Protanopia

39.0364, 0.3289, 0.3444

Deuteranopia

39.0222, 0.3502, 0.3439



Tritanopia

38.9209, 0.3441, 0.3124

Trichromacy



Original Color

39.0690, 0.3581, 0.3383

Protanomaly

38.9848, 0.3391, 0.3414

Deuteranomaly

39.0616, 0.3535, 0.3424

Tritanomaly

38.9004, 0.3488, 0.3213

Monochromacy



Original Color

39.0690, 0.3581, 0.3383

Achromatopsia

40.1978, 0.3127, 0.3290

Achromatomaly

39.6201, 0.3285, 0.3331

CSS Examples

Text

The CSS property to change the color of the text to Yxy 39.0690, 0.3581, 0.3383 is called "color". The color property can be set on classes, ids or directly on the HTML element.

This example shows how text in the color `rgb(198, 159, 152)` looks like.

```
.text, #text, p{  
    color:rgb(198, 159, 152)  
}
```

If you want to add a text shadow in that color use the text-shadow property, you can generate a text shadow directly with our [CSS Text Shadow Generator](#).

Here you see how black text with a 4 pixel rgb(198, 159, 152) colored shadow looks like.

```
.shadow{ text-shadow: 4px 4px 2px rgb(198, 159, 152) }
```

Border

The CSS property to change the border of an element to Yxy 39.0690, 0.3581, 0.3383 is called "border". The border property can be set on classes, ids or directly on the HTML element.

This example shows the color as border, it can be applied via the CSS property "border" or "border-color".

```
.border, #border, table{ border:4px solid rgb(198, 159, 152) }
```

If only the border color should be changed use the property `border-color`.

```
.border{ border-color:rgb(198, 159, 152) }
```

If you want to add a box shadow in that color use:

Here you see how a box with a 4 pixel `rgb(198, 159, 152)` colored shadow looks like.

```
.boxshadow{ -moz-box-shadow:4px 4px 4px  
4px rgb(198, 159, 152); -webkit-box-  
shadow:4px 4px 4px 4px rgb(198, 159, 152);  
box-shadow:4px 4px 4px 4px rgb(198, 159,  
152) }
```


Background

The CSS property to change the background color of an element to Yxy 39.0690, 0.3581, 0.3383 is called "background". The background property can be set on classes, ids or directly on the HTML element.

```
.background, #background, body{  
background: rgb(198, 159, 152) }
```

If only the background color should be changed can be used:

```
.background{ background-color: rgb(198,  
159, 152) }
```

This example shows the color as background, it is applied via the CSS property "background".

To optimize and compress your CSS code, you can use our [online CSS compressor and optimizer](#) based on csstidy. If you want to create a linear or radial gradient as background or border, check our [CSS Gradient Generator](#).

Hey! You found this booklet interesting? Support Converting Colors with the new Membership Option!

The pro membership hides all ads, plus gives you double the colors in the color bucket, and more awesome pro features!

[Learn more, Memberships starting at \\$2.50/m!](#)

**Follow me
on Twitter!**

@ConvertingColor