

Converting Colors

$Yxy(39.3790, 0.3398, 0.3249)$

Have a look what the booklet for
Yxy(39.3790, 0.3398, 0.3249)
contains.

Yxy(39.3765, 0.3400, 0.3251)	3
Conversions	4
Details	6
Harmonies	12
Previews	24
Color Blindness Simulation	27
CSS Examples	30

Color

Yxy(39.3765, 0.3400, 0.3251)

Conversions

Conversions Part 1

Format	Color
Hex	C0A1A4
RGB	192, 161, 164
RGB Percent	75%, 63%, 64%
CMY	0.2471, 0.3686, 0.3568
CMYK	0.00, 0.16, 0.15, 0.25
HSL	354°, 20%, 69%
HSV	354°, 16%, 75%
XYZ	41.1812, 39.3765, 40.5635
YIQ	170.6110, 17.5130, 7.5050

Conversions

Conversions Part 2

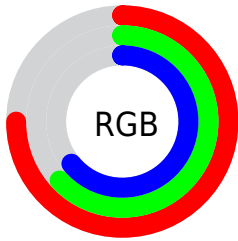
Format	Color
RYB	192, 161, 164
Decimal	12624292
CIELab	69.02, 11.87, 2.68
CIElCh	69, 12.167, 12.736
Yxy	39.3765, 0.3400, 0.3251
Android (android.graphics.Color)	4290814372 (0xFFC0A1A4)
YUV	170.6110, -3.2592, 18.7582
Hunter-Lab	62.7507, 7.3299, 5.5991

Details

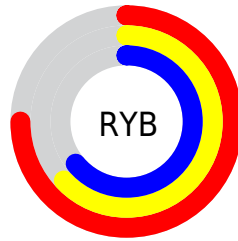
The Yxy color **39.3765, 0.3400, 0.3251** is a light color, and the websafe version is hex **CC9999**. A complement of this color would be **48.9398, 0.2907, 0.3330**, and the grayscale version is **40.5301, 0.3127, 0.3290**.

A 20% lighter version of the original color is **74.3659, 0.3350, 0.3260**, and **17.5104, 0.3489, 0.3237** is the 20% darker color. If you saturate the color by 10%, you get **32.5910, 0.3624, 0.3225**, and if you desaturate by 10%, it is **47.2810, 0.3220, 0.3276**.

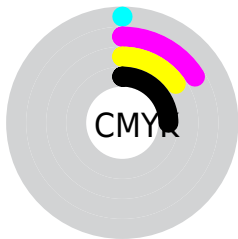
Distribution



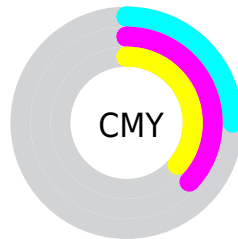
- Red (75%)
- Green (63%)
- Blue (64%)



- Red (75%)
- Yellow (63%)
- Blue (64%)



- Cyan (0%)
- Magenta (16%)
- Yellow (15%)
- Black (25%)




- Cyan (25%)
- Magenta (37%)
- Yellow (36%)

Brightness & Saturation Gradients

These gradients show how the Yxy color 39.3765, 0.3400, 0.3251 changes by changing the brightness by 10 percent. The first figure shows a shift by +10% for each color and the second figure -10%.


Similar to the brightness gradients but the following saturation gradients show a change of the Yxy color 39.3765, 0.3400, 0.3251 by changing the saturation by 10% instead.


 39.3765, 0.3400,
0.3251


 39.3765, 0.3400,
0.3251


343.4886, 0.3259,
0.3272

 27.0527, 0.3437,
0.3245


 74.2131, 0.3348,
0.3259

 17.6128, 0.3485,
0.3237


 97.4948, 0.3328,
0.3262

 10.6724, 0.3550,
0.3226


125.1979, 0.3312,
0.3264

 5.8470, 0.3645,
0.3210

157.7068, 0.3298,
0.3266

 2.7523, 0.3795,
0.3182

195.4059, 0.3287,
0.3268

 1.0038, 0.4067,
0.3128

238.6797, 0.3276,

 0.0000, 1.0000,

0.3270

0.0000

287.9124, 0.3267,
0.3271

0.0000, 0.0000,
0.0000

39.3765, 0.3400,
0.3251

39.3765, 0.3400,
0.3251

32.5910, 0.3624,
0.3225

47.2810, 0.3220,
0.3276

26.8690, 0.3900,
0.3199

56.3463, 0.3075,
0.3299

22.1580, 0.4236,
0.3176

66.6186, 0.2958,
0.3320

18.3993, 0.4630,
0.3158

78.1398, 0.2863,
0.3339

15.5279, 0.5069,
0.3151

89.6676, 0.2784,
0.3335

■ 13.4706, 0.5517,
0.3160

■ 89.9434, 0.2762,
0.3289

■ 12.1427, 0.5917,
0.3187

■ 11.4366, 0.6209,
0.3229

■ 11.2494, 0.6293,
0.3240

Harmonies

Analogous

The Analogous color harmony consists of three colors that are next to each other on the color wheel.



39.3765, 0.3247, 0.3110



39.3765, 0.3400, 0.3251



39.3765, 0.3479, 0.3405

Triad

The Triadic color harmony groups three colors that are evenly spaced from another and form a triangle on the color wheel.



39.3765, 0.3400, 0.3251



39.3765, 0.3182, 0.3585



39.3765, 0.2803, 0.3038

Complementary

The Complementary color scheme is a pair of colors which are on the opposite of each other on the color wheel.



39.3765, 0.3400, 0.3251



48.9398, 0.2907, 0.3330

Split Complementary

Split-complementary colors differ from the complementary color scheme. The scheme consists of three colors, the original color and two neighbors of the complement color.



39.3765, 0.2788, 0.3159



39.3765, 0.3400, 0.3251



39.3765, 0.3003, 0.3480

Square

The Square scheme is like the rectangle color scheme, but the four colors are evenly spaced on the color wheel.



39.3765, 0.3400, 0.3251



39.3765, 0.3351, 0.3604



39.3765, 0.2860, 0.3321



39.3765, 0.2903, 0.2988

Rectangle

The Rectangle color scheme consists of four colors that form a rectangle on the color wheel.



39.3765, 0.3400, 0.3251



39.3765, 0.3478, 0.3497



39.3765, 0.2860, 0.3321



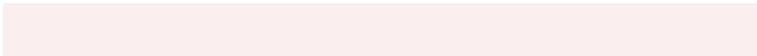
39.3765, 0.2788, 0.3071

Sweetspot

The Sweet Spot groups the original color and five complimentary colors.



39.3783, 0.3400, 0.3251



87.3183, 0.3203, 0.3278



40.1018, 0.3117, 0.2893



18.4970, 0.3214, 0.3277



97.7402, 0.3127, 0.3290



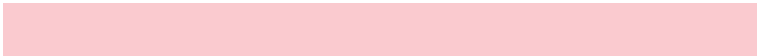
20.4902, 0.3127, 0.3290

Same Dimension

The Same Dimension uses a secret algorithm to generate beautiful new colors.



39.3783, 0.3400, 0.3251



67.2505, 0.3466, 0.3243



43.8168, 0.3403, 0.3453



10.0935, 0.3274, 0.3268



7.5771, 0.6274, 0.3230



0.3329, 0.5878, 0.3012

Inverse Universe

The Inverse Universe completely reimagines the original color for something new.



39.3783, 0.3400, 0.3251



67.2505, 0.3466, 0.3243



43.8604, 0.2879, 0.3122



10.0935, 0.3274, 0.3268



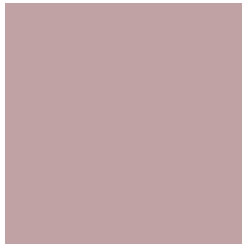
7.5771, 0.6274, 0.3230



0.3329, 0.5878, 0.3012

Previews

White Background



This preview shows how the Yxy color 39.3765, 0.3400, 0.3251 looks on a white background.

Color Contrast Check

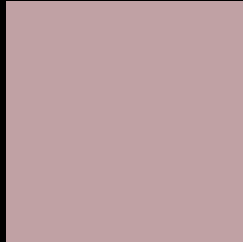
Large Text (above 18pt) WCAG AA × Fail

Any Text WCAG AA × Fail

Large Text (above 18pt) WCAG AAA × Fail

Any Text WCAG AAA × Fail

Black Background



This preview shows how the Yxy color 39.3765, 0.3400, 0.3251 looks on a black background.

Color Contrast Check

Large Text (above 18pt) WCAG AA ✓ Pass

Any Text WCAG AA ✓ Pass

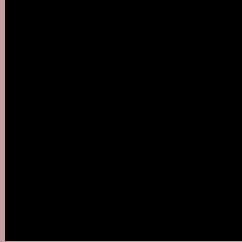
Large Text (above 18pt) WCAG AAA ✓ Pass

Any Text WCAG AAA ✓ Pass

If you want to check with other color combinations, try the [Color Contrast Checker](#).

Yxy 39.3765, 0.3400, 0.3251

Background



This preview shows how black text looks on a background with the Yxy color 39.3765, 0.3400, 0.3251.



This preview shows how white text looks on a background with the Yxy color 39.3765, 0.3400, 0.3251.

Color Blindness Simulation

Color vision deficiency is a very complex topic, and I could not describe the different causes any better than Wikipedia does, so if you want to learn more, you should check out their [article about color blindness](#).

Dichromacy



Original Color

39.3765, 0.3400, 0.3251

Protanopia

39.6031, 0.3164, 0.3290

Deuteranopia

39.4395, 0.3348, 0.3277



Tritanopia

39.4576, 0.3337, 0.3134

Trichromacy



Original Color

39.3765, 0.3400, 0.3251

Protanomaly

39.2840, 0.3241, 0.3263

Deuteranomaly

39.3398, 0.3369, 0.3264

Tritanomaly

39.3436, 0.3365, 0.3173

Monochromacy



Original Color

39.3765, 0.3400, 0.3251

Achromatopsia

40.7240, 0.3127, 0.3290

Achromatomaly

40.0483, 0.3230, 0.3277

CSS Examples

Text

The CSS property to change the color of the text to Yxy 39.3765, 0.3400, 0.3251 is called "color". The color property can be set on classes, ids or directly on the HTML element.

This example shows how text in the color `rgb(192, 161, 164)` looks like.

```
.text, #text, p{  
    color:rgb(192, 161, 164)  
}
```

If you want to add a text shadow in that color use the text-shadow property, you can generate a text shadow directly with our [CSS Text Shadow Generator](#).

Here you see how black text with a 4 pixel rgb(192, 161, 164) colored shadow looks like.

```
.shadow{ text-shadow: 4px 4px 2px rgb(192, 161, 164) }
```

Border

The CSS property to change the border of an element to Yxy 39.3765, 0.3400, 0.3251 is called "border". The border property can be set on classes, ids or directly on the HTML element.

This example shows the color as border, it can be applied via the CSS property "border" or "border-color".

```
.border, #border, table{ border:4px solid rgb(192, 161, 164) }
```

If only the border color should be changed use the property border-color.

```
.border{ border-color:rgb(192, 161, 164) }
```

If you want to add a box shadow in that color use:

Here you see how a box with a 4 pixel rgb(192, 161, 164) colored shadow looks like.

```
.boxshadow{ -moz-box-shadow:4px 4px 4px  
4px rgb(192, 161, 164); -webkit-box-  
shadow:4px 4px 4px 4px rgb(192, 161, 164);  
box-shadow:4px 4px 4px 4px rgb(192, 161,  
164) }
```


Background

The CSS property to change the background color of an element to Yxy 39.3765, 0.3400, 0.3251 is called "background". The background property can be set on classes, ids or directly on the HTML element.

```
.background, #background, body{  
background: rgb(192, 161, 164) }
```

If only the background color should be changed can be used:

```
.background{ background-color: rgb(192,  
161, 164) }
```

This example shows the color as background, it is applied via the CSS property "background".

To optimize and compress your CSS code, you can use our [online CSS compressor and optimizer](#) based on csstidy. If you want to create a linear or radial gradient as background or border, check our [CSS Gradient Generator](#).

Hey! You found this booklet interesting? Support Converting Colors with the new Membership Option!

The pro membership hides all ads, plus gives you double the colors in the color bucket, and more awesome pro features!

[Learn more, Memberships starting at \\$2.50/m!](#)

**Follow me
on Twitter!**

@ConvertingColor