

Converting Colors

Yxy(39.5668, 0.3791, 0.3446)

Have a look what the booklet for
Yxy(39.5668, 0.3791, 0.3446)
contains.

Yxy(39.4922, 0.3792, 0.3443)	3
Conversions	4
Details	6
Harmonies	12
Previews	24
Color Blindness Simulation	27
CSS Examples	30

Color

Yxy(39.4922, 0.3792, 0.3443)

Conversions

Conversions Part 1

Format	Color
Hex	D29C90
RGB	210, 156, 144
RGB Percent	82%, 61%, 56%
CMY	0.1766, 0.3882, 0.4353
CMYK	0.00, 0.26, 0.31, 0.18
HSL	11°, 42%, 69%
HSV	11°, 31%, 82%
XYZ	43.4953, 39.4922, 31.7153
YIQ	170.7780, 36.0360, 7.7160

Conversions

Conversions Part 2

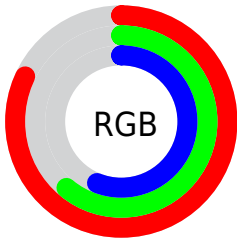
Format	Color
RYB	210, 159, 144
Decimal	13802640
CIELab	69.11, 18.47, 14.16
CIELCh	69, 23.270, 37.476
Yxy	39.4922, 0.3792, 0.3443
Android (android.graphics.Color)	4291992720 (0xFFD29C90)
YUV	170.7780, -13.2016, 34.3977
Hunter-Lab	62.8428, 13.5701, 14.0677

Details

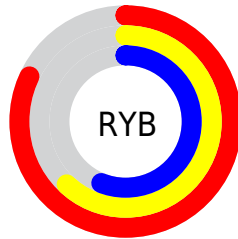
The Yxy color **39.4922, 0.3792, 0.3443** is a light color, and the websafe version is hex **CC9999**. A complement of this color would be **50.9499, 0.2661, 0.3130**, and the grayscale version is **40.6618, 0.3127, 0.3290**.

A 20% lighter version of the original color is **71.9257, 0.3558, 0.3425**, and **17.5788, 0.3996, 0.3461** is the 20% darker color. If you saturate the color by 10%, you get **33.5481, 0.4098, 0.3493**, and if you desaturate by 10%, it is **46.3743, 0.3536, 0.3392**.

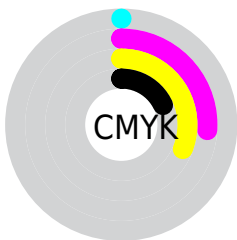
Distribution



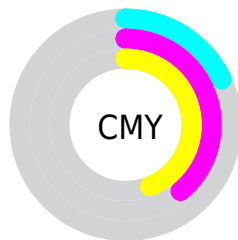
- Red (82%)
- Green (61%)
- Blue (56%)



- Red (82%)
- Yellow (62%)
- Blue (56%)



- Cyan (0%)
- Magenta (26%)
- Yellow (31%)
- Black (18%)




- Cyan (18%)
- Magenta (39%)
- Yellow (44%)

Brightness & Saturation Gradients

These gradients show how the Yxy color 39.4922, 0.3792, 0.3443 changes by changing the brightness by 10 percent. The first figure shows a shift by +10% for each color and the second figure -10%.


Similar to the brightness gradients but the following saturation gradients show a change of the Yxy color 39.4922, 0.3792, 0.3443 by changing the saturation by 10% instead.


 39.4922, 0.3792,
0.3443


 39.4922, 0.3792,
0.3443


343.9786, 0.3447,
0.3373

 27.1428, 0.3882,
0.3458


 74.3896, 0.3664,
0.3419

 17.6805, 0.3999,
0.3475


 97.7065, 0.3617,
0.3410

 10.7209, 0.4159,
0.3495


125.4480, 0.3577,
0.3402

 5.8795, 0.4388,
0.3517

157.9985, 0.3543,
0.3395

 2.7719, 0.4741,
0.3531

195.7424, 0.3514,
0.3388

 1.0139, 0.5795,
0.3801

239.0641, 0.3489,

 0.0000, 1.0000,

0.3383

0.0000

288.3481, 0.3467,
0.3378

0.0000, 0.0000,
0.0000

39.4922, 0.3792,
0.3443

39.4922, 0.3792,
0.3443

33.5481, 0.4098,
0.3493

46.3743, 0.3536,
0.3392

28.4957, 0.4455,
0.3537

54.2270, 0.3324,
0.3343

24.2933, 0.4855,
0.3568

63.0880, 0.3149,
0.3296

20.8934, 0.5278,
0.3578

72.9916, 0.3005,
0.3254

18.2439, 0.5681,
0.3557

83.9702, 0.2886,
0.3215

■ 16.2859, 0.6014,
0.3504

■ 92.4379, 0.2860,
0.3289

■ 15.0999, 0.6220,
0.3444

Harmonies

Analogous

The Analogous color harmony consists of three colors that are next to each other on the color wheel.



39.4922, 0.3607, 0.3160



39.4922, 0.3792, 0.3443



39.4922, 0.3785, 0.3706

Triad

The Triadic color harmony groups three colors that are evenly spaced from another and form a triangle on the color wheel.



39.4922, 0.3792, 0.3443



39.4922, 0.2942, 0.3710



39.4922, 0.2661, 0.2731

Complementary

The Complementary color scheme is a pair of colors which are on the opposite of each other on the color wheel.



39.4922, 0.3792, 0.3443



50.9499, 0.2661, 0.3130

Split Complementary

Split-complementary colors differ from the complementary color scheme. The scheme consists of three colors, the original color and two neighbors of the complement color.



39.4922, 0.2505, 0.2838



39.4922, 0.3792, 0.3443



39.4922, 0.2661, 0.3402

Square

The Square scheme is like the rectangle color scheme, but the four colors are evenly spaced on the color wheel.



39.4922, 0.3792, 0.3443



39.4922, 0.3284, 0.3888



39.4922, 0.2505, 0.3077



39.4922, 0.2943, 0.2763

Rectangle

The Rectangle color scheme consists of four colors that form a rectangle on the color wheel.



39.4922, 0.3792, 0.3443



39.4922, 0.3676, 0.3835



39.4922, 0.2505, 0.3077



39.4922, 0.2593, 0.2751

Sweetspot

The Sweet Spot groups the original color and five complimentary colors.



39.4941, 0.3792, 0.3443



87.2126, 0.3280, 0.3332



37.7669, 0.3266, 0.2633



18.2511, 0.3308, 0.3339



0.0000, 0.0000, 0.0000



21.4041, 0.3127, 0.3290

Same Dimension

The Same Dimension uses a secret algorithm to generate beautiful new colors.



39.4941, 0.3792, 0.3443



54.6847, 0.4001, 0.3478



51.6706, 0.3673, 0.3827



12.1516, 0.3286, 0.3333



9.3198, 0.6198, 0.3460



0.6286, 0.5858, 0.3731

Inverse Universe

The Inverse Universe completely reimagines the original color for something new.



50.9499, 0.2661, 0.3130



75.2706, 0.2567, 0.3089



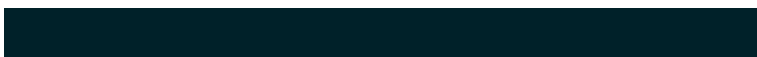
37.8505, 0.2609, 0.2686



13.0256, 0.2983, 0.3247



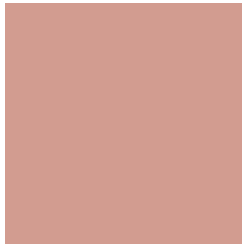
20.9137, 0.2084, 0.2701



1.2670, 0.2117, 0.2821

Previews

White Background



This preview shows how the Yxy color 39.4922, 0.3792, 0.3443 looks on a white background.

Color Contrast Check

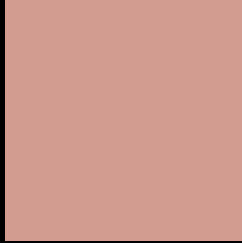
Large Text (above 18pt) WCAG AA × Fail

Any Text WCAG AA × Fail

Large Text (above 18pt) WCAG AAA × Fail

Any Text WCAG AAA × Fail

Black Background



This preview shows how the Yxy color 39.4922, 0.3792, 0.3443 looks on a black background.

Color Contrast Check

Large Text (above 18pt) WCAG AA ✓ Pass

Any Text WCAG AA ✓ Pass

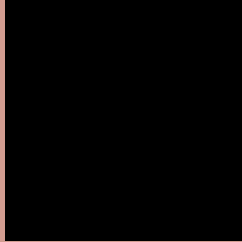
Large Text (above 18pt) WCAG AAA ✓ Pass

Any Text WCAG AAA ✓ Pass

If you want to check with other color combinations, try the [Color Contrast Checker](#).

Yxy 39.4922, 0.3792, 0.3443

Background



This preview shows how black text looks on a background with the Yxy color 39.4922, 0.3792, 0.3443.



This preview shows how white text looks on a background with the Yxy color 39.4922, 0.3792, 0.3443.

Color Blindness Simulation

Color vision deficiency is a very complex topic, and I could not describe the different causes any better than Wikipedia does, so if you want to learn more, you should check out their [article about color blindness](#).

Dichromacy



Original Color

39.4922, 0.3792, 0.3443

Protanopia

39.4374, 0.3360, 0.3542

Deuteranopia

39.7797, 0.3626, 0.3556



Tritanopia

39.4961, 0.3608, 0.3143

Trichromacy



Original Color

39.4922, 0.3792, 0.3443

Protanomaly

39.3804, 0.3505, 0.3507

Deuteranomaly

39.4041, 0.3686, 0.3513

Tritanomaly

39.3944, 0.3676, 0.3254

Monochromacy



Original Color

39.4922, 0.3792, 0.3443

Achromatopsia

40.7240, 0.3127, 0.3290

Achromatomaly

40.1599, 0.3351, 0.3358

CSS Examples

Text

The CSS property to change the color of the text to Yxy 39.4922, 0.3792, 0.3443 is called "color". The color property can be set on classes, ids or directly on the HTML element.

This example shows how text in the color `rgb(210, 156, 144)` looks like.

```
.text, #text, p{  
    color:rgb(210, 156, 144)  
}
```

If you want to add a text shadow in that color use the text-shadow property, you can generate a text shadow directly with our [CSS Text Shadow Generator](#).

Here you see how black text with a 4 pixel rgb(210, 156, 144) colored shadow looks like.

```
.shadow{ text-shadow: 4px 4px 2px rgb(210, 156, 144) }
```

Border

The CSS property to change the border of an element to Yxy 39.4922, 0.3792, 0.3443 is called "border". The border property can be set on classes, ids or directly on the HTML element.

This example shows the color as border, it can be applied via the CSS property "border" or "border-color".

```
.border, #border, table{ border:4px solid rgb(210, 156, 144) }
```

If only the border color should be changed use the property `border-color`.

```
.border{ border-color:rgb(210, 156, 144) }
```

If you want to add a box shadow in that color use:

Here you see how a box with a 4 pixel `rgb(210, 156, 144)` colored shadow looks like.

```
.boxshadow{ -moz-box-shadow:4px 4px 4px  
4px rgb(210, 156, 144); -webkit-box-  
shadow:4px 4px 4px 4px rgb(210, 156, 144);  
box-shadow:4px 4px 4px 4px rgb(210, 156,  
144) }
```


Background

The CSS property to change the background color of an element to Yxy 39.4922, 0.3792, 0.3443 is called "background". The background property can be set on classes, ids or directly on the HTML element.

```
.background, #background, body{  
background: rgb(210, 156, 144) }
```

If only the background color should be changed can be used:

```
.background{ background-color: rgb(210,  
156, 144) }
```

This example shows the color as background, it is applied via the CSS property "background".

To optimize and compress your CSS code, you can use our [online CSS compressor and optimizer](#) based on csstidy. If you want to create a linear or radial gradient as background or border, check our [CSS Gradient Generator](#).

Hey! You found this booklet interesting? Support Converting Colors with the new Membership Option!

The pro membership hides all ads, plus gives you double the colors in the color bucket, and more awesome pro features!

[Learn more, Memberships starting at \\$2.50/m!](#)

**Follow me
on Twitter!**

@ConvertingColor