

Converting Colors

$Yxy(39.5942, 0.3471, 0.3402)$

Have a look what the booklet for
Yxy(39.5942, 0.3471, 0.3402)
contains.

Yxy(39.6373, 0.3471, 0.3398)	3
<i>Conversions</i>	4
<i>Details</i>	6
<i>Harmonies</i>	12
<i>Previews</i>	24
<i>Color Blindness Simulation</i>	27
<i>CSS Examples</i>	30

Color

Yxy(39.6373, 0.3471, 0.3398)

Conversions

Conversions Part 1

Format	Color
Hex	BFA39B
RGB	191, 163, 155
RGB Percent	75%, 64%, 61%
CMY	0.2512, 0.3607, 0.3922
CMYK	0.00, 0.15, 0.19, 0.25
HSL	13°, 22%, 68%
HSV	13°, 19%, 75%
XYZ	40.4888, 39.6373, 36.5228
YIQ	170.4600, 19.2560, 3.4480

Conversions

Conversions Part 2

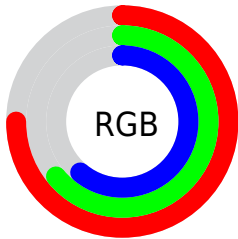
Format	Color
RYB	191, 165, 155
Decimal	12559259
CIELab	69.21, 8.93, 7.95
CIELCh	69, 11.956, 41.690
Yxy	39.6373, 0.3471, 0.3398
Android (android.graphics.Color)	4290749339 (0xFFBFA39B)
YUV	170.4600, -7.6218, 18.0136
Hunter-Lab	62.9582, 4.6178, 9.6759

Details

The Yxy color **39.6373, 0.3471, 0.3398** is a light color, and the websafe version is hex **CC9999**. A complement of this color would be **44.5583, 0.2842, 0.3179**, and the grayscale version is **40.4699, 0.3127, 0.3290**.

A 20% lighter version of the original color is **74.7027, 0.3410, 0.3384**, and **17.6867, 0.3577, 0.3420** is the 20% darker color. If you saturate the color by 10%, you get **34.0857, 0.3708, 0.3460**, and if you desaturate by 10%, it is **45.9114, 0.3274, 0.3339**.

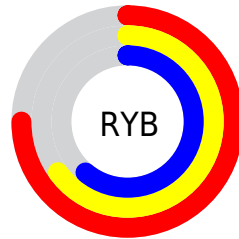
Distribution



Red (75%)

Green (64%)

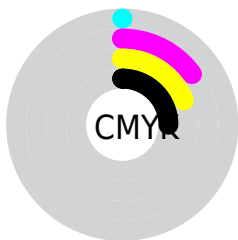
Blue (61%)



Red (75%)

Yellow (65%)

Blue (61%)

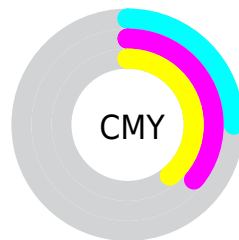


Cyan (0%)

Magenta (15%)

Yellow (19%)

Black (25%)



Cyan (25%)

Magenta (36%)


Yellow (39%)

Brightness & Saturation Gradients


These gradients show how the Yxy color 39.6373, 0.3471, 0.3398 changes by changing the brightness by 10 percent. The first figure shows a shift by +10% for each color and the second figure -10%.


Similar to the brightness gradients but the following saturation gradients show a change of the Yxy color 39.6373, 0.3471, 0.3398 by changing the saturation by 10% instead.

 39.6373, 0.3471,
0.3398


 39.6373, 0.3471,
0.3398


344.5925, 0.3293,
0.3345

 27.2559, 0.3517,
0.3411


 74.6109, 0.3405,
0.3379

 17.7655, 0.3578,
0.3427


 97.9718, 0.3381,
0.3372

 10.7817, 0.3661,
0.3449


125.7614, 0.3360,
0.3366

 5.9203, 0.3781,
0.3478

158.3640, 0.3343,
0.3360

 2.7967, 0.3969,
0.3518

196.1640, 0.3328,
0.3356

 1.0265, 0.4389,
0.3644

239.5458, 0.3315,

 0.0000, 1.0000,

0.3352

0.0000

288.8938, 0.3303,
0.3348

0.0000, 0.0000,
0.0000

39.6373, 0.3471,
0.3398

39.6373, 0.3471,
0.3398

34.0857, 0.3708,
0.3460

45.9114, 0.3274,
0.3339

29.2253, 0.3989,
0.3521

52.9272, 0.3109,
0.3284

25.0303, 0.4318,
0.3578

60.7102, 0.2973,
0.3233

21.4711, 0.4689,
0.3623

69.2825, 0.2859,
0.3187

18.5160, 0.5089,
0.3647

78.6659, 0.2764,
0.3145

■ 16.1305, 0.5486,
0.3639

■ 87.9073, 0.2754,
0.3257

■ 14.2762, 0.5837,
0.3594

■ 89.8095, 0.2757,
0.3289

■ 12.9056, 0.6107,
0.3518

■ 12.7729, 0.6135,
0.3510

Harmonies

Analogous

The Analogous color harmony consists of three colors that are next to each other on the color wheel.



39.6373, 0.3390, 0.3247



39.6373, 0.3471, 0.3398



39.6373, 0.3456, 0.3527

Triad

The Triadic color harmony groups three colors that are evenly spaced from another and form a triangle on the color wheel.



39.6373, 0.3471, 0.3398



39.6373, 0.3011, 0.3481



39.6373, 0.2903, 0.2994

Complementary

The Complementary color scheme is a pair of colors which are on the opposite of each other on the color wheel.



39.6373, 0.3471, 0.3398



44.5583, 0.2842, 0.3179

Split Complementary

Split-complementary colors differ from the complementary color scheme. The scheme consists of three colors, the original color and two neighbors of the complement color.



39.6373, 0.2807, 0.3046



39.6373, 0.3471, 0.3398



39.6373, 0.2869, 0.3327

Square

The Square scheme is like the rectangle color scheme, but the four colors are evenly spaced on the color wheel.



39.6373, 0.3471, 0.3398



39.6373, 0.3188, 0.3581



39.6373, 0.2795, 0.3166



39.6373, 0.3059, 0.3018

Rectangle

The Rectangle color scheme consists of four colors that form a rectangle on the color wheel.



39.6373, 0.3471, 0.3398



39.6373, 0.3395, 0.3582



39.6373, 0.2795, 0.3166



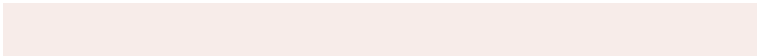
39.6373, 0.2863, 0.3003

Sweetspot

The Sweet Spot groups the original color and five complimentary colors.



39.6391, 0.3471, 0.3398



85.5832, 0.3226, 0.3323



37.9348, 0.3219, 0.2925



18.6160, 0.3237, 0.3327



97.7402, 0.3127, 0.3290



20.4902, 0.3127, 0.3290

Same Dimension

The Same Dimension uses a secret algorithm to generate beautiful new colors.



39.6391, 0.3471, 0.3398



66.3682, 0.3573, 0.3426



46.3859, 0.3430, 0.3627



9.8729, 0.3283, 0.3342



8.5005, 0.6113, 0.3528



0.4336, 0.5644, 0.3901

Inverse Universe

The Inverse Universe completely reimagines the original color for something new.



44.5583, 0.2842, 0.3179



76.9535, 0.2775, 0.3150



37.7018, 0.2828, 0.2929



10.4380, 0.2985, 0.3238



16.5823, 0.2045, 0.2562



0.7404, 0.2099, 0.2756

Previews

White Background



This preview shows how the Yxy color 39.6373, 0.3471, 0.3398 looks on a white background.

Color Contrast Check

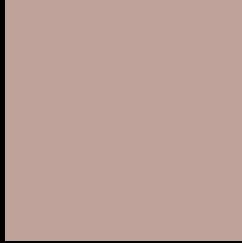
Large Text (above 18pt) WCAG AA × Fail

Any Text WCAG AA × Fail

Large Text (above 18pt) WCAG AAA × Fail

Any Text WCAG AAA × Fail

Black Background



This preview shows how the Yxy color 39.6373, 0.3471, 0.3398 looks on a black background.

Color Contrast Check

Large Text (above 18pt) WCAG AA ✓ Pass

Any Text WCAG AA ✓ Pass

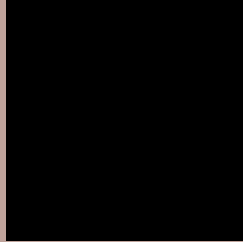
Large Text (above 18pt) WCAG AAA ✓ Pass

Any Text WCAG AAA ✓ Pass

If you want to check with other color combinations, try the [Color Contrast Checker](#).

Yxy 39.6373, 0.3471, 0.3398

Background



This preview shows how black text looks on a background with the Yxy color 39.6373, 0.3471, 0.3398.



This preview shows how white text looks on a background with the Yxy color 39.6373, 0.3471, 0.3398.

Color Blindness Simulation

Color vision deficiency is a very complex topic, and I could not describe the different causes any better than Wikipedia does, so if you want to learn more, you should check out their [article about color blindness](#).

Dichromacy



Original Color

39.6373, 0.3471, 0.3398

Protanopia

39.5878, 0.3279, 0.3429

Deuteranopia

39.6373, 0.3471, 0.3398



Tritanopia

39.4962, 0.3327, 0.3121

Trichromacy



Original Color

39.6373, 0.3471, 0.3398

Protanomaly

39.5305, 0.3349, 0.3414

Deuteranomaly

39.6373, 0.3471, 0.3398

Tritanomaly

39.4494, 0.3382, 0.3225

Monochromacy



Original Color

39.6373, 0.3471, 0.3398

Achromatopsia

40.1978, 0.3127, 0.3290

Achromatomaly

39.8190, 0.3247, 0.3318

CSS Examples

Text

The CSS property to change the color of the text to Yxy 39.6373, 0.3471, 0.3398 is called "color". The color property can be set on classes, ids or directly on the HTML element.

This example shows how text in the color `rgb(191, 163, 155)` looks like.

```
.text, #text, p{  
    color:rgb(191, 163, 155)  
}
```

If you want to add a text shadow in that color use the text-shadow property, you can generate a text shadow directly with our [CSS Text Shadow Generator](#).

Here you see how black text with a 4 pixel rgb(191, 163, 155) colored shadow looks like.

```
.shadow{ text-shadow: 4px 4px 2px rgb(191, 163, 155) }
```

Border

The CSS property to change the border of an element to Yxy 39.6373, 0.3471, 0.3398 is called "border". The border property can be set on classes, ids or directly on the HTML element.

This example shows the color as border, it can be applied via the CSS property "border" or "border-color".

```
.border, #border, table{ border:4px solid rgb(191, 163, 155) }
```

If only the border color should be changed use the property `border-color`.

```
.border{ border-color:rgb(191, 163, 155) }
```

If you want to add a box shadow in that color use:

Here you see how a box with a 4 pixel `rgb(191, 163, 155)` colored shadow looks like.

```
.boxshadow{ -moz-box-shadow:4px 4px 4px  
4px rgb(191, 163, 155); -webkit-box-  
shadow:4px 4px 4px 4px rgb(191, 163, 155);  
box-shadow:4px 4px 4px 4px rgb(191, 163,  
155) }
```


Background

The CSS property to change the background color of an element to Yxy 39.6373, 0.3471, 0.3398 is called "background". The background property can be set on classes, ids or directly on the HTML element.

```
.background, #background, body{  
background: rgb(191, 163, 155) }
```

If only the background color should be changed can be used:

```
.background{ background-color: rgb(191,  
163, 155) }
```

This example shows the color as background, it is applied via the CSS property "background".

To optimize and compress your CSS code, you can use our [online CSS compressor and optimizer](#) based on csstidy. If you want to create a linear or radial gradient as background or border, check our [CSS Gradient Generator](#).

Hey! You found this booklet interesting? Support Converting Colors with the new Membership Option!

The pro membership hides all ads, plus gives you double the colors in the color bucket, and more awesome pro features!

[Learn more, Memberships starting at \\$2.50/m!](#)

**Follow me
on Twitter!**

@ConvertingColor