

Converting Colors

$Yxy(39.8053, 0.3502, 0.3302)$

Have a look what the booklet for
Yxy(39.8053, 0.3502, 0.3302)
contains.

Yxy(39.6854, 0.3500, 0.3291)	3
Conversions	4
Details	6
Harmonies	12
Previews	24
Color Blindness Simulation	27
CSS Examples	30

Color

Yxy(39.6854, 0.3500, 0.3291)

Conversions

Conversions Part 1

Format	Color
Hex	C6A0A0
RGB	198, 160, 160
RGB Percent	78%, 63%, 63%
CMY	0.2235, 0.3725, 0.3725
CMYK	0.00, 0.19, 0.19, 0.22
HSL	360°, 25%, 70%
HSV	360°, 19%, 78%
XYZ	42.2057, 39.6854, 38.6966
YIQ	171.3620, 22.6480, 8.0560

Conversions

Conversions Part 2

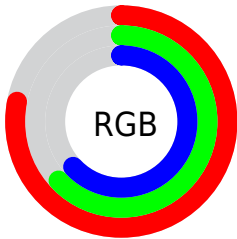
Format	Color
RYB	198, 160, 160
Decimal	13017248
CIELab	69.24, 14.02, 5.31
CIELCh	69, 14.995, 20.729
Yxy	39.6854, 0.3500, 0.3291
Android (android.graphics.Color)	4291207328 (0xFFC6A0A0)
YUV	171.3620, -5.6015, 23.3615
Hunter-Lab	62.9963, 9.3461, 7.6776

Details

The Yxy color **39.6854, 0.3500, 0.3291** is a light color, and the websafe version is hex **CC9999**. A complement of this color would be **51.9407, 0.2842, 0.3289**, and the grayscale version is **40.9376, 0.3127, 0.3290**.

A 20% lighter version of the original color is **74.7672, 0.3425, 0.3291**, and **17.7585, 0.3618, 0.3274** is the 20% darker color. If you saturate the color by 10%, you get **32.7213, 0.3767, 0.3292**, and if you desaturate by 10%, it is **47.8567, 0.3286, 0.3290**.

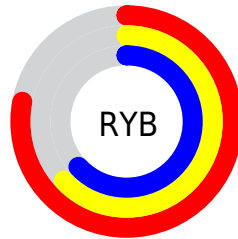
Distribution



Red (78%)

Green (63%)

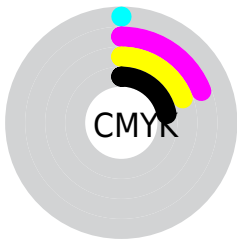
Blue (63%)



Red (78%)

Yellow (63%)

Blue (63%)

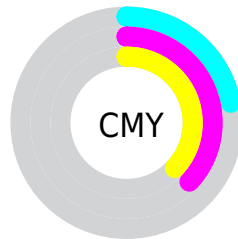


Cyan (0%)

Magenta (19%)

Yellow (19%)

Black (22%)



Cyan (22%)


Magenta (37%)

Yellow (37%)

Brightness & Saturation Gradients


These gradients show how the Yxy color 39.6854, 0.3500, 0.3291 changes by changing the brightness by 10 percent. The first figure shows a shift by +10% for each color and the second figure -10%.

Similar to the brightness gradients but the following saturation gradients show a change of the Yxy color 39.6854, 0.3500, 0.3291 by changing the saturation by 10% instead.


 39.6854, 0.3500,
0.3291


 39.6854, 0.3500,
0.3291


344.7958, 0.3307,
0.3293

 27.2933, 0.3550,
0.3290


 74.6842, 0.3428,
0.3292

 17.7937, 0.3616,
0.3288


 98.0598, 0.3402,
0.3293

 10.8019, 0.3706,
0.3284


125.8653, 0.3380,
0.3293

 5.9338, 0.3836,
0.3277

158.4851, 0.3361,
0.3293

 2.8049, 0.4040,
0.3261

196.3037, 0.3345,
0.3293

 1.0307, 0.4427,
0.3238

239.7054, 0.3331,

 0.0000, 1.0000,

0.3293

0.0000

289.0746, 0.3318,
0.3293

0.0000, 0.0000,
0.0000

39.6854, 0.3500,
0.3291

39.6854, 0.3500,
0.3291

32.7213, 0.3767,
0.3292

47.8567, 0.3286,
0.3290

26.9023, 0.4097,
0.3293

57.2830, 0.3115,
0.3290

22.1685, 0.4492,
0.3294

68.0159, 0.2978,
0.3290

18.4530, 0.4946,
0.3295

80.1026, 0.2867,
0.3289

15.6810, 0.5424,
0.3297

90.7462, 0.2794,
0.3289

■ 13.7677, 0.5867,
0.3298

■ 12.6131, 0.6200,
0.3299

■ 12.0445, 0.6387,
0.3300

■ 12.0063, 0.6401,
0.3300

Harmonies

Analogous

The Analogous color harmony consists of three colors that are next to each other on the color wheel.



39.6854, 0.3330, 0.3112



39.6854, 0.3500, 0.3291



39.6854, 0.3567, 0.3476

Triad

The Triadic color harmony groups three colors that are evenly spaced from another and form a triangle on the color wheel.



39.6854, 0.3500, 0.3291



39.6854, 0.3134, 0.3631



39.6854, 0.2754, 0.2955

Complementary

The Complementary color scheme is a pair of colors which are on the opposite of each other on the color wheel.



39.6854, 0.3500, 0.3291



51.9407, 0.2842, 0.3289

Split Complementary

Split-complementary colors differ from the complementary color scheme. The scheme consists of three colors, the original color and two neighbors of the complement color.



39.6854, 0.2707, 0.3080



39.6854, 0.3500, 0.3291



39.6854, 0.2921, 0.3477

Square

The Square scheme is like the rectangle color scheme, but the four colors are evenly spaced on the color wheel.



39.6854, 0.3500, 0.3291



39.6854, 0.3350, 0.3682



39.6854, 0.2767, 0.3271



39.6854, 0.2898, 0.2921

Rectangle

The Rectangle color scheme consists of four colors that form a rectangle on the color wheel.



39.6854, 0.3500, 0.3291



39.6854, 0.3542, 0.3580



39.6854, 0.2767, 0.3271



39.6854, 0.2726, 0.2988

Sweetspot

The Sweet Spot groups the original color and five complimentary colors.



39.6872, 0.3500, 0.3291



89.6773, 0.3229, 0.3290



41.1403, 0.3143, 0.2818



18.9650, 0.3241, 0.3290



0.0000, 0.0000, 0.0000



21.4041, 0.3127, 0.3290

Same Dimension

The Same Dimension uses a secret algorithm to generate beautiful new colors.



39.6872, 0.3500, 0.3291



64.8998, 0.3604, 0.3291



46.5325, 0.3457, 0.3525



10.6370, 0.3290, 0.3290



7.8077, 0.6401, 0.3300



0.3697, 0.6400, 0.3299

Inverse Universe

The Inverse Universe completely reimagines the original color for something new.



39.6872, 0.3500, 0.3291



64.8998, 0.3604, 0.3291



44.0472, 0.2828, 0.3043



10.6370, 0.3290, 0.3290



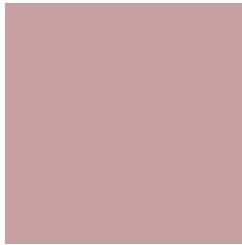
7.8077, 0.6401, 0.3300



0.3697, 0.6400, 0.3299

Previews

White Background



This preview shows how the Yxy color 39.6854, 0.3500, 0.3291 looks on a white background.

Color Contrast Check

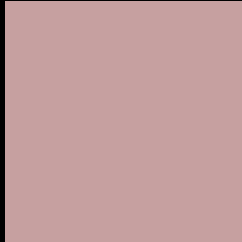
Large Text (above 18pt) WCAG AA × Fail

Any Text WCAG AA × Fail

Large Text (above 18pt) WCAG AAA × Fail

Any Text WCAG AAA × Fail

Black Background



This preview shows how the Yxy color 39.6854, 0.3500, 0.3291 looks on a black background.

Color Contrast Check

Large Text (above 18pt) WCAG AA ✓ Pass

Any Text WCAG AA ✓ Pass

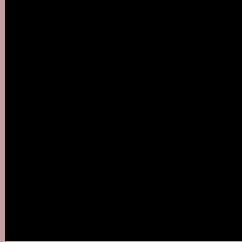
Large Text (above 18pt) WCAG AAA ✓ Pass

Any Text WCAG AAA ✓ Pass

If you want to check with other color combinations, try the [Color Contrast Checker](#).

Yxy 39.6854, 0.3500, 0.3291

Background



This preview shows how black text looks on a background with the Yxy color 39.6854, 0.3500, 0.3291.



This preview shows how white text looks on a background with the Yxy color 39.6854, 0.3500, 0.3291.

Color Blindness Simulation

Color vision deficiency is a very complex topic, and I could not describe the different causes any better than Wikipedia does, so if you want to learn more, you should check out their [article about color blindness](#).

Dichromacy



Original Color

39.6854, 0.3500, 0.3291

Protanopia

39.9768, 0.3198, 0.3346

Deuteranopia

39.5164, 0.3414, 0.3344



Tritanopia

39.5361, 0.3408, 0.3124

Trichromacy



Original Color

39.6854, 0.3500, 0.3291

Protanomaly

39.8619, 0.3304, 0.3331

Deuteranomaly

39.5503, 0.3446, 0.3331

Tritanomaly

39.7284, 0.3445, 0.3188

Monochromacy



Original Color

39.6854, 0.3500, 0.3291

Achromatopsia

40.7240, 0.3127, 0.3290

Achromatomaly

40.2512, 0.3258, 0.3290

CSS Examples

Text

The CSS property to change the color of the text to Yxy 39.6854, 0.3500, 0.3291 is called "color". The color property can be set on classes, ids or directly on the HTML element.

This example shows how text in the color `rgb(198, 160, 160)` looks like.

```
.text, #text, p{  
    color:rgb(198, 160, 160)  
}
```

If you want to add a text shadow in that color use the text-shadow property, you can generate a text shadow directly with our [CSS Text Shadow Generator](#).

Here you see how black text with a 4 pixel rgb(198, 160, 160) colored shadow looks like.

```
.shadow{ text-shadow: 4px 4px 2px rgb(198, 160, 160) }
```

Border

The CSS property to change the border of an element to Yxy 39.6854, 0.3500, 0.3291 is called "border". The border property can be set on classes, ids or directly on the HTML element.

This example shows the color as border, it can be applied via the CSS property "border" or "border-color".

```
.border, #border, table{ border:4px solid rgb(198, 160, 160) }
```

If only the border color should be changed use the property border-color.

```
.border{ border-color:rgb(198, 160, 160) }
```

If you want to add a box shadow in that color use:

Here you see how a box with a 4 pixel rgb(198, 160, 160) colored shadow looks like.

```
.boxshadow{ -moz-box-shadow:4px 4px 4px  
4px rgb(198, 160, 160); -webkit-box-  
shadow:4px 4px 4px 4px rgb(198, 160, 160);  
box-shadow:4px 4px 4px 4px rgb(198, 160,  
160) }
```


Background

The CSS property to change the background color of an element to Yxy 39.6854, 0.3500, 0.3291 is called "background". The background property can be set on classes, ids or directly on the HTML element.

```
.background, #background, body{  
background: rgb(198, 160, 160) }
```

If only the background color should be changed can be used:

```
.background{ background-color: rgb(198,  
160, 160) }
```

This example shows the color as background, it is applied via the CSS property "background".

To optimize and compress your CSS code, you can use our [online CSS compressor and optimizer](#) based on csstidy. If you want to create a linear or radial gradient as background or border, check our [CSS Gradient Generator](#).

Hey! You found this booklet interesting? Support Converting Colors with the new Membership Option!

The pro membership hides all ads, plus gives you double the colors in the color bucket, and more awesome pro features!

[Learn more, Memberships starting at \\$2.50/m!](#)

**Follow me
on Twitter!**

@ConvertingColor