

Converting Colors

Yxy(39.9581, 0.3795, 0.3494)

Have a look what the booklet for
Yxy(39.9581, 0.3795, 0.3494)
contains.

Yxy(39.9620, 0.3795, 0.3494)	3
Conversions	4
Details	6
Harmonies	12
Previews	24
Color Blindness Simulation	27
CSS Examples	30

Color

Yxy(39.9620, 0.3795, 0.3494)

Conversions

Conversions Part 1

Format	Color
Hex	D19E8E
RGB	209, 158, 142
RGB Percent	82%, 62%, 56%
CMY	0.1803, 0.3804, 0.4432
CMYK	0.00, 0.24, 0.32, 0.18
HSL	14°, 42%, 69%
HSV	14°, 32%, 82%
XYZ	43.4046, 39.9620, 31.0066
YIQ	171.4250, 35.5320, 5.8360

Conversions

Conversions Part 2

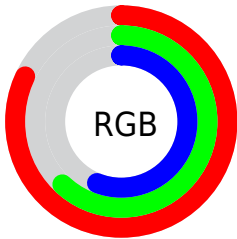
Format	Color
R _Y B	209, 163, 142
Decimal	13737614
CIE Lab	69.44, 16.75, 15.73
CIE LCh	69, 22.981, 43.206
Yxy	39.9620, 0.3795, 0.3494
Android (android.graphics.Color)	4291927694 (0xFFD19E8E)
YUV	171.4250, -14.5065, 32.9533
Hunter-Lab	63.2155, 11.9334, 15.1697

Details

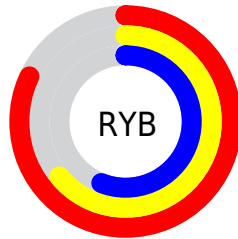
The Yxy color $39.9620, 0.3795, 0.3494$ is a light color, and the websafe version is hex `CC9999`. A complement of this color would be $48.4853, 0.2646, 0.3075$, and the grayscale version is $41.0111, 0.3127, 0.3290$.

A 20% lighter version of the original color is $72.8340, 0.3569, 0.3466$, and $17.8531, 0.3998, 0.3530$ is the 20% darker color. If you saturate the color by 10%, you get $34.3147, 0.4091, 0.3559$, and if you desaturate by 10%, it is $46.4329, 0.3544, 0.3427$.

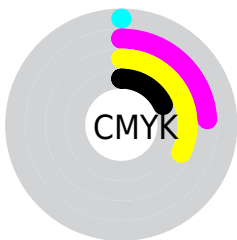
Distribution



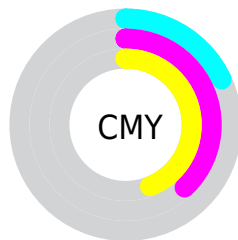
- Red (82%)
- Green (62%)
- Blue (56%)



- Red (82%)
- Yellow (64%)
- Blue (56%)



- Cyan (0%)
- Magenta (24%)
- Yellow (32%)
- Black (18%)




- Cyan (18%)
- Magenta (38%)
- Yellow (44%)

Brightness & Saturation Gradients


These gradients show how the Yxy color 39.9620, 0.3795, 0.3494 changes by changing the brightness by 10 percent. The first figure shows a shift by +10% for each color and the second figure -10%.


Similar to the brightness gradients but the following saturation gradients show a change of the Yxy color 39.9620, 0.3795, 0.3494 by changing the saturation by 10% instead.


 39.9620, 0.3795,
0.3494


 39.9620, 0.3795,
0.3494


345.9634, 0.3449,
0.3398


 27.5089, 0.3885,
0.3515


 75.1056, 0.3667,
0.3461

 17.9558, 0.4002,
0.3541


 98.5650, 0.3619,
0.3448

 10.9183, 0.4160,
0.3572


 126.4619, 0.3580,
0.3437

 6.0119, 0.4387,
0.3608

159.1807, 0.3546,
0.3427

 2.8523, 0.4732,
0.3644

197.1059, 0.3517,
0.3419

 1.0551, 0.5842,
0.4013

240.6218, 0.3491,

 0.0000, 1.0000,

0.3411

0.0000

290.1128, 0.3469,
0.3404

0.0000, 0.0000,
0.0000

39.9620, 0.3795,
0.3494

39.9620, 0.3795,
0.3494

34.3147, 0.4091,
0.3559

46.4329, 0.3544,
0.3427

29.4521, 0.4432,
0.3617

53.7532, 0.3334,
0.3363

25.3402, 0.4812,
0.3659

61.9545, 0.3160,
0.3302

21.9407, 0.5211,
0.3675

71.0649, 0.3014,
0.3246

19.2112, 0.5594,
0.3655

81.1116, 0.2892,
0.3194

■ 17.1047, 0.5916,
0.3595

■ 91.2969, 0.2854,
0.3273

■ 15.8359, 0.6113,
0.3528

■ 92.2970, 0.2855,
0.3289

Harmonies

Analogous

The Analogous color harmony consists of three colors that are next to each other on the color wheel.



39.9620, 0.3647, 0.3214



39.9620, 0.3795, 0.3494



39.9620, 0.3752, 0.3741

Triad

The Triadic color harmony groups three colors that are evenly spaced from another and form a triangle on the color wheel.



39.9620, 0.3795, 0.3494



39.9620, 0.2885, 0.3652



39.9620, 0.2713, 0.2735

Complementary

The Complementary color scheme is a pair of colors which are on the opposite of each other on the color wheel.



39.9620, 0.3795, 0.3494



48.4853, 0.2646, 0.3075

Split Complementary

Split-complementary colors differ from the complementary color scheme. The scheme consists of three colors, the original color and two neighbors of the complement color.



39.9620, 0.2533, 0.2814



39.9620, 0.3795, 0.3494



39.9620, 0.2628, 0.3337

Square

The Square scheme is like the rectangle color scheme, but the four colors are evenly spaced on the color wheel.



39.9620, 0.3795, 0.3494



39.9620, 0.3217, 0.3858



39.9620, 0.2503, 0.3028



39.9620, 0.3009, 0.2792

Rectangle

The Rectangle color scheme consists of four colors that form a rectangle on the color wheel.



39.9620, 0.3795, 0.3494



39.9620, 0.3623, 0.3852



39.9620, 0.2503, 0.3028



39.9620, 0.2638, 0.2746

Sweetspot

The Sweet Spot groups the original color and five complimentary colors.



39.9639, 0.3795, 0.3494



86.7041, 0.3298, 0.3351



36.7623, 0.3313, 0.2669



18.1829, 0.3324, 0.3360



0.0000, 0.0000, 0.0000



21.4041, 0.3127, 0.3290

Same Dimension

The Same Dimension uses a secret algorithm to generate beautiful new colors.



39.9639, 0.3795, 0.3494



56.8889, 0.3978, 0.3536



52.8298, 0.3669, 0.3890



12.2606, 0.3285, 0.3346



9.8915, 0.6089, 0.3547



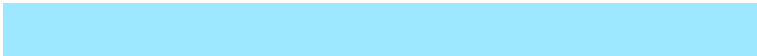
0.6791, 0.5722, 0.3838

Inverse Universe

The Inverse Universe completely reimagines the original color for something new.



48.4853, 0.2646, 0.3075



72.1180, 0.2558, 0.3025



35.4427, 0.2589, 0.2607



12.9080, 0.2983, 0.3233



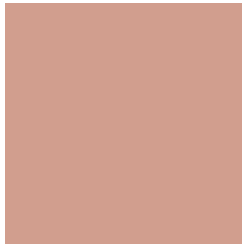
18.2926, 0.2029, 0.2504



1.1410, 0.2074, 0.2665

Previews

White Background



This preview shows how the Yxy color 39.9620, 0.3795, 0.3494 looks on a white background.

Color Contrast Check

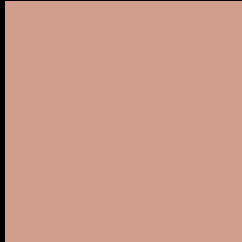
Large Text (above 18pt) WCAG AA × Fail

Any Text WCAG AA × Fail

Large Text (above 18pt) WCAG AAA × Fail

Any Text WCAG AAA × Fail

Black Background



This preview shows how the Yxy color 39.9620, 0.3795, 0.3494 looks on a black background.

Color Contrast Check

Large Text (above 18pt) WCAG AA ✓ Pass

Any Text WCAG AA ✓ Pass

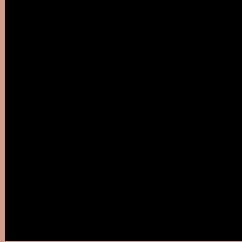
Large Text (above 18pt) WCAG AAA ✓ Pass

Any Text WCAG AAA ✓ Pass

If you want to check with other color combinations, try the [Color Contrast Checker](#).

Yxy 39.9620, 0.3795, 0.3494

Background



This preview shows how black text looks on a background with the Yxy color 39.9620, 0.3795, 0.3494.



This preview shows how white text looks on a background with the Yxy color 39.9620, 0.3795, 0.3494.

Color Blindness Simulation

Color vision deficiency is a very complex topic, and I could not describe the different causes any better than Wikipedia does, so if you want to learn more, you should check out their [article about color blindness](#).

Dichromacy



Original Color

39.9620, 0.3795, 0.3494

Protanopia

39.9790, 0.3395, 0.3582

Deuteranopia

39.8532, 0.3655, 0.3582



Tritanopia

39.8614, 0.3595, 0.3143

Trichromacy



Original Color

39.9620, 0.3795, 0.3494

Protanomaly

39.8044, 0.3531, 0.3547

Deuteranomaly

39.8303, 0.3712, 0.3551

Tritanomaly

39.7259, 0.3673, 0.3267

Monochromacy



Original Color

39.9620, 0.3795, 0.3494

Achromatopsia

40.7240, 0.3127, 0.3290

Achromatomaly

40.1248, 0.3360, 0.3372

CSS Examples

Text

The CSS property to change the color of the text to Yxy 39.9620, 0.3795, 0.3494 is called "color". The color property can be set on classes, ids or directly on the HTML element.

This example shows how text in the color `rgb(209, 158, 142)` looks like.

```
.text, #text, p{  
    color:rgb(209, 158, 142)  
}
```

If you want to add a text shadow in that color use the text-shadow property, you can generate a text shadow directly with our [CSS Text Shadow Generator](#).

Here you see how black text with a 4 pixel rgb(209, 158, 142) colored shadow looks like.

```
.shadow{ text-shadow: 4px 4px 2px rgb(209, 158, 142) }
```

Border

The CSS property to change the border of an element to Yxy 39.9620, 0.3795, 0.3494 is called "border". The border property can be set on classes, ids or directly on the HTML element.

This example shows the color as border, it can be applied via the CSS property "border" or "border-color".

```
.border, #border, table{ border:4px solid rgb(209, 158, 142) }
```

If only the border color should be changed use the property `border-color`.

```
.border{ border-color:rgb(209, 158, 142) }
```

If you want to add a box shadow in that color use:

Here you see how a box with a 4 pixel `rgb(209, 158, 142)` colored shadow looks like.

```
.boxshadow{ -moz-box-shadow:4px 4px 4px  
4px rgb(209, 158, 142); -webkit-box-  
shadow:4px 4px 4px 4px rgb(209, 158, 142);  
box-shadow:4px 4px 4px 4px rgb(209, 158,  
142) }
```


Background

The CSS property to change the background color of an element to Yxy 39.9620, 0.3795, 0.3494 is called "background". The background property can be set on classes, ids or directly on the HTML element.

```
.background, #background, body{  
background: rgb(209, 158, 142) }
```

If only the background color should be changed can be used:

```
.background{ background-color: rgb(209,  
158, 142) }
```

This example shows the color as background, it is applied via the CSS property "background".

To optimize and compress your CSS code, you can use our [online CSS compressor and optimizer](#) based on csstidy. If you want to create a linear or radial gradient as background or border, check our [CSS Gradient Generator](#).

Hey! You found this booklet interesting? Support Converting Colors with the new Membership Option!

The pro membership hides all ads, plus gives you double the colors in the color bucket, and more awesome pro features!

[Learn more, Memberships starting at \\$2.50/m!](#)

**Follow me
on Twitter!**

@ConvertingColor