

# Converting Colors

$Yxy(39.9741, 0.3500, 0.3313)$

Have a look what the booklet for  
Yxy(39.9741, 0.3500, 0.3313)  
contains.

<b>Yxy(39.9987, 0.3507, 0.3317)</b> .....	3
<b>Conversions</b> .....	4
<b>Details</b> .....	6
<b>Harmonies</b> .....	12
<b>Previews</b> .....	24
<b>Color Blindness Simulation</b> .....	27
<b>CSS Examples</b> .....	30

# Color

**Yxy(39.9987, 0.3507, 0.3317)**

# Conversions

## Conversions Part 1

Format	Color
Hex	C6A19F
RGB	198, 161, 159
RGB Percent	78%, 63%, 62%
CMY	0.2236, 0.3686, 0.3764
CMYK	0.00, 0.19, 0.20, 0.22
HSL	3°, 25%, 70%
HSV	3°, 20%, 78%
XYZ	42.2899, 39.9987, 38.2984
YIQ	171.8350, 22.6940, 7.2220

# Conversions

## Conversions Part 2

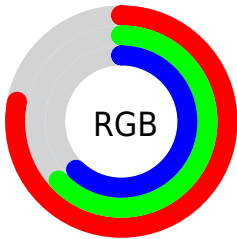
<b>Format</b>	<b>Color</b>
<b>R<sub>YB</sub></b>	198, 161, 159
Decimal	13017503
CIE <sub>Lab</sub>	69.47, 13.31, 6.18
CIE <sub>LCh</sub>	69, 14.678, 24.903
Yxy	39.9987, 0.3507, 0.3317
Android (android.graphics.Color)	4291207583 (0xFFC6A19F)
YUV	171.8350, -6.3277, 22.9467
Hunter-Lab	63.2445, 8.6801, 8.3675

# Details

The Yxy color **39.9987, 0.3507, 0.3317** is a light color, and the websafe version is hex **CC9999**. A complement of this color would be **50.9255, 0.2834, 0.3263**, and the grayscale version is **41.1920, 0.3127, 0.3290**.

A 20% lighter version of the original color is **75.2268, 0.3430, 0.3311**, and **17.9493, 0.3628, 0.3309** is the 20% darker color. If you saturate the color by 10%, you get **33.2869, 0.3770, 0.3332**, and if you desaturate by 10%, it is **47.8106, 0.3294, 0.3303**.

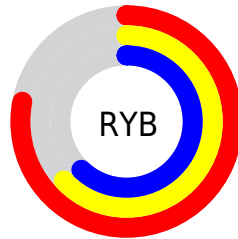
# Distribution



Red (78%)

Green (63%)

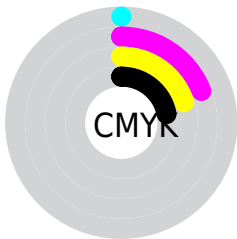
Blue (62%)



Red (78%)

Yellow (63%)

Blue (62%)

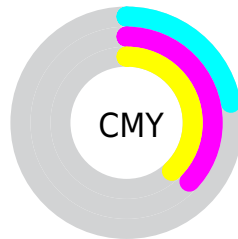


Cyan (0%)

Magenta (19%)

Yellow (20%)

Black (22%)



Cyan (22%)

Magenta (37%)


Yellow (38%)

# Brightness & Saturation Gradients

These gradients show how the Yxy color 39.9987, 0.3507, 0.3317 changes by changing the brightness by 10 percent. The first figure shows a shift by +10% for each color and the second figure -10%.


Similar to the brightness gradients but the following saturation gradients show a change of the Yxy color 39.9987, 0.3507, 0.3317 by changing the saturation by 10% instead.




 39.9987, 0.3507,  
0.3317


 39.9987, 0.3507,  
0.3317


346.1181, 0.3311,  
0.3306

 27.5375, 0.3558,  
0.3319


 75.1615, 0.3434,  
0.3313

 17.9773, 0.3625,  
0.3321


 98.6320, 0.3407,  
0.3312

 10.9337, 0.3716,  
0.3323


126.5410, 0.3385,  
0.3311

 6.0223, 0.3848,  
0.3324

159.2729, 0.3366,  
0.3309

 2.8586, 0.4054,  
0.3320

197.2122, 0.3349,  
0.3308

 1.0584, 0.4451,  
0.3322

240.7433, 0.3335,

 0.0000, 1.0000,

0.3307

0.0000

290.2504, 0.3322,  
0.3307

0.0000, 0.0000,  
0.0000

39.9987, 0.3507,  
0.3317

39.9987, 0.3507,  
0.3317

33.2869, 0.3770,  
0.3332

47.8106, 0.3294,  
0.3303

27.6208, 0.4093,  
0.3347

56.7632, 0.3122,  
0.3290

22.9492, 0.4477,  
0.3360

66.9016, 0.2984,  
0.3278

19.2149, 0.4916,  
0.3368

78.2670, 0.2871,  
0.3267

16.3545, 0.5381,  
0.3370

90.7032, 0.2794,  
0.3288

■ 14.2969, 0.5819,  
0.3362

■ 90.7440, 0.2794,  
0.3289

■ 12.9600, 0.6159,  
0.3344

■ 12.2385, 0.6362,  
0.3327

■ 12.2240, 0.6367,  
0.3327

# Harmonies

## Analogous

The Analogous color harmony consists of three colors that are next to each other on the color wheel.



39.9987, 0.3353, 0.3139



39.9987, 0.3507, 0.3317



39.9987, 0.3556, 0.3495

# Triad

The Triadic color harmony groups three colors that are evenly spaced from another and form a triangle on the color wheel.



39.9987, 0.3507, 0.3317



39.9987, 0.3103, 0.3606



39.9987, 0.2777, 0.2953

# Complementary

The Complementary color scheme is a pair of colors which are on the opposite of each other on the color wheel.



39.9987, 0.3507, 0.3317



50.9255, 0.2834, 0.3263

# Split Complementary

Split-complementary colors differ from the complementary color scheme. The scheme consists of three colors, the original color and two neighbors of the complement color.



39.9987, 0.2716, 0.3064



39.9987, 0.3507, 0.3317



39.9987, 0.2901, 0.3446

# Square

The Square scheme is like the rectangle color scheme, but the four colors are evenly spaced on the color wheel.



39.9987, 0.3507, 0.3317



39.9987, 0.3318, 0.3672



39.9987, 0.2761, 0.3244



39.9987, 0.2930, 0.2932



# Rectangle

The Rectangle color scheme consists of four colors that form a rectangle on the color wheel.



39.9987, 0.3507, 0.3317



39.9987, 0.3521, 0.3592



39.9987, 0.2761, 0.3244



39.9987, 0.2745, 0.2980

# Sweetspot

The Sweet Spot groups the original color and five complimentary colors.



40.0005, 0.3507, 0.3317



90.1384, 0.3228, 0.3298



40.7925, 0.3167, 0.2830



19.0734, 0.3240, 0.3299



0.0000, 0.0000, 0.0000



21.4041, 0.3127, 0.3290



# Same Dimension

The Same Dimension uses a secret algorithm to generate beautiful new colors.



40.0005, 0.3507, 0.3317



65.0477, 0.3623, 0.3324



47.3319, 0.3460, 0.3564



10.7225, 0.3288, 0.3302



7.9890, 0.6358, 0.3334



0.4094, 0.6211, 0.3450



# Inverse Universe

The Inverse Universe completely reimagines the original color for something new.



50.9255, 0.2834, 0.3263



88.2007, 0.2769, 0.3256



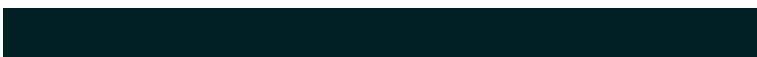
42.7166, 0.2818, 0.3000



11.9709, 0.2984, 0.3278



26.0435, 0.2203, 0.3131

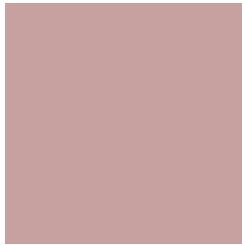


1.2624, 0.2213, 0.3166



# Previews

## White Background



This preview shows how the Yxy color 39.9987, 0.3507, 0.3317 looks on a white background.

## Color Contrast Check

Large Text (above 18pt) WCAG AA × Fail

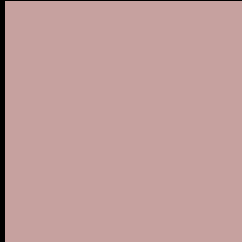
Any Text WCAG AA × Fail

Large Text (above 18pt) WCAG AAA × Fail

Any Text WCAG AAA × Fail



# Black Background



This preview shows how the Yxy color 39.9987, 0.3507, 0.3317 looks on a black background.

## Color Contrast Check

Large Text (above 18pt) WCAG AA ✓ Pass

Any Text WCAG AA ✓ Pass

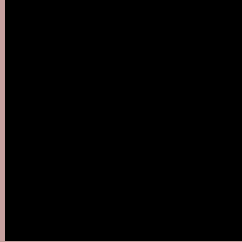
Large Text (above 18pt) WCAG AAA ✓ Pass

Any Text WCAG AAA ✓ Pass

If you want to check with other color combinations, try the [Color Contrast Checker](#).

**Yxy 39.9987, 0.3507, 0.3317**

## **Background**



This preview shows how black text looks on a background with the Yxy color 39.9987, 0.3507, 0.3317.



This preview shows how white text looks on a background with the Yxy color 39.9987, 0.3507, 0.3317.

# Color Blindness Simulation

Color vision deficiency is a very complex topic, and I could not describe the different causes any better than Wikipedia does, so if you want to learn more, you should check out their [article about color blindness](#).

## Dichromacy



### Original Color

39.9987, 0.3507, 0.3317

### Protanopia

40.0189, 0.3225, 0.3373

### Deuteranopia

40.0959, 0.3441, 0.3371



## Tritanopia

39.8787, 0.3406, 0.3137

# Trichromacy



## Original Color

39.9987, 0.3507, 0.3317

## Protanomaly

39.9484, 0.3323, 0.3345

## Deuteranomaly

40.1323, 0.3473, 0.3357

## Tritanomaly

40.0737, 0.3443, 0.3201

# Monochromacy



## Original Color

39.9987, 0.3507, 0.3317

## Achromatopsia

41.2543, 0.3127, 0.3290

## Achromatomaly

40.6190, 0.3256, 0.3304

# CSS Examples

## Text

The CSS property to change the color of the text to Yxy 39.9987, 0.3507, 0.3317 is called "color". The color property can be set on classes, ids or directly on the HTML element.

This example shows how text in the color `rgb(198, 161, 159)` looks like.

```
.text, #text, p{  
    color:rgb(198, 161, 159)  
}
```

If you want to add a text shadow in that color use the text-shadow property, you can generate a text shadow directly with our [CSS Text Shadow Generator](#).

Here you see how black text with a 4 pixel rgb(198, 161, 159) colored shadow looks like.

```
.shadow{ text-shadow: 4px 4px 2px rgb(198, 161, 159) }
```

## Border

The CSS property to change the border of an element to Yxy 39.9987, 0.3507, 0.3317 is called "border". The border property can be set on classes, ids or directly on the HTML element.

This example shows the color as border, it can be applied via the CSS property "border" or "border-color".

```
.border, #border, table{ border:4px solid rgb(198, 161, 159) }
```

If only the border color should be changed use the property `border-color`.

```
.border{ border-color:rgb(198, 161, 159) }
```

If you want to add a box shadow in that color use:

Here you see how a box with a 4 pixel `rgb(198, 161, 159)` colored shadow looks like.

```
.boxshadow{ -moz-box-shadow:4px 4px 4px  
4px rgb(198, 161, 159); -webkit-box-  
shadow:4px 4px 4px 4px rgb(198, 161, 159);  
box-shadow:4px 4px 4px 4px rgb(198, 161,  
159) }
```



# Background

The CSS property to change the background color of an element to Yxy 39.9987, 0.3507, 0.3317 is called "background". The background property can be set on classes, ids or directly on the HTML element.

```
.background, #background, body{  
background: rgb(198, 161, 159) }
```

If only the background color should be changed can be used:

```
.background{ background-color: rgb(198,  
161, 159) }
```

This example shows the color as background, it is applied via the CSS property "background".

To optimize and compress your CSS code, you can use our [online CSS compressor and optimizer](#) based on csstidy. If you want to create a linear or radial gradient as background or border, check our [CSS Gradient Generator](#).

Hey! You found this booklet interesting? Support Converting Colors with the new Membership Option!

The pro membership hides all ads, plus gives you double the colors in the color bucket, and more awesome pro features!

**[Learn more, Memberships starting at \\$2.50/m!](#)**

**Follow me  
on Twitter!**

@ConvertingColor