

Converting Colors

Yxy(39.9852, 0.3441, 0.3269)

Have a look what the booklet for
Yxy(39.9852, 0.3441, 0.3269)
contains.

Yxy(40.0871, 0.3437, 0.3278)	3
<i>Conversions</i>	4
<i>Details</i>	6
<i>Harmonies</i>	12
<i>Previews</i>	24
<i>Color Blindness Simulation</i>	27
<i>CSS Examples</i>	30

Color

Yxy(40.0871, 0.3437, 0.3278)

Conversions

Conversions Part 1

Format	Color
Hex	C3A2A3
RGB	195, 162, 163
RGB Percent	76%, 64%, 64%
CMY	0.2354, 0.3646, 0.3608
CMYK	0.00, 0.17, 0.16, 0.24
HSL	358°, 22%, 70%
HSV	358°, 17%, 76%
XYZ	42.0315, 40.0871, 40.1727
YIQ	171.9810, 19.3470, 7.3070

Conversions

Conversions Part 2

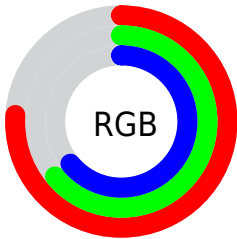
Format	Color
R _Y B	195, 162, 163
Decimal	12821155
CIE Lab	69.53, 12.26, 4.02
CIE LCh	70, 12.906, 18.161
Yxy	40.0871, 0.3437, 0.3278
Android (android.graphics.Color)	4291011235 (0xFFC3A2A3)
YUV	171.9810, -4.4276, 20.1877
Hunter-Lab	63.3144, 7.6979, 6.7008

Details

The Yxy color $40.0871, 0.3437, 0.3278$ is a light color, and the websafe version is hex $CC9999$. A complement of this color would be $50.5954, 0.2881, 0.3302$, and the grayscale version is $41.2601, 0.3127, 0.3290$.

A 20% lighter version of the original color is $75.3831, 0.3378, 0.3281$, and $17.9623, 0.3541, 0.3273$ is the 20% darker color. If you saturate the color by 10%, you get $33.1153, 0.3683, 0.3271$, and if you desaturate by 10%, it is $48.2289, 0.3240, 0.3285$.

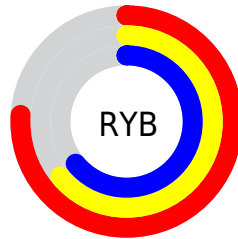
Distribution



Red (76%)

Green (64%)

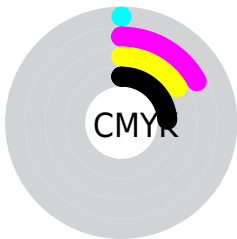
Blue (64%)



Red (76%)

Yellow (64%)

Blue (64%)

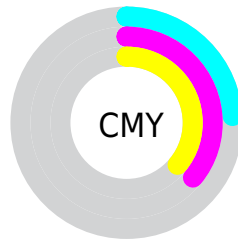


Cyan (0%)

Magenta (17%)

Yellow (16%)

Black (24%)



Cyan (24%)


Magenta (36%)


Yellow (36%)

Brightness & Saturation Gradients

These gradients show how the Yxy color 40.0871, 0.3437, 0.3278 changes by changing the brightness by 10 percent. The first figure shows a shift by +10% for each color and the second figure -10%.


Similar to the brightness gradients but the following saturation gradients show a change of the Yxy color 40.0871, 0.3437, 0.3278 by changing the saturation by 10% instead.


 40.0871, 0.3437,
0.3278


 40.0871, 0.3437,
0.3278


346.4905, 0.3277,
0.3286

 27.6065, 0.3478,
0.3275


 75.2961, 0.3378,
0.3281

 18.0292, 0.3533,
0.3272


 98.7933, 0.3356,
0.3282

 10.9710, 0.3607,
0.3266


126.7315, 0.3338,
0.3283

 6.0473, 0.3714,
0.3257

159.4950, 0.3322,
0.3284

 2.8739, 0.3881,
0.3241

197.4682, 0.3309,
0.3284

 1.0662, 0.4184,
0.3206

241.0357, 0.3297,

 0.0000, 1.0000,

0.3285

0.0000

290.5816, 0.3286,
0.3285

■ 0.0000, 0.0000,
0.0000

■ 40.0871, 0.3437,
0.3278

■ 40.0871, 0.3437,
0.3278

■ 33.1153, 0.3683,
0.3271

■ 48.2289, 0.3240,
0.3285

■ 27.2546, 0.3987,
0.3263

■ 57.5854, 0.3082,
0.3292

■ 22.4494, 0.4355,
0.3257

■ 68.2052, 0.2955,
0.3298

■ 18.6370, 0.4784,
0.3253

■ 80.1330, 0.2853,
0.3304

■ 15.7478, 0.5251,
0.3253

■ 90.3385, 0.2778,
0.3289

■ 13.7038, 0.5708,
0.3259

■ 12.4137, 0.6085,
0.3270

■ 11.7553, 0.6321,
0.3284

■ 11.6113, 0.6371,
0.3283

Harmonies

Analogous

The Analogous color harmony consists of three colors that are next to each other on the color wheel.



40.0871, 0.3286, 0.3125



40.0871, 0.3437, 0.3278



40.0871, 0.3503, 0.3439

Triad

The Triadic color harmony groups three colors that are evenly spaced from another and form a triangle on the color wheel.



40.0871, 0.3437, 0.3278



40.0871, 0.3150, 0.3588



40.0871, 0.2799, 0.3009

Complementary

The Complementary color scheme is a pair of colors which are on the opposite of each other on the color wheel.



40.0871, 0.3437, 0.3278



50.5954, 0.2881, 0.3302

Split Complementary

Split-complementary colors differ from the complementary color scheme. The scheme consists of three colors, the original color and two neighbors of the complement color.



40.0871, 0.2766, 0.3124



40.0871, 0.3437, 0.3278



40.0871, 0.2965, 0.3463

Square

The Square scheme is like the rectangle color scheme, but the four colors are evenly spaced on the color wheel.



40.0871, 0.3437, 0.3278



40.0871, 0.3334, 0.3625



40.0871, 0.2826, 0.3290



40.0871, 0.2918, 0.2971

Rectangle

The Rectangle color scheme consists of four colors that form a rectangle on the color wheel.



40.0871, 0.3437, 0.3278



40.0871, 0.3488, 0.3530



40.0871, 0.2826, 0.3290



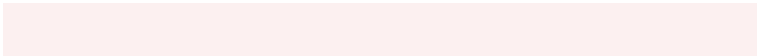
40.0871, 0.2777, 0.3039

Sweetspot

The Sweet Spot groups the original color and five complimentary colors.



40.0889, 0.3437, 0.3278



89.3017, 0.3208, 0.3287



41.2376, 0.3137, 0.2875



19.3054, 0.3221, 0.3286



0.0000, 0.0000, 0.0000



21.4041, 0.3127, 0.3290

Same Dimension

The Same Dimension uses a secret algorithm to generate beautiful new colors.



40.0889, 0.3437, 0.3278



67.3361, 0.3515, 0.3276



45.8084, 0.3414, 0.3489



10.0827, 0.3284, 0.3284



7.5513, 0.6363, 0.3279



0.3280, 0.6227, 0.3204

Inverse Universe

The Inverse Universe completely reimagines the original color for something new.



40.0889, 0.3437, 0.3278



67.3361, 0.3515, 0.3276



44.1001, 0.2865, 0.3083



10.0827, 0.3284, 0.3284



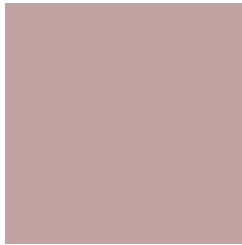
7.5513, 0.6363, 0.3279



0.3280, 0.6227, 0.3204

Previews

White Background



This preview shows how the Yxy color 40.0871, 0.3437, 0.3278 looks on a white background.

Color Contrast Check

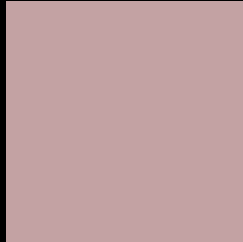
Large Text (above 18pt) WCAG AA × Fail

Any Text WCAG AA × Fail

Large Text (above 18pt) WCAG AAA × Fail

Any Text WCAG AAA × Fail

Black Background



This preview shows how the Yxy color 40.0871, 0.3437, 0.3278 looks on a black background.

Color Contrast Check

Large Text (above 18pt) WCAG AA ✓ Pass

Any Text WCAG AA ✓ Pass

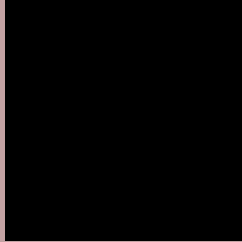
Large Text (above 18pt) WCAG AAA ✓ Pass

Any Text WCAG AAA ✓ Pass

If you want to check with other color combinations, try the [Color Contrast Checker](#).

Yxy 40.0871, 0.3437, 0.3278

Background



This preview shows how black text looks on a background with the Yxy color 40.0871, 0.3437, 0.3278.



This preview shows how white text looks on a background with the Yxy color 40.0871, 0.3437, 0.3278.

Color Blindness Simulation

Color vision deficiency is a very complex topic, and I could not describe the different causes any better than Wikipedia does, so if you want to learn more, you should check out their [article about color blindness](#).

Dichromacy



Original Color

40.0871, 0.3437, 0.3278

Protanopia

40.1646, 0.3190, 0.3318

Deuteranopia

40.0141, 0.3375, 0.3304



Tritanopia

39.8945, 0.3356, 0.3123

Trichromacy



Original Color

40.0871, 0.3437, 0.3278

Protanomaly

39.9707, 0.3277, 0.3290

Deuteranomaly

39.9151, 0.3396, 0.3291

Tritanomaly

40.0901, 0.3392, 0.3187

Monochromacy



Original Color

40.0871, 0.3437, 0.3278

Achromatopsia

41.2543, 0.3127, 0.3290

Achromatomaly

40.5731, 0.3229, 0.3277

CSS Examples

Text

The CSS property to change the color of the text to Yxy 40.0871, 0.3437, 0.3278 is called "color". The color property can be set on classes, ids or directly on the HTML element.

This example shows how text in the color `rgb(195, 162, 163)` looks like.

```
.text, #text, p{  
    color:rgb(195, 162, 163)  
}
```

If you want to add a text shadow in that color use the text-shadow property, you can generate a text shadow directly with our [CSS Text Shadow Generator](#).

Here you see how black text with a 4 pixel rgb(195, 162, 163) colored shadow looks like.

```
.shadow{ text-shadow: 4px 4px 2px rgb(195, 162, 163) }
```

Border

The CSS property to change the border of an element to Yxy 40.0871, 0.3437, 0.3278 is called "border". The border property can be set on classes, ids or directly on the HTML element.

This example shows the color as border, it can be applied via the CSS property "border" or "border-color".

```
.border, #border, table{ border:4px solid rgb(195, 162, 163) }
```

If only the border color should be changed use the property `border-color`.

```
.border{ border-color:rgb(195, 162, 163) }
```

If you want to add a box shadow in that color use:

Here you see how a box with a 4 pixel `rgb(195, 162, 163)` colored shadow looks like.

```
.boxshadow{ -moz-box-shadow:4px 4px 4px  
4px rgb(195, 162, 163); -webkit-box-  
shadow:4px 4px 4px 4px rgb(195, 162, 163);  
box-shadow:4px 4px 4px 4px rgb(195, 162,  
163) }
```


Background

The CSS property to change the background color of an element to Yxy 40.0871, 0.3437, 0.3278 is called "background". The background property can be set on classes, ids or directly on the HTML element.

```
.background, #background, body{  
background: rgb(195, 162, 163) }
```

If only the background color should be changed can be used:

```
.background{ background-color: rgb(195,  
162, 163) }
```

This example shows the color as background, it is applied via the CSS property "background".

To optimize and compress your CSS code, you can use our [online CSS compressor and optimizer](#) based on csstidy. If you want to create a linear or radial gradient as background or border, check our [CSS Gradient Generator](#).

Hey! You found this booklet interesting? Support Converting Colors with the new Membership Option!

The pro membership hides all ads, plus gives you double the colors in the color bucket, and more awesome pro features!

[Learn more, Memberships starting at \\$2.50/m!](#)

**Follow me
on Twitter!**

@ConvertingColor