

Converting Colors

$Y_{xy}(40.0159, 0.3584, 0.3346)$

Have a look what the booklet for
Yxy(40.0159, 0.3584, 0.3346)
contains.

Yxy(40.0985, 0.3579, 0.3343)	3
Conversions	4
Details	6
Harmonies	12
Previews	24
Color Blindness Simulation	27
CSS Examples	30

Color

Yxy(40.0985, 0.3579, 0.3343)

Conversions

Conversions Part 1

Format	Color
Hex	CAA09C
RGB	202, 160, 156
RGB Percent	79%, 63%, 61%
CMY	0.2078, 0.3725, 0.3883
CMYK	0.00, 0.21, 0.23, 0.21
HSL	5°, 30%, 70%
HSV	5°, 23%, 79%
XYZ	42.9293, 40.0985, 36.9199
YIQ	172.1020, 26.3160, 7.6600

Conversions

Conversions Part 2

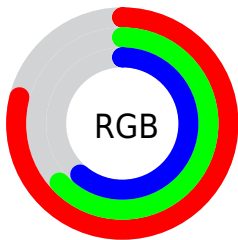
Format	Color
R _Y B	202, 160, 156
Decimal	13279388
CIE Lab	69.54, 14.92, 8.02
CIE LCh	70, 16.939, 28.251
Yxy	40.0985, 0.3579, 0.3343
Android (android.graphics.Color)	4291469468 (0xFFCAA09C)
YUV	172.1020, -7.9383, 26.2205
Hunter-Lab	63.3234, 10.1959, 9.7581

Details

The Yxy color $40.0985, 0.3579, 0.3343$ is a light color, and the websafe version is hex `CC9999`. A complement of this color would be $51.7127, 0.2789, 0.3236$, and the grayscale version is $41.3409, 0.3127, 0.3290$.

A 20% lighter version of the original color is $74.5140, 0.3461, 0.3342$, and $17.9481, 0.3716, 0.3344$ is the 20% darker color. If you saturate the color by 10%, you get $33.5470, 0.3855, 0.3368$, and if you desaturate by 10%, it is $47.7153, 0.3354, 0.3319$.

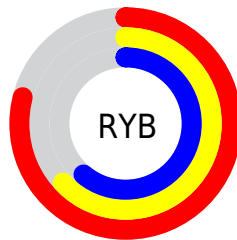
Distribution



Red (79%)

Green (63%)

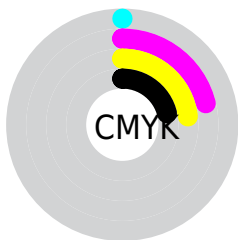
Blue (61%)



Red (79%)

Yellow (63%)

Blue (61%)

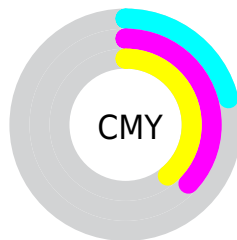


Cyan (0%)

Magenta (21%)

Yellow (23%)

Black (21%)



Cyan (21%)

Magenta (37%)

Yellow (39%)

Brightness & Saturation Gradients


These gradients show how the Yxy color 40.0985, 0.3579, 0.3343 changes by changing the brightness by 10 percent. The first figure shows a shift by +10% for each color and the second figure -10%.


Similar to the brightness gradients but the following saturation gradients show a change of the Yxy color 40.0985, 0.3579, 0.3343 by changing the saturation by 10% instead.


 40.0985, 0.3579,
0.3343

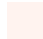
 40.0985, 0.3579,
0.3343


346.5386, 0.3346,
0.3320

 27.6154, 0.3640,
0.3348


 75.3135, 0.3492,
0.3335

 18.0359, 0.3719,
0.3353


 98.8141, 0.3460,
0.3332

 10.9758, 0.3828,
0.3359


126.7560, 0.3434,
0.3329

 6.0505, 0.3984,
0.3364

159.5236, 0.3411,
0.3327

 2.8758, 0.4228,
0.3366

197.5012, 0.3391,
0.3325

 1.0673, 0.4727,
0.3397

241.0734, 0.3374,

 0.0000, 1.0000,

0.3323

0.0000

290.6243, 0.3359,
0.3321

0.0000, 0.0000,
0.0000

40.0985, 0.3579,
0.3343

40.0985, 0.3579,
0.3343

33.5470, 0.3855,
0.3368

47.7153, 0.3354,
0.3319

28.0081, 0.4189,
0.3392

56.4360, 0.3172,
0.3296

23.4328, 0.4581,
0.3412

66.3043, 0.3023,
0.3275

19.7660, 0.5021,
0.3424

77.3596, 0.2903,
0.3256

16.9470, 0.5475,
0.3423

89.5113, 0.2814,
0.3260

■ 14.9076, 0.5888,
0.3406

■ 91.2980, 0.2816,
0.3289

■ 13.5691, 0.6195,
0.3372

■ 12.9797, 0.6339,
0.3349

Harmonies

Analogous

The Analogous color harmony consists of three colors that are next to each other on the color wheel.



40.0985, 0.3411, 0.3137



40.0985, 0.3579, 0.3343



40.0985, 0.3620, 0.3545

Triad

The Triadic color harmony groups three colors that are evenly spaced from another and form a triangle on the color wheel.



40.0985, 0.3579, 0.3343



40.0985, 0.3071, 0.3641



40.0985, 0.2739, 0.2894

Complementary

The Complementary color scheme is a pair of colors which are on the opposite of each other on the color wheel.



40.0985, 0.3579, 0.3343



51.7127, 0.2789, 0.3236

Split Complementary

Split-complementary colors differ from the complementary color scheme. The scheme consists of three colors, the original color and two neighbors of the complement color.



40.0985, 0.2658, 0.3009



40.0985, 0.3579, 0.3343



40.0985, 0.2844, 0.3445

Square

The Square scheme is like the rectangle color scheme, but the four colors are evenly spaced on the color wheel.



40.0985, 0.3579, 0.3343



40.0985, 0.3320, 0.3731



40.0985, 0.2695, 0.3209



40.0985, 0.2924, 0.2884

Rectangle

The Rectangle color scheme consists of four colors that form a rectangle on the color wheel.



40.0985, 0.3579, 0.3343



40.0985, 0.3569, 0.3651



40.0985, 0.2695, 0.3209



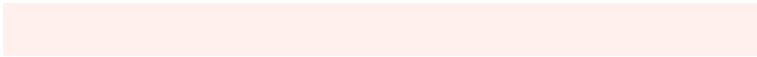
40.0985, 0.2699, 0.2921

Sweetspot

The Sweet Spot groups the original color and five complimentary colors.



40.1003, 0.3579, 0.3343



88.9468, 0.3246, 0.3306



40.4133, 0.3187, 0.2773



18.8440, 0.3257, 0.3307



0.0000, 0.0000, 0.0000



21.4041, 0.3127, 0.3290

Same Dimension

The Same Dimension uses a secret algorithm to generate beautiful new colors.



40.1003, 0.3579, 0.3343



62.5849, 0.3699, 0.3354



48.7549, 0.3517, 0.3628



11.3687, 0.3288, 0.3311



8.4074, 0.6327, 0.3359



0.4894, 0.6104, 0.3536

Inverse Universe

The Inverse Universe completely reimagines the original color for something new.



51.7127, 0.2789, 0.3236



85.4177, 0.2726, 0.3224



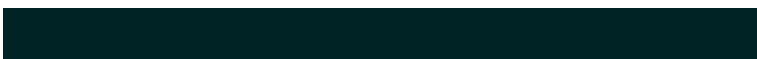
42.0525, 0.2765, 0.2927



12.5527, 0.2983, 0.3269



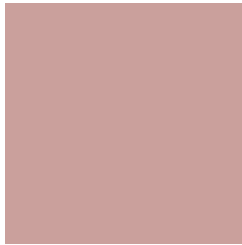
24.9612, 0.2171, 0.3016



1.3381, 0.2187, 0.3074

Previews

White Background



This preview shows how the Yxy color 40.0985, 0.3579, 0.3343 looks on a white background.

Color Contrast Check

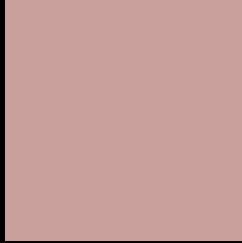
Large Text (above 18pt) WCAG AA × Fail

Any Text WCAG AA × Fail

Large Text (above 18pt) WCAG AAA × Fail

Any Text WCAG AAA × Fail

Black Background



This preview shows how the Yxy color 40.0985, 0.3579, 0.3343 looks on a black background.

Color Contrast Check

Large Text (above 18pt) WCAG AA ✓ Pass

Any Text WCAG AA ✓ Pass

Large Text (above 18pt) WCAG AAA ✓ Pass

Any Text WCAG AAA ✓ Pass

If you want to check with other color combinations, try the [Color Contrast Checker](#).

Yxy 40.0985, 0.3579, 0.3343

Background



This preview shows how black text looks on a background with the Yxy color 40.0985, 0.3579, 0.3343.



This preview shows how white text looks on a background with the Yxy color 40.0985, 0.3579, 0.3343.

Color Blindness Simulation

Color vision deficiency is a very complex topic, and I could not describe the different causes any better than Wikipedia does, so if you want to learn more, you should check out their [article about color blindness](#).

Dichromacy



Original Color

40.0985, 0.3579, 0.3343

Protanopia

40.0631, 0.3251, 0.3401

Deuteranopia

40.1239, 0.3479, 0.3410



Tritanopia

40.1934, 0.3467, 0.3139

Trichromacy



Original Color

40.0985, 0.3579, 0.3343

Protanomaly

40.0899, 0.3369, 0.3385

Deuteranomaly

40.2967, 0.3521, 0.3396

Tritanomaly

40.2094, 0.3503, 0.3215

Monochromacy



Original Color

40.0985, 0.3579, 0.3343

Achromatopsia

41.2543, 0.3127, 0.3290

Achromatomaly

40.8257, 0.3284, 0.3317

CSS Examples

Text

The CSS property to change the color of the text to Yxy 40.0985, 0.3579, 0.3343 is called "color". The color property can be set on classes, ids or directly on the HTML element.

This example shows how text in the color `rgb(202, 160, 156)` looks like.

```
.text, #text, p{  
    color:rgb(202, 160, 156)  
}
```

If you want to add a text shadow in that color use the text-shadow property, you can generate a text shadow directly with our [CSS Text Shadow Generator](#).

Here you see how black text with a 4 pixel rgb(202, 160, 156) colored shadow looks like.

```
.shadow{ text-shadow: 4px 4px 2px rgb(202, 160, 156) }
```

Border

The CSS property to change the border of an element to Yxy 40.0985, 0.3579, 0.3343 is called "border". The border property can be set on classes, ids or directly on the HTML element.

This example shows the color as border, it can be applied via the CSS property "border" or "border-color".

```
.border, #border, table{ border:4px solid rgb(202, 160, 156) }
```

If only the border color should be changed use the property `border-color`.

```
.border{ border-color:rgb(202, 160, 156) }
```

If you want to add a box shadow in that color use:

Here you see how a box with a 4 pixel `rgb(202, 160, 156)` colored shadow looks like.

```
.boxshadow{ -moz-box-shadow:4px 4px 4px  
4px rgb(202, 160, 156); -webkit-box-  
shadow:4px 4px 4px 4px rgb(202, 160, 156);  
box-shadow:4px 4px 4px 4px rgb(202, 160,  
156) }
```


Background

The CSS property to change the background color of an element to Yxy 40.0985, 0.3579, 0.3343 is called "background". The background property can be set on classes, ids or directly on the HTML element.

```
.background, #background, body{  
background: rgb(202, 160, 156) }
```

If only the background color should be changed can be used:

```
.background{ background-color: rgb(202,  
160, 156) }
```

This example shows the color as background, it is applied via the CSS property "background".

To optimize and compress your CSS code, you can use our [online CSS compressor and optimizer](#) based on csstidy. If you want to create a linear or radial gradient as background or border, check our [CSS Gradient Generator](#).

Hey! You found this booklet interesting? Support Converting Colors with the new Membership Option!

The pro membership hides all ads, plus gives you double the colors in the color bucket, and more awesome pro features!

[Learn more, Memberships starting at \\$2.50/m!](#)

**Follow me
on Twitter!**

@ConvertingColor