

Converting Colors

$Y_{xy}(40.0860, 0.3395, 0.3346)$

Have a look what the booklet for
Yxy(40.0860, 0.3395, 0.3346)
contains.

Yxy(40.2671, 0.3401, 0.3357)	3
Conversions	4
Details	6
Harmonies	12
Previews	24
Color Blindness Simulation	27
CSS Examples	30

Color

Yxy(40.2671, 0.3401, 0.3357)

Conversions

Conversions Part 1

Format	Color
Hex	BDA5A0
RGB	189, 165, 160
RGB Percent	74%, 65%, 63%
CMY	0.2587, 0.3530, 0.3725
CMYK	0.00, 0.13, 0.15, 0.26
HSL	10°, 18%, 68%
HSV	10°, 15%, 74%
XYZ	40.7949, 40.2671, 38.8877
YIQ	171.6060, 15.9090, 3.5330

Conversions

Conversions Part 2

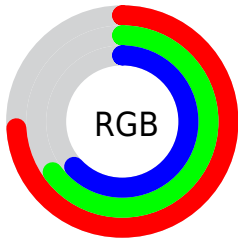
Format	Color
R_{YB}	189, 166, 160
Decimal	12428704
CIE _{Lab}	69.66, 7.94, 5.79
CIE _{LCh}	70, 9.825, 36.100
Yxy	40.2671, 0.3401, 0.3357
Android (android.graphics.Color)	4290618784 (0xFFBDA5A0)
YUV	171.6060, -5.7218, 15.2545
Hunter-Lab	63.4564, 3.7056, 8.0850

Details

The Yxy color $40.2671, 0.3401, 0.3357$ is a light color, and the websafe version is hex `CC9999`. A complement of this color would be $45.4608, 0.2895, 0.3222$, and the grayscale version is $41.0722, 0.3127, 0.3290$.

A 20% lighter version of the original color is $75.5052, 0.3343, 0.3342$, and $18.0653, 0.3475, 0.3364$ is the 20% darker color. If you saturate the color by 10%, you get $34.3476, 0.3628, 0.3404$, and if you desaturate by 10%, it is $46.9830, 0.3214, 0.3313$.

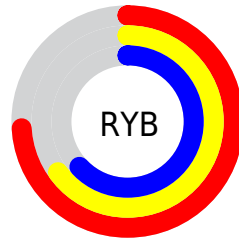
Distribution



Red (74%)

Green (65%)

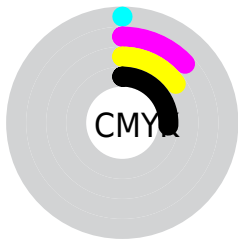
Blue (63%)



Red (74%)

Yellow (65%)

Blue (63%)

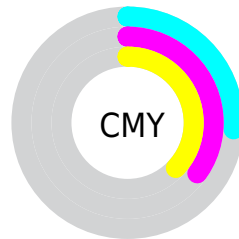


Cyan (0%)

Magenta (13%)

Yellow (15%)

Black (26%)



Cyan (26%)


Magenta (35%)

Yellow (37%)

Brightness & Saturation Gradients

These gradients show how the Yxy color 40.2671, 0.3401, 0.3357 changes by changing the brightness by 10 percent. The first figure shows a shift by +10% for each color and the second figure -10%.


Similar to the brightness gradients but the following saturation gradients show a change of the Yxy color 40.2671, 0.3401, 0.3357 by changing the saturation by 10% instead.


 40.2671, 0.3401,
0.3357

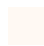
 40.2671, 0.3401,
0.3357


347.2481, 0.3260,
0.3324

 27.7469, 0.3438,
0.3365


 75.5701, 0.3349,
0.3345

 18.1349, 0.3485,
0.3375


 99.1216, 0.3329,
0.3341

 11.0469, 0.3551,
0.3388


127.1190, 0.3313,
0.3337

 6.0984, 0.3645,
0.3406

159.9467, 0.3299,
0.3334

 2.9050, 0.3793,
0.3431

197.9890, 0.3287,
0.3331

 1.0823, 0.4074,
0.3482

241.6305, 0.3277,

 0.0000, 1.0000,

0.3328

0.0000

291.2553, 0.3268,
0.3326

0.0000, 0.0000,
0.0000

40.2671, 0.3401,
0.3357

40.2671, 0.3401,
0.3357

34.3476, 0.3628,
0.3404

46.9830, 0.3214,
0.3313

29.1898, 0.3902,
0.3452

54.5179, 0.3059,
0.3271

24.7641, 0.4227,
0.3497

62.9001, 0.2932,
0.3234

21.0371, 0.4603,
0.3534

72.1548, 0.2826,
0.3199

17.9727, 0.5016,
0.3557

82.3064, 0.2738,
0.3168

■ 15.5315, 0.5438,
0.3556

■ 89.5639, 0.2747,
0.3289

■ 13.6698, 0.5823,
0.3525

■ 12.3380, 0.6119,
0.3464

■ 11.8775, 0.6228,
0.3437

Harmonies

Analogous

The Analogous color harmony consists of three colors that are next to each other on the color wheel.



40.2671, 0.3323, 0.3232



40.2671, 0.3401, 0.3357



40.2671, 0.3404, 0.3468

Triad

The Triadic color harmony groups three colors that are evenly spaced from another and form a triangle on the color wheel.



40.2671, 0.3401, 0.3357



40.2671, 0.3059, 0.3465



40.2671, 0.2924, 0.3051

Complementary

The Complementary color scheme is a pair of colors which are on the opposite of each other on the color wheel.



40.2671, 0.3401, 0.3357



45.4608, 0.2895, 0.3222

Split Complementary

Split-complementary colors differ from the complementary color scheme. The scheme consists of three colors, the original color and two neighbors of the complement color.



40.2671, 0.2857, 0.3106



40.2671, 0.3401, 0.3357



40.2671, 0.2934, 0.3346

Square

The Square scheme is like the rectangle color scheme, but the four colors are evenly spaced on the color wheel.



40.2671, 0.3401, 0.3357



40.2671, 0.3204, 0.3535



40.2671, 0.2861, 0.3213



40.2671, 0.3046, 0.3058

Rectangle

The Rectangle color scheme consists of four colors that form a rectangle on the color wheel.



40.2671, 0.3401, 0.3357



40.2671, 0.3363, 0.3519



40.2671, 0.2861, 0.3213



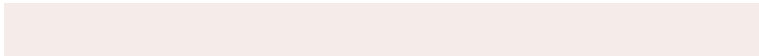
40.2671, 0.2895, 0.3062

Sweetspot

The Sweet Spot groups the original color and five complimentary colors.



40.2689, 0.3401, 0.3357



84.4548, 0.3209, 0.3311



39.4410, 0.3187, 0.2976



17.9692, 0.3221, 0.3314



95.5105, 0.3127, 0.3290



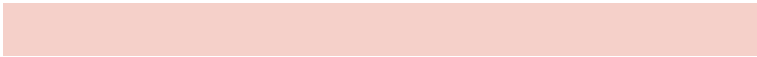
19.5994, 0.3127, 0.3290

Same Dimension

The Same Dimension uses a secret algorithm to generate beautiful new colors.



40.2689, 0.3401, 0.3357



68.8313, 0.3463, 0.3371



45.7496, 0.3373, 0.3544



9.7935, 0.3284, 0.3330



8.0668, 0.6210, 0.3451



0.3989, 0.5789, 0.3786

Inverse Universe

The Inverse Universe completely reimagines the original color for something new.



45.4608, 0.2895, 0.3222



79.6760, 0.2852, 0.3208



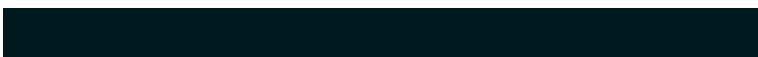
39.7854, 0.2887, 0.3022



10.5238, 0.2985, 0.3250



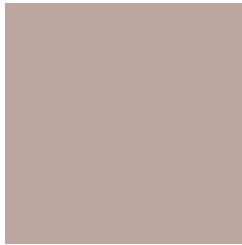
18.7100, 0.2095, 0.2741



0.8075, 0.2135, 0.2886

Previews

White Background



This preview shows how the Yxy color 40.2671, 0.3401, 0.3357 looks on a white background.

Color Contrast Check

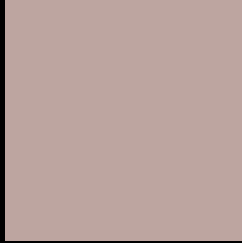
Large Text (above 18pt) WCAG AA × Fail

Any Text WCAG AA × Fail

Large Text (above 18pt) WCAG AAA × Fail

Any Text WCAG AAA × Fail

Black Background



This preview shows how the Yxy color 40.2671, 0.3401, 0.3357 looks on a black background.

Color Contrast Check

Large Text (above 18pt) WCAG AA ✓ Pass

Any Text WCAG AA ✓ Pass

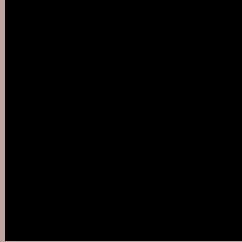
Large Text (above 18pt) WCAG AAA ✓ Pass

Any Text WCAG AAA ✓ Pass

If you want to check with other color combinations, try the [Color Contrast Checker](#).

Yxy 40.2671, 0.3401, 0.3357

Background



This preview shows how black text looks on a background with the Yxy color 40.2671, 0.3401, 0.3357.



This preview shows how white text looks on a background with the Yxy color 40.2671, 0.3401, 0.3357.

Color Blindness Simulation

Color vision deficiency is a very complex topic, and I could not describe the different causes any better than Wikipedia does, so if you want to learn more, you should check out their [article about color blindness](#).

Dichromacy



Original Color

40.2671, 0.3401, 0.3357

Protanopia

40.5078, 0.3233, 0.3387

Deuteranopia

40.1654, 0.3422, 0.3344



Tritanopia

40.3659, 0.3286, 0.3134

Trichromacy



Original Color

40.2671, 0.3401, 0.3357

Protanomaly

40.3172, 0.3291, 0.3372

Deuteranomaly

40.0361, 0.3412, 0.3344

Tritanomaly

40.4003, 0.3320, 0.3212

Monochromacy



Original Color

40.2671, 0.3401, 0.3357

Achromatopsia

41.2543, 0.3127, 0.3290

Achromatomaly

40.6681, 0.3218, 0.3304

CSS Examples

Text

The CSS property to change the color of the text to Yxy 40.2671, 0.3401, 0.3357 is called "color". The color property can be set on classes, ids or directly on the HTML element.

This example shows how text in the color `rgb(189, 165, 160)` looks like.

```
.text, #text, p{  
    color:rgb(189, 165, 160)  
}
```

If you want to add a text shadow in that color use the text-shadow property, you can generate a text shadow directly with our [CSS Text Shadow Generator](#).

Here you see how black text with a 4 pixel rgb(189, 165, 160) colored shadow looks like.

```
.shadow{ text-shadow: 4px 4px 2px rgb(189, 165, 160) }
```

Border

The CSS property to change the border of an element to Yxy 40.2671, 0.3401, 0.3357 is called "border". The border property can be set on classes, ids or directly on the HTML element.

This example shows the color as border, it can be applied via the CSS property "border" or "border-color".

```
.border, #border, table{ border:4px solid rgb(189, 165, 160) }
```

If only the border color should be changed use the property `border-color`.

```
.border{ border-color:rgb(189, 165, 160) }
```

If you want to add a box shadow in that color use:

Here you see how a box with a 4 pixel `rgb(189, 165, 160)` colored shadow looks like.

```
.boxshadow{ -moz-box-shadow:4px 4px 4px  
4px rgb(189, 165, 160); -webkit-box-  
shadow:4px 4px 4px 4px rgb(189, 165, 160);  
box-shadow:4px 4px 4px 4px rgb(189, 165,  
160) }
```


Background

The CSS property to change the background color of an element to Yxy 40.2671, 0.3401, 0.3357 is called "background". The background property can be set on classes, ids or directly on the HTML element.

```
.background, #background, body{  
background: rgb(189, 165, 160) }
```

If only the background color should be changed can be used:

```
.background{ background-color: rgb(189,  
165, 160) }
```

This example shows the color as background, it is applied via the CSS property "background".

To optimize and compress your CSS code, you can use our [online CSS compressor and optimizer](#) based on csstidy. If you want to create a linear or radial gradient as background or border, check our [CSS Gradient Generator](#).

Hey! You found this booklet interesting? Support Converting Colors with the new Membership Option!

The pro membership hides all ads, plus gives you double the colors in the color bucket, and more awesome pro features!

[Learn more, Memberships starting at \\$2.50/m!](#)

**Follow me
on Twitter!**

@ConvertingColor