

Converting Colors

$Yxy(40.1150, 0.3805, 0.3487)$

Have a look what the booklet for
Yxy(40.1150, 0.3805, 0.3487)
contains.

Yxy(40.1084, 0.3805, 0.3493)	3
Conversions	4
Details	6
Harmonies	12
Previews	24
Color Blindness Simulation	27
CSS Examples	30

Color

Yxy(40.1084, 0.3805, 0.3493)

Conversions

Conversions Part 1

Format	Color
Hex	D29E8E
RGB	210, 158, 142
RGB Percent	82%, 62%, 56%
CMY	0.1764, 0.3804, 0.4432
CMYK	0.00, 0.25, 0.32, 0.18
HSL	14°, 43%, 69%
HSV	14°, 32%, 82%
XYZ	43.6909, 40.1084, 31.0257
YIQ	171.7240, 36.1280, 6.0480

Conversions

Conversions Part 2

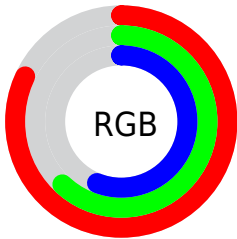
Format	Color
RYB	210, 163, 142
Decimal	13803150
CIELab	69.55, 17.15, 15.89
CIELCh	70, 23.374, 42.815
Yxy	40.1084, 0.3805, 0.3493
Android (android.graphics.Color)	4291993230 (0xFFD29E8E)
YUV	171.7240, -14.6539, 33.5681
Hunter-Lab	63.3312, 12.3140, 15.2859

Details

The Yxy color **40.1084, 0.3805, 0.3493** is a light color, and the websafe version is hex **CC9999**. A complement of this color would be **48.9921, 0.2642, 0.3075**, and the grayscale version is **41.1711, 0.3127, 0.3290**.

A 20% lighter version of the original color is **72.8340, 0.3569, 0.3466**, and **17.9508, 0.4012, 0.3528** is the 20% darker color. If you saturate the color by 10%, you get **34.4124, 0.4103, 0.3557**, and if you desaturate by 10%, it is **46.6430, 0.3552, 0.3427**.

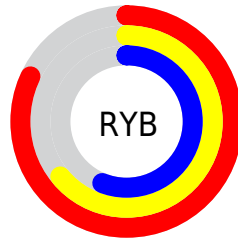
Distribution



Red (82%)

Green (62%)

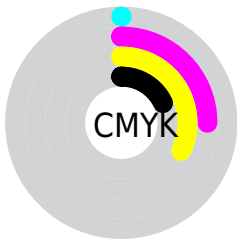
Blue (56%)



Red (82%)

Yellow (64%)

Blue (56%)

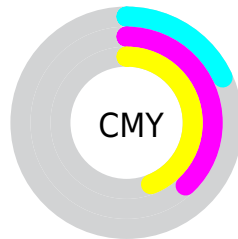


Cyan (0%)

Magenta (25%)

Yellow (32%)

Black (18%)



Cyan (18%)


Magenta (38%)


Yellow (44%)

Brightness & Saturation Gradients


These gradients show how the Yxy color 40.1084, 0.3805, 0.3493 changes by changing the brightness by 10 percent. The first figure shows a shift by +10% for each color and the second figure -10%.


Similar to the brightness gradients but the following saturation gradients show a change of the Yxy color 40.1084, 0.3805, 0.3493 by changing the saturation by 10% instead.

 40.1084, 0.3805,
0.3493


 40.1084, 0.3805,
0.3493


346.5802, 0.3454,
0.3398

 27.6231, 0.3896,
0.3514


 75.3286, 0.3675,
0.3460

 18.0417, 0.4014,
0.3539


 98.8322, 0.3627,
0.3448

 10.9799, 0.4175,
0.3569


 126.7773, 0.3587,
0.3436

 6.0534, 0.4404,
0.3604

159.5484, 0.3552,
0.3427

 2.8775, 0.4753,
0.3637

197.5299, 0.3523,
0.3418

 1.0681, 0.5858,
0.3992

241.1061, 0.3497,

 0.0000, 1.0000,

0.3411

0.0000

290.6614, 0.3474,
0.3404

■ 0.0000, 0.0000,
0.0000

■ 40.1084, 0.3805,
0.3493

■ 40.1084, 0.3805,
0.3493

■ 34.4124, 0.4103,
0.3557

■ 46.6430, 0.3552,
0.3427

■ 29.5150, 0.4448,
0.3614

■ 54.0428, 0.3341,
0.3364

■ 25.3816, 0.4830,
0.3654

■ 62.3402, 0.3165,
0.3304

■ 21.9724, 0.5231,
0.3669

■ 71.5640, 0.3018,
0.3248

■ 19.2441, 0.5613,
0.3647

■ 81.7420, 0.2896,
0.3197

■ 17.1480, 0.5933,
0.3585

■ 92.0347, 0.2860,
0.3283

■ 15.9364, 0.6121,
0.3522

■ 92.4444, 0.2860,
0.3289

Harmonies

Analogous

The Analogous color harmony consists of three colors that are next to each other on the color wheel.



40.1084, 0.3652, 0.3209



40.1084, 0.3805, 0.3493



40.1084, 0.3763, 0.3745

Triad

The Triadic color harmony groups three colors that are evenly spaced from another and form a triangle on the color wheel.



40.1084, 0.3805, 0.3493



40.1084, 0.2886, 0.3662



40.1084, 0.2703, 0.2727

Complementary

The Complementary color scheme is a pair of colors which are on the opposite of each other on the color wheel.



40.1084, 0.3805, 0.3493



48.9921, 0.2642, 0.3075

Split Complementary

Split-complementary colors differ from the complementary color scheme. The scheme consists of three colors, the original color and two neighbors of the complement color.



40.1084, 0.2523, 0.2809



40.1084, 0.3805, 0.3493



40.1084, 0.2623, 0.3342

Square

The Square scheme is like the rectangle color scheme, but the four colors are evenly spaced on the color wheel.



40.1084, 0.3805, 0.3493



40.1084, 0.3223, 0.3869



40.1084, 0.2494, 0.3027



40.1084, 0.3002, 0.2783

Rectangle

The Rectangle color scheme consists of four colors that form a rectangle on the color wheel.



40.1084, 0.3805, 0.3493



40.1084, 0.3634, 0.3860



40.1084, 0.2494, 0.3027



40.1084, 0.2627, 0.2739

Sweetspot

The Sweet Spot groups the original color and five complimentary colors.



40.1103, 0.3805, 0.3493



86.6489, 0.3298, 0.3350



36.9490, 0.3315, 0.2662



18.1696, 0.3324, 0.3358



0.0000, 0.0000, 0.0000



21.4041, 0.3127, 0.3290

Same Dimension

The Same Dimension uses a secret algorithm to generate beautiful new colors.



40.1103, 0.3805, 0.3493



55.8662, 0.4010, 0.3539



53.3026, 0.3676, 0.3896



12.2534, 0.3285, 0.3345



9.8488, 0.6097, 0.3541



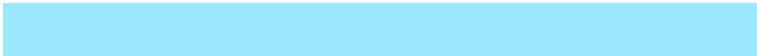
0.6757, 0.5731, 0.3832

Inverse Universe

The Inverse Universe completely reimagines the original color for something new.



48.9921, 0.2642, 0.3075



71.7300, 0.2545, 0.3021



35.5911, 0.2583, 0.2599



12.9158, 0.2983, 0.3234



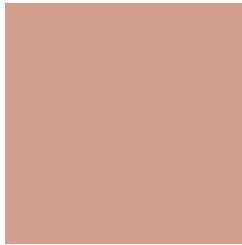
18.4588, 0.2033, 0.2517



1.1491, 0.2077, 0.2675

Previews

White Background



This preview shows how the Yxy color 40.1084, 0.3805, 0.3493 looks on a white background.

Color Contrast Check

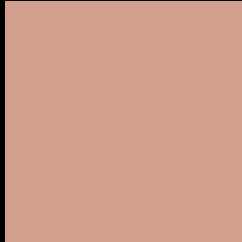
Large Text (above 18pt) WCAG AA × Fail

Any Text WCAG AA × Fail

Large Text (above 18pt) WCAG AAA × Fail

Any Text WCAG AAA × Fail

Black Background



This preview shows how the Yxy color 40.1084, 0.3805, 0.3493 looks on a black background.

Color Contrast Check

Large Text (above 18pt) WCAG AA ✓ Pass

Any Text WCAG AA ✓ Pass

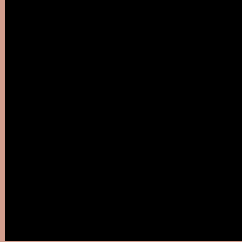
Large Text (above 18pt) WCAG AAA ✓ Pass

Any Text WCAG AAA ✓ Pass

If you want to check with other color combinations, try the [Color Contrast Checker](#).

Yxy 40.1084, 0.3805, 0.3493

Background



This preview shows how black text looks on a background with the Yxy color 40.1084, 0.3805, 0.3493.



This preview shows how white text looks on a background with the Yxy color 40.1084, 0.3805, 0.3493.

Color Blindness Simulation

Color vision deficiency is a very complex topic, and I could not describe the different causes any better than Wikipedia does, so if you want to learn more, you should check out their [article about color blindness](#).

Dichromacy



Original Color

40.1084, 0.3805, 0.3493

Protanopia

40.3525, 0.3393, 0.3595

Deuteranopia

40.3443, 0.3662, 0.3593



Tritanopia

40.0105, 0.3605, 0.3144

Trichromacy



Original Color

40.1084, 0.3805, 0.3493

Protanomaly

40.2949, 0.3538, 0.3559

Deuteranomaly

40.3203, 0.3719, 0.3563

Tritanomaly

39.8741, 0.3683, 0.3267

Monochromacy



Original Color

40.1084, 0.3805, 0.3493

Achromatopsia

41.2543, 0.3127, 0.3290

Achromatomaly

40.6497, 0.3359, 0.3371

CSS Examples

Text

The CSS property to change the color of the text to Yxy 40.1084, 0.3805, 0.3493 is called "color". The color property can be set on classes, ids or directly on the HTML element.

This example shows how text in the color `rgb(210, 158, 142)` looks like.

```
.text, #text, p{  
    color:rgb(210, 158, 142)  
}
```

If you want to add a text shadow in that color use the text-shadow property, you can generate a text shadow directly with our [CSS Text Shadow Generator](#).

Here you see how black text with a 4 pixel rgb(210, 158, 142) colored shadow looks like.

```
.shadow{ text-shadow: 4px 4px 2px rgb(210, 158, 142) }
```

Border

The CSS property to change the border of an element to Yxy 40.1084, 0.3805, 0.3493 is called "border". The border property can be set on classes, ids or directly on the HTML element.

This example shows the color as border, it can be applied via the CSS property "border" or "border-color".

```
.border, #border, table{ border:4px solid rgb(210, 158, 142) }
```

If only the border color should be changed use the property `border-color`.

```
.border{ border-color:rgb(210, 158, 142) }
```

If you want to add a box shadow in that color use:

Here you see how a box with a 4 pixel `rgb(210, 158, 142)` colored shadow looks like.

```
.boxshadow{ -moz-box-shadow:4px 4px 4px  
4px rgb(210, 158, 142); -webkit-box-  
shadow:4px 4px 4px 4px rgb(210, 158, 142);  
box-shadow:4px 4px 4px 4px rgb(210, 158,  
142) }
```


Background

The CSS property to change the background color of an element to Yxy 40.1084, 0.3805, 0.3493 is called "background". The background property can be set on classes, ids or directly on the HTML element.

```
.background, #background, body{  
background: rgb(210, 158, 142) }
```

If only the background color should be changed can be used:

```
.background{ background-color: rgb(210,  
158, 142) }
```

This example shows the color as background, it is applied via the CSS property "background".

To optimize and compress your CSS code, you can use our [online CSS compressor and optimizer](#) based on csstidy. If you want to create a linear or radial gradient as background or border, check our [CSS Gradient Generator](#).

Hey! You found this booklet interesting? Support Converting Colors with the new Membership Option!

The pro membership hides all ads, plus gives you double the colors in the color bucket, and more awesome pro features!

[Learn more, Memberships starting at \\$2.50/m!](#)

**Follow me
on Twitter!**

@ConvertingColor