

Converting Colors

$Y_{xy}(40.1274, 0.3602, 0.3364)$

Have a look what the booklet for
Yxy(40.1274, 0.3602, 0.3364)
contains.

Yxy(40.1712, 0.3608, 0.3368)	3
<i>Conversions</i>	4
<i>Details</i>	6
<i>Harmonies</i>	12
<i>Previews</i>	24
<i>Color Blindness Simulation</i>	27
<i>CSS Examples</i>	30

Color

Yxy(40.1712, 0.3608, 0.3368)

Conversions

Conversions Part 1

Format	Color
Hex	CBA09A
RGB	203, 160, 154
RGB Percent	80%, 63%, 60%
CMY	0.2039, 0.3725, 0.3960
CMYK	0.00, 0.21, 0.24, 0.20
HSL	7°, 32%, 70%
HSV	7°, 24%, 80%
XYZ	43.0338, 40.1712, 36.0682
YIQ	172.1730, 27.5540, 7.2500

Conversions

Conversions Part 2

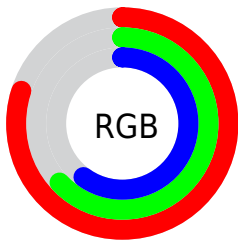
Format	Color
R _Y B	203, 161, 154
Decimal	13344922
CIE Lab	69.59, 15.01, 9.19
CIE LCh	70, 17.598, 31.472
Yxy	40.1712, 0.3608, 0.3368
Android (android.graphics.Color)	4291535002 (0xFFCBA09A)
YUV	172.1730, -8.9593, 27.0353
Hunter-Lab	63.3808, 10.2802, 10.6263

Details

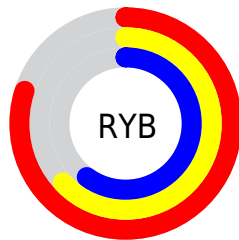
The Yxy color $40.1712, 0.3608, 0.3368$ is a light color, and the websafe version is hex $CC9999$. A complement of this color would be $51.1274, 0.2768, 0.3210$, and the grayscale version is $41.3845, 0.3127, 0.3290$.

A 20% lighter version of the original color is $74.4149, 0.3476, 0.3362$, and $18.0003, 0.3759, 0.3379$ is the 20% darker color. If you saturate the color by 10%, you get $33.8098, 0.3886, 0.3403$, and if you desaturate by 10%, it is $47.5366, 0.3380, 0.3334$.

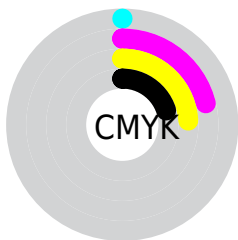
Distribution



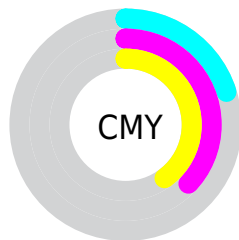
- Red (80%)
- Green (63%)
- Blue (60%)



- Red (80%)
- Yellow (63%)
- Blue (60%)



- Cyan (0%)
- Magenta (21%)
- Yellow (24%)
- Black (20%)




- Cyan (20%)
- Magenta (37%)
- Yellow (40%)

Brightness & Saturation Gradients


These gradients show how the Yxy color 40.1712, 0.3608, 0.3368 changes by changing the brightness by 10 percent. The first figure shows a shift by +10% for each color and the second figure -10%.

Similar to the brightness gradients but the following saturation gradients show a change of the Yxy color 40.1712, 0.3608, 0.3368 by changing the saturation by 10% instead.


 40.1712, 0.3608,
0.3368

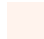
 40.1712, 0.3608,
0.3368

346.8446, 0.3360,
0.3332

 27.6721, 0.3673,
0.3376


 75.4241, 0.3516,
0.3356

 18.0786, 0.3757,
0.3385


 98.9467, 0.3482,
0.3351

 11.0064, 0.3872,
0.3395


126.9126, 0.3453,
0.3347

 6.0712, 0.4038,
0.3407

159.7061, 0.3429,
0.3343

 2.8884, 0.4297,
0.3417

197.7116, 0.3408,
0.3340

 1.0737, 0.4852,
0.3482

241.3137, 0.3390,

 0.0000, 1.0000,

0.3337

0.0000

290.8965, 0.3374,
0.3335

■ 0.0000, 0.0000,
0.0000

■ 40.1712, 0.3608,
0.3368

■ 40.1712, 0.3608,
0.3368

■ 33.8098, 0.3886,
0.3403

■ 47.5366, 0.3380,
0.3334

■ 28.4035, 0.4219,
0.3435

■ 55.9409, 0.3194,
0.3302

■ 23.9078, 0.4608,
0.3462

■ 65.4245, 0.3042,
0.3273

■ 20.2723, 0.5040,
0.3478

■ 76.0237, 0.2917,
0.3246

■ 17.4417, 0.5482,
0.3476

■ 87.7393, 0.2818,
0.3228

■ 15.3544, 0.5882,
0.3451

■ 91.4366, 0.2822,
0.3289

■ 13.9394, 0.6180,
0.3404

■ 13.3822, 0.6303,
0.3378

Harmonies

Analogous

The Analogous color harmony consists of three colors that are next to each other on the color wheel.



40.1712, 0.3446, 0.3153



40.1712, 0.3608, 0.3368



40.1712, 0.3634, 0.3574

Triad

The Triadic color harmony groups three colors that are evenly spaced from another and form a triangle on the color wheel.



40.1712, 0.3608, 0.3368



40.1712, 0.3041, 0.3638



40.1712, 0.2741, 0.2873

Complementary

The Complementary color scheme is a pair of colors which are on the opposite of each other on the color wheel.



40.1712, 0.3608, 0.3368



51.1274, 0.2768, 0.3210

Split Complementary

Split-complementary colors differ from the complementary color scheme. The scheme consists of three colors, the original color and two neighbors of the complement color.



40.1712, 0.2644, 0.2980



40.1712, 0.3608, 0.3368



40.1712, 0.2811, 0.3425

Square

The Square scheme is like the rectangle color scheme, but the four colors are evenly spaced on the color wheel.



40.1712, 0.3608, 0.3368



40.1712, 0.3300, 0.3745



40.1712, 0.2669, 0.3180



40.1712, 0.2941, 0.2874

Rectangle

The Rectangle color scheme consists of four colors that form a rectangle on the color wheel.



40.1712, 0.3608, 0.3368



40.1712, 0.3572, 0.3679



40.1712, 0.2669, 0.3180



40.1712, 0.2696, 0.2897

Sweetspot

The Sweet Spot groups the original color and five complimentary colors.



40.1731, 0.3608, 0.3368



89.3087, 0.3245, 0.3312



39.8606, 0.3206, 0.2760



18.9275, 0.3256, 0.3314



0.0000, 0.0000, 0.0000



21.4041, 0.3127, 0.3290

Same Dimension

The Same Dimension uses a secret algorithm to generate beautiful new colors.



40.1731, 0.3608, 0.3368



61.4577, 0.3748, 0.3386



49.4058, 0.3539, 0.3669



11.4306, 0.3287, 0.3319



8.5884, 0.6287, 0.3390



0.5182, 0.6000, 0.3618

Inverse Universe

The Inverse Universe completely reimagines the original color for something new.



51.1274, 0.2768, 0.3210



82.9460, 0.2695, 0.3191



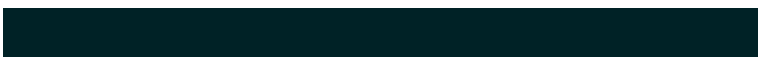
40.9946, 0.2741, 0.2879



12.4842, 0.2983, 0.3261



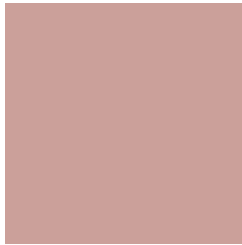
23.1545, 0.2140, 0.2904



1.2619, 0.2163, 0.2986

Previews

White Background



This preview shows how the Yxy color 40.1712, 0.3608, 0.3368 looks on a white background.

Color Contrast Check

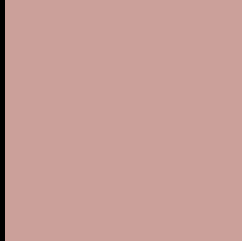
Large Text (above 18pt) WCAG AA × Fail

Any Text WCAG AA × Fail

Large Text (above 18pt) WCAG AAA × Fail

Any Text WCAG AAA × Fail

Black Background



This preview shows how the Yxy color 40.1712, 0.3608, 0.3368 looks on a black background.

Color Contrast Check

Large Text (above 18pt) WCAG AA ✓ Pass

Any Text WCAG AA ✓ Pass

Large Text (above 18pt) WCAG AAA ✓ Pass

Any Text WCAG AAA ✓ Pass

If you want to check with other color combinations, try the [Color Contrast Checker](#).

Yxy 40.1712, 0.3608, 0.3368

Background



This preview shows how black text looks on a background with the Yxy color 40.1712, 0.3608, 0.3368.



This preview shows how white text looks on a background with the Yxy color 40.1712, 0.3608, 0.3368.

Color Blindness Simulation

Color vision deficiency is a very complex topic, and I could not describe the different causes any better than Wikipedia does, so if you want to learn more, you should check out their [article about color blindness](#).

Dichromacy



Original Color

40.1712, 0.3608, 0.3368

Protanopia

40.4828, 0.3277, 0.3442

Deuteranopia

40.1883, 0.3508, 0.3437



Tritanopia

40.3351, 0.3477, 0.3140

Trichromacy



Original Color

40.1712, 0.3608, 0.3368

Protanomaly

40.1459, 0.3397, 0.3412

Deuteranomaly

40.3646, 0.3550, 0.3422

Tritanomaly

40.3140, 0.3523, 0.3228

Monochromacy



Original Color

40.1712, 0.3608, 0.3368

Achromatopsia

41.2543, 0.3127, 0.3290

Achromatomaly

40.7892, 0.3293, 0.3331

CSS Examples

Text

The CSS property to change the color of the text to Yxy 40.1712, 0.3608, 0.3368 is called "color". The color property can be set on classes, ids or directly on the HTML element.

This example shows how text in the color `rgb(203, 160, 154)` looks like.

```
.text, #text, p{  
    color:rgb(203, 160, 154)  
}
```

If you want to add a text shadow in that color use the text-shadow property, you can generate a text shadow directly with our [CSS Text Shadow Generator](#).

Here you see how black text with a 4 pixel rgb(203, 160, 154) colored shadow looks like.

```
.shadow{ text-shadow: 4px 4px 2px rgb(203, 160, 154) }
```

Border

The CSS property to change the border of an element to Yxy 40.1712, 0.3608, 0.3368 is called "border". The border property can be set on classes, ids or directly on the HTML element.

This example shows the color as border, it can be applied via the CSS property "border" or "border-color".

```
.border, #border, table{ border:4px solid rgb(203, 160, 154) }
```

If only the border color should be changed use the property `border-color`.

```
.border{ border-color:rgb(203, 160, 154) }
```

If you want to add a box shadow in that color use:

Here you see how a box with a 4 pixel `rgb(203, 160, 154)` colored shadow looks like.

```
.boxshadow{ -moz-box-shadow:4px 4px 4px  
4px rgb(203, 160, 154); -webkit-box-  
shadow:4px 4px 4px 4px rgb(203, 160, 154);  
box-shadow:4px 4px 4px 4px rgb(203, 160,  
154) }
```


Background

The CSS property to change the background color of an element to Yxy 40.1712, 0.3608, 0.3368 is called "background". The background property can be set on classes, ids or directly on the HTML element.

```
.background, #background, body{  
background: rgb(203, 160, 154) }
```

If only the background color should be changed can be used:

```
.background{ background-color: rgb(203,  
160, 154) }
```

This example shows the color as background, it is applied via the CSS property "background".

To optimize and compress your CSS code, you can use our [online CSS compressor and optimizer](#) based on csstidy. If you want to create a linear or radial gradient as background or border, check our [CSS Gradient Generator](#).

Hey! You found this booklet interesting? Support Converting Colors with the new Membership Option!

The pro membership hides all ads, plus gives you double the colors in the color bucket, and more awesome pro features!

[Learn more, Memberships starting at \\$2.50/m!](#)

**Follow me
on Twitter!**

@ConvertingColor