

# Converting Colors

$Yxy(40.2084, 0.3383, 0.3299)$

Have a look what the booklet for  
Yxy(40.2084, 0.3383, 0.3299)  
contains.

<b>Yxy(40.1424, 0.3385, 0.3304)</b> .....	3
<b>Conversions</b> .....	4
<b>Details</b> .....	6
<b>Harmonies</b> .....	12
<b>Previews</b> .....	24
<b>Color Blindness Simulation</b> .....	27
<b>CSS Examples</b> .....	30

# Color

**Yxy(40.1424, 0.3385, 0.3304)**

# Conversions

## Conversions Part 1

Format	Color
Hex	BEA4A3
RGB	190, 164, 163
RGB Percent	75%, 64%, 64%
CMY	0.2548, 0.3569, 0.3608
CMYK	0.00, 0.14, 0.14, 0.25
HSL	2°, 17%, 69%
HSV	2°, 14%, 75%
XYZ	41.1265, 40.1424, 40.2274
YIQ	171.6600, 15.8170, 5.2010

# Conversions

## Conversions Part 2

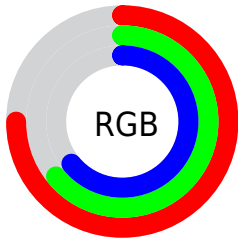
Format	Color
<a href="#">RYB</a>	<a href="#">190, 164, 163</a>
Decimal	<a href="#">12493987</a>
CIELab	<a href="#">69.57, 9.34, 4.03</a>
CIElCh	<a href="#">70, 10.170, 23.316</a>
Yxy	<a href="#">40.1424, 0.3385, 0.3304</a>
Android (android.graphics.Color)	<a href="#">4290684067 (0xFFBEA4A3)</a>
YUV	<a href="#">171.6600, -4.2694, 16.0842</a>
Hunter-Lab	<a href="#">63.3580, 4.9901, 6.7061</a>

# Details

The Yxy color  $40.1424, 0.3385, 0.3304$  is a light color, and the websafe version is hex `CC9999`. A complement of this color would be  $47.9129, 0.2913, 0.3276$ , and the grayscale version is  $41.0923, 0.3127, 0.3290$ .

A 20% lighter version of the original color is  $75.4991, 0.3338, 0.3301$ , and  $17.9703, 0.3465, 0.3309$  is the 20% darker color. If you saturate the color by 10%, you get  $33.4283, 0.3620, 0.3315$ , and if you desaturate by 10%, it is  $47.9049, 0.3196, 0.3294$ .

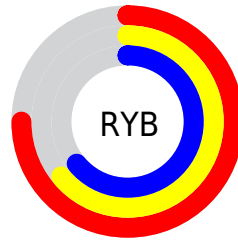
# Distribution



Red (75%)

Green (64%)

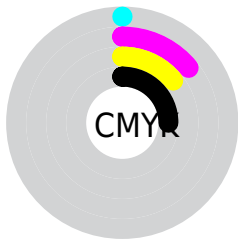
Blue (64%)



Red (75%)

Yellow (64%)

Blue (64%)

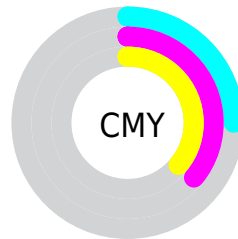


Cyan (0%)

Magenta (14%)

Yellow (14%)

Black (25%)



Cyan (25%)

Magenta (36%)

Yellow (36%)

# Brightness & Saturation Gradients

These gradients show how the Yxy color 40.1424, 0.3385, 0.3304 changes by changing the brightness by 10 percent. The first figure shows a shift by +10% for each color and the second figure -10%.


Similar to the brightness gradients but the following saturation gradients show a change of the Yxy color 40.1424, 0.3385, 0.3304 by changing the saturation by 10% instead.





 40.1424, 0.3385,  
0.3304


 40.1424, 0.3385,  
0.3304

346.7234, 0.3252,  
0.3298

 27.6496, 0.3419,  
0.3305


 75.3803, 0.3336,  
0.3302

 18.0617, 0.3465,  
0.3306


 98.8942, 0.3318,  
0.3301

 10.9943, 0.3526,  
0.3308


126.8506, 0.3302,  
0.3301

 6.0630, 0.3615,  
0.3309

159.6338, 0.3289,  
0.3300

 2.8834, 0.3754,  
0.3308

197.6283, 0.3278,  
0.3299

 1.0712, 0.4007,  
0.3303

241.2185, 0.3268,

 0.0000, 1.0000,

0.3299

0.0000

290.7887, 0.3260,  
0.3298

0.0000, 0.0000,  
0.0000

40.1424, 0.3385,  
0.3304

40.1424, 0.3385,  
0.3304

33.4283, 0.3620,  
0.3315

47.9049, 0.3196,  
0.3294

27.7126, 0.3910,  
0.3326

56.7522, 0.3043,  
0.3285

22.9491, 0.4263,  
0.3336

66.7259, 0.2920,  
0.3277

19.0863, 0.4677,  
0.3345

77.8635, 0.2820,  
0.3269

16.0674, 0.5135,  
0.3349

89.6911, 0.2752,  
0.3289

■ 13.8294, 0.5598,  
0.3348

■ 12.3003, 0.6000,  
0.3339

■ 11.3949, 0.6274,  
0.3323

■ 11.1038, 0.6375,  
0.3320

# Harmonies

## Analogous

The Analogous color harmony consists of three colors that are next to each other on the color wheel.



40.1424, 0.3276, 0.3179



40.1424, 0.3385, 0.3304



40.1424, 0.3423, 0.3429

# Triad

The Triadic color harmony groups three colors that are evenly spaced from another and form a triangle on the color wheel.



40.1424, 0.3385, 0.3304



40.1424, 0.3120, 0.3511



40.1424, 0.2879, 0.3059

# Complementary

The Complementary color scheme is a pair of colors which are on the opposite of each other on the color wheel.



40.1424, 0.3385, 0.3304



47.9129, 0.2913, 0.3276

# Split Complementary

Split-complementary colors differ from the complementary color scheme. The scheme consists of three colors, the original color and two neighbors of the complement color.



40.1424, 0.2840, 0.3141



40.1424, 0.3385, 0.3304



40.1424, 0.2977, 0.3404

# Square

The Square scheme is like the rectangle color scheme, but the four colors are evenly spaced on the color wheel.



40.1424, 0.3385, 0.3304



40.1424, 0.3268, 0.3553



40.1424, 0.2876, 0.3267



40.1424, 0.2984, 0.3039



# Rectangle

The Rectangle color scheme consists of four colors that form a rectangle on the color wheel.



40.1424, 0.3385, 0.3304



40.1424, 0.3403, 0.3496



40.1424, 0.2876, 0.3267



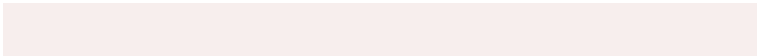
40.1424, 0.2858, 0.3080

# Sweetspot

The Sweet Spot groups the original color and five complimentary colors.



40.1442, 0.3385, 0.3304



87.0246, 0.3193, 0.3294



40.8230, 0.3151, 0.2955



18.8589, 0.3206, 0.3295



97.7402, 0.3127, 0.3290



20.4902, 0.3127, 0.3290



# Same Dimension

The Same Dimension uses a secret algorithm to generate beautiful new colors.



40.1442, 0.3385, 0.3304



68.8167, 0.3451, 0.3307



45.2030, 0.3360, 0.3479



9.5915, 0.3287, 0.3299



7.4063, 0.6368, 0.3325



0.3097, 0.6247, 0.3422

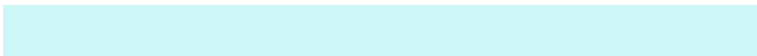


# Inverse Universe

The Inverse Universe completely reimagines the original color for something new.



47.9129, 0.2913, 0.3276



85.5448, 0.2869, 0.3273



42.4032, 0.2907, 0.3094



10.7473, 0.2985, 0.3281



25.0088, 0.2215, 0.3175

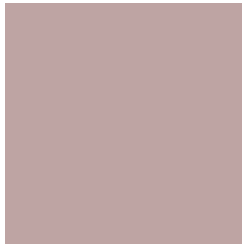


0.9986, 0.2223, 0.3204



# Previews

## White Background



This preview shows how the Yxy color 40.1424, 0.3385, 0.3304 looks on a white background.

## Color Contrast Check

Large Text (above 18pt) WCAG AA × Fail

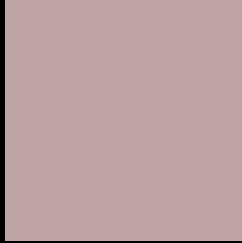
Any Text WCAG AA × Fail

Large Text (above 18pt) WCAG AAA × Fail

Any Text WCAG AAA × Fail



# Black Background



This preview shows how the Yxy color 40.1424, 0.3385, 0.3304 looks on a black background.

## Color Contrast Check

Large Text (above 18pt) WCAG AA ✓ Pass

Any Text WCAG AA ✓ Pass

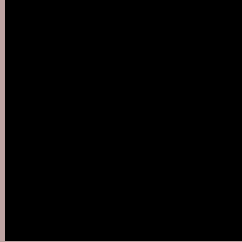
Large Text (above 18pt) WCAG AAA ✓ Pass

Any Text WCAG AAA ✓ Pass

If you want to check with other color combinations, try the [Color Contrast Checker](#).

**Yxy 40.1424, 0.3385, 0.3304**

## Background



This preview shows how black text looks on a background with the Yxy color 40.1424, 0.3385, 0.3304.



This preview shows how white text looks on a background with the Yxy color 40.1424, 0.3385, 0.3304.

# Color Blindness Simulation

Color vision deficiency is a very complex topic, and I could not describe the different causes any better than Wikipedia does, so if you want to learn more, you should check out their [article about color blindness](#).

## Dichromacy



### Original Color

40.1424, 0.3385, 0.3304

### Protanopia

40.1278, 0.3199, 0.3332

### Deuteranopia

40.0141, 0.3375, 0.3304



## Tritanopia

40.1423, 0.3297, 0.3121

# Trichromacy



## Original Color

40.1424, 0.3385, 0.3304

## Protanomaly

40.0573, 0.3266, 0.3318

## Deuteranomaly

40.0141, 0.3375, 0.3304

## Tritanomaly

40.2110, 0.3322, 0.3186

# Monochromacy



## Original Color

40.1424, 0.3385, 0.3304

## Achromatopsia

41.2543, 0.3127, 0.3290

## Achromatomaly

40.8242, 0.3219, 0.3290

# CSS Examples

## Text

The CSS property to change the color of the text to Yxy 40.1424, 0.3385, 0.3304 is called "color". The color property can be set on classes, ids or directly on the HTML element.

This example shows how text in the color `rgb(190, 164, 163)` looks like.

```
.text, #text, p{  
    color:rgb(190, 164, 163)  
}
```

If you want to add a text shadow in that color use the text-shadow property, you can generate a text shadow directly with our [CSS Text Shadow Generator](#).

Here you see how black text with a 4 pixel rgb(190, 164, 163) colored shadow looks like.

```
.shadow{ text-shadow: 4px 4px 2px rgb(190, 164, 163) }
```

## Border

The CSS property to change the border of an element to Yxy 40.1424, 0.3385, 0.3304 is called "border". The border property can be set on classes, ids or directly on the HTML element.

This example shows the color as border, it can be applied via the CSS property "border" or "border-color".

```
.border, #border, table{ border:4px solid rgb(190, 164, 163) }
```

If only the border color should be changed use the property `border-color`.

```
.border{ border-color:rgb(190, 164, 163) }
```

If you want to add a box shadow in that color use:

Here you see how a box with a 4 pixel `rgb(190, 164, 163)` colored shadow looks like.

```
.boxshadow{ -moz-box-shadow:4px 4px 4px 4px rgb(190, 164, 163); -webkit-box-shadow:4px 4px 4px 4px rgb(190, 164, 163); box-shadow:4px 4px 4px 4px rgb(190, 164, 163) }
```



# Background

The CSS property to change the background color of an element to Yxy 40.1424, 0.3385, 0.3304 is called "background". The background property can be set on classes, ids or directly on the HTML element.

```
.background, #background, body{  
background: rgb(190, 164, 163) }
```

If only the background color should be changed can be used:

```
.background{ background-color: rgb(190,  
164, 163) }
```

This example shows the color as background, it is applied via the CSS property "background".

To optimize and compress your CSS code, you can use our [online CSS compressor and optimizer](#) based on csstidy. If you want to create a linear or radial gradient as background or border, check our [CSS Gradient Generator](#).

Hey! You found this booklet interesting? Support Converting Colors with the new Membership Option!

The pro membership hides all ads, plus gives you double the colors in the color bucket, and more awesome pro features!

**[Learn more, Memberships starting at \\$2.50/m!](#)**

**Follow me  
on Twitter!**

@ConvertingColor