

Converting Colors

$Y_{xy}(40.2345, 0.3588, 0.3475)$

Have a look what the booklet for
Yxy(40.2345, 0.3588, 0.3475)
contains.

Yxy(40.2346, 0.3588, 0.3475)	3
Conversions	4
Details	6
Harmonies	12
Previews	24
Color Blindness Simulation	27
CSS Examples	30

Color

Yxy(40.2346, 0.3588, 0.3475)

Conversions

Conversions Part 1

Format	Color
Hex	C5A395
RGB	197, 163, 149
RGB Percent	77%, 64%, 58%
CMY	0.2275, 0.3607, 0.4157
CMYK	0.00, 0.17, 0.24, 0.23
HSL	18°, 29%, 68%
HSV	18°, 24%, 77%
XYZ	41.5429, 40.2346, 34.0055
YIQ	171.5700, 24.7580, 2.8540

Conversions

Conversions Part 2

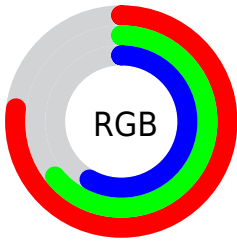
Format	Color
R _{YB}	197, 169, 149
Decimal	12952469
CIE Lab	69.64, 10.33, 11.96
CIE LCh	70, 15.800, 49.172
Yxy	40.2346, 0.3588, 0.3475
Android (android.graphics.Color)	4291142549 (0xFFC5A395)
YUV	171.5700, -11.1270, 22.3021
Hunter-Lab	63.4307, 5.9019, 12.6159

Details

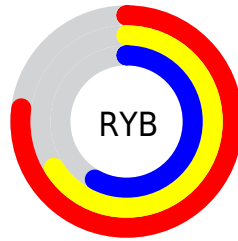
The Yxy color $40.2346, 0.3588, 0.3475$ is a light color, and the websafe version is hex `CC9999`. A complement of this color would be $44.2668, 0.2756, 0.3097$, and the grayscale version is $41.0740, 0.3127, 0.3290$.

A 20% lighter version of the original color is $75.5254, 0.3499, 0.3444$, and $18.0904, 0.3743, 0.3524$ is the 20% darker color. If you saturate the color by 10%, you get $34.9782, 0.3839, 0.3556$, and if you desaturate by 10%, it is $46.1469, 0.3375, 0.3396$.

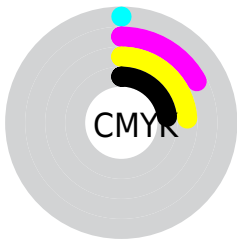
Distribution



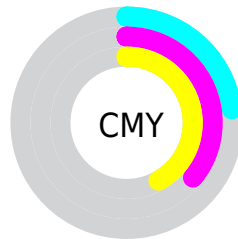
- Red (77%)
- Green (64%)
- Blue (58%)



- Red (77%)
- Yellow (66%)
- Blue (58%)



- Cyan (0%)
- Magenta (17%)
- Yellow (24%)
- Black (23%)





- Cyan (23%)
- Magenta (36%)
- Yellow (42%)

Brightness & Saturation Gradients


These gradients show how the Yxy color 40.2346, 0.3588, 0.3475 changes by changing the brightness by 10 percent. The first figure shows a shift by +10% for each color and the second figure -10%.


Similar to the brightness gradients but the following saturation gradients show a change of the Yxy color 40.2346, 0.3588, 0.3475 by changing the saturation by 10% instead.


 40.2346, 0.3588,
0.3475


 40.2346, 0.3588,
0.3475


347.1114, 0.3350,
0.3384

 27.7215, 0.3650,
0.3497


 75.5206, 0.3500,
0.3443

 18.1158, 0.3730,
0.3524


 99.0623, 0.3467,
0.3430

 11.0332, 0.3840,
0.3560


127.0491, 0.3440,
0.3420

 6.0892, 0.3997,
0.3607

159.8652, 0.3417,
0.3411

 2.8994, 0.4241,
0.3671

197.8950, 0.3397,
0.3403

 1.0794, 0.4884,
0.3930

241.5231, 0.3379,

 0.0000, 1.0000,

0.3396

0.0000

291.1338, 0.3364,
0.3390

0.0000, 0.0000,
0.0000

40.2346, 0.3588,
0.3475

40.2346, 0.3588,
0.3475

34.9782, 0.3839,
0.3556

46.1469, 0.3375,
0.3396

30.3491, 0.4130,
0.3634

52.7315, 0.3196,
0.3321

26.3249, 0.4461,
0.3702

60.0107, 0.3045,
0.3251

22.8795, 0.4823,
0.3751

68.0046, 0.2918,
0.3187

19.9849, 0.5196,
0.3770

76.7321, 0.2811,
0.3129

■ 17.6103, 0.5550,
0.3746

■ 85.4022, 0.2782,
0.3201

■ 15.7214, 0.5846,
0.3677

■ 90.6074, 0.2789,
0.3289

■ 14.8499, 0.5988,
0.3628

Harmonies

Analogous

The Analogous color harmony consists of three colors that are next to each other on the color wheel.



40.2346, 0.3511, 0.3280



40.2346, 0.3588, 0.3475



40.2346, 0.3535, 0.3631

Triad

The Triadic color harmony groups three colors that are evenly spaced from another and form a triangle on the color wheel.



40.2346, 0.3588, 0.3475



40.2346, 0.2922, 0.3496



40.2346, 0.2877, 0.2903

Complementary

The Complementary color scheme is a pair of colors which are on the opposite of each other on the color wheel.



40.2346, 0.3588, 0.3475



44.2668, 0.2756, 0.3097

Split Complementary

Split-complementary colors differ from the complementary color scheme. The scheme consists of three colors, the original color and two neighbors of the complement color.



40.2346, 0.2731, 0.2944



40.2346, 0.3588, 0.3475



40.2346, 0.2756, 0.3281

Square

The Square scheme is like the rectangle color scheme, but the four colors are evenly spaced on the color wheel.



40.2346, 0.3588, 0.3475



40.2346, 0.3146, 0.3654



40.2346, 0.2687, 0.3079



40.2346, 0.3095, 0.2959

Rectangle

The Rectangle color scheme consists of four colors that form a rectangle on the color wheel.



40.2346, 0.3588, 0.3475



40.2346, 0.3436, 0.3690



40.2346, 0.2687, 0.3079



40.2346, 0.2819, 0.2906

Sweetspot

The Sweet Spot groups the original color and five complimentary colors.



40.2364, 0.3588, 0.3475



91.1059, 0.3242, 0.3341



36.7939, 0.3283, 0.2852



19.3425, 0.3253, 0.3346



0.0000, 0.0000, 0.0000



21.4041, 0.3127, 0.3290

Same Dimension

The Same Dimension uses a secret algorithm to generate beautiful new colors.



40.2364, 0.3588, 0.3475



67.1504, 0.3710, 0.3516



49.4001, 0.3519, 0.3769



11.1336, 0.3282, 0.3358



9.8967, 0.5965, 0.3646



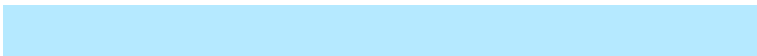
0.5962, 0.5544, 0.3980

Inverse Universe

The Inverse Universe completely reimagines the original color for something new.



44.2668, 0.2756, 0.3097



75.5478, 0.2680, 0.3051



35.3485, 0.2728, 0.2760



11.5237, 0.2984, 0.3221



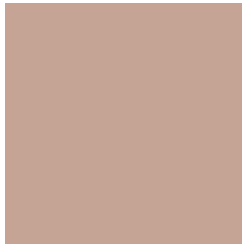
15.0286, 0.1978, 0.2319



0.8323, 0.2040, 0.2545

Previews

White Background



This preview shows how the Yxy color 40.2346, 0.3588, 0.3475 looks on a white background.

Color Contrast Check

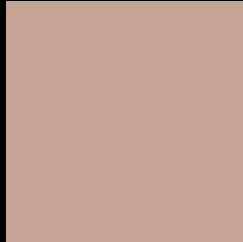
Large Text (above 18pt) WCAG AA × Fail

Any Text WCAG AA × Fail

Large Text (above 18pt) WCAG AAA × Fail

Any Text WCAG AAA × Fail

Black Background



This preview shows how the Yxy color 40.2346, 0.3588, 0.3475 looks on a black background.

Color Contrast Check

Large Text (above 18pt) WCAG AA ✓ Pass

Any Text WCAG AA ✓ Pass

Large Text (above 18pt) WCAG AAA ✓ Pass

Any Text WCAG AAA ✓ Pass

If you want to check with other color combinations, try the [Color Contrast Checker](#).

Yxy 40.2346, 0.3588, 0.3475

Background



This preview shows how black text looks on a background with the Yxy color 40.2346, 0.3588, 0.3475.



This preview shows how white text looks on a background with the Yxy color 40.2346, 0.3588, 0.3475.

Color Blindness Simulation

Color vision deficiency is a very complex topic, and I could not describe the different causes any better than Wikipedia does, so if you want to learn more, you should check out their [article about color blindness](#).

Dichromacy



Original Color

40.2346, 0.3588, 0.3475

Protanopia

40.4814, 0.3357, 0.3539

Deuteranopia

40.1902, 0.3555, 0.3490



Tritanopia

40.3995, 0.3405, 0.3138

Trichromacy



Original Color

40.2346, 0.3588, 0.3475

Protanomaly

40.1861, 0.3440, 0.3508

Deuteranomaly

40.3229, 0.3565, 0.3489

Tritanomaly

40.3122, 0.3469, 0.3252

Monochromacy



Original Color

40.2346, 0.3588, 0.3475

Achromatopsia

41.2543, 0.3127, 0.3290

Achromatomaly

40.8800, 0.3281, 0.3358

CSS Examples

Text

The CSS property to change the color of the text to Yxy 40.2346, 0.3588, 0.3475 is called "color". The color property can be set on classes, ids or directly on the HTML element.

This example shows how text in the color `rgb(197, 163, 149)` looks like.

```
.text, #text, p{  
    color:rgb(197, 163, 149)  
}
```

If you want to add a text shadow in that color use the text-shadow property, you can generate a text shadow directly with our [CSS Text Shadow Generator](#).

Here you see how black text with a 4 pixel rgb(197, 163, 149) colored shadow looks like.

```
.shadow{ text-shadow: 4px 4px 2px rgb(197, 163, 149) }
```

Border

The CSS property to change the border of an element to Yxy 40.2346, 0.3588, 0.3475 is called "border". The border property can be set on classes, ids or directly on the HTML element.

This example shows the color as border, it can be applied via the CSS property "border" or "border-color".

```
.border, #border, table{ border:4px solid rgb(197, 163, 149) }
```

If only the border color should be changed use the property border-color.

```
.border{ border-color:rgb(197, 163, 149) }
```

If you want to add a box shadow in that color use:

Here you see how a box with a 4 pixel rgb(197, 163, 149) colored shadow looks like.

```
.boxshadow{ -moz-box-shadow:4px 4px 4px  
4px rgb(197, 163, 149); -webkit-box-  
shadow:4px 4px 4px 4px rgb(197, 163, 149);  
box-shadow:4px 4px 4px 4px rgb(197, 163,  
149) }
```


Background

The CSS property to change the background color of an element to Yxy 40.2346, 0.3588, 0.3475 is called "background". The background property can be set on classes, ids or directly on the HTML element.

```
.background, #background, body{  
background: rgb(197, 163, 149) }
```

If only the background color should be changed can be used:

```
.background{ background-color: rgb(197,  
163, 149) }
```

This example shows the color as background, it is applied via the CSS property "background".

To optimize and compress your CSS code, you can use our [online CSS compressor and optimizer](#) based on csstidy. If you want to create a linear or radial gradient as background or border, check our [CSS Gradient Generator](#).

Hey! You found this booklet interesting? Support Converting Colors with the new Membership Option!

The pro membership hides all ads, plus gives you double the colors in the color bucket, and more awesome pro features!

[Learn more, Memberships starting at \\$2.50/m!](#)

**Follow me
on Twitter!**

@ConvertingColor