

# Converting Colors

$Yxy(40.2620, 0.3646, 0.3387)$

Have a look what the booklet for  
Yxy(40.2620, 0.3646, 0.3387)  
contains.

<b>Yxy(40.3877, 0.3648, 0.3393)</b> .....	3
<b><i>Conversions</i></b> .....	4
<b><i>Details</i></b> .....	6
<b><i>Harmonies</i></b> .....	12
<b><i>Previews</i></b> .....	24
<b><i>Color Blindness Simulation</i></b> .....	27
<b><i>CSS Examples</i></b> .....	30

# Color

**Yxy(40.3877, 0.3648, 0.3393)**

# Conversions

## Conversions Part 1

Format	Color
Hex	CDA098
RGB	205, 160, 152
RGB Percent	80%, 63%, 60%
CMY	0.1960, 0.3726, 0.4038
CMYK	0.00, 0.22, 0.26, 0.20
HSL	9°, 35%, 70%
HSV	9°, 26%, 80%
XYZ	43.4230, 40.3877, 35.2217
YIQ	172.5430, 29.3880, 7.0520

# Conversions

## Conversions Part 2

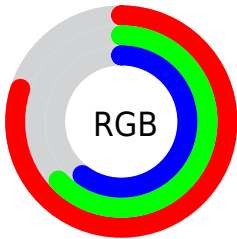
Format	Color
R <sub>Y</sub> B	205, 161, 152
Decimal	13475992
CIE Lab	69.74, 15.50, 10.54
CIE LCh	70, 18.748, 34.221
Yxy	40.3877, 0.3648, 0.3393
Android (android.graphics.Color)	4291666072 (0xFFCDA098)
YUV	172.5430, -10.1277, 28.4648
Hunter-Lab	63.5513, 10.7498, 11.6260

# Details

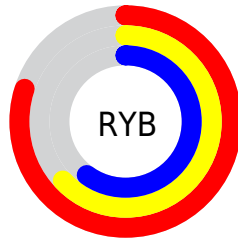
The Yxy color  $40.3877, 0.3648, 0.3393$  is a light color, and the websafe version is hex `CC9999`. A complement of this color would be  $51.0486, 0.2742, 0.3184$ , and the grayscale version is  $41.5883, 0.3127, 0.3290$ .

A 20% lighter version of the original color is  $74.3171, 0.3490, 0.3383$ , and  $18.1487, 0.3815, 0.3412$  is the 20% darker color. If you saturate the color by 10%, you get  $34.1521, 0.3930, 0.3435$ , and if you desaturate by 10%, it is  $47.5896, 0.3415, 0.3351$ .

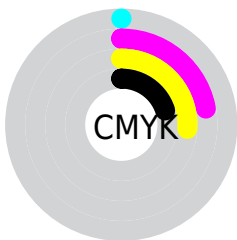
# Distribution



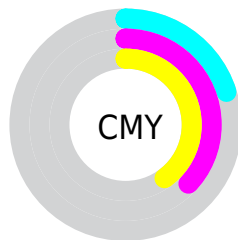
- Red (80%)
- Green (63%)
- Blue (60%)



- Red (80%)
- Yellow (63%)
- Blue (60%)



- Cyan (0%)
- Magenta (22%)
- Yellow (26%)
- Black (20%)




- Cyan (20%)
- Magenta (37%)
- Yellow (40%)


# Brightness & Saturation Gradients

These gradients show how the Yxy color 40.3877, 0.3648, 0.3393 changes by changing the brightness by 10 percent. The first figure shows a shift by +10% for each color and the second figure -10%.


Similar to the brightness gradients but the following saturation gradients show a change of the Yxy color 40.3877, 0.3648, 0.3393 by changing the saturation by 10% instead.





 40.3877, 0.3648,  
0.3393


 40.3877, 0.3648,  
0.3393

347.7550, 0.3379,  
0.3345

 27.8410, 0.3718,  
0.3403


 75.7535, 0.3548,  
0.3377

 18.2058, 0.3809,  
0.3416


 99.3414, 0.3511,  
0.3370

 11.0978, 0.3933,  
0.3431


127.3784, 0.3480,  
0.3365

 6.1327, 0.4112,  
0.3447

160.2490, 0.3454,  
0.3360

 2.9259, 0.4389,  
0.3463

198.3376, 0.3431,  
0.3356

 1.0932, 0.5012,  
0.3562

242.0285, 0.3412,

 0.0000, 1.0000,

0.3352

0.0000

291.7062, 0.3394,  
0.3349

0.0000, 0.0000,  
0.0000

40.3877, 0.3648,  
0.3393

40.3877, 0.3648,  
0.3393

34.1521, 0.3930,  
0.3435

47.5896, 0.3415,  
0.3351

28.8363, 0.4267,  
0.3475

55.7906, 0.3223,  
0.3312

24.3980, 0.4655,  
0.3507

65.0291, 0.3066,  
0.3275

20.7898, 0.5081,  
0.3524

75.3395, 0.2937,  
0.3242

17.9595, 0.5511,  
0.3519

86.7550, 0.2830,  
0.3211

■ 15.8489, 0.5895,  
0.3487

■ 91.7237, 0.2833,  
0.3289

■ 14.3911, 0.6177,  
0.3429

■ 13.9542, 0.6266,  
0.3406

# Harmonies

## Analogous

The Analogous color harmony consists of three colors that are next to each other on the color wheel.



40.3877, 0.3487, 0.3164



40.3877, 0.3648, 0.3393



40.3877, 0.3661, 0.3608

# Triad

The Triadic color harmony groups three colors that are evenly spaced from another and form a triangle on the color wheel.



40.3877, 0.3648, 0.3393



40.3877, 0.3010, 0.3644



40.3877, 0.2732, 0.2843

# Complementary

The Complementary color scheme is a pair of colors which are on the opposite of each other on the color wheel.



40.3877, 0.3648, 0.3393



51.0486, 0.2742, 0.3184

# Split Complementary

Split-complementary colors differ from the complementary color scheme. The scheme consists of three colors, the original color and two neighbors of the complement color.



40.3877, 0.2618, 0.2946



40.3877, 0.3648, 0.3393



40.3877, 0.2773, 0.3409

# Square

The Square scheme is like the rectangle color scheme, but the four colors are evenly spaced on the color wheel.



40.3877, 0.3648, 0.3393



40.3877, 0.3285, 0.3770



40.3877, 0.2633, 0.3150



40.3877, 0.2952, 0.2855



# Rectangle

The Rectangle color scheme consists of four colors that form a rectangle on the color wheel.



40.3877, 0.3648, 0.3393



40.3877, 0.3586, 0.3715



40.3877, 0.2633, 0.3150



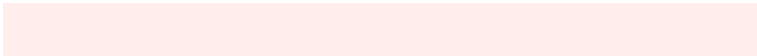
40.3877, 0.2681, 0.2864

# Sweetspot

The Sweet Spot groups the original color and five complimentary colors.



40.3896, 0.3648, 0.3393



88.1900, 0.3263, 0.3320



39.4823, 0.3229, 0.2741



18.4276, 0.3291, 0.3326



0.0000, 0.0000, 0.0000



21.4041, 0.3127, 0.3290



# Same Dimension

The Same Dimension uses a secret algorithm to generate beautiful new colors.



40.3896, 0.3648, 0.3393



60.2872, 0.3798, 0.3417



50.5713, 0.3567, 0.3718



11.4813, 0.3286, 0.3326



8.7716, 0.6248, 0.3421



0.5416, 0.5920, 0.3681



# Inverse Universe

The Inverse Universe completely reimagines the original color for something new.



51.0486, 0.2742, 0.3184



80.6162, 0.2665, 0.3159



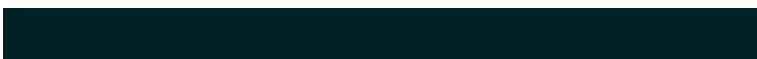
40.0526, 0.2709, 0.2821



12.4285, 0.2983, 0.3254



21.7456, 0.2114, 0.2810

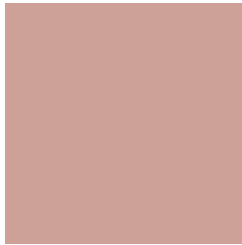


1.2018, 0.2142, 0.2913



# Previews

## White Background



This preview shows how the Yxy color 40.3877, 0.3648, 0.3393 looks on a white background.

## Color Contrast Check

Large Text (above 18pt) WCAG AA × Fail

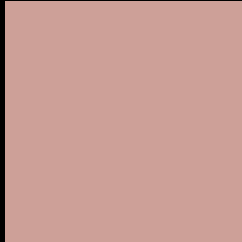
Any Text WCAG AA × Fail

Large Text (above 18pt) WCAG AAA × Fail

Any Text WCAG AAA × Fail



# Black Background



This preview shows how the Yxy color 40.3877, 0.3648, 0.3393 looks on a black background.

## Color Contrast Check

Large Text (above 18pt) WCAG AA ✓ Pass

Any Text WCAG AA ✓ Pass

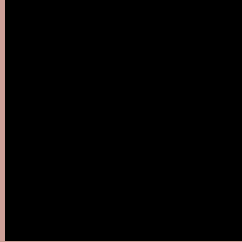
Large Text (above 18pt) WCAG AAA ✓ Pass

Any Text WCAG AAA ✓ Pass

If you want to check with other color combinations, try the [Color Contrast Checker](#).

**Yxy 40.3877, 0.3648, 0.3393**

## Background



This preview shows how black text looks on a background with the Yxy color 40.3877, 0.3648, 0.3393.



This preview shows how white text looks on a background with the Yxy color 40.3877, 0.3648, 0.3393.

# Color Blindness Simulation

Color vision deficiency is a very complex topic, and I could not describe the different causes any better than Wikipedia does, so if you want to learn more, you should check out their [article about color blindness](#).

## Dichromacy



### Original Color

40.3877, 0.3648, 0.3393

### Protanopia

40.5309, 0.3304, 0.3470

### Deuteranopia

40.2546, 0.3536, 0.3463



## Tritanopia

40.2439, 0.3508, 0.3141

# Trichromacy



**Original Color**

40.3877, 0.3648, 0.3393

**Protanomaly**

40.2038, 0.3425, 0.3439

**Deuteranomaly**

40.4345, 0.3579, 0.3448

**Tritanomaly**

40.2199, 0.3555, 0.3228

# Monochromacy



**Original Color**

40.3877, 0.3648, 0.3393

**Achromatopsia**

41.7885, 0.3127, 0.3290

**Achromatomaly**

41.0362, 0.3312, 0.3331

# CSS Examples

## Text

The CSS property to change the color of the text to Yxy 40.3877, 0.3648, 0.3393 is called "color". The color property can be set on classes, ids or directly on the HTML element.

This example shows how text in the color `rgb(205, 160, 152)` looks like.

```
.text, #text, p{  
    color:rgb(205, 160, 152)  
}
```

If you want to add a text shadow in that color use the text-shadow property, you can generate a text shadow directly with our [CSS Text Shadow Generator](#).

Here you see how black text with a 4 pixel rgb(205, 160, 152) colored shadow looks like.

```
.shadow{ text-shadow: 4px 4px 2px rgb(205, 160, 152) }
```

## Border

The CSS property to change the border of an element to Yxy 40.3877, 0.3648, 0.3393 is called "border". The border property can be set on classes, ids or directly on the HTML element.

This example shows the color as border, it can be applied via the CSS property "border" or "border-color".

```
.border, #border, table{ border:4px solid rgb(205, 160, 152) }
```

If only the border color should be changed use the property `border-color`.

```
.border{ border-color:rgb(205, 160, 152) }
```

If you want to add a box shadow in that color use:

Here you see how a box with a 4 pixel `rgb(205, 160, 152)` colored shadow looks like.

```
.boxshadow{ -moz-box-shadow:4px 4px 4px  
4px rgb(205, 160, 152); -webkit-box-  
shadow:4px 4px 4px 4px rgb(205, 160, 152);  
box-shadow:4px 4px 4px 4px rgb(205, 160,  
152) }
```



# Background

The CSS property to change the background color of an element to Yxy 40.3877, 0.3648, 0.3393 is called "background". The background property can be set on classes, ids or directly on the HTML element.

```
.background, #background, body{  
background: rgb(205, 160, 152) }
```

If only the background color should be changed can be used:

```
.background{ background-color: rgb(205,  
160, 152) }
```

This example shows the color as background, it is applied via the CSS property "background".

To optimize and compress your CSS code, you can use our [online CSS compressor and optimizer](#) based on csstidy. If you want to create a linear or radial gradient as background or border, check our [CSS Gradient Generator](#).

Hey! You found this booklet interesting? Support Converting Colors with the new Membership Option!

The pro membership hides all ads, plus gives you double the colors in the color bucket, and more awesome pro features!

**[Learn more, Memberships starting at \\$2.50/m!](#)**

**Follow me  
on Twitter!**

@ConvertingColor