

Converting Colors

$Y_{xy}(40.3424, 0.3452, 0.3290)$

Have a look what the booklet for
Yxy(40.3424, 0.3452, 0.3290)
contains.

Yxy(40.1851, 0.3457, 0.3291)	3
<i>Conversions</i>	4
<i>Details</i>	6
<i>Harmonies</i>	12
<i>Previews</i>	24
<i>Color Blindness Simulation</i>	27
<i>CSS Examples</i>	30

Color

Yxy(40.1851, 0.3457, 0.3291)

Conversions

Conversions Part 1

Format	Color
Hex	C4A2A2
RGB	196, 162, 162
RGB Percent	77%, 64%, 64%
CMY	0.2312, 0.3647, 0.3647
CMYK	0.00, 0.17, 0.17, 0.23
HSL	0°, 22%, 70%
HSV	0°, 17%, 77%
XYZ	42.2121, 40.1851, 39.7089
YIQ	172.1660, 20.2640, 7.2080

Conversions

Conversions Part 2

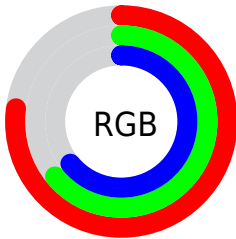
Format	Color
R _Y B	196, 162, 162
Decimal	12886690
CIE Lab	69.60, 12.51, 4.70
CIE LCh	70, 13.360, 20.583
Yxy	40.1851, 0.3457, 0.3291
Android (android.graphics.Color)	4291076770 (0xFFC4A2A2)
YUV	172.1660, -5.0118, 20.9024
Hunter-Lab	63.3917, 7.9263, 7.2347

Details

The Yxy color $40.1851, 0.3457, 0.3291$ is a light color, and the websafe version is hex `CC9999`. A complement of this color would be $51.1594, 0.2868, 0.3289$, and the grayscale version is $41.3634, 0.3127, 0.3290$.

A 20% lighter version of the original color is $75.5181, 0.3392, 0.3291$, and $18.0284, 0.3568, 0.3291$ is the 20% darker color. If you saturate the color by 10%, you get $33.1680, 0.3713, 0.3292$, and if you desaturate by 10%, it is $48.3908, 0.3252, 0.3290$.

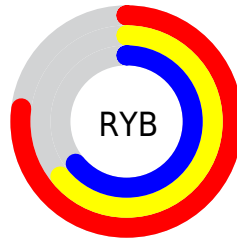
Distribution



Red (77%)

Green (64%)

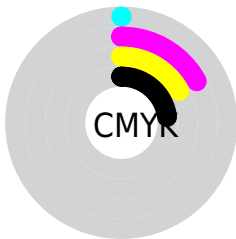
Blue (64%)



Red (77%)

Yellow (64%)

Blue (64%)

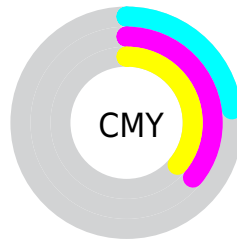


Cyan (0%)

Magenta (17%)

Yellow (17%)

Black (23%)



Cyan (23%)


Magenta (36%)


Yellow (36%)

Brightness & Saturation Gradients


These gradients show how the Yxy color 40.1851, 0.3457, 0.3291 changes by changing the brightness by 10 percent. The first figure shows a shift by +10% for each color and the second figure -10%.


Similar to the brightness gradients but the following saturation gradients show a change of the Yxy color 40.1851, 0.3457, 0.3291 by changing the saturation by 10% instead.

 40.1851, 0.3457,
0.3291

 40.1851, 0.3457,
0.3291


346.9031, 0.3287,
0.3292

 27.6829, 0.3501,
0.3290


 75.4453, 0.3394,
0.3292

 18.0868, 0.3559,
0.3288


 98.9721, 0.3371,
0.3292

 11.0123, 0.3638,
0.3285


126.9425, 0.3351,
0.3292

 6.0751, 0.3751,
0.3280

159.7410, 0.3335,
0.3292

 2.8908, 0.3929,
0.3268

197.7519, 0.3320,
0.3292

 1.0750, 0.4255,
0.3244

241.3596, 0.3308,

 0.0000, 1.0000,

0.3292

0.0000

290.9485, 0.3297,
0.3292

0.0000, 0.0000,
0.0000

40.1851, 0.3457,
0.3291

40.1851, 0.3457,
0.3291

33.1680, 0.3713,
0.3292

48.3908, 0.3252,
0.3290

27.2792, 0.4031,
0.3293

57.8308, 0.3087,
0.3290

22.4617, 0.4414,
0.3294

68.5552, 0.2956,
0.3289

18.6509, 0.4858,
0.3295

80.6094, 0.2850,
0.3289

15.7756, 0.5335,
0.3297

90.4800, 0.2784,
0.3289

■ 13.7552, 0.5790,
0.3298

■ 12.4955, 0.6149,
0.3299

■ 11.8639, 0.6357,
0.3300

■ 11.7405, 0.6401,
0.3300

Harmonies

Analogous

The Analogous color harmony consists of three colors that are next to each other on the color wheel.



40.1851, 0.3306, 0.3131



40.1851, 0.3457, 0.3291



40.1851, 0.3517, 0.3456

Triad

The Triadic color harmony groups three colors that are evenly spaced from another and form a triangle on the color wheel.



40.1851, 0.3457, 0.3291



40.1851, 0.3135, 0.3591



40.1851, 0.2795, 0.2993

Complementary

The Complementary color scheme is a pair of colors which are on the opposite of each other on the color wheel.



40.1851, 0.3457, 0.3291



51.1594, 0.2868, 0.3289

Split Complementary

Split-complementary colors differ from the complementary color scheme. The scheme consists of three colors, the original color and two neighbors of the complement color.



40.1851, 0.2753, 0.3106



40.1851, 0.3457, 0.3291



40.1851, 0.2945, 0.3456

Square

The Square scheme is like the rectangle color scheme, but the four colors are evenly spaced on the color wheel.



40.1851, 0.3457, 0.3291



40.1851, 0.3327, 0.3637



40.1851, 0.2807, 0.3275



40.1851, 0.2923, 0.2961

Rectangle

The Rectangle color scheme consists of four colors that form a rectangle on the color wheel.



40.1851, 0.3457, 0.3291



40.1851, 0.3496, 0.3548



40.1851, 0.2807, 0.3275



40.1851, 0.2770, 0.3022

Sweetspot

The Sweet Spot groups the original color and five complimentary colors.



40.1869, 0.3457, 0.3291



91.3400, 0.3211, 0.3290



41.5641, 0.3147, 0.2865



19.3001, 0.3223, 0.3290



0.0000, 0.0000, 0.0000



21.4041, 0.3127, 0.3290

Same Dimension

The Same Dimension uses a secret algorithm to generate beautiful new colors.



40.1869, 0.3457, 0.3291



67.4848, 0.3552, 0.3291



46.5928, 0.3420, 0.3509



10.0781, 0.3289, 0.3291



7.5412, 0.6401, 0.3300



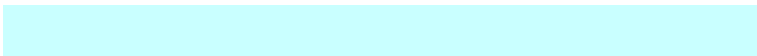
0.3259, 0.6400, 0.3300

Inverse Universe

The Inverse Universe completely reimagines the original color for something new.



51.1594, 0.2868, 0.3289



91.2156, 0.2813, 0.3289



43.9118, 0.2857, 0.3061



11.4283, 0.2985, 0.3290



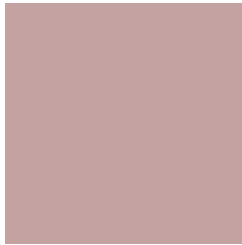
27.9214, 0.2246, 0.3287



1.2065, 0.2246, 0.3287

Previews

White Background



This preview shows how the Yxy color 40.1851, 0.3457, 0.3291 looks on a white background.

Color Contrast Check

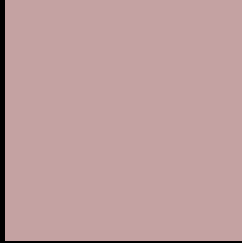
Large Text (above 18pt) WCAG AA × Fail

Any Text WCAG AA × Fail

Large Text (above 18pt) WCAG AAA × Fail

Any Text WCAG AAA × Fail

Black Background



This preview shows how the Yxy color 40.1851, 0.3457, 0.3291 looks on a black background.

Color Contrast Check

Large Text (above 18pt) WCAG AA ✓ Pass

Any Text WCAG AA ✓ Pass

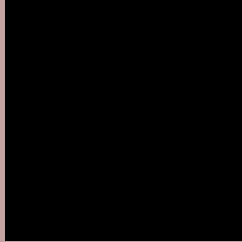
Large Text (above 18pt) WCAG AAA ✓ Pass

Any Text WCAG AAA ✓ Pass

If you want to check with other color combinations, try the [Color Contrast Checker](#).

Yxy 40.1851, 0.3457, 0.3291

Background



This preview shows how black text looks on a background with the Yxy color 40.1851, 0.3457, 0.3291.



This preview shows how white text looks on a background with the Yxy color 40.1851, 0.3457, 0.3291.

Color Blindness Simulation

Color vision deficiency is a very complex topic, and I could not describe the different causes any better than Wikipedia does, so if you want to learn more, you should check out their [article about color blindness](#).

Dichromacy



Original Color

40.1851, 0.3457, 0.3291

Protanopia

40.1278, 0.3199, 0.3332

Deuteranopia

40.1067, 0.3394, 0.3317



Tritanopia

40.0291, 0.3366, 0.3123

Trichromacy



Original Color

40.1851, 0.3457, 0.3291

Protanomaly

39.9341, 0.3286, 0.3304

Deuteranomaly

40.0095, 0.3415, 0.3304

Tritanomaly

40.2246, 0.3402, 0.3188

Monochromacy



Original Color

40.1851, 0.3457, 0.3291

Achromatopsia

41.2543, 0.3127, 0.3290

Achromatomaly

40.6562, 0.3248, 0.3290

CSS Examples

Text

The CSS property to change the color of the text to Yxy 40.1851, 0.3457, 0.3291 is called "color". The color property can be set on classes, ids or directly on the HTML element.

This example shows how text in the color `rgb(196, 162, 162)` looks like.

```
.text, #text, p{  
    color:rgb(196, 162, 162)  
}
```

If you want to add a text shadow in that color use the text-shadow property, you can generate a text shadow directly with our [CSS Text Shadow Generator](#).

Here you see how black text with a 4 pixel rgb(196, 162, 162) colored shadow looks like.

```
.shadow{ text-shadow: 4px 4px 2px rgb(196, 162, 162) }
```

Border

The CSS property to change the border of an element to Yxy 40.1851, 0.3457, 0.3291 is called "border". The border property can be set on classes, ids or directly on the HTML element.

This example shows the color as border, it can be applied via the CSS property "border" or "border-color".

```
.border, #border, table{ border:4px solid rgb(196, 162, 162) }
```

If only the border color should be changed use the property `border-color`.

```
.border{ border-color:rgb(196, 162, 162) }
```

If you want to add a box shadow in that color use:

Here you see how a box with a 4 pixel `rgb(196, 162, 162)` colored shadow looks like.

```
.boxshadow{ -moz-box-shadow:4px 4px 4px  
4px rgb(196, 162, 162); -webkit-box-  
shadow:4px 4px 4px 4px rgb(196, 162, 162);  
box-shadow:4px 4px 4px 4px rgb(196, 162,  
162) }
```


Background

The CSS property to change the background color of an element to Yxy 40.1851, 0.3457, 0.3291 is called "background". The background property can be set on classes, ids or directly on the HTML element.

```
.background, #background, body{  
background: rgb(196, 162, 162) }
```

If only the background color should be changed can be used:

```
.background{ background-color: rgb(196,  
162, 162) }
```

This example shows the color as background, it is applied via the CSS property "background".

To optimize and compress your CSS code, you can use our [online CSS compressor and optimizer](#) based on csstidy. If you want to create a linear or radial gradient as background or border, check our [CSS Gradient Generator](#).

Hey! You found this booklet interesting? Support Converting Colors with the new Membership Option!

The pro membership hides all ads, plus gives you double the colors in the color bucket, and more awesome pro features!

[Learn more, Memberships starting at \\$2.50/m!](#)

**Follow me
on Twitter!**

@ConvertingColor