

Converting Colors

$Yxy(40.3733, 0.3562, 0.3628)$

Have a look what the booklet for
Yxy(40.3733, 0.3562, 0.3628)
contains.

Yxy(40.4092, 0.3563, 0.3628)	3
<i>Conversions</i>	4
<i>Details</i>	6
<i>Harmonies</i>	12
<i>Previews</i>	24
<i>Color Blindness Simulation</i>	27
<i>CSS Examples</i>	30

Color

Yxy(40.4092, 0.3563, 0.3628)

Conversions

Conversions Part 1

Format	Color
Hex	BDA78E
RGB	189, 167, 142
RGB Percent	74%, 65%, 56%
CMY	0.2588, 0.3451, 0.4433
CMYK	0.00, 0.12, 0.25, 0.26
HSL	32°, 26%, 65%
HSV	32°, 25%, 74%
XYZ	39.6852, 40.4092, 31.2871
YIQ	170.7280, 21.1370, -3.1110

Conversions

Conversions Part 2

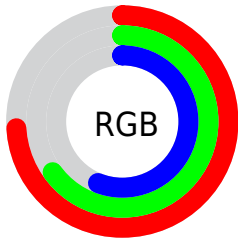
Format	Color
R_{YB}	183, 189, 142
Decimal	12429198
CIE _{Lab}	69.76, 4.05, 15.89
CIE _{LCh}	70, 16.394, 75.684
Yxy	40.4092, 0.3563, 0.3628
Android (android.graphics.Color)	4290619278 (0xFFBDA78E)
YUV	170.7280, -14.1629, 16.0245
Hunter-Lab	63.5682, 0.1919, 15.3164

Details

The Yxy color **40.4092, 0.3563, 0.3628** is a light color, and the websafe version is hex **CC9999**. A complement of this color would be **35.9591, 0.2735, 0.2926**, and the grayscale version is **40.6453, 0.3127, 0.3290**.

A 20% lighter version of the original color is **75.8209, 0.3481, 0.3562**, and **18.1851, 0.3690, 0.3717** is the 20% darker color. If you saturate the color by 10%, you get **36.7623, 0.3777, 0.3770**, and if you desaturate by 10%, it is **44.3774, 0.3372, 0.3488**.

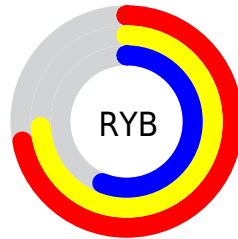
Distribution



Red (74%)

Green (65%)

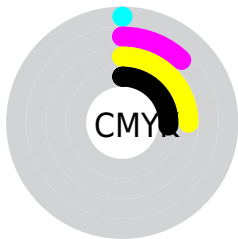
Blue (56%)



Red (72%)

Yellow (74%)

Blue (56%)

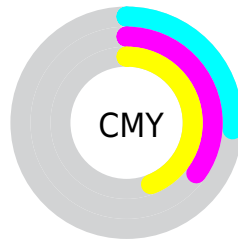


Cyan (0%)

Magenta (12%)

Yellow (25%)

Black (26%)



Cyan (26%)


Magenta (35%)


Yellow (44%)

Brightness & Saturation Gradients

These gradients show how the Yxy color 40.4092, 0.3563, 0.3628 changes by changing the brightness by 10 percent. The first figure shows a shift by +10% for each color and the second figure -10%.


Similar to the brightness gradients but the following saturation gradients show a change of the Yxy color 40.4092, 0.3563, 0.3628 by changing the saturation by 10% instead.


 40.4092, 0.3563,
0.3628


 40.4092, 0.3563,
0.3628


347.8453, 0.3339,
0.3458

 27.8577, 0.3620,
0.3671

 75.7862, 0.3480,
0.3566

 18.2184, 0.3695,
0.3726


 99.3806, 0.3450,
0.3543

 11.1069, 0.3796,
0.3798


 127.4247, 0.3424,
0.3523

 6.1388, 0.3939,
0.3899

160.3029, 0.3402,
0.3506

 2.9297, 0.4155,
0.4044

198.3997, 0.3383,
0.3491

 1.0951, 0.4996,
0.4720

242.0994, 0.3367,

 0.0000, 1.0000,

0.3479

0.0000

291.7865, 0.3352,
0.3468

0.0000, 0.0000,
0.0000

40.4092, 0.3563,
0.3628

40.4092, 0.3563,
0.3628

36.7623, 0.3777,
0.3770

44.3774, 0.3372,
0.3488

33.4219, 0.4011,
0.3909

48.6700, 0.3202,
0.3353

30.3800, 0.4262,
0.4035

53.2974, 0.3053,
0.3226

27.6261, 0.4521,
0.4138

58.2675, 0.2923,
0.3108

25.1489, 0.4777,
0.4205

63.5881, 0.2809,
0.3000

■ 22.9358, 0.5014,
0.4225

■ 69.2427, 0.2711,
0.2904

■ 20.9724, 0.5218,
0.4192

■ 74.0061, 0.2720,
0.3004

■ 20.0527, 0.5314,
0.4162

■ 79.0183, 0.2729,
0.3102

■ 84.2832, 0.2738,
0.3198

Harmonies

Analogous

The Analogous color harmony consists of three colors that are next to each other on the color wheel.



40.4092, 0.3602, 0.3459



40.4092, 0.3563, 0.3628



40.4092, 0.3404, 0.3714

Triad

The Triadic color harmony groups three colors that are evenly spaced from another and form a triangle on the color wheel.



40.4092, 0.3563, 0.3628



40.4092, 0.2758, 0.3307



40.4092, 0.3065, 0.2936

Complementary

The Complementary color scheme is a pair of colors which are on the opposite of each other on the color wheel.



40.4092, 0.3563, 0.3628



35.9591, 0.2735, 0.2926

Split Complementary

Split-complementary colors differ from the complementary color scheme. The scheme consists of three colors, the original color and two neighbors of the complement color.



40.4092, 0.2846, 0.2889



40.4092, 0.3563, 0.3628



40.4092, 0.2674, 0.3092

Square

The Square scheme is like the rectangle color scheme, but the four colors are evenly spaced on the color wheel.



40.4092, 0.3563, 0.3628



40.4092, 0.2939, 0.3528



40.4092, 0.2706, 0.2943



40.4092, 0.3309, 0.3068

Rectangle

The Rectangle color scheme consists of four colors that form a rectangle on the color wheel.



40.4092, 0.3563, 0.3628



40.4092, 0.3255, 0.3705



40.4092, 0.2706, 0.2943



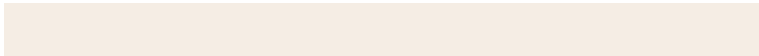
40.4092, 0.2986, 0.2910

Sweetspot

The Sweet Spot groups the original color and five complimentary colors.



40.4110, 0.3563, 0.3628



85.4045, 0.3238, 0.3382



32.8615, 0.3398, 0.2985



18.2651, 0.3248, 0.3390



95.5105, 0.3127, 0.3290



19.5994, 0.3127, 0.3290

Same Dimension

The Same Dimension uses a secret algorithm to generate beautiful new colors.



40.4110, 0.3563, 0.3628



68.6508, 0.3680, 0.3708



49.0653, 0.3491, 0.3904



10.3547, 0.3275, 0.3412



13.6466, 0.5296, 0.4177



0.6644, 0.4964, 0.4441

Inverse Universe

The Inverse Universe completely reimagines the original color for something new.



35.9591, 0.2735, 0.2926



59.2775, 0.2643, 0.2831



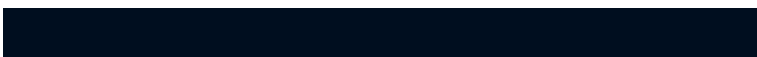
28.8289, 0.2713, 0.2595



9.9410, 0.2984, 0.3165



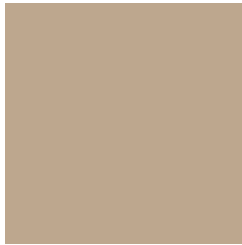
7.3600, 0.1748, 0.1492



0.4193, 0.1875, 0.1949

Previews

White Background



This preview shows how the Yxy color 40.4092, 0.3563, 0.3628 looks on a white background.

Color Contrast Check

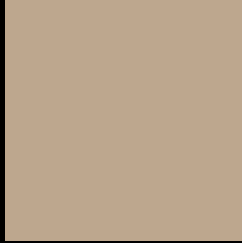
Large Text (above 18pt) WCAG AA × Fail

Any Text WCAG AA × Fail

Large Text (above 18pt) WCAG AAA × Fail

Any Text WCAG AAA × Fail

Black Background



This preview shows how the Yxy color 40.4092, 0.3563, 0.3628 looks on a black background.

Color Contrast Check

Large Text (above 18pt) WCAG AA ✓ Pass

Any Text WCAG AA ✓ Pass

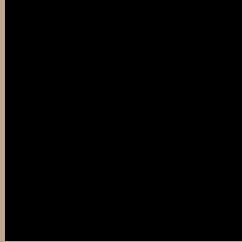
Large Text (above 18pt) WCAG AAA ✓ Pass

Any Text WCAG AAA ✓ Pass

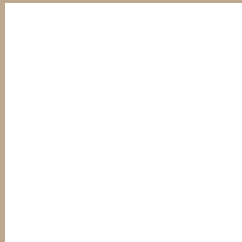
If you want to check with other color combinations, try the [Color Contrast Checker](#).

Yxy 40.4092, 0.3563, 0.3628

Background



This preview shows how black text looks on a background with the Yxy color 40.4092, 0.3563, 0.3628.



This preview shows how white text looks on a background with the Yxy color 40.4092, 0.3563, 0.3628.

Color Blindness Simulation

Color vision deficiency is a very complex topic, and I could not describe the different causes any better than Wikipedia does, so if you want to learn more, you should check out their [article about color blindness](#).

Dichromacy



Original Color

40.4092, 0.3563, 0.3628

Protanopia

40.4359, 0.3457, 0.3664

Deuteranopia

40.4044, 0.3642, 0.3567



Tritanopia

40.2733, 0.3306, 0.3122

Trichromacy



Original Color

40.4092, 0.3563, 0.3628

Protanomaly

40.4264, 0.3489, 0.3647

Deuteranomaly

40.3628, 0.3609, 0.3583

Tritanomaly

40.4017, 0.3404, 0.3304

Monochromacy



Original Color

40.4092, 0.3563, 0.3628

Achromatopsia

40.7240, 0.3127, 0.3290

Achromatomaly

40.7525, 0.3287, 0.3428

CSS Examples

Text

The CSS property to change the color of the text to Yxy 40.4092, 0.3563, 0.3628 is called "color". The color property can be set on classes, ids or directly on the HTML element.

This example shows how text in the color `rgb(189, 167, 142)` looks like.

```
.text, #text, p{  
    color:rgb(189, 167, 142)  
}
```

If you want to add a text shadow in that color use the text-shadow property, you can generate a text shadow directly with our [CSS Text Shadow Generator](#).

Here you see how black text with a 4 pixel rgb(189, 167, 142) colored shadow looks like.

```
.shadow{ text-shadow: 4px 4px 2px rgb(189, 167, 142) }
```

Border

The CSS property to change the border of an element to Yxy 40.4092, 0.3563, 0.3628 is called "border". The border property can be set on classes, ids or directly on the HTML element.

This example shows the color as border, it can be applied via the CSS property "border" or "border-color".

```
.border, #border, table{ border:4px solid rgb(189, 167, 142) }
```

If only the border color should be changed use the property `border-color`.

```
.border{ border-color:rgb(189, 167, 142) }
```

If you want to add a box shadow in that color use:

Here you see how a box with a 4 pixel `rgb(189, 167, 142)` colored shadow looks like.

```
.boxshadow{ -moz-box-shadow:4px 4px 4px  
4px rgb(189, 167, 142); -webkit-box-  
shadow:4px 4px 4px 4px rgb(189, 167, 142);  
box-shadow:4px 4px 4px 4px rgb(189, 167,  
142) }
```


Background

The CSS property to change the background color of an element to Yxy 40.4092, 0.3563, 0.3628 is called "background". The background property can be set on classes, ids or directly on the HTML element.

```
.background, #background, body{  
background: rgb(189, 167, 142) }
```

If only the background color should be changed can be used:

```
.background{ background-color: rgb(189,  
167, 142) }
```

This example shows the color as background, it is applied via the CSS property "background".

To optimize and compress your CSS code, you can use our [online CSS compressor and optimizer](#) based on csstidy. If you want to create a linear or radial gradient as background or border, check our [CSS Gradient Generator](#).

Hey! You found this booklet interesting? Support Converting Colors with the new Membership Option!

The pro membership hides all ads, plus gives you double the colors in the color bucket, and more awesome pro features!

[Learn more, Memberships starting at \\$2.50/m!](#)

**Follow me
on Twitter!**

@ConvertingColor