

Converting Colors

$Y_{xy}(40.5170, 0.3559, 0.3291)$

Have a look what the booklet for
Yxy(40.5170, 0.3559, 0.3291)
contains.

Yxy(40.5170, 0.3559, 0.3291)	3
Conversions	4
Details	6
Harmonies	12
Previews	24
Color Blindness Simulation	27
CSS Examples	30

Color

Yxy(40.5170, 0.3559, 0.3291)

Conversions

Conversions Part 1

Format	Color
Hex	CCA0A0
RGB	204, 160, 160
RGB Percent	80%, 63%, 63%
CMY	0.2001, 0.3725, 0.3724
CMYK	0.00, 0.22, 0.22, 0.20
HSL	360°, 30%, 71%
HSV	360°, 22%, 80%
XYZ	43.8165, 40.5170, 38.7811
YIQ	173.1560, 26.2240, 9.3280

Conversions

Conversions Part 2

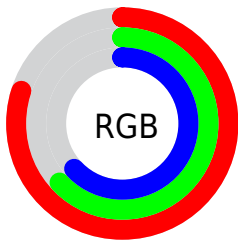
Format	Color
R_{YB}	204, 160, 160
Decimal	13410464
CIE Lab	69.84, 16.27, 6.22
CIE LCh	70, 17.417, 20.936
Yxy	40.5170, 0.3559, 0.3291
Android (android.graphics.Color)	4291600544 (0xFFCCA0A0)
YUV	173.1560, -6.4859, 27.0502
Hunter-Lab	63.6530, 11.4805, 8.4342

Details

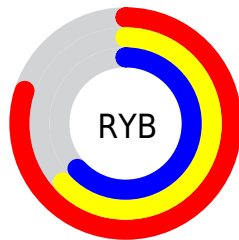
The Yxy color $40.5170, 0.3559, 0.3291$ is a light color, and the websafe version is hex $CC9999$. A complement of this color would be $55.0110, 0.2809, 0.3289$, and the grayscale version is $41.8978, 0.3127, 0.3290$.

A 20% lighter version of the original color is $74.7672, 0.3425, 0.3291$, and $18.2188, 0.3688, 0.3274$ is the 20% darker color. If you saturate the color by 10%, you get $33.3604, 0.3841, 0.3292$, and if you desaturate by 10%, it is $48.9547, 0.3333, 0.3290$.

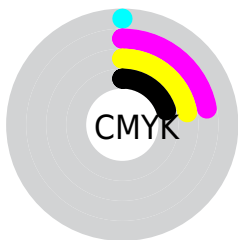
Distribution



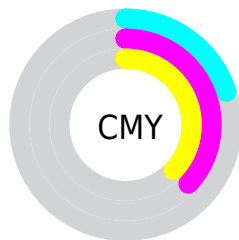
- Red (80%)
- Green (63%)
- Blue (63%)



- Red (80%)
- Yellow (63%)
- Blue (63%)



- Cyan (0%)
- Magenta (22%)
- Yellow (22%)
- Black (20%)





- Cyan (20%)
- Magenta (37%)
- Yellow (37%)

Brightness & Saturation Gradients


These gradients show how the Yxy color 40.5170, 0.3559, 0.3291 changes by changing the brightness by 10 percent. The first figure shows a shift by +10% for each color and the second figure -10%.


Similar to the brightness gradients but the following saturation gradients show a change of the Yxy color 40.5170, 0.3559, 0.3291 by changing the saturation by 10% instead.


 40.5170, 0.3559,
0.3291


 40.5170, 0.3559,
0.3291


348.2979, 0.3336,
0.3294

 27.9419, 0.3617,
0.3289


 75.9501, 0.3477,
0.3293

 18.2818, 0.3692,
0.3286


 99.5769, 0.3446,
0.3293

 11.1525, 0.3795,
0.3281


127.6564, 0.3420,
0.3293

 6.1695, 0.3943,
0.3272

160.5730, 0.3399,
0.3294

 2.9484, 0.4174,
0.3252

198.7110, 0.3380,
0.3294

 1.1049, 0.4601,
0.3215

242.4549, 0.3364,

 0.0000, 1.0000,

0.3294

0.0000

292.1891, 0.3349,
0.3294

0.0000, 0.0000,
0.0000

40.5170, 0.3559,
0.3291

40.5170, 0.3559,
0.3291

33.3604, 0.3841,
0.3292

48.9547, 0.3333,
0.3290

27.4172, 0.4187,
0.3293

58.7259, 0.3152,
0.3290

22.6217, 0.4599,
0.3294

69.8869, 0.3007,
0.3290

18.8999, 0.5064,
0.3295

82.4891, 0.2891,
0.3289

16.1693, 0.5541,
0.3297

91.5752, 0.2827,
0.3289

■ 14.3351, 0.5964,
0.3298

■ 13.2844, 0.6259,
0.3299

■ 12.8354, 0.6400,
0.3299

Harmonies

Analogous

The Analogous color harmony consists of three colors that are next to each other on the color wheel.



40.5170, 0.3362, 0.3087



40.5170, 0.3559, 0.3291



40.5170, 0.3635, 0.3503

Triad

The Triadic color harmony groups three colors that are evenly spaced from another and form a triangle on the color wheel.



40.5170, 0.3559, 0.3291



40.5170, 0.3132, 0.3684



40.5170, 0.2699, 0.2904

Complementary

The Complementary color scheme is a pair of colors which are on the opposite of each other on the color wheel.



40.5170, 0.3559, 0.3291



55.0110, 0.2809, 0.3289

Split Complementary

Split-complementary colors differ from the complementary color scheme. The scheme consists of three colors, the original color and two neighbors of the complement color.



40.5170, 0.2644, 0.3045



40.5170, 0.3559, 0.3291



40.5170, 0.2888, 0.3505

Square

The Square scheme is like the rectangle color scheme, but the four colors are evenly spaced on the color wheel.



40.5170, 0.3559, 0.3291



40.5170, 0.3382, 0.3744



40.5170, 0.2712, 0.3265



40.5170, 0.2865, 0.2867

Rectangle

The Rectangle color scheme consists of four colors that form a rectangle on the color wheel.



40.5170, 0.3559, 0.3291



40.5170, 0.3606, 0.3624



40.5170, 0.2712, 0.3265



40.5170, 0.2667, 0.2940

Sweetspot

The Sweet Spot groups the original color and five complimentary colors.



40.5189, 0.3559, 0.3291



89.6775, 0.3229, 0.3290



42.2354, 0.3145, 0.2758



18.9650, 0.3240, 0.3290



0.0000, 0.0000, 0.0000



21.4041, 0.3127, 0.3290

Same Dimension

The Same Dimension uses a secret algorithm to generate beautiful new colors.



40.5189, 0.3559, 0.3291



61.1886, 0.3686, 0.3291



48.5287, 0.3504, 0.3556



11.2138, 0.3290, 0.3290



8.0802, 0.6400, 0.3299



0.4169, 0.6398, 0.3298

Inverse Universe

The Inverse Universe completely reimagines the original color for something new.



40.5189, 0.3559, 0.3291



61.1886, 0.3686, 0.3291



45.5889, 0.2789, 0.3008



11.2138, 0.3290, 0.3290



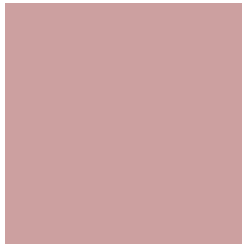
8.0802, 0.6400, 0.3299



0.4169, 0.6398, 0.3298

Previews

White Background



This preview shows how the Yxy color 40.5170, 0.3559, 0.3291 looks on a white background.

Color Contrast Check

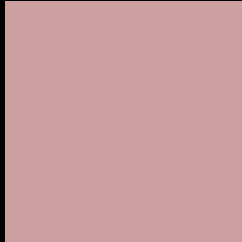
Large Text (above 18pt) WCAG AA × Fail

Any Text WCAG AA × Fail

Large Text (above 18pt) WCAG AAA × Fail

Any Text WCAG AAA × Fail

Black Background



This preview shows how the Yxy color 40.5170, 0.3559, 0.3291 looks on a black background.

Color Contrast Check

Large Text (above 18pt) WCAG AA ✓ Pass

Any Text WCAG AA ✓ Pass

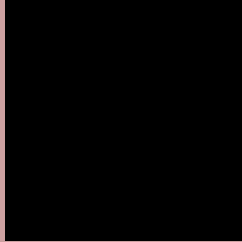
Large Text (above 18pt) WCAG AAA ✓ Pass

Any Text WCAG AAA ✓ Pass

If you want to check with other color combinations, try the [Color Contrast Checker](#).

Yxy 40.5170, 0.3559, 0.3291

Background



This preview shows how black text looks on a background with the Yxy color 40.5170, 0.3559, 0.3291.



This preview shows how white text looks on a background with the Yxy color 40.5170, 0.3559, 0.3291.

Color Blindness Simulation

Color vision deficiency is a very complex topic, and I could not describe the different causes any better than Wikipedia does, so if you want to learn more, you should check out their [article about color blindness](#).

Dichromacy



Original Color

40.5170, 0.3559, 0.3291

Protanopia

40.6166, 0.3207, 0.3345

Deuteranopia

40.6199, 0.3439, 0.3370



Tritanopia

40.3731, 0.3467, 0.3128

Trichromacy



Original Color

40.5170, 0.3559, 0.3291

Protanomaly

40.3919, 0.3333, 0.3317

Deuteranomaly

40.4334, 0.3483, 0.3343

Tritanomaly

40.5654, 0.3504, 0.3190

Monochromacy



Original Color

40.5170, 0.3559, 0.3291

Achromatopsia

41.7885, 0.3127, 0.3290

Achromatomaly

41.0228, 0.3276, 0.3290

CSS Examples

Text

The CSS property to change the color of the text to Yxy 40.5170, 0.3559, 0.3291 is called "color". The color property can be set on classes, ids or directly on the HTML element.

This example shows how text in the color `rgb(204, 160, 160)` looks like.

```
.text, #text, p{  
    color:rgb(204, 160, 160)  
}
```

If you want to add a text shadow in that color use the text-shadow property, you can generate a text shadow directly with our [CSS Text Shadow Generator](#).

Here you see how black text with a 4 pixel rgb(204, 160, 160) colored shadow looks like.

```
.shadow{ text-shadow: 4px 4px 2px rgb(204, 160, 160) }
```

Border

The CSS property to change the border of an element to Yxy 40.5170, 0.3559, 0.3291 is called "border". The border property can be set on classes, ids or directly on the HTML element.

This example shows the color as border, it can be applied via the CSS property "border" or "border-color".

```
.border, #border, table{ border:4px solid rgb(204, 160, 160) }
```

If only the border color should be changed use the property `border-color`.

```
.border{ border-color:rgb(204, 160, 160) }
```

If you want to add a box shadow in that color use:

Here you see how a box with a 4 pixel `rgb(204, 160, 160)` colored shadow looks like.

```
.boxshadow{ -moz-box-shadow:4px 4px 4px  
4px rgb(204, 160, 160); -webkit-box-  
shadow:4px 4px 4px 4px rgb(204, 160, 160);  
box-shadow:4px 4px 4px 4px rgb(204, 160,  
160) }
```


Background

The CSS property to change the background color of an element to Yxy 40.5170, 0.3559, 0.3291 is called "background". The background property can be set on classes, ids or directly on the HTML element.

```
.background, #background, body{  
background: rgb(204, 160, 160) }
```

If only the background color should be changed can be used:

```
.background{ background-color: rgb(204,  
160, 160) }
```

This example shows the color as background, it is applied via the CSS property "background".

To optimize and compress your CSS code, you can use our [online CSS compressor and optimizer](#) based on csstidy. If you want to create a linear or radial gradient as background or border, check our [CSS Gradient Generator](#).

Hey! You found this booklet interesting? Support Converting Colors with the new Membership Option!

The pro membership hides all ads, plus gives you double the colors in the color bucket, and more awesome pro features!

[Learn more, Memberships starting at \\$2.50/m!](#)

**Follow me
on Twitter!**

@ConvertingColor