

Converting Colors

$Yxy(40.7494, 0.3699, 0.3446)$

Have a look what the booklet for
Yxy(40.7494, 0.3699, 0.3446)
contains.

Yxy(40.8933, 0.3704, 0.3456)	3
Conversions	4
Details	6
Harmonies	12
Previews	24
Color Blindness Simulation	27
CSS Examples	30

Color

Yxy(40.8933, 0.3704, 0.3456)

Conversions

Conversions Part 1

Format	Color
Hex	CFA194
RGB	207, 161, 148
RGB Percent	81%, 63%, 58%
CMY	0.1881, 0.3686, 0.4196
CMYK	0.00, 0.22, 0.29, 0.19
HSL	13°, 38%, 70%
HSV	13°, 29%, 81%
XYZ	43.8278, 40.8933, 33.6044
YIQ	173.2720, 31.5890, 5.7090

Conversions

Conversions Part 2

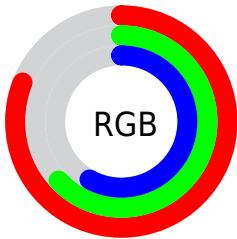
Format	Color
R_{YB}	207, 165, 148
Decimal	13607316
CIE _{Lab}	70.10, 15.16, 13.29
CIE _{LCh}	70, 20.161, 41.246
Yxy	40.8933, 0.3704, 0.3456
Android (android.graphics.Color)	4291797396 (0xFFCFA194)
YUV	173.2720, -12.4591, 29.5795
Hunter-Lab	63.9479, 10.4293, 13.6068

Details

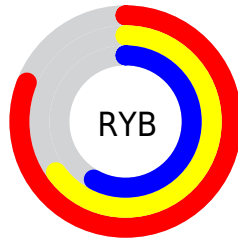
The Yxy color **40.8933, 0.3704, 0.3456** is a light color, and the websafe version is hex **CC9999**. A complement of this color would be **49.4045, 0.2699, 0.3117**, and the grayscale version is **41.9900, 0.3127, 0.3290**.

A 20% lighter version of the original color is **74.6360, 0.3518, 0.3434**, and **18.4757, 0.3894, 0.3496** is the 20% darker color. If you saturate the color by 10%, you get **35.0133, 0.3987, 0.3517**, and if you desaturate by 10%, it is **47.6232, 0.3466, 0.3395**.

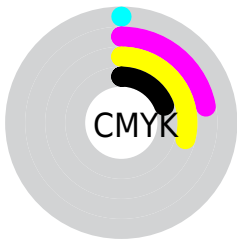
Distribution



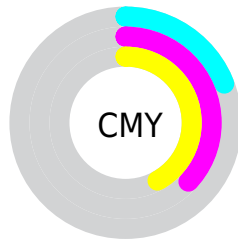
- Red (81%)
- Green (63%)
- Blue (58%)



- Red (81%)
- Yellow (65%)
- Blue (58%)



- Cyan (0%)
- Magenta (22%)
- Yellow (29%)
- Black (19%)





- Cyan (19%)
- Magenta (37%)
- Yellow (42%)

Brightness & Saturation Gradients

These gradients show how the Yxy color 40.8933, 0.3704, 0.3456 changes by changing the brightness by 10 percent. The first figure shows a shift by +10% for each color and the second figure -10%.


Similar to the brightness gradients but the following saturation gradients show a change of the Yxy color 40.8933, 0.3704, 0.3456 by changing the saturation by 10% instead.


 40.8933, 0.3704,
0.3456

 40.8933, 0.3704,
0.3456


349.8745, 0.3407,
0.3378

 28.2357, 0.3781,
0.3474


 76.5219, 0.3594,
0.3429

 18.5034, 0.3881,
0.3495


 100.2617, 0.3553,
0.3418

 11.3120, 0.4017,
0.3522


128.4644, 0.3519,
0.3409

 6.2771, 0.4211,
0.3554

161.5143, 0.3490,
0.3401

 3.0143, 0.4509,
0.3590

199.7959, 0.3465,
0.3394

 1.1392, 0.5257,
0.3785

243.6935, 0.3443,

 0.0112, 0.9714,

0.3388

0.0286

293.5916, 0.3424,
0.3383

0.0000, 0.0000,
0.0000

40.8933, 0.3704,
0.3456

40.8933, 0.3704,
0.3456

35.0133, 0.3987,
0.3517

47.6232, 0.3466,
0.3395

29.9436, 0.4318,
0.3573

55.2293, 0.3269,
0.3337

25.6497, 0.4692,
0.3618

63.7438, 0.3105,
0.3282

22.0925, 0.5096,
0.3641

73.1955, 0.2968,
0.3232

19.2294, 0.5496,
0.3633

83.6121, 0.2855,
0.3186

■ 17.0130, 0.5849,
0.3587

■ 92.0088, 0.2844,
0.3289

■ 15.3863, 0.6115,
0.3509

■ 15.1876, 0.6150,
0.3499

Harmonies

Analogous

The Analogous color harmony consists of three colors that are next to each other on the color wheel.



40.8933, 0.3565, 0.3210



40.8933, 0.3704, 0.3456



40.8933, 0.3679, 0.3674

Triad

The Triadic color harmony groups three colors that are evenly spaced from another and form a triangle on the color wheel.



40.8933, 0.3704, 0.3456



40.8933, 0.2935, 0.3619



40.8933, 0.2751, 0.2805

Complementary

The Complementary color scheme is a pair of colors which are on the opposite of each other on the color wheel.



40.8933, 0.3704, 0.3456



49.4045, 0.2699, 0.3117

Split Complementary

Split-complementary colors differ from the complementary color scheme. The scheme consists of three colors, the original color and two neighbors of the complement color.



40.8933, 0.2601, 0.2885



40.8933, 0.3704, 0.3456



40.8933, 0.2703, 0.3351

Square

The Square scheme is like the rectangle color scheme, but the four colors are evenly spaced on the color wheel.



40.8933, 0.3704, 0.3456



40.8933, 0.3227, 0.3788



40.8933, 0.2583, 0.3080



40.8933, 0.3006, 0.2846

Rectangle

The Rectangle color scheme consists of four colors that form a rectangle on the color wheel.



40.8933, 0.3704, 0.3456



40.8933, 0.3574, 0.3774



40.8933, 0.2583, 0.3080



40.8933, 0.2688, 0.2818

Sweetspot

The Sweet Spot groups the original color and five complimentary colors.



40.8952, 0.3704, 0.3456



87.7149, 0.3280, 0.3340



38.3579, 0.3278, 0.2728



18.3739, 0.3307, 0.3348



0.0000, 0.0000, 0.0000



21.4041, 0.3127, 0.3290

Same Dimension

The Same Dimension uses a secret algorithm to generate beautiful new colors.



40.8952, 0.3704, 0.3456



59.7984, 0.3865, 0.3492



52.3657, 0.3606, 0.3810



12.2240, 0.3285, 0.3342



9.6827, 0.6128, 0.3516



0.6622, 0.5766, 0.3803

Inverse Universe

The Inverse Universe completely reimagines the original color for something new.



49.4045, 0.2699, 0.3117



75.5255, 0.2616, 0.3076



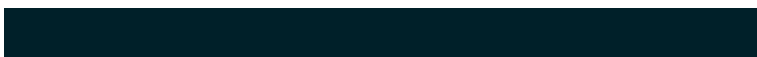
37.6166, 0.2656, 0.2709



12.9473, 0.2983, 0.3238



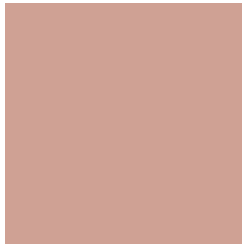
19.1441, 0.2047, 0.2570



1.1822, 0.2088, 0.2717

Previews

White Background



This preview shows how the Yxy color 40.8933, 0.3704, 0.3456 looks on a white background.

Color Contrast Check

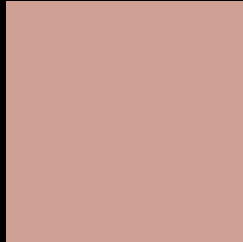
Large Text (above 18pt) WCAG AA × Fail

Any Text WCAG AA × Fail

Large Text (above 18pt) WCAG AAA × Fail

Any Text WCAG AAA × Fail

Black Background



This preview shows how the Yxy color 40.8933, 0.3704, 0.3456 looks on a black background.

Color Contrast Check

Large Text (above 18pt) WCAG AA ✓ Pass

Any Text WCAG AA ✓ Pass

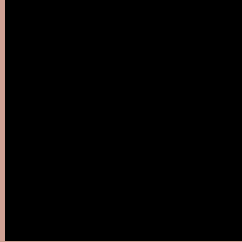
Large Text (above 18pt) WCAG AAA ✓ Pass

Any Text WCAG AAA ✓ Pass

If you want to check with other color combinations, try the [Color Contrast Checker](#).

Yxy 40.8933, 0.3704, 0.3456

Background



This preview shows how black text looks on a background with the Yxy color 40.8933, 0.3704, 0.3456.



This preview shows how white text looks on a background with the Yxy color 40.8933, 0.3704, 0.3456.

Color Blindness Simulation

Color vision deficiency is a very complex topic, and I could not describe the different causes any better than Wikipedia does, so if you want to learn more, you should check out their [article about color blindness](#).

Dichromacy



Original Color

40.8933, 0.3704, 0.3456

Protanopia

41.0094, 0.3356, 0.3538

Deuteranopia

40.8872, 0.3601, 0.3527



Tritanopia

40.9113, 0.3516, 0.3142

Trichromacy



Original Color

40.8933, 0.3704, 0.3456

Protanomaly

40.6906, 0.3479, 0.3505

Deuteranomaly

41.0750, 0.3644, 0.3511

Tritanomaly

40.8148, 0.3582, 0.3254

Monochromacy



Original Color

40.8933, 0.3704, 0.3456

Achromatopsia

41.7885, 0.3127, 0.3290

Achromatomaly

41.3706, 0.3319, 0.3357

CSS Examples

Text

The CSS property to change the color of the text to Yxy 40.8933, 0.3704, 0.3456 is called "color". The color property can be set on classes, ids or directly on the HTML element.

This example shows how text in the color `rgb(207, 161, 148)` looks like.

```
.text, #text, p{  
    color:rgb(207, 161, 148)  
}
```

If you want to add a text shadow in that color use the text-shadow property, you can generate a text shadow directly with our [CSS Text Shadow Generator](#).

Here you see how black text with a 4 pixel rgb(207, 161, 148) colored shadow looks like.

```
.shadow{ text-shadow: 4px 4px 2px rgb(207, 161, 148) }
```

Border

The CSS property to change the border of an element to Yxy 40.8933, 0.3704, 0.3456 is called "border". The border property can be set on classes, ids or directly on the HTML element.

This example shows the color as border, it can be applied via the CSS property "border" or "border-color".

```
.border, #border, table{ border:4px solid rgb(207, 161, 148) }
```

If only the border color should be changed use the property `border-color`.

```
.border{ border-color:rgb(207, 161, 148) }
```

If you want to add a box shadow in that color use:

Here you see how a box with a 4 pixel `rgb(207, 161, 148)` colored shadow looks like.

```
.boxshadow{ -moz-box-shadow:4px 4px 4px  
4px rgb(207, 161, 148); -webkit-box-  
shadow:4px 4px 4px 4px rgb(207, 161, 148);  
box-shadow:4px 4px 4px 4px rgb(207, 161,  
148) }
```


Background

The CSS property to change the background color of an element to Yxy 40.8933, 0.3704, 0.3456 is called "background". The background property can be set on classes, ids or directly on the HTML element.

```
.background, #background, body{  
background: rgb(207, 161, 148) }
```

If only the background color should be changed can be used:

```
.background{ background-color: rgb(207,  
161, 148) }
```

This example shows the color as background, it is applied via the CSS property "background".

To optimize and compress your CSS code, you can use our [online CSS compressor and optimizer](#) based on csstidy. If you want to create a linear or radial gradient as background or border, check our [CSS Gradient Generator](#).

Hey! You found this booklet interesting? Support Converting Colors with the new Membership Option!

The pro membership hides all ads, plus gives you double the colors in the color bucket, and more awesome pro features!

[Learn more, Memberships starting at \\$2.50/m!](#)

**Follow me
on Twitter!**

@ConvertingColor