

Converting Colors

$Y_{xy}(40.7555, 0.3548, 0.3551)$

Have a look what the booklet for
Yxy(40.7555, 0.3548, 0.3551)
contains.

Yxy(40.5855, 0.3549, 0.3544)	3
<i>Conversions</i>	4
<i>Details</i>	6
<i>Harmonies</i>	12
<i>Previews</i>	24
<i>Color Blindness Simulation</i>	27
<i>CSS Examples</i>	30

Color

Yxy(40.5855, 0.3549, 0.3544)

Conversions

Conversions Part 1

Format	Color
Hex	C0A693
RGB	192, 166, 147
RGB Percent	75%, 65%, 58%
CMY	0.2470, 0.3490, 0.4236
CMYK	0.00, 0.14, 0.23, 0.25
HSL	25°, 26%, 66%
HSV	25°, 23%, 75%
XYZ	40.6428, 40.5855, 33.2906
YIQ	171.6080, 21.5950, -0.3970

Conversions

Conversions Part 2

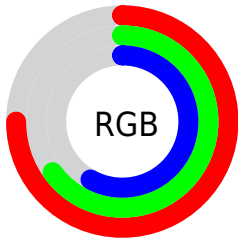
Format	Color
R _Y B	192, 180, 147
Decimal	12625555
CIE Lab	69.88, 6.50, 13.34
CIE LCh	70, 14.839, 64.027
Yxy	40.5855, 0.3549, 0.3544
Android (android.graphics.Color)	4290815635 (0xFFC0A693)
YUV	171.6080, -12.1317, 17.8838
Hunter-Lab	63.7068, 2.3902, 13.6121

Details

The Yxy color **40.5855, 0.3549, 0.3544** is a light color, and the websafe version is hex **CC9999**. A complement of this color would be **39.8967, 0.2764, 0.3022**, and the grayscale version is **41.1020, 0.3127, 0.3290**.

A 20% lighter version of the original color is **76.0697, 0.3470, 0.3497**, and **18.2824, 0.3685, 0.3620** is the 20% darker color. If you saturate the color by 10%, you get **36.1731, 0.3776, 0.3659**, and if you desaturate by 10%, it is **45.4502, 0.3351, 0.3432**.

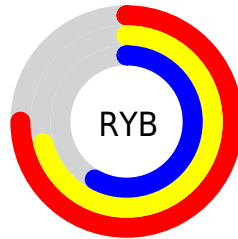
Distribution



Red (75%)

Green (65%)

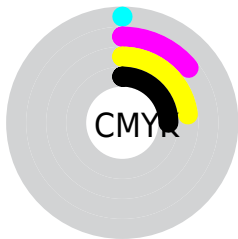
Blue (58%)



Red (75%)

Yellow (71%)

Blue (58%)

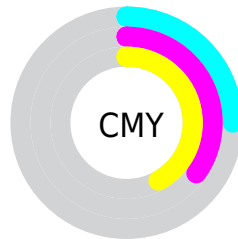


Cyan (0%)

Magenta (14%)

Yellow (23%)

Black (25%)



Cyan (25%)


Magenta (35%)


Yellow (42%)

Brightness & Saturation Gradients


These gradients show how the Yxy color 40.5855, 0.3549, 0.3544 changes by changing the brightness by 10 percent. The first figure shows a shift by +10% for each color and the second figure -10%.

Similar to the brightness gradients but the following saturation gradients show a change of the Yxy color 40.5855, 0.3549, 0.3544 by changing the saturation by 10% instead.


 40.5855, 0.3549,
0.3544


 40.5855, 0.3549,
0.3544


348.5852, 0.3332,
0.3417

 27.9953, 0.3605,
0.3575


 76.0543, 0.3469,
0.3498

 18.3222, 0.3678,
0.3616


 99.7017, 0.3439,
0.3481

 11.1815, 0.3777,
0.3669


127.8036, 0.3414,
0.3466

 6.1891, 0.3918,
0.3741

160.7445, 0.3393,
0.3453

 2.9604, 0.4135,
0.3845

198.9087, 0.3375,
0.3443

 1.1111, 0.4774,
0.4238

242.6806, 0.3359,

 0.0000, 1.0000,

0.3433

0.0000

292.4447, 0.3344,
0.3425

0.0000, 0.0000,
0.0000

40.5855, 0.3549,
0.3544

40.5855, 0.3549,
0.3544

36.1731, 0.3776,
0.3659

45.4502, 0.3351,
0.3432

32.1936, 0.4032,
0.3771

50.7747, 0.3180,
0.3325

28.6345, 0.4317,
0.3873

56.5733, 0.3033,
0.3226

25.4802, 0.4621,
0.3955

62.8581, 0.2907,
0.3133

22.7142, 0.4931,
0.4004

69.6404, 0.2798,
0.3049

■ 20.3184, 0.5228,
0.4008

■ 76.4592, 0.2741,
0.3046

■ 18.2725, 0.5487,
0.3958

■ 82.9235, 0.2752,
0.3168

■ 17.1046, 0.5638,
0.3906

■ 89.7895, 0.2762,
0.3286

■ 89.9483, 0.2763,
0.3289

Harmonies

Analogous

The Analogous color harmony consists of three colors that are next to each other on the color wheel.



40.5855, 0.3537, 0.3374



40.5855, 0.3549, 0.3544



40.5855, 0.3444, 0.3655

Triad

The Triadic color harmony groups three colors that are evenly spaced from another and form a triangle on the color wheel.



40.5855, 0.3549, 0.3544



40.5855, 0.2848, 0.3386



40.5855, 0.2989, 0.2942

Complementary

The Complementary color scheme is a pair of colors which are on the opposite of each other on the color wheel.



40.5855, 0.3549, 0.3544



39.8967, 0.2764, 0.3022

Split Complementary

Split-complementary colors differ from the complementary color scheme. The scheme consists of three colors, the original color and two neighbors of the complement color.



40.5855, 0.2813, 0.2935



40.5855, 0.3549, 0.3544



40.5855, 0.2734, 0.3183

Square

The Square scheme is like the rectangle color scheme, but the four colors are evenly spaced on the color wheel.



40.5855, 0.3549, 0.3544



40.5855, 0.3037, 0.3568



40.5855, 0.2722, 0.3020



40.5855, 0.3207, 0.3034

Rectangle

The Rectangle color scheme consists of four colors that form a rectangle on the color wheel.



40.5855, 0.3549, 0.3544



40.5855, 0.3325, 0.3675



40.5855, 0.2722, 0.3020



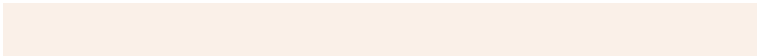
40.5855, 0.2923, 0.2929

Sweetspot

The Sweet Spot groups the original color and five complimentary colors.



40.5873, 0.3549, 0.3544



88.3534, 0.3240, 0.3364



35.0995, 0.3334, 0.2945



18.8282, 0.3250, 0.3370



97.7402, 0.3127, 0.3290



20.4902, 0.3127, 0.3290

Same Dimension

The Same Dimension uses a secret algorithm to generate beautiful new colors.



40.5873, 0.3549, 0.3544



69.4314, 0.3659, 0.3601



49.3931, 0.3487, 0.3823



10.7613, 0.3279, 0.3388



11.6549, 0.5616, 0.3923



0.6398, 0.5223, 0.4235

Inverse Universe

The Inverse Universe completely reimagines the original color for something new.



39.8967, 0.2764, 0.3022



67.9634, 0.2685, 0.2956



32.0587, 0.2738, 0.2694



10.6927, 0.2984, 0.3190



10.3574, 0.1850, 0.1860



0.5816, 0.1948, 0.2212

Previews

White Background



This preview shows how the Yxy color 40.5855, 0.3549, 0.3544 looks on a white background.

Color Contrast Check

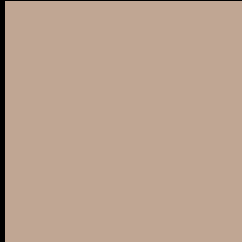
Large Text (above 18pt) WCAG AA × Fail

Any Text WCAG AA × Fail

Large Text (above 18pt) WCAG AAA × Fail

Any Text WCAG AAA × Fail

Black Background



This preview shows how the Yxy color 40.5855, 0.3549, 0.3544 looks on a black background.

Color Contrast Check

Large Text (above 18pt) WCAG AA ✓ Pass

Any Text WCAG AA ✓ Pass

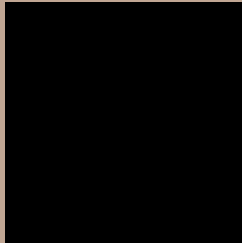
Large Text (above 18pt) WCAG AAA ✓ Pass

Any Text WCAG AAA ✓ Pass

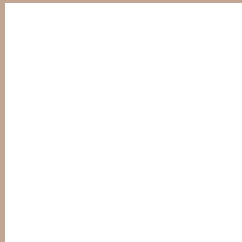
If you want to check with other color combinations, try the [Color Contrast Checker](#).

Yxy 40.5855, 0.3549, 0.3544

Background



This preview shows how black text looks on a background with the Yxy color 40.5855, 0.3549, 0.3544.



This preview shows how white text looks on a background with the Yxy color 40.5855, 0.3549, 0.3544.

Color Blindness Simulation

Color vision deficiency is a very complex topic, and I could not describe the different causes any better than Wikipedia does, so if you want to learn more, you should check out their [article about color blindness](#).

Dichromacy



Original Color

40.5855, 0.3549, 0.3544

Protanopia

40.5031, 0.3394, 0.3580

Deuteranopia

40.7526, 0.3591, 0.3528



Tritanopia

40.5379, 0.3325, 0.3123

Trichromacy



Original Color

40.5855, 0.3549, 0.3544

Protanomaly

40.7044, 0.3453, 0.3577

Deuteranomaly

40.6190, 0.3581, 0.3528

Tritanomaly

40.3803, 0.3407, 0.3265

Monochromacy



Original Color

40.5855, 0.3549, 0.3544

Achromatopsia

41.2543, 0.3127, 0.3290

Achromatomaly

40.9775, 0.3270, 0.3386

CSS Examples

Text

The CSS property to change the color of the text to Yxy 40.5855, 0.3549, 0.3544 is called "color". The color property can be set on classes, ids or directly on the HTML element.

This example shows how text in the color `rgb(192, 166, 147)` looks like.

```
.text, #text, p{  
    color:rgb(192, 166, 147)  
}
```

If you want to add a text shadow in that color use the text-shadow property, you can generate a text shadow directly with our [CSS Text Shadow Generator](#).

Here you see how black text with a 4 pixel rgb(192, 166, 147) colored shadow looks like.

```
.shadow{ text-shadow: 4px 4px 2px rgb(192, 166, 147) }
```

Border

The CSS property to change the border of an element to Yxy 40.5855, 0.3549, 0.3544 is called "border". The border property can be set on classes, ids or directly on the HTML element.

This example shows the color as border, it can be applied via the CSS property "border" or "border-color".

```
.border, #border, table{ border:4px solid rgb(192, 166, 147) }
```

If only the border color should be changed use the property `border-color`.

```
.border{ border-color:rgb(192, 166, 147) }
```

If you want to add a box shadow in that color use:

Here you see how a box with a 4 pixel `rgb(192, 166, 147)` colored shadow looks like.

```
.boxshadow{ -moz-box-shadow:4px 4px 4px  
4px rgb(192, 166, 147); -webkit-box-  
shadow:4px 4px 4px 4px rgb(192, 166, 147);  
box-shadow:4px 4px 4px 4px rgb(192, 166,  
147) }
```


Background

The CSS property to change the background color of an element to Yxy 40.5855, 0.3549, 0.3544 is called "background". The background property can be set on classes, ids or directly on the HTML element.

```
.background, #background, body{  
background: rgb(192, 166, 147) }
```

If only the background color should be changed can be used:

```
.background{ background-color: rgb(192,  
166, 147) }
```

This example shows the color as background, it is applied via the CSS property "background".

To optimize and compress your CSS code, you can use our [online CSS compressor and optimizer](#) based on csstidy. If you want to create a linear or radial gradient as background or border, check our [CSS Gradient Generator](#).

Hey! You found this booklet interesting? Support Converting Colors with the new Membership Option!

The pro membership hides all ads, plus gives you double the colors in the color bucket, and more awesome pro features!

[Learn more, Memberships starting at \\$2.50/m!](#)

**Follow me
on Twitter!**

@ConvertingColor