

Converting Colors

$Y_{xy}(40.8664, 0.3345, 0.3217)$

Have a look what the booklet for
Yxy(40.8664, 0.3345, 0.3217)
contains.

Yxy(40.7907, 0.3349, 0.3212)	3
Conversions	4
Details	6
Harmonies	12
Previews	24
Color Blindness Simulation	27
CSS Examples	30

Color

Yxy(40.7907, 0.3349, 0.3212)

Conversions

Conversions Part 1

Format	Color
Hex	C1A4AA
RGB	193, 164, 170
RGB Percent	76%, 64%, 67%
CMY	0.2430, 0.3569, 0.3332
CMYK	0.00, 0.15, 0.12, 0.24
HSL	348°, 19%, 70%
HSV	348°, 15%, 76%
XYZ	42.5305, 40.7907, 43.6735
YIQ	173.3550, 15.3580, 8.0140

Conversions

Conversions Part 2

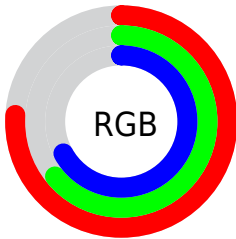
Format	Color
R_{YB}	193, 164, 170
Decimal	12690602
CIE _{Lab}	70.03, 11.62, 0.83
CIE _{LCh}	70, 11.650, 4.081
Yxy	40.7907, 0.3349, 0.3212
Android (android.graphics.Color)	4290880682 (0xFFC1A4AA)
YUV	173.3550, -1.6540, 17.2287
Hunter-Lab	63.8676, 7.0979, 4.1641

Details

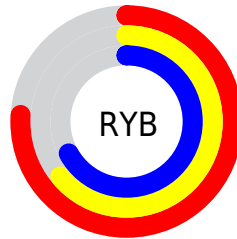
The Yxy color $40.7907, 0.3349, 0.3212$ is a light color, and the websafe version is hex $CC9999$. A complement of this color would be $49.6320, 0.2943, 0.3370$, and the grayscale version is $41.9854, 0.3127, 0.3290$.

A 20% lighter version of the original color is $76.4233, 0.3311, 0.3230$, and $18.3853, 0.3413, 0.3184$ is the 20% darker color. If you saturate the color by 10%, you get $33.8547, 0.3540, 0.3157$, and if you desaturate by 10%, it is $48.8462, 0.3194, 0.3265$.

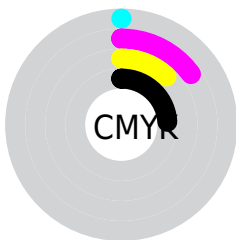
Distribution



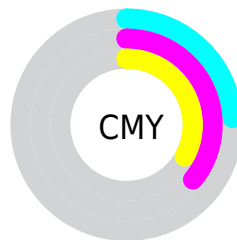
- Red (76%)
- Green (64%)
- Blue (67%)



- Red (76%)
- Yellow (64%)
- Blue (67%)



- Cyan (0%)
- Magenta (15%)
- Yellow (12%)
- Black (24%)




- Cyan (24%)
- Magenta (36%)
- Yellow (33%)

Brightness & Saturation Gradients


These gradients show how the Yxy color 40.7907, 0.3349, 0.3212 changes by changing the brightness by 10 percent. The first figure shows a shift by +10% for each color and the second figure -10%.


Similar to the brightness gradients but the following saturation gradients show a change of the Yxy color 40.7907, 0.3349, 0.3212 by changing the saturation by 10% instead.

 40.7907, 0.3349,
0.3212


 40.7907, 0.3349,
0.3212


349.4451, 0.3235,
0.3252

 28.1556, 0.3378,
0.3202

 76.3661, 0.3307,
0.3227

 18.4430, 0.3416,
0.3188


 100.0751, 0.3292,
0.3232

 11.2685, 0.3468,
0.3169


128.2442, 0.3278,
0.3237

 6.2477, 0.3543,
0.3142

161.2579, 0.3267,
0.3241

 2.9963, 0.3658,
0.3100

199.5003, 0.3258,
0.3244

 1.1298, 0.3863,
0.3024

243.3561, 0.3249,

 0.0032, 0.9889,

0.3247

0.0111

293.2096, 0.3242,
0.3250

0.0000, 0.0000,
0.0000

40.7907, 0.3349,
0.3212

40.7907, 0.3349,
0.3212

33.8547, 0.3540,
0.3157

48.8462, 0.3194,
0.3265

27.9834, 0.3775,
0.3100

58.0621, 0.3068,
0.3314

23.1254, 0.4060,
0.3047

68.4839, 0.2966,
0.3359

19.2231, 0.4396,
0.3003

80.1530, 0.2883,
0.3400

16.2129, 0.4778,
0.2975

89.5451, 0.2811,
0.3380

■ 14.0234, 0.5185,
0.2974

■ 90.0812, 0.2768,
0.3289

■ 12.5723, 0.5582,
0.3008

■ 11.7597, 0.5920,
0.3076

■ 11.4951, 0.6060,
0.3112

Harmonies

Analogous

The Analogous color harmony consists of three colors that are next to each other on the color wheel.



40.7907, 0.3191, 0.3088



40.7907, 0.3349, 0.3212



40.7907, 0.3447, 0.3358

Triad

The Triadic color harmony groups three colors that are evenly spaced from another and form a triangle on the color wheel.



40.7907, 0.3349, 0.3212



40.7907, 0.3229, 0.3583



40.7907, 0.2807, 0.3079

Complementary

The Complementary color scheme is a pair of colors which are on the opposite of each other on the color wheel.



40.7907, 0.3349, 0.3212



49.6320, 0.2943, 0.3370

Split Complementary

Split-complementary colors differ from the complementary color scheme. The scheme consists of three colors, the original color and two neighbors of the complement color.



40.7907, 0.2817, 0.3208



40.7907, 0.3349, 0.3212



40.7907, 0.3057, 0.3506

Square

The Square scheme is like the rectangle color scheme, but the four colors are evenly spaced on the color wheel.



40.7907, 0.3349, 0.3212



40.7907, 0.3376, 0.3576



40.7907, 0.2908, 0.3366



40.7907, 0.2880, 0.3010

Rectangle

The Rectangle color scheme consists of four colors that form a rectangle on the color wheel.



40.7907, 0.3349, 0.3212



40.7907, 0.3464, 0.3451



40.7907, 0.2908, 0.3366



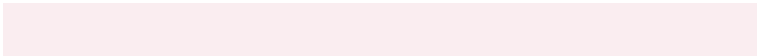
40.7907, 0.2801, 0.3116

Sweetspot

The Sweet Spot groups the original color and five complimentary colors.



40.7925, 0.3349, 0.3212



87.4000, 0.3194, 0.3265



40.9313, 0.3087, 0.2916



18.5168, 0.3204, 0.3261



97.7402, 0.3127, 0.3290



20.4902, 0.3127, 0.3290

Same Dimension

The Same Dimension uses a secret algorithm to generate beautiful new colors.



40.7925, 0.3349, 0.3212



68.7974, 0.3407, 0.3194



43.6098, 0.3389, 0.3398



10.1114, 0.3257, 0.3242



7.6527, 0.6031, 0.3096



0.3409, 0.5406, 0.2752

Inverse Universe

The Inverse Universe completely reimagines the original color for something new.



40.7925, 0.3349, 0.3212



68.7974, 0.3407, 0.3194



46.3582, 0.2898, 0.3180



10.1114, 0.3257, 0.3242



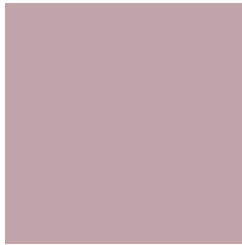
7.6527, 0.6031, 0.3096



0.3409, 0.5406, 0.2752

Previews

White Background



This preview shows how the Yxy color 40.7907, 0.3349, 0.3212 looks on a white background.

Color Contrast Check

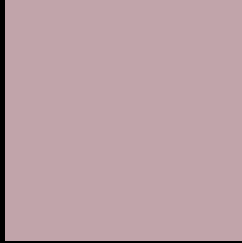
Large Text (above 18pt) WCAG AA × Fail

Any Text WCAG AA × Fail

Large Text (above 18pt) WCAG AAA × Fail

Any Text WCAG AAA × Fail

Black Background



This preview shows how the Yxy color 40.7907, 0.3349, 0.3212 looks on a black background.

Color Contrast Check

Large Text (above 18pt) WCAG AA ✓ Pass

Any Text WCAG AA ✓ Pass

Large Text (above 18pt) WCAG AAA ✓ Pass

Any Text WCAG AAA ✓ Pass

If you want to check with other color combinations, try the [Color Contrast Checker](#).

Yxy 40.7907, 0.3349, 0.3212

Background



This preview shows how black text looks on a background with the Yxy color 40.7907, 0.3349, 0.3212.



This preview shows how white text looks on a background with the Yxy color 40.7907, 0.3349, 0.3212.

Color Blindness Simulation

Color vision deficiency is a very complex topic, and I could not describe the different causes any better than Wikipedia does, so if you want to learn more, you should check out their [article about color blindness](#).

Dichromacy



Original Color

40.7907, 0.3349, 0.3212

Protanopia

40.8041, 0.3130, 0.3235

Deuteranopia

40.8661, 0.3298, 0.3238



Tritanopia

40.7983, 0.3305, 0.3123

Trichromacy



Original Color

40.7907, 0.3349, 0.3212

Protanomaly

40.8462, 0.3204, 0.3223

Deuteranomaly

40.7597, 0.3319, 0.3225

Tritanomaly

40.7197, 0.3323, 0.3148

Monochromacy



Original Color

40.7907, 0.3349, 0.3212

Achromatopsia

41.7885, 0.3127, 0.3290

Achromatomaly

41.4313, 0.3201, 0.3263

CSS Examples

Text

The CSS property to change the color of the text to Yxy 40.7907, 0.3349, 0.3212 is called "color". The color property can be set on classes, ids or directly on the HTML element.

This example shows how text in the color `rgb(193, 164, 170)` looks like.

```
.text, #text, p{  
    color:rgb(193, 164, 170)  
}
```

If you want to add a text shadow in that color use the text-shadow property, you can generate a text shadow directly with our [CSS Text Shadow Generator](#).

Here you see how black text with a 4 pixel rgb(193, 164, 170) colored shadow looks like.

```
.shadow{ text-shadow: 4px 4px 2px rgb(193, 164, 170) }
```

Border

The CSS property to change the border of an element to Yxy 40.7907, 0.3349, 0.3212 is called "border". The border property can be set on classes, ids or directly on the HTML element.

This example shows the color as border, it can be applied via the CSS property "border" or "border-color".

```
.border, #border, table{ border:4px solid rgb(193, 164, 170) }
```

If only the border color should be changed use the property `border-color`.

```
.border{ border-color:rgb(193, 164, 170) }
```

If you want to add a box shadow in that color use:

Here you see how a box with a 4 pixel `rgb(193, 164, 170)` colored shadow looks like.

```
.boxshadow{ -moz-box-shadow:4px 4px 4px  
4px rgb(193, 164, 170); -webkit-box-  
shadow:4px 4px 4px 4px rgb(193, 164, 170);  
box-shadow:4px 4px 4px 4px rgb(193, 164,  
170) }
```


Background

The CSS property to change the background color of an element to Yxy 40.7907, 0.3349, 0.3212 is called "background". The background property can be set on classes, ids or directly on the HTML element.

```
.background, #background, body{  
background: rgb(193, 164, 170) }
```

If only the background color should be changed can be used:

```
.background{ background-color: rgb(193,  
164, 170) }
```

This example shows the color as background, it is applied via the CSS property "background".

To optimize and compress your CSS code, you can use our [online CSS compressor and optimizer](#) based on csstidy. If you want to create a linear or radial gradient as background or border, check our [CSS Gradient Generator](#).

Hey! You found this booklet interesting? Support Converting Colors with the new Membership Option!

The pro membership hides all ads, plus gives you double the colors in the color bucket, and more awesome pro features!

[Learn more, Memberships starting at \\$2.50/m!](#)

**Follow me
on Twitter!**

@ConvertingColor