

Converting Colors

$Y_{xy}(40.9225, 0.3363, 0.3263)$

Have a look what the booklet for
Yxy(40.9225, 0.3363, 0.3263)
contains.

Yxy(40.9068, 0.3365, 0.3265)	3
Conversions	4
Details	6
Harmonies	12
Previews	24
Color Blindness Simulation	27
CSS Examples	30

Color

Yxy(40.9068, 0.3365, 0.3265)

Conversions

Conversions Part 1

Format	Color
Hex	C0A5A7
RGB	192, 165, 167
RGB Percent	75%, 65%, 65%
CMY	0.2472, 0.3529, 0.3452
CMYK	0.00, 0.14, 0.13, 0.25
HSL	356°, 18%, 70%
HSV	356°, 14%, 75%
XYZ	42.1597, 40.9068, 42.2223
YIQ	173.3010, 15.4500, 6.3460

Conversions

Conversions Part 2

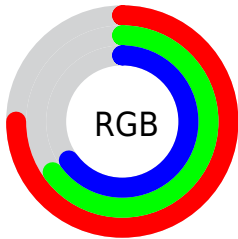
Format	Color
RYB	192, 165, 167
Decimal	12625319
CIELab	70.11, 10.15, 2.62
CIElCh	70, 10.487, 14.478
Yxy	40.9068, 0.3365, 0.3265
Android (android.graphics.Color)	4290815399 (0xFFC0A5A7)
YUV	173.3010, -3.1064, 16.3990
Hunter-Lab	63.9584, 5.7352, 5.6304

Details

The Yxy color **40.9068, 0.3365, 0.3265** is a light color, and the websafe version is hex **CC9999**. A complement of this color would be **49.4024, 0.2930, 0.3315**, and the grayscale version is **41.9597, 0.3127, 0.3290**.

A 20% lighter version of the original color is **76.6001, 0.3323, 0.3270**, and **18.4513, 0.3437, 0.3255** is the 20% darker color. If you saturate the color by 10%, you get **33.8809, 0.3585, 0.3246**, and if you desaturate by 10%, it is **49.0663, 0.3188, 0.3283**.

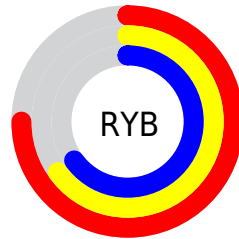
Distribution



Red (75%)

Green (65%)

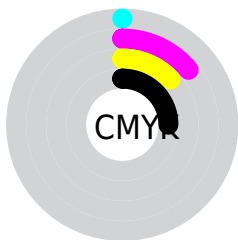
Blue (65%)



Red (75%)

Yellow (65%)

Blue (65%)

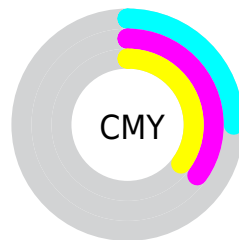


Cyan (0%)

Magenta (14%)

Yellow (13%)

Black (25%)



Cyan (25%)


Magenta (35%)


Yellow (35%)

Brightness & Saturation Gradients


These gradients show how the Yxy color 40.9068, 0.3365, 0.3265 changes by changing the brightness by 10 percent. The first figure shows a shift by +10% for each color and the second figure -10%.


Similar to the brightness gradients but the following saturation gradients show a change of the Yxy color 40.9068, 0.3365, 0.3265 by changing the saturation by 10% instead.


 40.9068, 0.3365,
0.3265


 40.9068, 0.3365,
0.3265


349.9309, 0.3243,
0.3279

 28.2463, 0.3396,
0.3261


 76.5424, 0.3320,
0.3270

 18.5114, 0.3438,
0.3256


 100.2862, 0.3303,
0.3272

 11.3178, 0.3493,
0.3249


128.4933, 0.3289,
0.3274

 6.2810, 0.3574,
0.3238

161.5480, 0.3277,
0.3275

 3.0167, 0.3699,
0.3220

199.8347, 0.3267,
0.3276

 1.1404, 0.3921,
0.3184

243.7379, 0.3258,

 0.0122, 0.9550,

0.3277

0.0450

293.6418, 0.3250,
0.3278

0.0000, 0.0000,
0.0000

40.9068, 0.3365,
0.3265

40.9068, 0.3365,
0.3265

33.8809, 0.3585,
0.3246

49.0663, 0.3188,
0.3283

27.9334, 0.3858,
0.3227

58.4008, 0.3046,
0.3300

23.0126, 0.4190,
0.3209

68.9562, 0.2932,
0.3315

19.0602, 0.4583,
0.3195

80.7742, 0.2839,
0.3329

16.0124, 0.5026,
0.3189

89.9416, 0.2762,
0.3289

■ 13.7975, 0.5483,
0.3194

■ 12.3331, 0.5897,
0.3213

■ 11.5198, 0.6204,
0.3245

■ 11.2332, 0.6326,
0.3258

Harmonies

Analogous

The Analogous color harmony consists of three colors that are next to each other on the color wheel.



40.9068, 0.3238, 0.3143



40.9068, 0.3365, 0.3265



40.9068, 0.3428, 0.3397

Triad

The Triadic color harmony groups three colors that are evenly spaced from another and form a triangle on the color wheel.



40.9068, 0.3365, 0.3265



40.9068, 0.3166, 0.3537



40.9068, 0.2854, 0.3072

Complementary

The Complementary color scheme is a pair of colors which are on the opposite of each other on the color wheel.



40.9068, 0.3365, 0.3265



49.4024, 0.2930, 0.3315

Split Complementary

Split-complementary colors differ from the complementary color scheme. The scheme consists of three colors, the original color and two neighbors of the complement color.



40.9068, 0.2836, 0.3172



40.9068, 0.3365, 0.3265



40.9068, 0.3014, 0.3444

Square

The Square scheme is like the rectangle color scheme, but the four colors are evenly spaced on the color wheel.



40.9068, 0.3365, 0.3265



40.9068, 0.3310, 0.3558



40.9068, 0.2894, 0.3309



40.9068, 0.2943, 0.3032

Rectangle

The Rectangle color scheme consists of four colors that form a rectangle on the color wheel.



40.9068, 0.3365, 0.3265



40.9068, 0.3423, 0.3473



40.9068, 0.2894, 0.3309



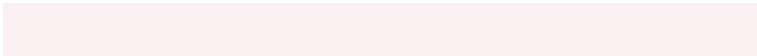
40.9068, 0.2839, 0.3099

Sweetspot

The Sweet Spot groups the original color and five complimentary colors.



40.9086, 0.3365, 0.3265



88.8980, 0.3189, 0.3283



41.6327, 0.3123, 0.2946



18.8148, 0.3201, 0.3282



97.7402, 0.3127, 0.3290



20.4902, 0.3127, 0.3290

Same Dimension

The Same Dimension uses a secret algorithm to generate beautiful new colors.



40.9086, 0.3365, 0.3265



69.8119, 0.3431, 0.3259



45.0665, 0.3362, 0.3436



10.0895, 0.3278, 0.3274



7.5665, 0.6310, 0.3250



0.3311, 0.6000, 0.3079

Inverse Universe

The Inverse Universe completely reimagines the original color for something new.



40.9086, 0.3365, 0.3265



69.8119, 0.3431, 0.3259



44.7466, 0.2911, 0.3139



10.0895, 0.3278, 0.3274



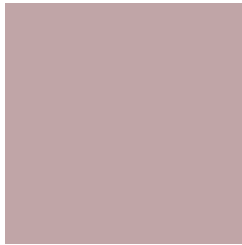
7.5665, 0.6310, 0.3250



0.3311, 0.6000, 0.3079

Previews

White Background



This preview shows how the Yxy color 40.9068, 0.3365, 0.3265 looks on a white background.

Color Contrast Check

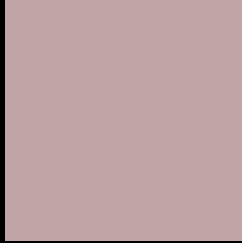
Large Text (above 18pt) WCAG AA × Fail

Any Text WCAG AA × Fail

Large Text (above 18pt) WCAG AAA × Fail

Any Text WCAG AAA × Fail

Black Background



This preview shows how the Yxy color 40.9068, 0.3365, 0.3265 looks on a black background.

Color Contrast Check

Large Text (above 18pt) WCAG AA ✓ Pass

Any Text WCAG AA ✓ Pass

Large Text (above 18pt) WCAG AAA ✓ Pass

Any Text WCAG AAA ✓ Pass

If you want to check with other color combinations, try the [Color Contrast Checker](#).

Yxy 40.9068, 0.3365, 0.3265

Background



This preview shows how black text looks on a background with the Yxy color 40.9068, 0.3365, 0.3265.



This preview shows how white text looks on a background with the Yxy color 40.9068, 0.3365, 0.3265.

Color Blindness Simulation

Color vision deficiency is a very complex topic, and I could not describe the different causes any better than Wikipedia does, so if you want to learn more, you should check out their [article about color blindness](#).

Dichromacy



Original Color

40.9068, 0.3365, 0.3265

Protanopia

41.1421, 0.3172, 0.3304

Deuteranopia

41.0096, 0.3344, 0.3277



Tritanopia

41.0230, 0.3294, 0.3135

Trichromacy



Original Color

40.9068, 0.3365, 0.3265

Protanomaly

41.0643, 0.3238, 0.3290

Deuteranomaly

41.1388, 0.3354, 0.3278

Tritanomaly

40.9055, 0.3321, 0.3174

Monochromacy



Original Color

40.9068, 0.3365, 0.3265

Achromatopsia

41.7885, 0.3127, 0.3290

Achromatomaly

41.3930, 0.3210, 0.3277

CSS Examples

Text

The CSS property to change the color of the text to Yxy 40.9068, 0.3365, 0.3265 is called "color". The color property can be set on classes, ids or directly on the HTML element.

This example shows how text in the color `rgb(192, 165, 167)` looks like.

```
.text, #text, p{  
    color:rgb(192, 165, 167)  
}
```

If you want to add a text shadow in that color use the text-shadow property, you can generate a text shadow directly with our [CSS Text Shadow Generator](#).

Here you see how black text with a 4 pixel rgb(192, 165, 167) colored shadow looks like.

```
.shadow{ text-shadow: 4px 4px 2px rgb(192, 165, 167) }
```

Border

The CSS property to change the border of an element to Yxy 40.9068, 0.3365, 0.3265 is called "border". The border property can be set on classes, ids or directly on the HTML element.

This example shows the color as border, it can be applied via the CSS property "border" or "border-color".

```
.border, #border, table{ border:4px solid rgb(192, 165, 167) }
```

If only the border color should be changed use the property `border-color`.

```
.border{ border-color:rgb(192, 165, 167) }
```

If you want to add a box shadow in that color use:

Here you see how a box with a 4 pixel `rgb(192, 165, 167)` colored shadow looks like.

```
.boxshadow{ -moz-box-shadow:4px 4px 4px  
4px rgb(192, 165, 167); -webkit-box-  
shadow:4px 4px 4px 4px rgb(192, 165, 167);  
box-shadow:4px 4px 4px 4px rgb(192, 165,  
167) }
```


Background

The CSS property to change the background color of an element to Yxy 40.9068, 0.3365, 0.3265 is called "background". The background property can be set on classes, ids or directly on the HTML element.

```
.background, #background, body{  
background: rgb(192, 165, 167) }
```

If only the background color should be changed can be used:

```
.background{ background-color: rgb(192,  
165, 167) }
```

This example shows the color as background, it is applied via the CSS property "background".

To optimize and compress your CSS code, you can use our [online CSS compressor and optimizer](#) based on csstidy. If you want to create a linear or radial gradient as background or border, check our [CSS Gradient Generator](#).

Hey! You found this booklet interesting? Support Converting Colors with the new Membership Option!

The pro membership hides all ads, plus gives you double the colors in the color bucket, and more awesome pro features!

[Learn more, Memberships starting at \\$2.50/m!](#)

**Follow me
on Twitter!**

@ConvertingColor