

Converting Colors

$Y_{xy}(40.9410, 0.3096, 0.3240)$

Have a look what the booklet for
Yxy(40.9410, 0.3096, 0.3240)
contains.

Yxy(40.8789, 0.3094, 0.3235)	3
<i>Conversions</i>	4
<i>Details</i>	6
<i>Harmonies</i>	12
<i>Previews</i>	24
<i>Color Blindness Simulation</i>	27
<i>CSS Examples</i>	30

Color

Yxy(40.8789, 0.3094, 0.3235)

Conversions

Conversions Part 1

Format	Color
Hex	ABABAF
RGB	171, 171, 175
RGB Percent	67%, 67%, 69%
CMY	0.3294, 0.3294, 0.3137
CMYK	0.02, 0.02, 0.00, 0.31
HSL	240°, 2%, 68%
HSV	240°, 2%, 69%
XYZ	39.0972, 40.8789, 46.3884
YIQ	171.4560, -1.2840, 1.2440

Conversions

Conversions Part 2

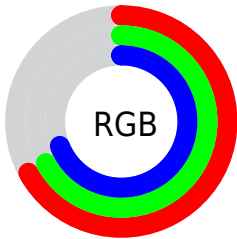
Format	Color
RYB	171, 171, 175
Decimal	11250607
CIELab	70.09, 0.77, -2.06
CIELCh	70, 2.199, 290.551
Yxy	40.8789, 0.3094, 0.3235
Android (android.graphics.Color)	4289440687 (0xFFABABAF)
YUV	171.4560, 1.7472, -0.3999
Hunter-Lab	63.9366, -2.7365, 1.7385

Details

The Yxy color **40.8789, 0.3094, 0.3235** is a light color, and the websafe version is hex **999999**. A complement of this color would be **42.7148, 0.3160, 0.3344**, and the grayscale version is **40.9591, 0.3127, 0.3290**.

A 20% lighter version of the original color is **76.2746, 0.3102, 0.3248**, and **18.5457, 0.3081, 0.3214** is the 20% darker color. If you saturate the color by 10%, you get **32.8685, 0.2937, 0.2974**, and if you desaturate by 10%, it is **50.0270, 0.3231, 0.3463**.

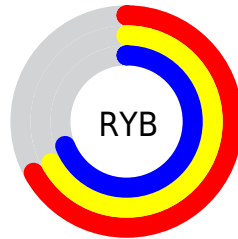
Distribution



Red (67%)

Green (67%)

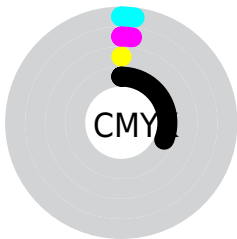
Blue (69%)



Red (67%)

Yellow (67%)

Blue (69%)

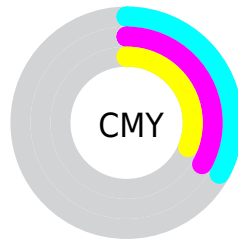


Cyan (2%)

Magenta (2%)

Yellow (0%)

Black (31%)



Cyan (33%)

Magenta (33%)

Yellow (31%)

Brightness & Saturation Gradients

These gradients show how the Yxy color 40.8789, 0.3094, 0.3235 changes by changing the brightness by 10 percent. The first figure shows a shift by +10% for each color and the second figure -10%.

Similar to the brightness gradients but the following saturation gradients show a change of the Yxy color 40.8789, 0.3094, 0.3235 by changing the saturation by 10% instead.

■ 40.8789, 0.3094,
0.3235

■ 40.8789, 0.3094,
0.3235

349.8142, 0.3111,
0.3263

■ 28.2245, 0.3090,
0.3228

■ 76.5000, 0.3100,
0.3245

■ 18.4949, 0.3084,
0.3218

100.2355, 0.3103,
0.3249

■ 11.3059, 0.3076,
0.3206

128.4335, 0.3105,
0.3252

■ 6.2730, 0.3065,
0.3187

161.4783, 0.3106,
0.3255

■ 3.0118, 0.3048,
0.3159

199.7544, 0.3108,
0.3258

■ 1.1379, 0.3017,
0.3110

243.6462, 0.3109,

■ 0.0101, 0.1469,

0.3260

0.0521

293.5380, 0.3110,
0.3262

0.0000, 0.0000,
0.0000

40.8789, 0.3094,
0.3235

40.8789, 0.3094,
0.3235

32.8685, 0.2937,
0.2974

50.0270, 0.3231,
0.3463

25.9463, 0.2759,
0.2680

60.3493, 0.3350,
0.3660

20.0671, 0.2563,
0.2356

71.8872, 0.3452,
0.3830

15.1802, 0.2355,
0.2010

84.6785, 0.3540,
0.3975

11.2311, 0.2142,
0.1659

95.8753, 0.3603,
0.4076

■ 8.1596, 0.1940,
0.1324

■ 5.8988, 0.1763,
0.1032

■ 4.3722, 0.1627,
0.0808

■ 3.4887, 0.1541,
0.0666

Harmonies

Analogous

The Analogous color harmony consists of three colors that are next to each other on the color wheel.



40.8789, 0.3072, 0.3242



40.8789, 0.3094, 0.3235



40.8789, 0.3125, 0.3243

Triad

The Triadic color harmony groups three colors that are evenly spaced from another and form a triangle on the color wheel.



40.8789, 0.3094, 0.3235



40.8789, 0.3190, 0.3319



40.8789, 0.3098, 0.3317

Complementary

The Complementary color scheme is a pair of colors which are on the opposite of each other on the color wheel.



40.8789, 0.3094, 0.3235



42.7148, 0.3160, 0.3344

Split Complementary

Split-complementary colors differ from the complementary color scheme. The scheme consists of three colors, the original color and two neighbors of the complement color.



40.8789, 0.3129, 0.3338



40.8789, 0.3094, 0.3235



40.8789, 0.3183, 0.3339

Square

The Square scheme is like the rectangle color scheme, but the four colors are evenly spaced on the color wheel.



40.8789, 0.3094, 0.3235



40.8789, 0.3181, 0.3291



40.8789, 0.3160, 0.3346



40.8789, 0.3074, 0.3289

Rectangle

The Rectangle color scheme consists of four colors that form a rectangle on the color wheel.



40.8789, 0.3094, 0.3235



40.8789, 0.3147, 0.3256



40.8789, 0.3160, 0.3346



40.8789, 0.3108, 0.3325

Sweetspot

The Sweet Spot groups the original color and five complimentary colors.



40.8806, 0.3094, 0.3235



75.1783, 0.3113, 0.3266



42.4146, 0.3092, 0.3290



16.7282, 0.3113, 0.3267



89.0005, 0.3127, 0.3290



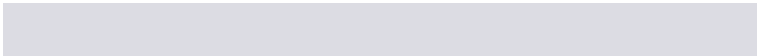
17.0645, 0.3127, 0.3290

Same Dimension

The Same Dimension uses a secret algorithm to generate beautiful new colors.



40.8806, 0.3094, 0.3235



72.0445, 0.3083, 0.3216



41.1059, 0.3112, 0.3235



8.7553, 0.3073, 0.3200



2.2190, 0.1501, 0.0601



0.0620, 0.1506, 0.0603

Inverse Universe

The Inverse Universe completely reimagines the original color for something new.



41.3354, 0.3130, 0.3236



73.1258, 0.3131, 0.3218



42.4861, 0.3142, 0.3345



8.9170, 0.3131, 0.3202



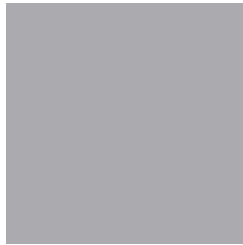
8.7308, 0.3216, 0.1545



0.2430, 0.3213, 0.1544

Previews

White Background



This preview shows how the Yxy color 40.8789, 0.3094, 0.3235 looks on a white background.

Color Contrast Check

Large Text (above 18pt) WCAG AA × Fail

Any Text WCAG AA × Fail

Large Text (above 18pt) WCAG AAA × Fail

Any Text WCAG AAA × Fail

Black Background



This preview shows how the Yxy color 40.8789, 0.3094, 0.3235 looks on a black background.

Color Contrast Check

Large Text (above 18pt) WCAG AA ✓ Pass

Any Text WCAG AA ✓ Pass

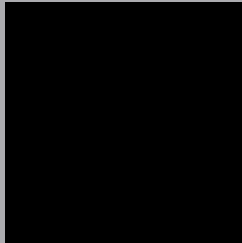
Large Text (above 18pt) WCAG AAA ✓ Pass

Any Text WCAG AAA ✓ Pass

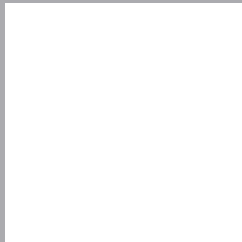
If you want to check with other color combinations, try the [Color Contrast Checker](#).

Yxy 40.8789, 0.3094, 0.3235

Background



This preview shows how black text looks on a background with the Yxy color 40.8789, 0.3094, 0.3235.

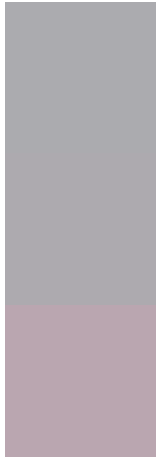


This preview shows how white text looks on a background with the Yxy color 40.8789, 0.3094, 0.3235.

Color Blindness Simulation

Color vision deficiency is a very complex topic, and I could not describe the different causes any better than Wikipedia does, so if you want to learn more, you should check out their [article about color blindness](#).

Dichromacy



Original Color

40.8789, 0.3094, 0.3235

Protanopia

40.7288, 0.3112, 0.3222

Deuteranopia

40.8461, 0.3226, 0.3158



Tritanopia

40.9390, 0.3038, 0.3114

Trichromacy



Original Color

40.8789, 0.3094, 0.3235

Protanomaly

40.6153, 0.3103, 0.3221

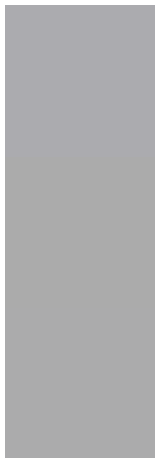
Deuteranomaly

40.9636, 0.3178, 0.3183

Tritanomaly

40.8154, 0.3062, 0.3154

Monochromacy



Original Color

40.8789, 0.3094, 0.3235

Achromatopsia

40.7240, 0.3127, 0.3290

Achromatomaly

40.7623, 0.3119, 0.3276

CSS Examples

Text

The CSS property to change the color of the text to Yxy 40.8789, 0.3094, 0.3235 is called "color". The color property can be set on classes, ids or directly on the HTML element.

This example shows how text in the color `rgb(171, 171, 175)` looks like.

```
.text, #text, p{  
    color:rgb(171, 171, 175)  
}
```

If you want to add a text shadow in that color use the text-shadow property, you can generate a text shadow directly with our [CSS Text Shadow Generator](#).

Here you see how black text with a 4 pixel rgb(171, 171, 175) colored shadow looks like.

```
.shadow{ text-shadow: 4px 4px 2px rgb(171, 171, 175) }
```

Border

The CSS property to change the border of an element to Yxy 40.8789, 0.3094, 0.3235 is called "border". The border property can be set on classes, ids or directly on the HTML element.

This example shows the color as border, it can be applied via the CSS property "border" or "border-color".

```
.border, #border, table{ border:4px solid rgb(171, 171, 175) }
```

If only the border color should be changed use the property `border-color`.

```
.border{ border-color:rgb(171, 171, 175) }
```

If you want to add a box shadow in that color use:

Here you see how a box with a 4 pixel `rgb(171, 171, 175)` colored shadow looks like.

```
.boxshadow{ -moz-box-shadow:4px 4px 4px  
4px rgb(171, 171, 175); -webkit-box-  
shadow:4px 4px 4px 4px rgb(171, 171, 175);  
box-shadow:4px 4px 4px 4px rgb(171, 171,  
175) }
```


Background

The CSS property to change the background color of an element to Yxy 40.8789, 0.3094, 0.3235 is called "background". The background property can be set on classes, ids or directly on the HTML element.

```
.background, #background, body{  
background: rgb(171, 171, 175) }
```

If only the background color should be changed can be used:

```
.background{ background-color: rgb(171,  
171, 175) }
```

This example shows the color as background, it is applied via the CSS property "background".

To optimize and compress your CSS code, you can use our [online CSS compressor and optimizer](#) based on csstidy. If you want to create a linear or radial gradient as background or border, check our [CSS Gradient Generator](#).

Hey! You found this booklet interesting? Support Converting Colors with the new Membership Option!

The pro membership hides all ads, plus gives you double the colors in the color bucket, and more awesome pro features!

[Learn more, Memberships starting at \\$2.50/m!](#)

**Follow me
on Twitter!**

@ConvertingColor