

Converting Colors

$Y_{xy}(40.9660, 0.3551, 0.3612)$

Have a look what the booklet for
Yxy(40.9660, 0.3551, 0.3612)
contains.

Yxy(40.9660, 0.3551, 0.3612)	3
Conversions	4
Details	6
Harmonies	12
Previews	24
Color Blindness Simulation	27
CSS Examples	30

Color

Yxy(40.9660, 0.3551, 0.3612)

Conversions

Conversions Part 1

Format	Color
Hex	BEA890
RGB	190, 168, 144
RGB Percent	75%, 66%, 56%
CMY	0.2549, 0.3412, 0.4352
CMYK	0.00, 0.12, 0.24, 0.25
HSL	31°, 26%, 65%
HSV	31°, 24%, 75%
XYZ	40.2742, 40.9660, 32.1762
YIQ	171.8420, 20.8160, -2.8000

Conversions

Conversions Part 2

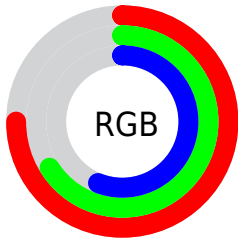
Format	Color
R_{YB}	186, 190, 144
Decimal	12494992
CIE _{Lab}	70.15, 4.20, 15.32
CIE _{LCh}	70, 15.889, 74.660
Yxy	40.9660, 0.3551, 0.3612
Android (android.graphics.Color)	4290685072 (0xFFBEA890)
YUV	171.8420, -13.7261, 15.9246
Hunter-Lab	64.0047, 0.3107, 14.9972

Details

The Yxy color **40.9660, 0.3551, 0.3612** is a light color, and the websafe version is hex **CC9999**. A complement of this color would be **36.9298, 0.2746, 0.2945**, and the grayscale version is **41.2355, 0.3127, 0.3290**.

A 20% lighter version of the original color is **76.6267, 0.3472, 0.3550**, and **18.5332, 0.3673, 0.3696** is the 20% darker color. If you saturate the color by 10%, you get **37.1942, 0.3765, 0.3752**, and if you desaturate by 10%, it is **45.0741, 0.3360, 0.3475**.

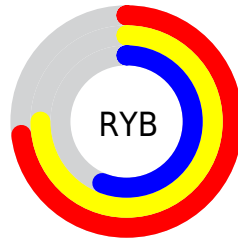
Distribution



Red (75%)

Green (66%)

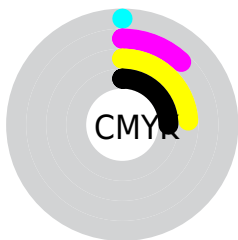
Blue (56%)



Red (73%)

Yellow (75%)

Blue (56%)

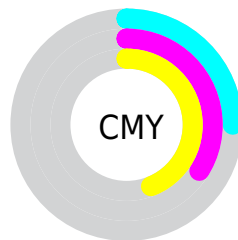


Cyan (0%)

Magenta (12%)

Yellow (24%)

Black (25%)



Cyan (25%)


Magenta (34%)


Yellow (44%)

Brightness & Saturation Gradients


These gradients show how the Yxy color 40.9660, 0.3551, 0.3612 changes by changing the brightness by 10 percent. The first figure shows a shift by +10% for each color and the second figure -10%.


Similar to the brightness gradients but the following saturation gradients show a change of the Yxy color 40.9660, 0.3551, 0.3612 by changing the saturation by 10% instead.


 40.9660, 0.3551,
0.3612


 40.9660, 0.3551,
0.3612


350.1785, 0.3334,
0.3450

 28.2925, 0.3607,
0.3653


 76.6323, 0.3471,
0.3553

 18.5463, 0.3679,
0.3704


 100.3939, 0.3441,
0.3531

 11.3429, 0.3777,
0.3773


128.6203, 0.3416,
0.3512

 6.2980, 0.3915,
0.3868

161.6959, 0.3395,
0.3496

 3.0271, 0.4124,
0.4006

200.0051, 0.3377,
0.3482

 1.1459, 0.4835,
0.4558

243.9324, 0.3360,

 0.0168, 0.8757,

0.3470

0.1243

293.8620, 0.3346,
0.3459

0.0000, 0.0000,
0.0000

40.9660, 0.3551,
0.3612

40.9660, 0.3551,
0.3612

37.1942, 0.3765,
0.3752

45.0741, 0.3360,
0.3475

33.7434, 0.4000,
0.3888

49.5220, 0.3192,
0.3343

30.6053, 0.4254,
0.4013

54.3204, 0.3044,
0.3219

27.7689, 0.4518,
0.4115

59.4776, 0.2915,
0.3105

25.2224, 0.4779,
0.4183

65.0018, 0.2802,
0.2999

■ 22.9527, 0.5024,
0.4204

■ 70.7046, 0.2719,
0.2933

■ 20.9451, 0.5235,
0.4172

■ 75.6813, 0.2729,
0.3035

■ 19.8886, 0.5347,
0.4137

■ 80.9227, 0.2738,
0.3135

■ 86.4326, 0.2747,
0.3234

Harmonies

Analogous

The Analogous color harmony consists of three colors that are next to each other on the color wheel.



40.9660, 0.3584, 0.3447



40.9660, 0.3551, 0.3612



40.9660, 0.3401, 0.3698

Triad

The Triadic color harmony groups three colors that are evenly spaced from another and form a triangle on the color wheel.



40.9660, 0.3551, 0.3612



40.9660, 0.2775, 0.3315



40.9660, 0.3059, 0.2945

Complementary

The Complementary color scheme is a pair of colors which are on the opposite of each other on the color wheel.



40.9660, 0.3551, 0.3612



36.9298, 0.2746, 0.2945

Split Complementary

Split-complementary colors differ from the complementary color scheme. The scheme consists of three colors, the original color and two neighbors of the complement color.



40.9660, 0.2850, 0.2903



40.9660, 0.3551, 0.3612



40.9660, 0.2691, 0.3106

Square

The Square scheme is like the rectangle color scheme, but the four colors are evenly spaced on the color wheel.



40.9660, 0.3551, 0.3612



40.9660, 0.2953, 0.3525



40.9660, 0.2717, 0.2958



40.9660, 0.3295, 0.3070

Rectangle

The Rectangle color scheme consists of four colors that form a rectangle on the color wheel.



40.9660, 0.3551, 0.3612



40.9660, 0.3259, 0.3692



40.9660, 0.2717, 0.2958



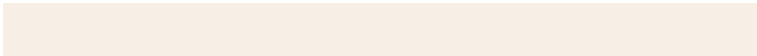
40.9660, 0.2984, 0.2921

Sweetspot

The Sweet Spot groups the original color and five complimentary colors.



40.9679, 0.3551, 0.3612



87.3241, 0.3238, 0.3381



33.6619, 0.3389, 0.2993



19.0661, 0.3249, 0.3388



97.7402, 0.3127, 0.3290



20.4902, 0.3127, 0.3290

Same Dimension

The Same Dimension uses a secret algorithm to generate beautiful new colors.



40.9679, 0.3551, 0.3612



70.5591, 0.3661, 0.3686



49.6941, 0.3481, 0.3888



10.3373, 0.3276, 0.3410



13.3817, 0.5328, 0.4152



0.6545, 0.4986, 0.4423

Inverse Universe

The Inverse Universe completely reimagines the original color for something new.



36.9298, 0.2746, 0.2945



61.9874, 0.2660, 0.2858



29.6697, 0.2726, 0.2616



9.9582, 0.2984, 0.3167



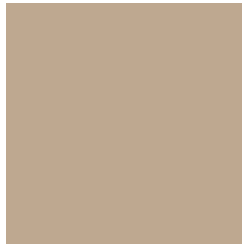
7.5930, 0.1758, 0.1527



0.4285, 0.1883, 0.1978

Previews

White Background



This preview shows how the Yxy color 40.9660, 0.3551, 0.3612 looks on a white background.

Color Contrast Check

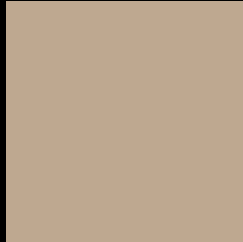
Large Text (above 18pt) WCAG AA × Fail

Any Text WCAG AA × Fail

Large Text (above 18pt) WCAG AAA × Fail

Any Text WCAG AAA × Fail

Black Background



This preview shows how the Yxy color 40.9660, 0.3551, 0.3612 looks on a black background.

Color Contrast Check

Large Text (above 18pt) WCAG AA ✓ Pass

Any Text WCAG AA ✓ Pass

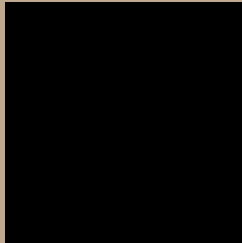
Large Text (above 18pt) WCAG AAA ✓ Pass

Any Text WCAG AAA ✓ Pass

If you want to check with other color combinations, try the [Color Contrast Checker](#).

Yxy 40.9660, 0.3551, 0.3612

Background



This preview shows how black text looks on a background with the Yxy color 40.9660, 0.3551, 0.3612.



This preview shows how white text looks on a background with the Yxy color 40.9660, 0.3551, 0.3612.

Color Blindness Simulation

Color vision deficiency is a very complex topic, and I could not describe the different causes any better than Wikipedia does, so if you want to learn more, you should check out their [article about color blindness](#).

Dichromacy



Original Color

40.9660, 0.3551, 0.3612

Protanopia

41.0249, 0.3437, 0.3634

Deuteranopia

40.9604, 0.3630, 0.3552



Tritanopia

40.7983, 0.3305, 0.3123

Trichromacy



Original Color

40.9660, 0.3551, 0.3612

Protanomaly

40.9841, 0.3478, 0.3631

Deuteranomaly

40.9189, 0.3597, 0.3568

Tritanomaly

40.9281, 0.3402, 0.3304

Monochromacy



Original Color

40.9660, 0.3551, 0.3612

Achromatopsia

41.2543, 0.3127, 0.3290

Achromatomaly

41.3182, 0.3277, 0.3413

CSS Examples

Text

The CSS property to change the color of the text to Yxy 40.9660, 0.3551, 0.3612 is called "color". The color property can be set on classes, ids or directly on the HTML element.

This example shows how text in the color `rgb(190, 168, 144)` looks like.

```
.text, #text, p{  
    color:rgb(190, 168, 144)  
}
```

If you want to add a text shadow in that color use the text-shadow property, you can generate a text shadow directly with our [CSS Text Shadow Generator](#).

Here you see how black text with a 4 pixel rgb(190, 168, 144) colored shadow looks like.

```
.shadow{ text-shadow: 4px 4px 2px rgb(190, 168, 144) }
```

Border

The CSS property to change the border of an element to Yxy 40.9660, 0.3551, 0.3612 is called "border". The border property can be set on classes, ids or directly on the HTML element.

This example shows the color as border, it can be applied via the CSS property "border" or "border-color".

```
.border, #border, table{ border:4px solid rgb(190, 168, 144) }
```

If only the border color should be changed use the property `border-color`.

```
.border{ border-color:rgb(190, 168, 144) }
```

If you want to add a box shadow in that color use:

Here you see how a box with a 4 pixel `rgb(190, 168, 144)` colored shadow looks like.

```
.boxshadow{ -moz-box-shadow:4px 4px 4px  
4px rgb(190, 168, 144); -webkit-box-  
shadow:4px 4px 4px 4px rgb(190, 168, 144);  
box-shadow:4px 4px 4px 4px rgb(190, 168,  
144) }
```


Background

The CSS property to change the background color of an element to Yxy 40.9660, 0.3551, 0.3612 is called "background". The background property can be set on classes, ids or directly on the HTML element.

```
.background, #background, body{  
background: rgb(190, 168, 144) }
```

If only the background color should be changed can be used:

```
.background{ background-color: rgb(190,  
168, 144) }
```

This example shows the color as background, it is applied via the CSS property "background".

To optimize and compress your CSS code, you can use our [online CSS compressor and optimizer](#) based on csstidy. If you want to create a linear or radial gradient as background or border, check our [CSS Gradient Generator](#).

Hey! You found this booklet interesting? Support Converting Colors with the new Membership Option!

The pro membership hides all ads, plus gives you double the colors in the color bucket, and more awesome pro features!

[Learn more, Memberships starting at \\$2.50/m!](#)

**Follow me
on Twitter!**

@ConvertingColor