

Converting Colors

$Yxy(41.1260, 0.3621, 0.3302)$

Have a look what the booklet for
Yxy(41.1260, 0.3621, 0.3302)
contains.

Yxy(41.2001, 0.3619, 0.3304)	3
<i>Conversions</i>	4
<i>Details</i>	6
<i>Harmonies</i>	12
<i>Previews</i>	24
<i>Color Blindness Simulation</i>	27
<i>CSS Examples</i>	30

Color

Yxy(41.2001, 0.3619, 0.3304)

Conversions

Conversions Part 1

Format	Color
Hex	D1A09F
RGB	209, 160, 159
RGB Percent	82%, 63%, 62%
CMY	0.1803, 0.3726, 0.3765
CMYK	0.00, 0.23, 0.24, 0.18
HSL	1°, 35%, 72%
HSV	1°, 24%, 82%
XYZ	45.1281, 41.2001, 38.3695
YIQ	174.5370, 29.5250, 10.0770

Conversions

Conversions Part 2

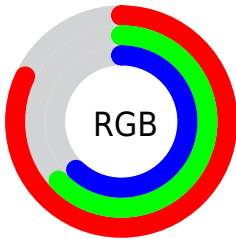
Format	Color
R _Y B	209, 160, 159
Decimal	13738143
CIE Lab	70.32, 18.02, 7.55
CIE LCh	70, 19.536, 22.749
Yxy	41.2001, 0.3619, 0.3304
Android (android.graphics.Color)	4291928223 (0xFFD1A09F)
YUV	174.5370, -7.6597, 30.2241
Hunter-Lab	64.1873, 13.1700, 9.4891

Details

The Yxy color $41.2001, 0.3619, 0.3304$ is a light color, and the websafe version is hex `CC9999`. A complement of this color would be $57.0968, 0.2775, 0.3276$, and the grayscale version is $42.6484, 0.3127, 0.3290$.

A 20% lighter version of the original color is $74.7159, 0.3432, 0.3301$, and $18.6779, 0.3771, 0.3292$ is the 20% darker color. If you saturate the color by 10%, you get $34.0108, 0.3913, 0.3310$, and if you desaturate by 10%, it is $49.6859, 0.3382, 0.3298$.

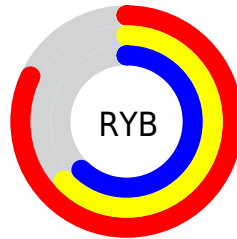
Distribution



Red (82%)

Green (63%)

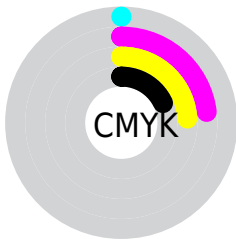
Blue (62%)



Red (82%)

Yellow (63%)

Blue (62%)

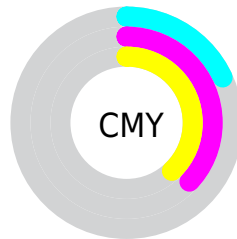


Cyan (0%)

Magenta (23%)

Yellow (24%)

Black (18%)



Cyan (18%)


Magenta (37%)

Yellow (38%)

Brightness & Saturation Gradients


These gradients show how the Yxy color 41.2001, 0.3619, 0.3304 changes by changing the brightness by 10 percent. The first figure shows a shift by +10% for each color and the second figure -10%.


Similar to the brightness gradients but the following saturation gradients show a change of the Yxy color 41.2001, 0.3619, 0.3304 by changing the saturation by 10% instead.


 41.2001, 0.3619,
0.3304

 41.2001, 0.3619,
0.3304


351.1562, 0.3366,
0.3301

 28.4755, 0.3684,
0.3303


 76.9876, 0.3525,
0.3304

 18.6844, 0.3770,
0.3302


 100.8192, 0.3491,
0.3304

 11.4424, 0.3886,
0.3298


129.1219, 0.3462,
0.3303

 6.3653, 0.4052,
0.3290

162.2802, 0.3437,
0.3303

 3.0684, 0.4309,
0.3270

200.6783, 0.3415,
0.3302

 1.1676, 0.4784,
0.3234

244.7008, 0.3397,

 0.0350, 0.9312,

0.3302

0.0688

294.7320, 0.3381,
0.3301

0.0000, 0.0000,
0.0000

41.2001, 0.3619,
0.3304

41.2001, 0.3619,
0.3304

34.0108, 0.3913,
0.3310

49.6859, 0.3382,
0.3298

28.0487, 0.4272,
0.3317

59.5214, 0.3191,
0.3292

23.2471, 0.4693,
0.3322

70.7641, 0.3039,
0.3287

19.5304, 0.5161,
0.3325

83.4661, 0.2916,
0.3282

16.8142, 0.5629,
0.3324

92.2993, 0.2855,
0.3289

■ 15.0016, 0.6030,
0.3320

■ 13.9766, 0.6294,
0.3311

■ 13.6504, 0.6388,
0.3310

Harmonies

Analogous

The Analogous color harmony consists of three colors that are next to each other on the color wheel.



41.2001, 0.3405, 0.3076



41.2001, 0.3619, 0.3304



41.2001, 0.3694, 0.3539

Triad

The Triadic color harmony groups three colors that are evenly spaced from another and form a triangle on the color wheel.



41.2001, 0.3619, 0.3304



41.2001, 0.3114, 0.3724



41.2001, 0.2659, 0.2854

Complementary

The Complementary color scheme is a pair of colors which are on the opposite of each other on the color wheel.



41.2001, 0.3619, 0.3304



57.0968, 0.2775, 0.3276

Split Complementary

Split-complementary colors differ from the complementary color scheme. The scheme consists of three colors, the original color and two neighbors of the complement color.



41.2001, 0.2591, 0.3003



41.2001, 0.3619, 0.3304



41.2001, 0.2845, 0.3515

Square

The Square scheme is like the rectangle color scheme, but the four colors are evenly spaced on the color wheel.



41.2001, 0.3619, 0.3304



41.2001, 0.3394, 0.3798



41.2001, 0.2657, 0.3244



41.2001, 0.2849, 0.2822

Rectangle

The Rectangle color scheme consists of four colors that form a rectangle on the color wheel.



41.2001, 0.3619, 0.3304



41.2001, 0.3655, 0.3671



41.2001, 0.2657, 0.3244



41.2001, 0.2622, 0.2891

Sweetspot

The Sweet Spot groups the original color and five complimentary colors.



41.2020, 0.3619, 0.3304



88.2466, 0.3247, 0.3294



42.9155, 0.3162, 0.2708



18.6825, 0.3258, 0.3294



0.0000, 0.0000, 0.0000



21.4041, 0.3127, 0.3290

Same Dimension

The Same Dimension uses a secret algorithm to generate beautiful new colors.



41.2020, 0.3619, 0.3304



58.2742, 0.3770, 0.3308



50.6940, 0.3549, 0.3608



11.8457, 0.3290, 0.3295



8.4312, 0.6384, 0.3313



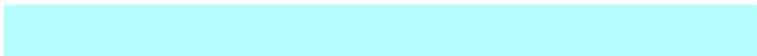
0.4851, 0.6331, 0.3355

Inverse Universe

The Inverse Universe completely reimagines the original color for something new.



57.0968, 0.2775, 0.3276



87.6252, 0.2704, 0.3273



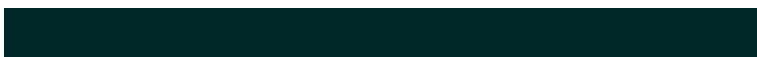
45.9136, 0.2749, 0.2950



13.3646, 0.2983, 0.3285



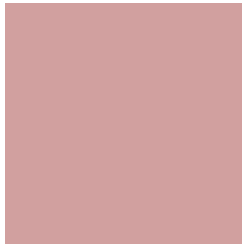
29.7189, 0.2230, 0.3227



1.6749, 0.2233, 0.3239

Previews

White Background



This preview shows how the Yxy color 41.2001, 0.3619, 0.3304 looks on a white background.

Color Contrast Check

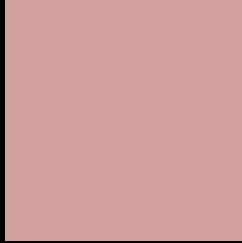
Large Text (above 18pt) WCAG AA × Fail

Any Text WCAG AA × Fail

Large Text (above 18pt) WCAG AAA × Fail

Any Text WCAG AAA × Fail

Black Background



This preview shows how the Yxy color 41.2001, 0.3619, 0.3304 looks on a black background.

Color Contrast Check

Large Text (above 18pt) WCAG AA ✓ Pass

Any Text WCAG AA ✓ Pass

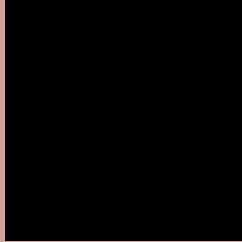
Large Text (above 18pt) WCAG AAA ✓ Pass

Any Text WCAG AAA ✓ Pass

If you want to check with other color combinations, try the [Color Contrast Checker](#).

Yxy 41.2001, 0.3619, 0.3304

Background



This preview shows how black text looks on a background with the Yxy color 41.2001, 0.3619, 0.3304.



This preview shows how white text looks on a background with the Yxy color 41.2001, 0.3619, 0.3304.

Color Blindness Simulation

Color vision deficiency is a very complex topic, and I could not describe the different causes any better than Wikipedia does, so if you want to learn more, you should check out their [article about color blindness](#).

Dichromacy



Original Color

41.2001, 0.3619, 0.3304

Protanopia

41.1895, 0.3233, 0.3372

Deuteranopia

41.2104, 0.3466, 0.3396



Tritanopia

41.0576, 0.3526, 0.3143

Trichromacy



Original Color

41.2001, 0.3619, 0.3304

Protanomaly

41.1006, 0.3369, 0.3344

Deuteranomaly

41.1617, 0.3519, 0.3369

Tritanomaly

41.2511, 0.3562, 0.3204

Monochromacy



Original Color

41.2001, 0.3619, 0.3304

Achromatopsia

42.8690, 0.3127, 0.3290

Achromatomaly

42.1788, 0.3292, 0.3304

CSS Examples

Text

The CSS property to change the color of the text to Yxy 41.2001, 0.3619, 0.3304 is called "color". The color property can be set on classes, ids or directly on the HTML element.

This example shows how text in the color `rgb(209, 160, 159)` looks like.

```
.text, #text, p{  
    color:rgb(209, 160, 159)  
}
```

If you want to add a text shadow in that color use the text-shadow property, you can generate a text shadow directly with our [CSS Text Shadow Generator](#).

Here you see how black text with a 4 pixel rgb(209, 160, 159) colored shadow looks like.

```
.shadow{ text-shadow: 4px 4px 2px rgb(209, 160, 159) }
```

Border

The CSS property to change the border of an element to Yxy 41.2001, 0.3619, 0.3304 is called "border". The border property can be set on classes, ids or directly on the HTML element.

This example shows the color as border, it can be applied via the CSS property "border" or "border-color".

```
.border, #border, table{ border:4px solid rgb(209, 160, 159) }
```

If only the border color should be changed use the property border-color.

```
.border{ border-color:rgb(209, 160, 159) }
```

If you want to add a box shadow in that color use:

Here you see how a box with a 4 pixel rgb(209, 160, 159) colored shadow looks like.

```
.boxshadow{ -moz-box-shadow:4px 4px 4px  
4px rgb(209, 160, 159); -webkit-box-  
shadow:4px 4px 4px 4px rgb(209, 160, 159);  
box-shadow:4px 4px 4px 4px rgb(209, 160,  
159) }
```


Background

The CSS property to change the background color of an element to Yxy 41.2001, 0.3619, 0.3304 is called "background". The background property can be set on classes, ids or directly on the HTML element.

```
.background, #background, body{  
background: rgb(209, 160, 159) }
```

If only the background color should be changed can be used:

```
.background{ background-color: rgb(209,  
160, 159) }
```

This example shows the color as background, it is applied via the CSS property "background".

To optimize and compress your CSS code, you can use our [online CSS compressor and optimizer](#) based on csstidy. If you want to create a linear or radial gradient as background or border, check our [CSS Gradient Generator](#).

Hey! You found this booklet interesting? Support Converting Colors with the new Membership Option!

The pro membership hides all ads, plus gives you double the colors in the color bucket, and more awesome pro features!

[Learn more, Memberships starting at \\$2.50/m!](#)

**Follow me
on Twitter!**

@ConvertingColor