

Converting Colors

$Yxy(41.2179, 0.3503, 0.3304)$

Have a look what the booklet for
Yxy(41.2179, 0.3503, 0.3304)
contains.

Yxy(41.2205, 0.3503, 0.3304)	3
<i>Conversions</i>	4
<i>Details</i>	6
<i>Harmonies</i>	12
<i>Previews</i>	24
<i>Color Blindness Simulation</i>	27
<i>CSS Examples</i>	30

Color

Yxy(41.2205, 0.3503, 0.3304)

Conversions

Conversions Part 1

Format	Color
Hex	C9A3A2
RGB	201, 163, 162
RGB Percent	79%, 64%, 64%
CMY	0.2118, 0.3607, 0.3647
CMYK	0.00, 0.19, 0.19, 0.21
HSL	2°, 27%, 71%
HSV	2°, 19%, 79%
XYZ	43.7032, 41.2205, 39.8357
YIQ	174.2480, 22.9690, 7.7450

Conversions

Conversions Part 2

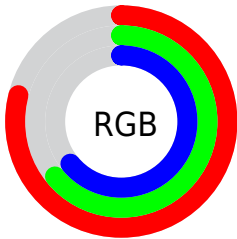
Format	Color
R _Y B	201, 163, 162
Decimal	13214626
CIE Lab	70.33, 13.81, 5.80
CIE LCh	70, 14.975, 22.795
Yxy	41.2205, 0.3503, 0.3304
Android (android.graphics.Color)	4291404706 (0xFFC9A3A2)
YUV	174.2480, -6.0383, 23.4615
Hunter-Lab	64.2032, 9.1496, 8.1550

Details

The Yxy color **41.2205, 0.3503, 0.3304** is a light color, and the websafe version is hex **CC9999**. A complement of this color would be **53.1957, 0.2839, 0.3276**, and the grayscale version is **42.4848, 0.3127, 0.3290**.

A 20% lighter version of the original color is **76.4126, 0.3406, 0.3301**, and **18.6057, 0.3620, 0.3309** is the 20% darker color. If you saturate the color by 10%, you get **34.1405, 0.3768, 0.3312**, and if you desaturate by 10%, it is **49.4948, 0.3289, 0.3297**.

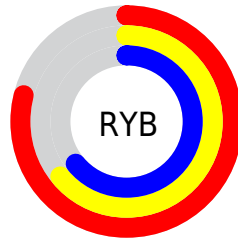
Distribution



Red (79%)

Green (64%)

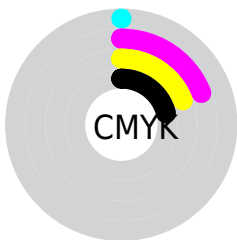
Blue (64%)



Red (79%)

Yellow (64%)

Blue (64%)

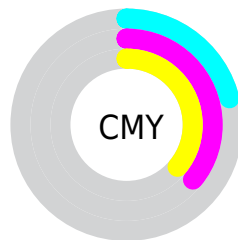


Cyan (0%)

Magenta (19%)

Yellow (19%)

Black (21%)



Cyan (21%)


Magenta (36%)


Yellow (36%)

Brightness & Saturation Gradients

These gradients show how the Yxy color 41.2205, 0.3503, 0.3304 changes by changing the brightness by 10 percent. The first figure shows a shift by +10% for each color and the second figure -10%.


Similar to the brightness gradients but the following saturation gradients show a change of the Yxy color 41.2205, 0.3503, 0.3304 by changing the saturation by 10% instead.

 41.2205, 0.3503,
0.3304


 41.2205, 0.3503,
0.3304


351.2413, 0.3310,
0.3299

 28.4914, 0.3553,
0.3304


 77.0185, 0.3432,
0.3303

 18.6964, 0.3618,
0.3304


 100.8562, 0.3405,
0.3302

 11.4511, 0.3706,
0.3303


129.1656, 0.3383,
0.3302

 6.3711, 0.3834,
0.3300

162.3311, 0.3364,
0.3301

 3.0720, 0.4031,
0.3292

200.7370, 0.3348,
0.3301

 1.1695, 0.4384,
0.3269

244.7677, 0.3334,

 0.0365, 0.9105,

0.3300

0.0895

294.8077, 0.3321,
0.3300

0.0000, 0.0000,
0.0000

41.2205, 0.3503,
0.3304

41.2205, 0.3503,
0.3304

34.1405, 0.3768,
0.3312

49.4948, 0.3289,
0.3297

28.1945, 0.4095,
0.3320

59.0089, 0.3118,
0.3290

23.3251, 0.4485,
0.3327

69.8131, 0.2980,
0.3283

19.4681, 0.4932,
0.3332

81.9530, 0.2869,
0.3278

16.5521, 0.5404,
0.3333

91.1555, 0.2811,
0.3289

■ 14.4967, 0.5845,
0.3330

■ 13.2079, 0.6182,
0.3321

■ 12.5567, 0.6374,
0.3313

■ 12.5284, 0.6384,
0.3313

Harmonies

Analogous

The Analogous color harmony consists of three colors that are next to each other on the color wheel.



41.2205, 0.3341, 0.3126



41.2205, 0.3503, 0.3304



41.2205, 0.3561, 0.3485

Triad

The Triadic color harmony groups three colors that are evenly spaced from another and form a triangle on the color wheel.



41.2205, 0.3503, 0.3304



41.2205, 0.3119, 0.3618



41.2205, 0.2766, 0.2955

Complementary

The Complementary color scheme is a pair of colors which are on the opposite of each other on the color wheel.



41.2205, 0.3503, 0.3304



53.1957, 0.2839, 0.3276

Split Complementary

Split-complementary colors differ from the complementary color scheme. The scheme consists of three colors, the original color and two neighbors of the complement color.



41.2205, 0.2712, 0.3072



41.2205, 0.3503, 0.3304



41.2205, 0.2911, 0.3461

Square

The Square scheme is like the rectangle color scheme, but the four colors are evenly spaced on the color wheel.



41.2205, 0.3503, 0.3304



41.2205, 0.3334, 0.3677



41.2205, 0.2764, 0.3258



41.2205, 0.2914, 0.2927

Rectangle

The Rectangle color scheme consists of four colors that form a rectangle on the color wheel.



41.2205, 0.3503, 0.3304



41.2205, 0.3531, 0.3586



41.2205, 0.2764, 0.3258



41.2205, 0.2736, 0.2984

Sweetspot

The Sweet Spot groups the original color and five complimentary colors.



41.2224, 0.3503, 0.3304



89.9101, 0.3228, 0.3294



42.4427, 0.3155, 0.2821



19.0197, 0.3240, 0.3295



0.0000, 0.0000, 0.0000



21.4041, 0.3127, 0.3290

Same Dimension

The Same Dimension uses a secret algorithm to generate beautiful new colors.



41.2224, 0.3503, 0.3304



65.5892, 0.3600, 0.3307



48.5389, 0.3458, 0.3544



10.6802, 0.3289, 0.3297



7.8993, 0.6379, 0.3317



0.3897, 0.6302, 0.3378

Inverse Universe

The Inverse Universe completely reimagines the original color for something new.



53.1957, 0.2839, 0.3276



89.5582, 0.2784, 0.3273



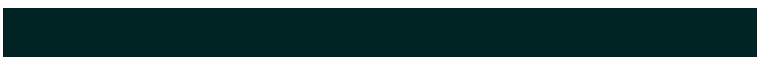
44.8823, 0.2823, 0.3022



12.0186, 0.2984, 0.3284



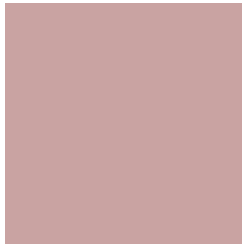
27.4398, 0.2225, 0.3209



1.3145, 0.2230, 0.3227

Previews

White Background



This preview shows how the Yxy color 41.2205, 0.3503, 0.3304 looks on a white background.

Color Contrast Check

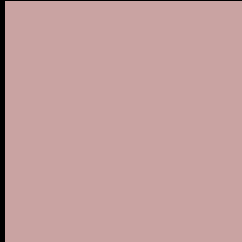
Large Text (above 18pt) WCAG AA × Fail

Any Text WCAG AA × Fail

Large Text (above 18pt) WCAG AAA × Fail

Any Text WCAG AAA × Fail

Black Background



This preview shows how the Yxy color 41.2205, 0.3503, 0.3304 looks on a black background.

Color Contrast Check

Large Text (above 18pt) WCAG AA ✓ Pass

Any Text WCAG AA ✓ Pass

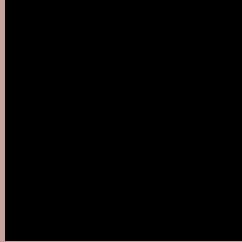
Large Text (above 18pt) WCAG AAA ✓ Pass

Any Text WCAG AAA ✓ Pass

If you want to check with other color combinations, try the [Color Contrast Checker](#).

Yxy 41.2205, 0.3503, 0.3304

Background



This preview shows how black text looks on a background with the Yxy color 41.2205, 0.3503, 0.3304.



This preview shows how white text looks on a background with the Yxy color 41.2205, 0.3503, 0.3304.

Color Blindness Simulation

Color vision deficiency is a very complex topic, and I could not describe the different causes any better than Wikipedia does, so if you want to learn more, you should check out their [article about color blindness](#).

Dichromacy



Original Color

41.2205, 0.3503, 0.3304

Protanopia

41.2630, 0.3216, 0.3345

Deuteranopia

41.1831, 0.3428, 0.3357



Tritanopia

41.1023, 0.3403, 0.3127

Trichromacy



Original Color

41.2205, 0.3503, 0.3304

Protanomaly

41.1610, 0.3321, 0.3331

Deuteranomaly

41.2192, 0.3459, 0.3343

Tritanomaly

41.2995, 0.3439, 0.3189

Monochromacy



Original Color

41.2205, 0.3503, 0.3304

Achromatopsia

42.3268, 0.3127, 0.3290

Achromatomaly

41.8421, 0.3255, 0.3290

CSS Examples

Text

The CSS property to change the color of the text to Yxy 41.2205, 0.3503, 0.3304 is called "color". The color property can be set on classes, ids or directly on the HTML element.

This example shows how text in the color `rgb(201, 163, 162)` looks like.

```
.text, #text, p{  
    color:rgb(201, 163, 162)  
}
```

If you want to add a text shadow in that color use the text-shadow property, you can generate a text shadow directly with our [CSS Text Shadow Generator](#).

Here you see how black text with a 4 pixel rgb(201, 163, 162) colored shadow looks like.

```
.shadow{ text-shadow: 4px 4px 2px rgb(201, 163, 162) }
```

Border

The CSS property to change the border of an element to Yxy 41.2205, 0.3503, 0.3304 is called "border". The border property can be set on classes, ids or directly on the HTML element.

This example shows the color as border, it can be applied via the CSS property "border" or "border-color".

```
.border, #border, table{ border:4px solid rgb(201, 163, 162) }
```

If only the border color should be changed use the property `border-color`.

```
.border{ border-color:rgb(201, 163, 162) }
```

If you want to add a box shadow in that color use:

Here you see how a box with a 4 pixel `rgb(201, 163, 162)` colored shadow looks like.

```
.boxshadow{ -moz-box-shadow:4px 4px 4px  
4px rgb(201, 163, 162); -webkit-box-  
shadow:4px 4px 4px 4px rgb(201, 163, 162);  
box-shadow:4px 4px 4px 4px rgb(201, 163,  
162) }
```


Background

The CSS property to change the background color of an element to Yxy 41.2205, 0.3503, 0.3304 is called "background". The background property can be set on classes, ids or directly on the HTML element.

```
.background, #background, body{  
background: rgb(201, 163, 162) }
```

If only the background color should be changed can be used:

```
.background{ background-color: rgb(201,  
163, 162) }
```

This example shows the color as background, it is applied via the CSS property "background".

To optimize and compress your CSS code, you can use our [online CSS compressor and optimizer](#) based on csstidy. If you want to create a linear or radial gradient as background or border, check our [CSS Gradient Generator](#).

Hey! You found this booklet interesting? Support Converting Colors with the new Membership Option!

The pro membership hides all ads, plus gives you double the colors in the color bucket, and more awesome pro features!

[Learn more, Memberships starting at \\$2.50/m!](#)

**Follow me
on Twitter!**

@ConvertingColor