

Converting Colors

$Y_{xy}(41.2196, 0.3601, 0.3384)$

Have a look what the booklet for
Yxy(41.2196, 0.3601, 0.3384)
contains.

Yxy(41.0446, 0.3603, 0.3381)	3
<i>Conversions</i>	4
<i>Details</i>	6
<i>Harmonies</i>	12
<i>Previews</i>	24
<i>Color Blindness Simulation</i>	27
<i>CSS Examples</i>	30

Color

Yxy(41.0446, 0.3603, 0.3381)

Conversions

Conversions Part 1

Format	Color
Hex	CCA29B
RGB	204, 162, 155
RGB Percent	80%, 64%, 61%
CMY	0.1999, 0.3647, 0.3923
CMYK	0.00, 0.21, 0.24, 0.20
HSL	9°, 32%, 70%
HSV	9°, 24%, 80%
XYZ	43.7396, 41.0446, 36.6136
YIQ	173.7600, 27.2790, 6.7270

Conversions

Conversions Part 2

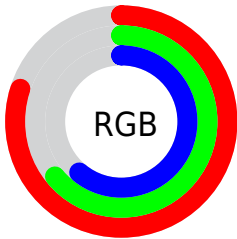
Format	Color
R _Y B	204, 163, 155
Decimal	13410971
CIE Lab	70.21, 14.44, 9.56
CIE LCh	70, 17.317, 33.489
Yxy	41.0446, 0.3603, 0.3381
Android (android.graphics.Color)	4291601051 (0xFFCCA29B)
YUV	173.7600, -9.2487, 26.5205
Hunter-Lab	64.0661, 9.7512, 10.9622

Details

The Yxy color **41.0446, 0.3603, 0.3381** is a light color, and the websafe version is hex **CC9999**. A complement of this color would be **51.2512, 0.2768, 0.3197**, and the grayscale version is **42.2364, 0.3127, 0.3290**.

A 20% lighter version of the original color is **75.4892, 0.3465, 0.3372**, and **18.5409, 0.3748, 0.3395** is the 20% darker color. If you saturate the color by 10%, you get **34.6828, 0.3877, 0.3421**, and if you desaturate by 10%, it is **48.3817, 0.3377, 0.3342**.

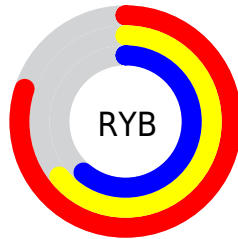
Distribution



Red (80%)

Green (64%)

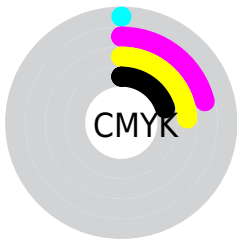
Blue (61%)



Red (80%)

Yellow (64%)

Blue (61%)

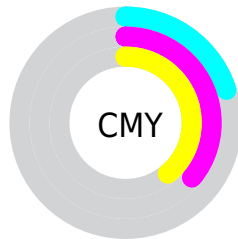


Cyan (0%)

Magenta (21%)

Yellow (24%)

Black (20%)



Cyan (20%)


Magenta (36%)


Yellow (39%)

Brightness & Saturation Gradients


These gradients show how the Yxy color 41.0446, 0.3603, 0.3381 changes by changing the brightness by 10 percent. The first figure shows a shift by +10% for each color and the second figure -10%.


Similar to the brightness gradients but the following saturation gradients show a change of the Yxy color 41.0446, 0.3603, 0.3381 by changing the saturation by 10% instead.


 41.0446, 0.3603,
0.3381

 41.0446, 0.3603,
0.3381

350.5070, 0.3358,
0.3339

 28.3539, 0.3666,
0.3390


 76.7516, 0.3512,
0.3367

 18.5926, 0.3749,
0.3402


 100.5367, 0.3479,
0.3361

 11.3763, 0.3862,
0.3415


128.7888, 0.3451,
0.3356

 6.3205, 0.4023,
0.3431

161.8922, 0.3427,
0.3352

 3.0410, 0.4273,
0.3447

200.2313, 0.3406,
0.3348

 1.1532, 0.4783,
0.3507

244.1905, 0.3388,

 0.0229, 0.9423,

0.3345

0.0577

294.1543, 0.3372,
0.3342

0.0000, 0.0000,
0.0000

41.0446, 0.3603,
0.3381

41.0446, 0.3603,
0.3381

34.6828, 0.3877,
0.3421

48.3817, 0.3377,
0.3342

29.2497, 0.4205,
0.3460

56.7268, 0.3192,
0.3304

24.7034, 0.4587,
0.3492

66.1183, 0.3040,
0.3270

20.9964, 0.5010,
0.3511

76.5906, 0.2916,
0.3239

18.0770, 0.5445,
0.3511

88.0488, 0.2823,
0.3231

■ 15.8874, 0.5843,
0.3484

■ 91.5796, 0.2827,
0.3289

■ 14.3618, 0.6146,
0.3432

■ 13.7307, 0.6276,
0.3399

Harmonies

Analogous

The Analogous color harmony consists of three colors that are next to each other on the color wheel.



41.0446, 0.3453, 0.3169



41.0446, 0.3603, 0.3381



41.0446, 0.3619, 0.3580

Triad

The Triadic color harmony groups three colors that are evenly spaced from another and form a triangle on the color wheel.



41.0446, 0.3603, 0.3381



41.0446, 0.3026, 0.3618



41.0446, 0.2760, 0.2879

Complementary

The Complementary color scheme is a pair of colors which are on the opposite of each other on the color wheel.



41.0446, 0.3603, 0.3381



51.2512, 0.2768, 0.3197

Split Complementary

Split-complementary colors differ from the complementary color scheme. The scheme consists of three colors, the original color and two neighbors of the complement color.



41.0446, 0.2657, 0.2978



41.0446, 0.3603, 0.3381



41.0446, 0.2806, 0.3406

Square

The Square scheme is like the rectangle color scheme, but the four colors are evenly spaced on the color wheel.



41.0446, 0.3603, 0.3381



41.0446, 0.3280, 0.3731



41.0446, 0.2674, 0.3168



41.0446, 0.2961, 0.2887

Rectangle

The Rectangle color scheme consists of four colors that form a rectangle on the color wheel.



41.0446, 0.3603, 0.3381



41.0446, 0.3552, 0.3679



41.0446, 0.2674, 0.3168



41.0446, 0.2713, 0.2900

Sweetspot

The Sweet Spot groups the original color and five complimentary colors.



41.0465, 0.3603, 0.3381



89.5323, 0.3245, 0.3315



40.3254, 0.3213, 0.2771



18.9791, 0.3256, 0.3318



0.0000, 0.0000, 0.0000



21.4041, 0.3127, 0.3290

Same Dimension

The Same Dimension uses a secret algorithm to generate beautiful new colors.



41.0465, 0.3603, 0.3381



62.1452, 0.3743, 0.3403



50.3366, 0.3535, 0.3677



11.4688, 0.3287, 0.3324



8.7236, 0.6258, 0.3413



0.5359, 0.5939, 0.3666

Inverse Universe

The Inverse Universe completely reimagines the original color for something new.



51.2512, 0.2768, 0.3197



81.9905, 0.2694, 0.3174



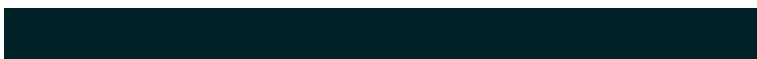
41.1952, 0.2741, 0.2870



12.4421, 0.2983, 0.3256



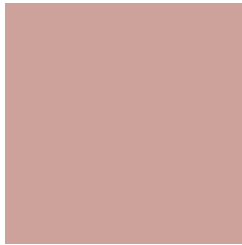
22.0857, 0.2120, 0.2833



1.2163, 0.2147, 0.2931

Previews

White Background



This preview shows how the Yxy color 41.0446, 0.3603, 0.3381 looks on a white background.

Color Contrast Check

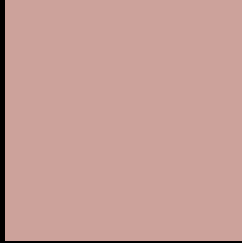
Large Text (above 18pt) WCAG AA × Fail

Any Text WCAG AA × Fail

Large Text (above 18pt) WCAG AAA × Fail

Any Text WCAG AAA × Fail

Black Background



This preview shows how the Yxy color 41.0446, 0.3603, 0.3381 looks on a black background.

Color Contrast Check

Large Text (above 18pt) WCAG AA ✓ Pass

Any Text WCAG AA ✓ Pass

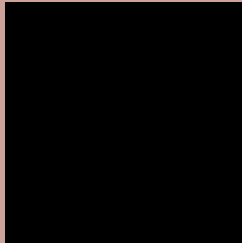
Large Text (above 18pt) WCAG AAA ✓ Pass

Any Text WCAG AAA ✓ Pass

If you want to check with other color combinations, try the [Color Contrast Checker](#).

Yxy 41.0446, 0.3603, 0.3381

Background



This preview shows how black text looks on a background with the Yxy color 41.0446, 0.3603, 0.3381.



This preview shows how white text looks on a background with the Yxy color 41.0446, 0.3603, 0.3381.

Color Blindness Simulation

Color vision deficiency is a very complex topic, and I could not describe the different causes any better than Wikipedia does, so if you want to learn more, you should check out their [article about color blindness](#).

Dichromacy



Original Color

41.0446, 0.3603, 0.3381

Protanopia

41.1289, 0.3285, 0.3441

Deuteranopia

41.2076, 0.3513, 0.3448



Tritanopia

40.8966, 0.3465, 0.3128

Trichromacy



Original Color

41.0446, 0.3603, 0.3381

Protanomaly

41.0387, 0.3394, 0.3425

Deuteranomaly

41.2491, 0.3545, 0.3434

Tritanomaly

40.8739, 0.3511, 0.3215

Monochromacy



Original Color

41.0446, 0.3603, 0.3381

Achromatopsia

42.3268, 0.3127, 0.3290

Achromatomaly

41.8538, 0.3291, 0.3330

CSS Examples

Text

The CSS property to change the color of the text to Yxy 41.0446, 0.3603, 0.3381 is called "color". The color property can be set on classes, ids or directly on the HTML element.

This example shows how text in the color `rgb(204, 162, 155)` looks like.

```
.text, #text, p{  
    color:rgb(204, 162, 155)  
}
```

If you want to add a text shadow in that color use the text-shadow property, you can generate a text shadow directly with our [CSS Text Shadow Generator](#).

Here you see how black text with a 4 pixel rgb(204, 162, 155) colored shadow looks like.

```
.shadow{ text-shadow: 4px 4px 2px rgb(204, 162, 155) }
```

Border

The CSS property to change the border of an element to Yxy 41.0446, 0.3603, 0.3381 is called "border". The border property can be set on classes, ids or directly on the HTML element.

This example shows the color as border, it can be applied via the CSS property "border" or "border-color".

```
.border, #border, table{ border:4px solid rgb(204, 162, 155) }
```

If only the border color should be changed use the property `border-color`.

```
.border{ border-color:rgb(204, 162, 155) }
```

If you want to add a box shadow in that color use:

Here you see how a box with a 4 pixel `rgb(204, 162, 155)` colored shadow looks like.

```
.boxshadow{ -moz-box-shadow:4px 4px 4px  
4px rgb(204, 162, 155); -webkit-box-  
shadow:4px 4px 4px 4px rgb(204, 162, 155);  
box-shadow:4px 4px 4px 4px rgb(204, 162,  
155) }
```


Background

The CSS property to change the background color of an element to Yxy 41.0446, 0.3603, 0.3381 is called "background". The background property can be set on classes, ids or directly on the HTML element.

```
.background, #background, body{  
background: rgb(204, 162, 155) }
```

If only the background color should be changed can be used:

```
.background{ background-color: rgb(204,  
162, 155) }
```

This example shows the color as background, it is applied via the CSS property "background".

To optimize and compress your CSS code, you can use our [online CSS compressor and optimizer](#) based on csstidy. If you want to create a linear or radial gradient as background or border, check our [CSS Gradient Generator](#).

Hey! You found this booklet interesting? Support Converting Colors with the new Membership Option!

The pro membership hides all ads, plus gives you double the colors in the color bucket, and more awesome pro features!

[Learn more, Memberships starting at \\$2.50/m!](#)

**Follow me
on Twitter!**

@ConvertingColor