

Converting Colors

$Yxy(41.3440, 0.3269, 0.3269)$

Have a look what the booklet for
Yxy(41.3440, 0.3269, 0.3269)
contains.

Yxy(41.2218, 0.3267, 0.3264)	3
Conversions	4
Details	6
Harmonies	12
Previews	24
Color Blindness Simulation	27
CSS Examples	30

Color

Yxy(41.2218, 0.3267, 0.3264)

Conversions

Conversions Part 1

Format	Color
Hex	B9A8AA
RGB	185, 168, 170
RGB Percent	73%, 66%, 67%
CMY	0.2746, 0.3411, 0.3333
CMYK	0.00, 0.09, 0.08, 0.27
HSL	353°, 11%, 69%
HSV	353°, 9%, 73%
XYZ	41.2597, 41.2218, 43.8108
YIQ	173.3110, 9.4900, 4.2260

Conversions

Conversions Part 2

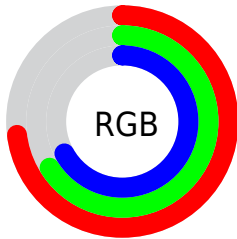
Format	Color
RYB	185, 168, 170
Decimal	12167338
CIELab	70.33, 6.47, 1.20
CIELCh	70, 6.580, 10.467
Yxy	41.2218, 0.3267, 0.3264
Android (android.graphics.Color)	4290357418 (0xFFB9A8AA)
YUV	173.3110, -1.6323, 10.2513
Hunter-Lab	64.2042, 2.3525, 4.4854

Details

The Yxy color $41.2218, 0.3267, 0.3264$ is a light color, and the websafe version is hex 999999 . A complement of this color would be $46.4291, 0.3003, 0.3316$, and the grayscale version is $41.9600, 0.3127, 0.3290$.

A 20% lighter version of the original color is $76.9124, 0.3242, 0.3270$, and $18.7043, 0.3311, 0.3254$ is the 20% darker color. If you saturate the color by 10%, you get $34.2917, 0.3455, 0.3234$, and if you desaturate by 10%, it is $49.2038, 0.3116, 0.3292$.

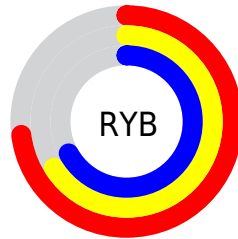
Distribution



Red (73%)

Green (66%)

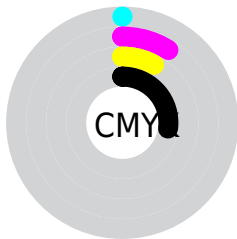
Blue (67%)



Red (73%)

Yellow (66%)

Blue (67%)

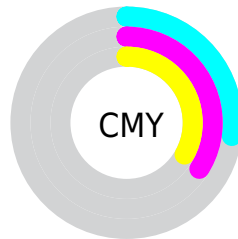


Cyan (0%)

Magenta (9%)

Yellow (8%)

Black (27%)



Cyan (27%)


Magenta (34%)


Yellow (33%)

Brightness & Saturation Gradients

These gradients show how the Yxy color 41.2218, 0.3267, 0.3264 changes by changing the brightness by 10 percent. The first figure shows a shift by +10% for each color and the second figure -10%.


Similar to the brightness gradients but the following saturation gradients show a change of the Yxy color 41.2218, 0.3267, 0.3264 by changing the saturation by 10% instead.


 41.2218, 0.3267,
0.3264


 41.2218, 0.3267,
0.3264


351.2468, 0.3196,
0.3278

 28.4924, 0.3285,
0.3260


 77.0205, 0.3241,
0.3269

 18.6972, 0.3309,
0.3256


 100.8586, 0.3231,
0.3271

 11.4517, 0.3342,
0.3249


129.1684, 0.3223,
0.3273

 6.3715, 0.3389,
0.3240

162.3343, 0.3216,
0.3274

 3.0723, 0.3461,
0.3225

200.7407, 0.3210,
0.3275

 1.1696, 0.3589,
0.3197

244.7720, 0.3204,

 0.0366, 0.8403,

0.3276

0.1597

294.8125, 0.3200,
0.3277

0.0000, 0.0000,
0.0000

41.2218, 0.3267,
0.3264

41.2218, 0.3267,
0.3264

34.2917, 0.3455,
0.3234

49.2038, 0.3116,
0.3292

28.3645, 0.3687,
0.3203

58.2733, 0.2994,
0.3318

23.3954, 0.3973,
0.3172

68.4709, 0.2895,
0.3342

19.3338, 0.4317,
0.3145

79.8337, 0.2814,
0.3363

16.1250, 0.4716,
0.3126

88.8374, 0.2742,
0.3325

■ 13.7078, 0.5153,
0.3121

■ 89.0502, 0.2726,
0.3289

■ 12.0134, 0.5589,
0.3135

■ 10.9607, 0.5967,
0.3172

■ 10.4056, 0.6239,
0.3218

Harmonies

Analogous

The Analogous color harmony consists of three colors that are next to each other on the color wheel.



41.2218, 0.3184, 0.3188



41.2218, 0.3267, 0.3264



41.2218, 0.3312, 0.3348

Triad

The Triadic color harmony groups three colors that are evenly spaced from another and form a triangle on the color wheel.



41.2218, 0.3267, 0.3264



41.2218, 0.3165, 0.3447



41.2218, 0.2951, 0.3160

Complementary

The Complementary color scheme is a pair of colors which are on the opposite of each other on the color wheel.



41.2218, 0.3267, 0.3264



46.4291, 0.3003, 0.3316

Split Complementary

Split-complementary colors differ from the complementary color scheme. The scheme consists of three colors, the original color and two neighbors of the complement color.



41.2218, 0.2946, 0.3228



41.2218, 0.3267, 0.3264



41.2218, 0.3069, 0.3396

Square

The Square scheme is like the rectangle color scheme, but the four colors are evenly spaced on the color wheel.



41.2218, 0.3267, 0.3264



41.2218, 0.3252, 0.3455



41.2218, 0.2989, 0.3315



41.2218, 0.3002, 0.3128

Rectangle

The Rectangle color scheme consists of four colors that form a rectangle on the color wheel.



41.2218, 0.3267, 0.3264



41.2218, 0.3314, 0.3397



41.2218, 0.2989, 0.3315



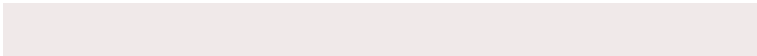
41.2218, 0.2944, 0.3179

Sweetspot

The Sweet Spot groups the original color and five complimentary colors.



41.2236, 0.3267, 0.3264



82.3762, 0.3171, 0.3282



41.5440, 0.3117, 0.3067



17.5086, 0.3183, 0.3279



93.3107, 0.3127, 0.3290



18.7317, 0.3127, 0.3290

Same Dimension

The Same Dimension uses a secret algorithm to generate beautiful new colors.



41.2236, 0.3267, 0.3264



71.2084, 0.3302, 0.3258



43.4996, 0.3276, 0.3373



9.0288, 0.3270, 0.3264



7.0674, 0.6236, 0.3209



0.2548, 0.5726, 0.2928

Inverse Universe

The Inverse Universe completely reimagines the original color for something new.



41.2236, 0.3267, 0.3264



71.2084, 0.3302, 0.3258



43.9688, 0.2988, 0.3206



9.0288, 0.3270, 0.3264



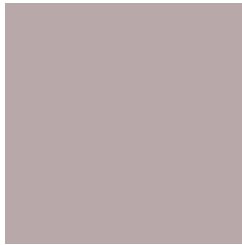
7.0674, 0.6236, 0.3209



0.2548, 0.5726, 0.2928

Previews

White Background



This preview shows how the Yxy color 41.2218, 0.3267, 0.3264 looks on a white background.

Color Contrast Check

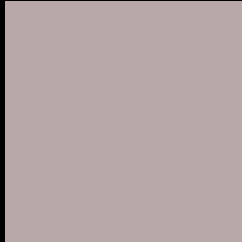
Large Text (above 18pt) WCAG AA × Fail

Any Text WCAG AA × Fail

Large Text (above 18pt) WCAG AAA × Fail

Any Text WCAG AAA × Fail

Black Background



This preview shows how the Yxy color 41.2218, 0.3267, 0.3264 looks on a black background.

Color Contrast Check

Large Text (above 18pt) WCAG AA ✓ Pass

Any Text WCAG AA ✓ Pass

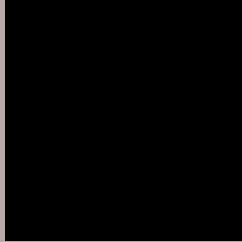
Large Text (above 18pt) WCAG AAA ✓ Pass

Any Text WCAG AAA ✓ Pass

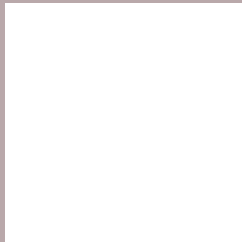
If you want to check with other color combinations, try the [Color Contrast Checker](#).

Yxy 41.2218, 0.3267, 0.3264

Background



This preview shows how black text looks on a background with the Yxy color 41.2218, 0.3267, 0.3264.



This preview shows how white text looks on a background with the Yxy color 41.2218, 0.3267, 0.3264.

Color Blindness Simulation

Color vision deficiency is a very complex topic, and I could not describe the different causes any better than Wikipedia does, so if you want to learn more, you should check out their [article about color blindness](#).

Dichromacy



Original Color

41.2218, 0.3267, 0.3264

Protanopia

41.2183, 0.3155, 0.3276

Deuteranopia

40.9935, 0.3308, 0.3238



Tritanopia

41.3718, 0.3190, 0.3120

Trichromacy



Original Color

41.2218, 0.3267, 0.3264

Protanomaly

41.2734, 0.3201, 0.3277

Deuteranomaly

41.2311, 0.3297, 0.3251

Tritanomaly

41.2111, 0.3225, 0.3172

Monochromacy



Original Color

41.2218, 0.3267, 0.3264

Achromatopsia

41.7885, 0.3127, 0.3290

Achromatomaly

41.4515, 0.3173, 0.3277

CSS Examples

Text

The CSS property to change the color of the text to Yxy 41.2218, 0.3267, 0.3264 is called "color". The color property can be set on classes, ids or directly on the HTML element.

This example shows how text in the color `rgb(185, 168, 170)` looks like.

```
.text, #text, p{  
    color:rgb(185, 168, 170)  
}
```

If you want to add a text shadow in that color use the text-shadow property, you can generate a text shadow directly with our [CSS Text Shadow Generator](#).

Here you see how black text with a 4 pixel rgb(185, 168, 170) colored shadow looks like.

```
.shadow{ text-shadow: 4px 4px 2px rgb(185, 168, 170) }
```

Border

The CSS property to change the border of an element to Yxy 41.2218, 0.3267, 0.3264 is called "border". The border property can be set on classes, ids or directly on the HTML element.

This example shows the color as border, it can be applied via the CSS property "border" or "border-color".

```
.border, #border, table{ border:4px solid rgb(185, 168, 170) }
```

If only the border color should be changed use the property `border-color`.

```
.border{ border-color:rgb(185, 168, 170) }
```

If you want to add a box shadow in that color use:

Here you see how a box with a 4 pixel `rgb(185, 168, 170)` colored shadow looks like.

```
.boxshadow{ -moz-box-shadow:4px 4px 4px  
4px rgb(185, 168, 170); -webkit-box-  
shadow:4px 4px 4px 4px rgb(185, 168, 170);  
box-shadow:4px 4px 4px 4px rgb(185, 168,  
170) }
```


Background

The CSS property to change the background color of an element to Yxy 41.2218, 0.3267, 0.3264 is called "background". The background property can be set on classes, ids or directly on the HTML element.

```
.background, #background, body{  
background: rgb(185, 168, 170) }
```

If only the background color should be changed can be used:

```
.background{ background-color: rgb(185,  
168, 170) }
```

This example shows the color as background, it is applied via the CSS property "background".

To optimize and compress your CSS code, you can use our [online CSS compressor and optimizer](#) based on csstidy. If you want to create a linear or radial gradient as background or border, check our [CSS Gradient Generator](#).

Hey! You found this booklet interesting? Support Converting Colors with the new Membership Option!

The pro membership hides all ads, plus gives you double the colors in the color bucket, and more awesome pro features!

[Learn more, Memberships starting at \\$2.50/m!](#)

**Follow me
on Twitter!**

@ConvertingColor