

Converting Colors

Yxy(41.4532, 0.3541, 0.3390)

Have a look what the booklet for
Yxy(41.4532, 0.3541, 0.3390)
contains.

Yxy(41.2646, 0.3538, 0.3381)	3
<i>Conversions</i>	4
<i>Details</i>	6
<i>Harmonies</i>	12
<i>Previews</i>	24
<i>Color Blindness Simulation</i>	27
<i>CSS Examples</i>	30

Color

Yxy(41.2646, 0.3538, 0.3381)

Conversions

Conversions Part 1

Format	Color
Hex	C8A49D
RGB	200, 164, 157
RGB Percent	78%, 64%, 62%
CMY	0.2157, 0.3568, 0.3842
CMYK	0.00, 0.18, 0.21, 0.22
HSL	10°, 28%, 70%
HSV	10°, 21%, 78%
XYZ	43.1808, 41.2646, 37.6031
YIQ	173.9660, 23.7030, 5.4550

Conversions

Conversions Part 2

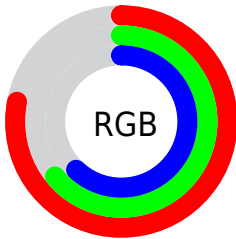
Format	Color
R _Y B	200, 165, 157
Decimal	13149341
CIE Lab	70.36, 12.13, 8.58
CIE LCh	70, 14.856, 35.272
Yxy	41.2646, 0.3538, 0.3381
Android (android.graphics.Color)	4291339421 (0xFFC8A49D)
YUV	173.9660, -8.3642, 22.8318
Hunter-Lab	64.2375, 7.5728, 10.2593

Details

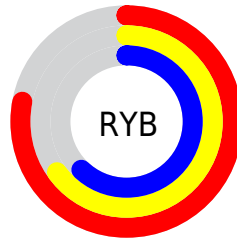
The Yxy color $41.2646, 0.3538, 0.3381$ is a light color, and the websafe version is hex `CC9999`. A complement of this color would be $49.4898, 0.2804, 0.3197$, and the grayscale version is $42.3453, 0.3127, 0.3290$.

A 20% lighter version of the original color is $76.6765, 0.3440, 0.3362$, and $18.6487, 0.3656, 0.3397$ is the 20% darker color. If you saturate the color by 10%, you get $35.0310, 0.3796, 0.3426$, and if you desaturate by 10%, it is $48.4037, 0.3325, 0.3337$.

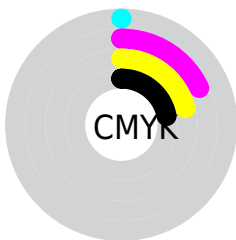
Distribution



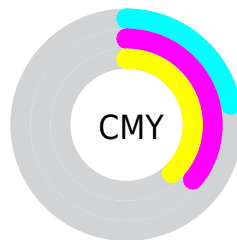
- Red (78%)
- Green (64%)
- Blue (62%)



- Red (78%)
- Yellow (65%)
- Blue (62%)



- Cyan (0%)
- Magenta (18%)
- Yellow (21%)
- Black (22%)





- Cyan (22%)
- Magenta (36%)
- Yellow (38%)

Brightness & Saturation Gradients


These gradients show how the Yxy color 41.2646, 0.3538, 0.3381 changes by changing the brightness by 10 percent. The first figure shows a shift by +10% for each color and the second figure -10%.

Similar to the brightness gradients but the following saturation gradients show a change of the Yxy color 41.2646, 0.3538, 0.3381 by changing the saturation by 10% instead.


 41.2646, 0.3538,
0.3381

 41.2646, 0.3538,
0.3381


351.4253, 0.3327,
0.3338

 28.5259, 0.3593,
0.3391

 77.0854, 0.3460,
0.3366

 18.7225, 0.3664,
0.3403


 100.9363, 0.3431,
0.3360

 11.4699, 0.3761,
0.3419


129.2600, 0.3407,
0.3355

 6.3838, 0.3899,
0.3438

162.4410, 0.3386,
0.3351

 3.0799, 0.4115,
0.3462

200.8636, 0.3368,
0.3347

 1.1736, 0.4534,
0.3519

244.9123, 0.3353,

 0.0400, 0.8932,

0.3344

0.1068

294.9714, 0.3339,
0.3341

0.0000, 0.0000,
0.0000

41.2646, 0.3538,
0.3381

41.2646, 0.3538,
0.3381

35.0310, 0.3796,
0.3426

48.4037, 0.3325,
0.3337

29.6613, 0.4105,
0.3471

56.4768, 0.3150,
0.3296

25.1187, 0.4466,
0.3510

65.5180, 0.3006,
0.3258

21.3619, 0.4873,
0.3537

75.5579, 0.2888,
0.3223

18.3457, 0.5302,
0.3544

86.4945, 0.2800,
0.3213

■ 16.0204, 0.5710,
0.3525

■ 91.0178, 0.2805,
0.3289

■ 14.3299, 0.6044,
0.3475

■ 13.3353, 0.6247,
0.3422

Harmonies

Analogous

The Analogous color harmony consists of three colors that are next to each other on the color wheel.



41.2646, 0.3416, 0.3197



41.2646, 0.3538, 0.3381



41.2646, 0.3545, 0.3549

Triad

The Triadic color harmony groups three colors that are evenly spaced from another and form a triangle on the color wheel.



41.2646, 0.3538, 0.3381



41.2646, 0.3029, 0.3560



41.2646, 0.2820, 0.2935

Complementary

The Complementary color scheme is a pair of colors which are on the opposite of each other on the color wheel.



41.2646, 0.3538, 0.3381



49.4898, 0.2804, 0.3197

Split Complementary

Split-complementary colors differ from the complementary color scheme. The scheme consists of three colors, the original color and two neighbors of the complement color.



41.2646, 0.2725, 0.3016



41.2646, 0.3538, 0.3381



41.2646, 0.2843, 0.3378

Square

The Square scheme is like the rectangle color scheme, but the four colors are evenly spaced on the color wheel.



41.2646, 0.3538, 0.3381



41.2646, 0.3246, 0.3663



41.2646, 0.2733, 0.3176



41.2646, 0.2998, 0.2946

Rectangle

The Rectangle color scheme consists of four colors that form a rectangle on the color wheel.



41.2646, 0.3538, 0.3381



41.2646, 0.3484, 0.3630



41.2646, 0.2733, 0.3176



41.2646, 0.2778, 0.2951

Sweetspot

The Sweet Spot groups the original color and five complimentary colors.



41.2665, 0.3538, 0.3381



91.1465, 0.3227, 0.3314



40.2788, 0.3209, 0.2837



19.3108, 0.3238, 0.3317



0.0000, 0.0000, 0.0000



21.4041, 0.3127, 0.3290

Same Dimension

The Same Dimension uses a secret algorithm to generate beautiful new colors.



41.2665, 0.3538, 0.3381



65.9790, 0.3658, 0.3403



49.3927, 0.3484, 0.3643



10.9103, 0.3286, 0.3328



8.5679, 0.6228, 0.3437



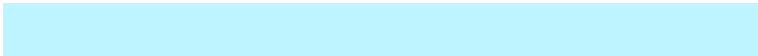
0.4954, 0.5865, 0.3725

Inverse Universe

The Inverse Universe completely reimagines the original color for something new.



49.4898, 0.2804, 0.3197



82.8476, 0.2734, 0.3173



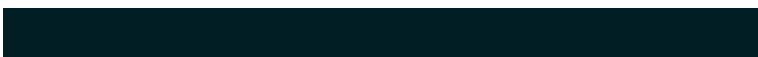
40.8730, 0.2784, 0.2910



11.7632, 0.2984, 0.3252



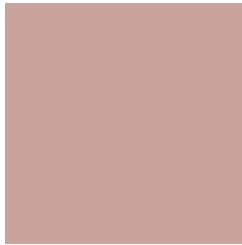
20.4630, 0.2103, 0.2770



1.0494, 0.2136, 0.2889

Previews

White Background



This preview shows how the Yxy color 41.2646, 0.3538, 0.3381 looks on a white background.

Color Contrast Check

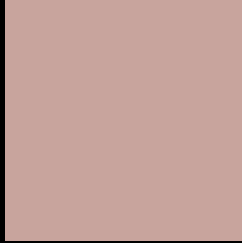
Large Text (above 18pt) WCAG AA × Fail

Any Text WCAG AA × Fail

Large Text (above 18pt) WCAG AAA × Fail

Any Text WCAG AAA × Fail

Black Background



This preview shows how the Yxy color 41.2646, 0.3538, 0.3381 looks on a black background.

Color Contrast Check

Large Text (above 18pt) WCAG AA ✓ Pass

Any Text WCAG AA ✓ Pass

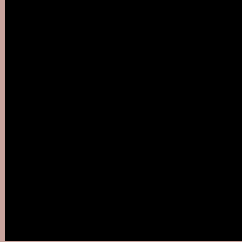
Large Text (above 18pt) WCAG AAA ✓ Pass

Any Text WCAG AAA ✓ Pass

If you want to check with other color combinations, try the [Color Contrast Checker](#).

Yxy 41.2646, 0.3538, 0.3381

Background



This preview shows how black text looks on a background with the Yxy color 41.2646, 0.3538, 0.3381.



This preview shows how white text looks on a background with the Yxy color 41.2646, 0.3538, 0.3381.

Color Blindness Simulation

Color vision deficiency is a very complex topic, and I could not describe the different causes any better than Wikipedia does, so if you want to learn more, you should check out their [article about color blindness](#).

Dichromacy



Original Color

41.2646, 0.3538, 0.3381

Protanopia

41.5432, 0.3275, 0.3441

Deuteranopia

41.3089, 0.3485, 0.3409



Tritanopia

41.1023, 0.3403, 0.3127

Trichromacy



Original Color

41.2646, 0.3538, 0.3381

Protanomaly

41.3531, 0.3364, 0.3411

Deuteranomaly

41.2149, 0.3507, 0.3395

Tritanomaly

41.0853, 0.3448, 0.3214

Monochromacy



Original Color

41.2646, 0.3538, 0.3381

Achromatopsia

42.3268, 0.3127, 0.3290

Achromatomaly

41.6439, 0.3264, 0.3317

CSS Examples

Text

The CSS property to change the color of the text to Yxy 41.2646, 0.3538, 0.3381 is called "color". The color property can be set on classes, ids or directly on the HTML element.

This example shows how text in the color `rgb(200, 164, 157)` looks like.

```
.text, #text, p{  
    color:rgb(200, 164, 157)  
}
```

If you want to add a text shadow in that color use the text-shadow property, you can generate a text shadow directly with our [CSS Text Shadow Generator](#).

Here you see how black text with a 4 pixel rgb(200, 164, 157) colored shadow looks like.

```
.shadow{ text-shadow: 4px 4px 2px rgb(200, 164, 157) }
```

Border

The CSS property to change the border of an element to Yxy 41.2646, 0.3538, 0.3381 is called "border". The border property can be set on classes, ids or directly on the HTML element.

This example shows the color as border, it can be applied via the CSS property "border" or "border-color".

```
.border, #border, table{ border:4px solid rgb(200, 164, 157) }
```

If only the border color should be changed use the property `border-color`.

```
.border{ border-color:rgb(200, 164, 157) }
```

If you want to add a box shadow in that color use:

Here you see how a box with a 4 pixel `rgb(200, 164, 157)` colored shadow looks like.

```
.boxshadow{ -moz-box-shadow:4px 4px 4px  
4px rgb(200, 164, 157); -webkit-box-  
shadow:4px 4px 4px 4px rgb(200, 164, 157);  
box-shadow:4px 4px 4px 4px rgb(200, 164,  
157) }
```


Background

The CSS property to change the background color of an element to Yxy 41.2646, 0.3538, 0.3381 is called "background". The background property can be set on classes, ids or directly on the HTML element.

```
.background, #background, body{  
background: rgb(200, 164, 157) }
```

If only the background color should be changed can be used:

```
.background{ background-color: rgb(200,  
164, 157) }
```

This example shows the color as background, it is applied via the CSS property "background".

To optimize and compress your CSS code, you can use our [online CSS compressor and optimizer](#) based on csstidy. If you want to create a linear or radial gradient as background or border, check our [CSS Gradient Generator](#).

Hey! You found this booklet interesting? Support Converting Colors with the new Membership Option!

The pro membership hides all ads, plus gives you double the colors in the color bucket, and more awesome pro features!

[Learn more, Memberships starting at \\$2.50/m!](#)

**Follow me
on Twitter!**

@ConvertingColor