

# Converting Colors

$Yxy(41.5905, 0.3320, 0.3290)$

Have a look what the booklet for  
Yxy(41.5905, 0.3320, 0.3290)  
contains.

<b>Yxy(41.6512, 0.3323, 0.3291)</b> .....	3
<b><i>Conversions</i></b> .....	4
<b><i>Details</i></b> .....	6
<b><i>Harmonies</i></b> .....	12
<b><i>Previews</i></b> .....	24
<b><i>Color Blindness Simulation</i></b> .....	27
<b><i>CSS Examples</i></b> .....	30

# Color

**Yxy(41.6512, 0.3323, 0.3291)**

# Conversions

## Conversions Part 1

Format	Color
Hex	BDA8A8
RGB	189, 168, 168
RGB Percent	74%, 66%, 66%
CMY	0.2588, 0.3412, 0.3413
CMYK	0.00, 0.11, 0.11, 0.26
HSL	0°, 14%, 70%
HSV	0°, 11%, 74%
XYZ	42.0562, 41.6512, 42.8535
YIQ	174.2790, 12.5160, 4.4520

# Conversions

## Conversions Part 2

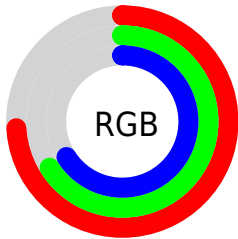
<b>Format</b>	<b>Color</b>
<b>R<sub>YB</sub></b>	189, 168, 168
Decimal	12429480
CIE Lab	70.63, 7.60, 2.79
CIE LCh	71, 8.101, 20.175
Yxy	41.6512, 0.3323, 0.3291
Android (android.graphics.Color)	4290619560 (0xFFBDA8A8)
YUV	174.2790, -3.0955, 12.9103
Hunter-Lab	64.5377, 3.3790, 5.8074

# Details

The Yxy color **41.6512, 0.3323, 0.3291** is a light color, and the websafe version is hex **999999**. A complement of this color would be **48.3810, 0.2959, 0.3289**, and the grayscale version is **42.4903, 0.3127, 0.3290**.

A 20% lighter version of the original color is **77.5155, 0.3284, 0.3290**, and **18.9860, 0.3389, 0.3291** is the 20% darker color. If you saturate the color by 10%, you get **34.5296, 0.3546, 0.3292**, and if you desaturate by 10%, it is **49.8900, 0.3145, 0.3290**.

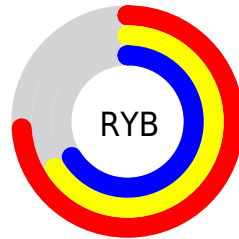
# Distribution



Red (74%)

Green (66%)

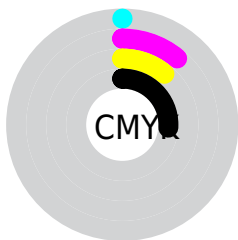
Blue (66%)



Red (74%)

Yellow (66%)

Blue (66%)

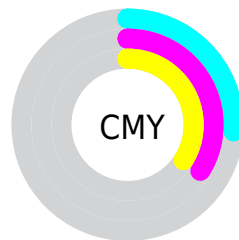


Cyan (0%)

Magenta (11%)

Yellow (11%)

Black (26%)



Cyan (26%)

Magenta (34%)


Yellow (34%)


# Brightness & Saturation Gradients

These gradients show how the Yxy color 41.6512, 0.3323, 0.3291 changes by changing the brightness by 10 percent. The first figure shows a shift by +10% for each color and the second figure -10%.


Similar to the brightness gradients but the following saturation gradients show a change of the Yxy color 41.6512, 0.3323, 0.3291 by changing the saturation by 10% instead.





 41.6512, 0.3323,  
0.3291

 41.6512, 0.3323,  
0.3291


353.0350, 0.3223,  
0.3291

 28.8283, 0.3349,  
0.3291

 77.6715, 0.3286,  
0.3291

 18.9509, 0.3382,  
0.3290


 101.6376, 0.3272,  
0.3291

 11.6348, 0.3428,  
0.3289


130.0869, 0.3261,  
0.3291

 6.4955, 0.3493,  
0.3288

163.4038, 0.3251,  
0.3291

 3.1487, 0.3594,  
0.3284

201.9726, 0.3243,  
0.3291

 1.2098, 0.3773,  
0.3274

246.1778, 0.3235,

 0.0697, 0.7832,

0.3291

0.2168

296.4038, 0.3229,  
0.3291

0.0000, 0.0000,  
0.0000

41.6512, 0.3323,  
0.3291

41.6512, 0.3323,  
0.3291

34.5296, 0.3546,  
0.3292

49.8900, 0.3145,  
0.3290

28.4719, 0.3823,  
0.3293

59.2853, 0.3002,  
0.3289

23.4286, 0.4163,  
0.3295

69.8813, 0.2887,  
0.3289

19.3445, 0.4568,  
0.3296

81.7183, 0.2794,  
0.3288

16.1587, 0.5027,  
0.3298

89.5601, 0.2747,  
0.3289

■ 13.8035, 0.5503,  
0.3299

■ 12.2019, 0.5931,  
0.3300

■ 11.2620, 0.6239,  
0.3300

■ 10.8268, 0.6400,  
0.3301

# Harmonies

## Analogous

The Analogous color harmony consists of three colors that are next to each other on the color wheel.



41.6512, 0.3233, 0.3193



41.6512, 0.3323, 0.3291



41.6512, 0.3359, 0.3391

# Triad

The Triadic color harmony groups three colors that are evenly spaced from another and form a triangle on the color wheel.



41.6512, 0.3323, 0.3291



41.6512, 0.3135, 0.3469



41.6512, 0.2926, 0.3113

# Complementary

The Complementary color scheme is a pair of colors which are on the opposite of each other on the color wheel.



41.6512, 0.3323, 0.3291



48.3810, 0.2959, 0.3289

# Split Complementary

Split-complementary colors differ from the complementary color scheme. The scheme consists of three colors, the original color and two neighbors of the complement color.



41.6512, 0.2901, 0.3183



41.6512, 0.3323, 0.3291



41.6512, 0.3020, 0.3390

# Square

The Square scheme is like the rectangle color scheme, but the four colors are evenly spaced on the color wheel.



41.6512, 0.3323, 0.3291



41.6512, 0.3249, 0.3496



41.6512, 0.2935, 0.3284



41.6512, 0.3004, 0.3091



# Rectangle

The Rectangle color scheme consists of four colors that form a rectangle on the color wheel.



41.6512, 0.3323, 0.3291



41.6512, 0.3348, 0.3446



41.6512, 0.2935, 0.3284



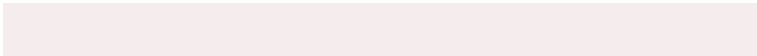
41.6512, 0.2911, 0.3131

# Sweetspot

The Sweet Spot groups the original color and five complimentary colors.



41.6530, 0.3323, 0.3291



86.3573, 0.3176, 0.3290



42.4890, 0.3140, 0.3020



18.3053, 0.3190, 0.3290



95.5105, 0.3127, 0.3290



19.5994, 0.3127, 0.3290



# Same Dimension

The Same Dimension uses a secret algorithm to generate beautiful new colors.



41.6530, 0.3323, 0.3291



71.7818, 0.3365, 0.3291



45.6824, 0.3307, 0.3428



9.5388, 0.3288, 0.3291



7.2848, 0.6399, 0.3301



0.2862, 0.6394, 0.3305



# Inverse Universe

The Inverse Universe completely reimagines the original color for something new.



48.3810, 0.2959, 0.3289



85.8756, 0.2928, 0.3289



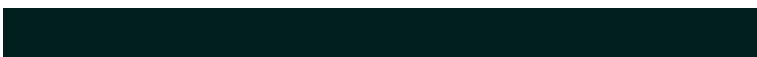
44.0324, 0.2957, 0.3149



10.8068, 0.2985, 0.3289



26.8724, 0.2245, 0.3283

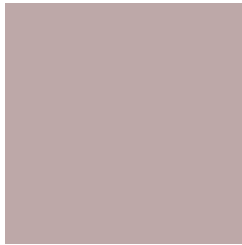


1.0535, 0.2246, 0.3284



# Previews

## White Background



This preview shows how the Yxy color 41.6512, 0.3323, 0.3291 looks on a white background.

## Color Contrast Check

Large Text (above 18pt) WCAG AA × Fail

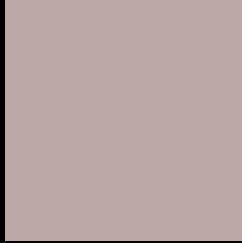
Any Text WCAG AA × Fail

Large Text (above 18pt) WCAG AAA × Fail

Any Text WCAG AAA × Fail



# Black Background



This preview shows how the Yxy color 41.6512, 0.3323, 0.3291 looks on a black background.

## Color Contrast Check

Large Text (above 18pt) WCAG AA ✓ Pass

Any Text WCAG AA ✓ Pass

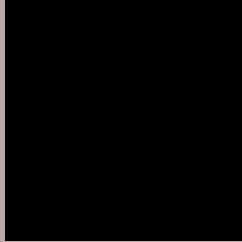
Large Text (above 18pt) WCAG AAA ✓ Pass

Any Text WCAG AAA ✓ Pass

If you want to check with other color combinations, try the [Color Contrast Checker](#).

**Yxy 41.6512, 0.3323, 0.3291**

## **Background**



This preview shows how black text looks on a background with the Yxy color 41.6512, 0.3323, 0.3291.



This preview shows how white text looks on a background with the Yxy color 41.6512, 0.3323, 0.3291.

# Color Blindness Simulation

Color vision deficiency is a very complex topic, and I could not describe the different causes any better than Wikipedia does, so if you want to learn more, you should check out their [article about color blindness](#).

## Dichromacy



### Original Color

41.6512, 0.3323, 0.3291

### Protanopia

41.6374, 0.3180, 0.3317

### Deuteranopia

41.5410, 0.3343, 0.3278



## Tritanopia

41.6035, 0.3246, 0.3122

# Trichromacy



## Original Color

41.6512, 0.3323, 0.3291

## Protanomaly

41.8141, 0.3235, 0.3317

## Deuteranomaly

41.4117, 0.3334, 0.3277

## Tritanomaly

41.6797, 0.3271, 0.3186

# Monochromacy



## Original Color

41.6512, 0.3323, 0.3291

## Achromatopsia

42.3268, 0.3127, 0.3290

## Achromatomaly

42.0673, 0.3190, 0.3290

# CSS Examples

## Text

The CSS property to change the color of the text to Yxy 41.6512, 0.3323, 0.3291 is called "color". The color property can be set on classes, ids or directly on the HTML element.

This example shows how text in the color `rgb(189, 168, 168)` looks like.

```
.text, #text, p{  
    color:rgb(189, 168, 168)  
}
```

If you want to add a text shadow in that color use the text-shadow property, you can generate a text shadow directly with our [CSS Text Shadow Generator](#).

Here you see how black text with a 4 pixel rgb(189, 168, 168) colored shadow looks like.

```
.shadow{ text-shadow: 4px 4px 2px rgb(189, 168, 168) }
```

## Border

The CSS property to change the border of an element to Yxy 41.6512, 0.3323, 0.3291 is called "border". The border property can be set on classes, ids or directly on the HTML element.

This example shows the color as border, it can be applied via the CSS property "border" or "border-color".

```
.border, #border, table{ border:4px solid rgb(189, 168, 168) }
```

If only the border color should be changed use the property border-color.

```
.border{ border-color:rgb(189, 168, 168) }
```

If you want to add a box shadow in that color use:

Here you see how a box with a 4 pixel rgb(189, 168, 168) colored shadow looks like.

```
.boxshadow{ -moz-box-shadow:4px 4px 4px  
4px rgb(189, 168, 168); -webkit-box-  
shadow:4px 4px 4px 4px rgb(189, 168, 168);  
box-shadow:4px 4px 4px 4px rgb(189, 168,  
168) }
```



# Background

The CSS property to change the background color of an element to Yxy 41.6512, 0.3323, 0.3291 is called "background". The background property can be set on classes, ids or directly on the HTML element.

```
.background, #background, body{  
background: rgb(189, 168, 168) }
```

If only the background color should be changed can be used:

```
.background{ background-color: rgb(189,  
168, 168) }
```

This example shows the color as background, it is applied via the CSS property "background".

To optimize and compress your CSS code, you can use our [online CSS compressor and optimizer](#) based on csstidy. If you want to create a linear or radial gradient as background or border, check our [CSS Gradient Generator](#).

Hey! You found this booklet interesting? Support Converting Colors with the new Membership Option!

The pro membership hides all ads, plus gives you double the colors in the color bucket, and more awesome pro features!

**[Learn more, Memberships starting at \\$2.50/m!](#)**

**Follow me  
on Twitter!**

@ConvertingColor