

Converting Colors

$Yxy(41.6507, 0.3693, 0.3445)$

Have a look what the booklet for
Yxy(41.6507, 0.3693, 0.3445)
contains.

Yxy(41.4526, 0.3691, 0.3443)	3
Conversions	4
Details	6
Harmonies	12
Previews	24
Color Blindness Simulation	27
CSS Examples	30

Color

Yxy(41.4526, 0.3691, 0.3443)

Conversions

Conversions Part 1

Format	Color
Hex	D0A296
RGB	208, 162, 150
RGB Percent	82%, 64%, 59%
CMY	0.1843, 0.3647, 0.4118
CMYK	0.00, 0.22, 0.28, 0.18
HSL	12°, 38%, 70%
HSV	12°, 28%, 82%
XYZ	44.4384, 41.4526, 34.5057
YIQ	174.3860, 31.2680, 6.0200

Conversions

Conversions Part 2

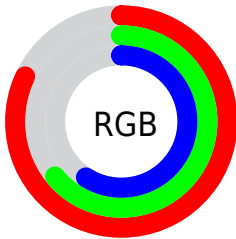
Format	Color
R _Y B	208, 165, 150
Decimal	13673110
CIE Lab	70.49, 15.26, 12.77
CIE LCh	70, 19.897, 39.919
Yxy	41.4526, 0.3691, 0.3443
Android (android.graphics.Color)	4291863190 (0xFFD0A296)
YUV	174.3860, -12.0223, 29.4795
Hunter-Lab	64.3837, 10.5315, 13.2928

Details

The Yxy color **41.4526, 0.3691, 0.3443** is a light color, and the websafe version is hex **CC9999**. A complement of this color would be **50.5119, 0.2709, 0.3131**, and the grayscale version is **42.5881, 0.3127, 0.3290**.

A 20% lighter version of the original color is **75.2453, 0.3501, 0.3423**, and **18.8250, 0.3874, 0.3478** is the 20% darker color. If you saturate the color by 10%, you get **35.4085, 0.3974, 0.3501**, and if you desaturate by 10%, it is **48.3816, 0.3454, 0.3386**.

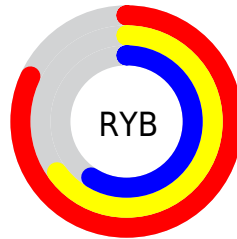
Distribution



Red (82%)

Green (64%)

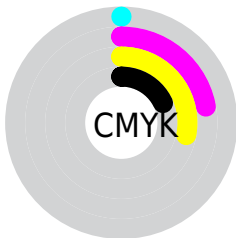
Blue (59%)



Red (82%)

Yellow (65%)

Blue (59%)

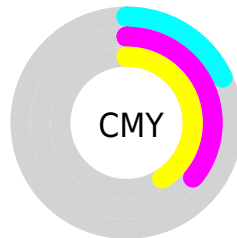


Cyan (0%)

Magenta (22%)

Yellow (28%)

Black (18%)



Cyan (18%)


Magenta (36%)


Yellow (41%)

Brightness & Saturation Gradients


These gradients show how the Yxy color 41.4526, 0.3691, 0.3443 changes by changing the brightness by 10 percent. The first figure shows a shift by +10% for each color and the second figure -10%.


Similar to the brightness gradients but the following saturation gradients show a change of the Yxy color 41.4526, 0.3691, 0.3443 by changing the saturation by 10% instead.


 41.4526, 0.3691,
0.3443

 41.4526, 0.3691,
0.3443


352.2087, 0.3401,
0.3371

 28.6729, 0.3766,
0.3459


 77.3705, 0.3584,
0.3418

 18.8335, 0.3863,
0.3479


 101.2775, 0.3544,
0.3408

 11.5500, 0.3995,
0.3503


129.6623, 0.3511,
0.3400

 6.4381, 0.4183,
0.3532

162.9095, 0.3482,
0.3393

 3.1133, 0.4472,
0.3564

201.4033, 0.3458,
0.3386

 1.1911, 0.5134,
0.3708

245.5282, 0.3436,

 0.0545, 0.8863,

0.3381

0.1137

295.6685, 0.3418,
0.3376

0.0000, 0.0000,
0.0000

41.4526, 0.3691,
0.3443

41.4526, 0.3691,
0.3443

35.4085, 0.3974,
0.3501

48.3816, 0.3454,
0.3386

30.2077, 0.4305,
0.3554

56.2232, 0.3258,
0.3331

25.8139, 0.4683,
0.3596

65.0113, 0.3095,
0.3280

22.1860, 0.5090,
0.3619

74.7762, 0.2961,
0.3233

19.2789, 0.5497,
0.3612

85.5468, 0.2849,
0.3190

■ 17.0428, 0.5857,
0.3568

■ 92.1512, 0.2849,
0.3289

■ 15.4187, 0.6126,
0.3494

■ 15.1454, 0.6175,
0.3479

Harmonies

Analogous

The Analogous color harmony consists of three colors that are next to each other on the color wheel.



41.4526, 0.3548, 0.3201



41.4526, 0.3691, 0.3443



41.4526, 0.3673, 0.3660

Triad

The Triadic color harmony groups three colors that are evenly spaced from another and form a triangle on the color wheel.



41.4526, 0.3691, 0.3443



41.4526, 0.2951, 0.3623



41.4526, 0.2749, 0.2814

Complementary

The Complementary color scheme is a pair of colors which are on the opposite of each other on the color wheel.



41.4526, 0.3691, 0.3443



50.5119, 0.2709, 0.3131

Split Complementary

Split-complementary colors differ from the complementary color scheme. The scheme consists of three colors, the original color and two neighbors of the complement color.



41.4526, 0.2606, 0.2898



41.4526, 0.3691, 0.3443



41.4526, 0.2718, 0.3363

Square

The Square scheme is like the rectangle color scheme, but the four colors are evenly spaced on the color wheel.



41.4526, 0.3691, 0.3443



41.4526, 0.3238, 0.3783



41.4526, 0.2595, 0.3094



41.4526, 0.2996, 0.2849

Rectangle

The Rectangle color scheme consists of four colors that form a rectangle on the color wheel.



41.4526, 0.3691, 0.3443



41.4526, 0.3575, 0.3760



41.4526, 0.2595, 0.3094



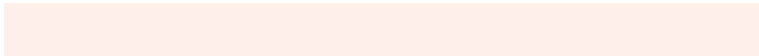
41.4526, 0.2688, 0.2828

Sweetspot

The Sweet Spot groups the original color and five complimentary colors.



41.4545, 0.3691, 0.3443



88.8661, 0.3262, 0.3332



39.2226, 0.3265, 0.2729



18.5965, 0.3289, 0.3340



0.0000, 0.0000, 0.0000



21.4041, 0.3127, 0.3290

Same Dimension

The Same Dimension uses a secret algorithm to generate beautiful new colors.



41.4545, 0.3691, 0.3443



60.2814, 0.3840, 0.3475



52.7006, 0.3598, 0.3787



12.1993, 0.3285, 0.3339



9.5518, 0.6153, 0.3496



0.6508, 0.5797, 0.3779

Inverse Universe

The Inverse Universe completely reimagines the original color for something new.



50.5119, 0.2709, 0.3131



76.7592, 0.2631, 0.3095



38.8180, 0.2668, 0.2737



12.9739, 0.2983, 0.3241



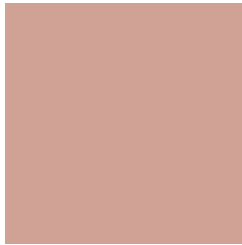
19.7333, 0.2060, 0.2615



1.2106, 0.2098, 0.2753

Previews

White Background



This preview shows how the Yxy color 41.4526, 0.3691, 0.3443 looks on a white background.

Color Contrast Check

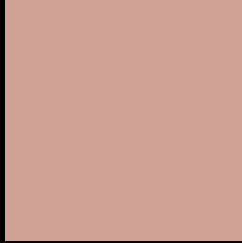
Large Text (above 18pt) WCAG AA × Fail

Any Text WCAG AA × Fail

Large Text (above 18pt) WCAG AAA × Fail

Any Text WCAG AAA × Fail

Black Background



This preview shows how the Yxy color 41.4526, 0.3691, 0.3443 looks on a black background.

Color Contrast Check

Large Text (above 18pt) WCAG AA ✓ Pass

Any Text WCAG AA ✓ Pass

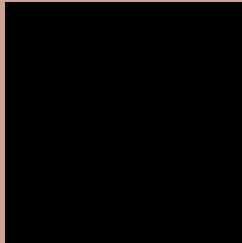
Large Text (above 18pt) WCAG AAA ✓ Pass

Any Text WCAG AAA ✓ Pass

If you want to check with other color combinations, try the [Color Contrast Checker](#).

Yxy 41.4526, 0.3691, 0.3443

Background



This preview shows how black text looks on a background with the Yxy color 41.4526, 0.3691, 0.3443.



This preview shows how white text looks on a background with the Yxy color 41.4526, 0.3691, 0.3443.

Color Blindness Simulation

Color vision deficiency is a very complex topic, and I could not describe the different causes any better than Wikipedia does, so if you want to learn more, you should check out their [article about color blindness](#).

Dichromacy



Original Color

41.4526, 0.3691, 0.3443

Protanopia

41.5749, 0.3346, 0.3523

Deuteranopia

41.4481, 0.3589, 0.3513



Tritanopia

41.4382, 0.3514, 0.3143

Trichromacy



Original Color

41.4526, 0.3691, 0.3443

Protanomaly

41.2523, 0.3468, 0.3491

Deuteranomaly

41.6367, 0.3631, 0.3497

Tritanomaly

41.3413, 0.3579, 0.3254

Monochromacy



Original Color

41.4526, 0.3691, 0.3443

Achromatopsia

42.3268, 0.3127, 0.3290

Achromatomaly

41.9052, 0.3318, 0.3357

CSS Examples

Text

The CSS property to change the color of the text to Yxy 41.4526, 0.3691, 0.3443 is called "color". The color property can be set on classes, ids or directly on the HTML element.

This example shows how text in the color `rgb(208, 162, 150)` looks like.

```
.text, #text, p{  
    color:rgb(208, 162, 150)  
}
```

If you want to add a text shadow in that color use the text-shadow property, you can generate a text shadow directly with our [CSS Text Shadow Generator](#).

Here you see how black text with a 4 pixel rgb(208, 162, 150) colored shadow looks like.

```
.shadow{ text-shadow: 4px 4px 2px rgb(208, 162, 150) }
```

Border

The CSS property to change the border of an element to Yxy 41.4526, 0.3691, 0.3443 is called "border". The border property can be set on classes, ids or directly on the HTML element.

This example shows the color as border, it can be applied via the CSS property "border" or "border-color".

```
.border, #border, table{ border:4px solid rgb(208, 162, 150) }
```

If only the border color should be changed use the property `border-color`.

```
.border{ border-color:rgb(208, 162, 150) }
```

If you want to add a box shadow in that color use:

Here you see how a box with a 4 pixel `rgb(208, 162, 150)` colored shadow looks like.

```
.boxshadow{ -moz-box-shadow:4px 4px 4px  
4px rgb(208, 162, 150); -webkit-box-  
shadow:4px 4px 4px 4px rgb(208, 162, 150);  
box-shadow:4px 4px 4px 4px rgb(208, 162,  
150) }
```


Background

The CSS property to change the background color of an element to Yxy 41.4526, 0.3691, 0.3443 is called "background". The background property can be set on classes, ids or directly on the HTML element.

```
.background, #background, body{  
background: rgb(208, 162, 150) }
```

If only the background color should be changed can be used:

```
.background{ background-color: rgb(208,  
162, 150) }
```

This example shows the color as background, it is applied via the CSS property "background".

To optimize and compress your CSS code, you can use our [online CSS compressor and optimizer](#) based on csstidy. If you want to create a linear or radial gradient as background or border, check our [CSS Gradient Generator](#).

Hey! You found this booklet interesting? Support Converting Colors with the new Membership Option!

The pro membership hides all ads, plus gives you double the colors in the color bucket, and more awesome pro features!

[Learn more, Memberships starting at \\$2.50/m!](#)

**Follow me
on Twitter!**

@ConvertingColor