

Converting Colors

$Y_{xy}(41.6660, 0.3716, 0.3399)$

Have a look what the booklet for
Yxy(41.6660, 0.3716, 0.3399)
contains.

Yxy(41.7538, 0.3714, 0.3403)	3
<i>Conversions</i>	4
<i>Details</i>	6
<i>Harmonies</i>	12
<i>Previews</i>	24
<i>Color Blindness Simulation</i>	27
<i>CSS Examples</i>	30

Color

Yxy(41.7538, 0.3714, 0.3403)

Conversions

Conversions Part 1

Format	Color
Hex	D4A198
RGB	212, 161, 152
RGB Percent	83%, 63%, 60%
CMY	0.1685, 0.3686, 0.4038
CMYK	0.00, 0.24, 0.28, 0.17
HSL	9°, 41%, 71%
HSV	9°, 28%, 83%
XYZ	45.5697, 41.7538, 35.3736
YIQ	175.2230, 33.2850, 8.0130

Conversions

Conversions Part 2

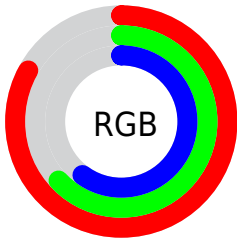
Format	Color
R _Y B	212, 163, 152
Decimal	13935000
CIE Lab	70.70, 17.62, 11.99
CIE LCh	71, 21.319, 34.237
Yxy	41.7538, 0.3714, 0.3403
Android (android.graphics.Color)	4292125080 (0xFFD4A198)
YUV	175.2230, -11.4489, 32.2534
Hunter-Lab	64.6172, 12.8027, 12.7747

Details

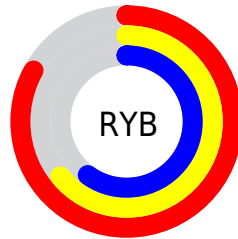
The Yxy color **41.7538, 0.3714, 0.3403** is a light color, and the websafe version is hex **CC9999**. A complement of this color would be **54.1685, 0.2707, 0.3173**, and the grayscale version is **43.0411, 0.3127, 0.3290**.

A 20% lighter version of the original color is **74.8280, 0.3488, 0.3393**, and **18.9448, 0.3892, 0.3425** is the 20% darker color. If you saturate the color by 10%, you get **35.2676, 0.4010, 0.3445**, and if you desaturate by 10%, it is **49.2770, 0.3468, 0.3361**.

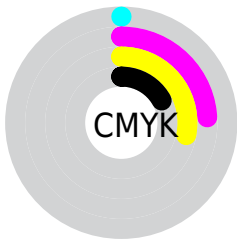
Distribution



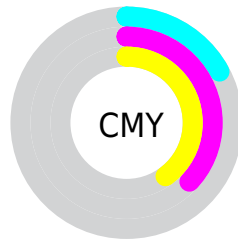
- Red (83%)
- Green (63%)
- Blue (60%)



- Red (83%)
- Yellow (64%)
- Blue (60%)



- Cyan (0%)
- Magenta (24%)
- Yellow (28%)
- Black (17%)




- Cyan (17%)
- Magenta (37%)
- Yellow (40%)

Brightness & Saturation Gradients


These gradients show how the Yxy color 41.7538, 0.3714, 0.3403 changes by changing the brightness by 10 percent. The first figure shows a shift by +10% for each color and the second figure -10%.


Similar to the brightness gradients but the following saturation gradients show a change of the Yxy color 41.7538, 0.3714, 0.3403 by changing the saturation by 10% instead.


 41.7538, 0.3714,
0.3403

 41.7538, 0.3714,
0.3403


353.4613, 0.3412,
0.3352

 28.9086, 0.3792,
0.3414


 77.8269, 0.3603,
0.3386

 19.0117, 0.3893,
0.3426


 101.8235, 0.3561,
0.3379

 11.6787, 0.4030,
0.3441


130.3060, 0.3527,
0.3373

 6.5253, 0.4225,
0.3456

163.6589, 0.3497,
0.3368

 3.1670, 0.4524,
0.3467

202.2665, 0.3471,
0.3363

 1.2196, 0.5155,
0.3537

246.5131, 0.3449,

 0.0776, 0.8666,

0.3359

0.1334

296.7833, 0.3430,
0.3355

0.0000, 0.0000,
0.0000

41.7538, 0.3714,
0.3403

41.7538, 0.3714,
0.3403

35.2676, 0.4010,
0.3445

49.2770, 0.3468,
0.3361

29.7671, 0.4361,
0.3483

57.8739, 0.3267,
0.3321

25.2057, 0.4762,
0.3512

67.5865, 0.3101,
0.3284

21.5303, 0.5195,
0.3524

78.4528, 0.2966,
0.3250

18.6827, 0.5620,
0.3512

90.3122, 0.2870,
0.3250

■ 16.5975, 0.5982,
0.3472

■ 92.7401, 0.2872,
0.3289

■ 15.1965, 0.6235,
0.3412

■ 15.0169, 0.6270,
0.3403

Harmonies

Analogous

The Analogous color harmony consists of three colors that are next to each other on the color wheel.



41.7538, 0.3532, 0.3148



41.7538, 0.3714, 0.3403



41.7538, 0.3728, 0.3645

Triad

The Triadic color harmony groups three colors that are evenly spaced from another and form a triangle on the color wheel.



41.7538, 0.3714, 0.3403



41.7538, 0.2994, 0.3690



41.7538, 0.2685, 0.2789

Complementary

The Complementary color scheme is a pair of colors which are on the opposite of each other on the color wheel.



41.7538, 0.3714, 0.3403



54.1685, 0.2707, 0.3173

Split Complementary

Split-complementary colors differ from the complementary color scheme. The scheme consists of three colors, the original color and two neighbors of the complement color.



41.7538, 0.2558, 0.2902



41.7538, 0.3714, 0.3403



41.7538, 0.2730, 0.3424

Square

The Square scheme is like the rectangle color scheme, but the four colors are evenly spaced on the color wheel.



41.7538, 0.3714, 0.3403



41.7538, 0.3303, 0.3833



41.7538, 0.2574, 0.3130



41.7538, 0.2930, 0.2804

Rectangle

The Rectangle color scheme consists of four colors that form a rectangle on the color wheel.



41.7538, 0.3714, 0.3403



41.7538, 0.3642, 0.3767



41.7538, 0.2574, 0.3130



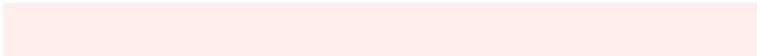
41.7538, 0.2628, 0.2813

Sweetspot

The Sweet Spot groups the original color and five complimentary colors.



41.7557, 0.3714, 0.3403



88.1804, 0.3263, 0.3320



40.8254, 0.3231, 0.2676



18.4252, 0.3291, 0.3326



0.0000, 0.0000, 0.0000



21.4041, 0.3127, 0.3290

Same Dimension

The Same Dimension uses a secret algorithm to generate beautiful new colors.



41.7557, 0.3714, 0.3403



57.2526, 0.3887, 0.3429



53.1045, 0.3619, 0.3750



12.7174, 0.3287, 0.3326



9.3598, 0.6252, 0.3418



0.6619, 0.5961, 0.3649

Inverse Universe

The Inverse Universe completely reimagines the original color for something new.



54.1685, 0.2707, 0.3173



79.1049, 0.2625, 0.3145



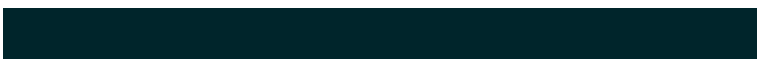
41.7135, 0.2666, 0.2782



13.7767, 0.2983, 0.3254



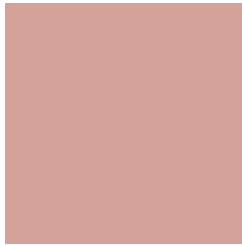
23.2796, 0.2114, 0.2811



1.4920, 0.2140, 0.2902

Previews

White Background



This preview shows how the Yxy color 41.7538, 0.3714, 0.3403 looks on a white background.

Color Contrast Check

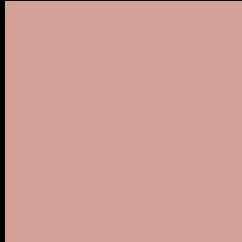
Large Text (above 18pt) WCAG AA × Fail

Any Text WCAG AA × Fail

Large Text (above 18pt) WCAG AAA × Fail

Any Text WCAG AAA × Fail

Black Background



This preview shows how the Yxy color 41.7538, 0.3714, 0.3403 looks on a black background.

Color Contrast Check

Large Text (above 18pt) WCAG AA ✓ Pass

Any Text WCAG AA ✓ Pass

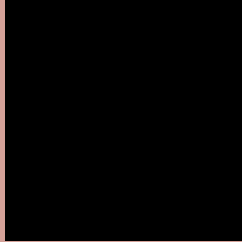
Large Text (above 18pt) WCAG AAA ✓ Pass

Any Text WCAG AAA ✓ Pass

If you want to check with other color combinations, try the [Color Contrast Checker](#).

Yxy 41.7538, 0.3714, 0.3403

Background



This preview shows how black text looks on a background with the Yxy color 41.7538, 0.3714, 0.3403.



This preview shows how white text looks on a background with the Yxy color 41.7538, 0.3714, 0.3403.

Color Blindness Simulation

Color vision deficiency is a very complex topic, and I could not describe the different causes any better than Wikipedia does, so if you want to learn more, you should check out their [article about color blindness](#).

Dichromacy



Original Color

41.7538, 0.3714, 0.3403

Protanopia

42.0591, 0.3318, 0.3495

Deuteranopia

41.8776, 0.3567, 0.3499



Tritanopia

41.6521, 0.3565, 0.3145

Trichromacy



Original Color

41.7538, 0.3714, 0.3403

Protanomaly

41.9827, 0.3458, 0.3462

Deuteranomaly

41.8411, 0.3622, 0.3470

Tritanomaly

41.5868, 0.3621, 0.3242

Monochromacy



Original Color

41.7538, 0.3714, 0.3403

Achromatopsia

42.8690, 0.3127, 0.3290

Achromatomaly

42.2308, 0.3319, 0.3330

CSS Examples

Text

The CSS property to change the color of the text to Yxy 41.7538, 0.3714, 0.3403 is called "color". The color property can be set on classes, ids or directly on the HTML element.

This example shows how text in the color `rgb(212, 161, 152)` looks like.

```
.text, #text, p{  
    color:rgb(212, 161, 152)  
}
```

If you want to add a text shadow in that color use the text-shadow property, you can generate a text shadow directly with our [CSS Text Shadow Generator](#).

Here you see how black text with a 4 pixel rgb(212, 161, 152) colored shadow looks like.

```
.shadow{ text-shadow: 4px 4px 2px rgb(212, 161, 152) }
```

Border

The CSS property to change the border of an element to Yxy 41.7538, 0.3714, 0.3403 is called "border". The border property can be set on classes, ids or directly on the HTML element.

This example shows the color as border, it can be applied via the CSS property "border" or "border-color".

```
.border, #border, table{ border:4px solid rgb(212, 161, 152) }
```

If only the border color should be changed use the property border-color.

```
.border{ border-color:rgb(212, 161, 152) }
```

If you want to add a box shadow in that color use:

Here you see how a box with a 4 pixel rgb(212, 161, 152) colored shadow looks like.

```
.boxshadow{ -moz-box-shadow:4px 4px 4px  
4px rgb(212, 161, 152); -webkit-box-  
shadow:4px 4px 4px 4px rgb(212, 161, 152);  
box-shadow:4px 4px 4px 4px rgb(212, 161,  
152) }
```


Background

The CSS property to change the background color of an element to Yxy 41.7538, 0.3714, 0.3403 is called "background". The background property can be set on classes, ids or directly on the HTML element.

```
.background, #background, body{  
background: rgb(212, 161, 152) }
```

If only the background color should be changed can be used:

```
.background{ background-color: rgb(212,  
161, 152) }
```

This example shows the color as background, it is applied via the CSS property "background".

To optimize and compress your CSS code, you can use our [online CSS compressor and optimizer](#) based on csstidy. If you want to create a linear or radial gradient as background or border, check our [CSS Gradient Generator](#).

Hey! You found this booklet interesting? Support Converting Colors with the new Membership Option!

The pro membership hides all ads, plus gives you double the colors in the color bucket, and more awesome pro features!

[Learn more, Memberships starting at \\$2.50/m!](#)

**Follow me
on Twitter!**

@ConvertingColor