

Converting Colors

$Y_{xy}(41.7865, 0.3574, 0.3290)$

Have a look what the booklet for
Yxy(41.7865, 0.3574, 0.3290)
contains.

Yxy(41.8592, 0.3574, 0.3291)	3
Conversions	4
Details	6
Harmonies	12
Previews	24
Color Blindness Simulation	27
CSS Examples	30

Color

Yxy(41.8592, 0.3574, 0.3291)

Conversions

Conversions Part 1

Format	Color
Hex	D0A2A2
RGB	208, 162, 162
RGB Percent	82%, 64%, 64%
CMY	0.1843, 0.3647, 0.3646
CMYK	0.00, 0.22, 0.22, 0.18
HSL	360°, 33%, 73%
HSV	360°, 22%, 82%
XYZ	45.4588, 41.8592, 39.8750
YIQ	175.7540, 27.4160, 9.7520

Conversions

Conversions Part 2

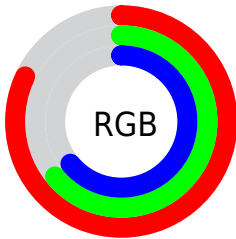
Format	Color
R _Y B	208, 162, 162
Decimal	13673122
CIE Lab	70.77, 16.99, 6.52
CIE LCh	71, 18.201, 20.990
Yxy	41.8592, 0.3574, 0.3291
Android (android.graphics.Color)	4291863202 (0xFFD0A2A2)
YUV	175.7540, -6.7807, 28.2797
Hunter-Lab	64.6987, 12.1954, 8.7476

Details

The Yxy color $41.8592, 0.3574, 0.3291$ is a light color, and the websafe version is hex $CC9999$. A complement of this color would be $57.3539, 0.2801, 0.3289$, and the grayscale version is $43.3086, 0.3127, 0.3290$.

A 20% lighter version of the original color is $75.8955, 0.3407, 0.3291$, and $19.0500, 0.3720, 0.3292$ is the 20% darker color. If you saturate the color by 10%, you get $34.4495, 0.3860, 0.3292$, and if you desaturate by 10%, it is $50.6071, 0.3344, 0.3291$.

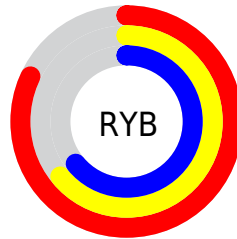
Distribution



Red (82%)

Green (64%)

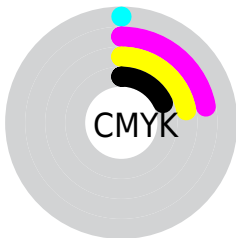
Blue (64%)



Red (82%)

Yellow (64%)

Blue (64%)

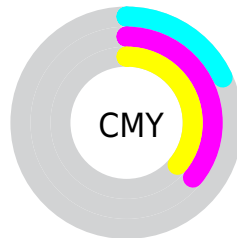


Cyan (0%)

Magenta (22%)

Yellow (22%)

Black (18%)



Cyan (18%)


Magenta (36%)


Yellow (36%)

Brightness & Saturation Gradients


These gradients show how the Yxy color 41.8592, 0.3574, 0.3291 changes by changing the brightness by 10 percent. The first figure shows a shift by +10% for each color and the second figure -10%.


Similar to the brightness gradients but the following saturation gradients show a change of the Yxy color 41.8592, 0.3574, 0.3291 by changing the saturation by 10% instead.


 41.8592, 0.3574,
0.3291

 41.8592, 0.3574,
0.3291

353.8989, 0.3345,
0.3294

 28.9911, 0.3633,
0.3289


 77.9865, 0.3489,
0.3293

 19.0741, 0.3710,
0.3286


 102.0144, 0.3458,
0.3293

 11.7238, 0.3814,
0.3281


130.5311, 0.3432,
0.3294

 6.5559, 0.3963,
0.3271

163.9208, 0.3409,
0.3294

 3.1860, 0.4194,
0.3251

202.5681, 0.3390,
0.3294

 1.2296, 0.4599,
0.3204

246.8573, 0.3373,

 0.0857, 0.8528,

0.3294

0.1472

297.1728, 0.3358,
0.3294

0.0000, 0.0000,
0.0000

41.8592, 0.3574,
0.3291

41.8592, 0.3574,
0.3291

34.4495, 0.3860,
0.3292

50.6071, 0.3344,
0.3291

28.3068, 0.4211,
0.3293

60.7486, 0.3161,
0.3290

23.3618, 0.4627,
0.3294

72.3428, 0.3014,
0.3290

19.5364, 0.5094,
0.3295

85.4438, 0.2897,
0.3290

16.7433, 0.5571,
0.3297

92.1521, 0.2849,
0.3289

■ 14.8823, 0.5988,
0.3298

■ 13.8331, 0.6273,
0.3299

■ 13.4123, 0.6400,
0.3299

Harmonies

Analogous

The Analogous color harmony consists of three colors that are next to each other on the color wheel.



41.8592, 0.3370, 0.3080



41.8592, 0.3574, 0.3291



41.8592, 0.3652, 0.3510

Triad

The Triadic color harmony groups three colors that are evenly spaced from another and form a triangle on the color wheel.



41.8592, 0.3574, 0.3291



41.8592, 0.3131, 0.3698



41.8592, 0.2685, 0.2891

Complementary

The Complementary color scheme is a pair of colors which are on the opposite of each other on the color wheel.



41.8592, 0.3574, 0.3291



57.3539, 0.2801, 0.3289

Split Complementary

Split-complementary colors differ from the complementary color scheme. The scheme consists of three colors, the original color and two neighbors of the complement color.



41.8592, 0.2629, 0.3036



41.8592, 0.3574, 0.3291



41.8592, 0.2879, 0.3512

Square

The Square scheme is like the rectangle color scheme, but the four colors are evenly spaced on the color wheel.



41.8592, 0.3574, 0.3291



41.8592, 0.3390, 0.3759



41.8592, 0.2698, 0.3264



41.8592, 0.2856, 0.2853

Rectangle

The Rectangle color scheme consists of four colors that form a rectangle on the color wheel.



41.8592, 0.3574, 0.3291



41.8592, 0.3622, 0.3635



41.8592, 0.2698, 0.3264



41.8592, 0.2653, 0.2928

Sweetspot

The Sweet Spot groups the original color and five complimentary colors.



41.8611, 0.3574, 0.3291



88.0390, 0.3247, 0.3290



43.6957, 0.3146, 0.2743



18.6347, 0.3258, 0.3290



0.0000, 0.0000, 0.0000



21.4041, 0.3127, 0.3290

Same Dimension

The Same Dimension uses a secret algorithm to generate beautiful new colors.



41.8611, 0.3574, 0.3291



59.9941, 0.3715, 0.3291



50.4011, 0.3516, 0.3564



11.8083, 0.3291, 0.3290



8.3580, 0.6400, 0.3299



0.4674, 0.6398, 0.3298

Inverse Universe

The Inverse Universe completely reimagines the original color for something new.



41.8611, 0.3574, 0.3291



59.9941, 0.3715, 0.3291



47.2582, 0.2780, 0.2999



11.8083, 0.3291, 0.3290



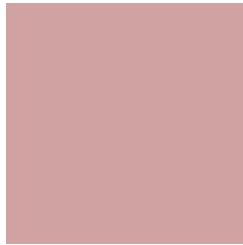
8.3580, 0.6400, 0.3299



0.4674, 0.6398, 0.3298

Previews

White Background



This preview shows how the Yxy color 41.8592, 0.3574, 0.3291 looks on a white background.

Color Contrast Check

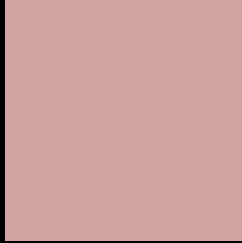
Large Text (above 18pt) WCAG AA × Fail

Any Text WCAG AA × Fail

Large Text (above 18pt) WCAG AAA × Fail

Any Text WCAG AAA × Fail

Black Background



This preview shows how the Yxy color 41.8592, 0.3574, 0.3291 looks on a black background.

Color Contrast Check

Large Text (above 18pt) WCAG AA ✓ Pass

Any Text WCAG AA ✓ Pass

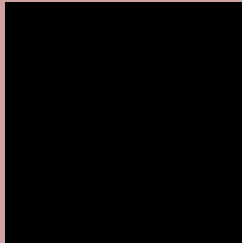
Large Text (above 18pt) WCAG AAA ✓ Pass

Any Text WCAG AAA ✓ Pass

If you want to check with other color combinations, try the [Color Contrast Checker](#).

Yxy 41.8592, 0.3574, 0.3291

Background



This preview shows how black text looks on a background with the Yxy color 41.8592, 0.3574, 0.3291.



This preview shows how white text looks on a background with the Yxy color 41.8592, 0.3574, 0.3291.

Color Blindness Simulation

Color vision deficiency is a very complex topic, and I could not describe the different causes any better than Wikipedia does, so if you want to learn more, you should check out their [article about color blindness](#).

Dichromacy



Original Color

41.8592, 0.3574, 0.3291

Protanopia

42.1793, 0.3214, 0.3358

Deuteranopia

41.8127, 0.3445, 0.3369



Tritanopia

41.7141, 0.3482, 0.3130

Trichromacy



Original Color

41.8592, 0.3574, 0.3291

Protanomaly

41.9479, 0.3339, 0.3330

Deuteranomaly

41.7628, 0.3498, 0.3342

Tritanomaly

41.9096, 0.3519, 0.3192

Monochromacy



Original Color

41.8592, 0.3574, 0.3291

Achromatopsia

43.4154, 0.3127, 0.3290

Achromatomaly

42.7575, 0.3282, 0.3290

CSS Examples

Text

The CSS property to change the color of the text to Yxy 41.8592, 0.3574, 0.3291 is called "color". The color property can be set on classes, ids or directly on the HTML element.

This example shows how text in the color `rgb(208, 162, 162)` looks like.

```
.text, #text, p{  
    color:rgb(208, 162, 162)  
}
```

If you want to add a text shadow in that color use the text-shadow property, you can generate a text shadow directly with our [CSS Text Shadow Generator](#).

Here you see how black text with a 4 pixel rgb(208, 162, 162) colored shadow looks like.

```
.shadow{ text-shadow: 4px 4px 2px rgb(208, 162, 162) }
```

Border

The CSS property to change the border of an element to Yxy 41.8592, 0.3574, 0.3291 is called "border". The border property can be set on classes, ids or directly on the HTML element.

This example shows the color as border, it can be applied via the CSS property "border" or "border-color".

```
.border, #border, table{ border:4px solid rgb(208, 162, 162) }
```

If only the border color should be changed use the property `border-color`.

```
.border{ border-color:rgb(208, 162, 162) }
```

If you want to add a box shadow in that color use:

Here you see how a box with a 4 pixel `rgb(208, 162, 162)` colored shadow looks like.

```
.boxshadow{ -moz-box-shadow:4px 4px 4px  
4px rgb(208, 162, 162); -webkit-box-  
shadow:4px 4px 4px 4px rgb(208, 162, 162);  
box-shadow:4px 4px 4px 4px rgb(208, 162,  
162) }
```


Background

The CSS property to change the background color of an element to Yxy 41.8592, 0.3574, 0.3291 is called "background". The background property can be set on classes, ids or directly on the HTML element.

```
.background, #background, body{  
background: rgb(208, 162, 162) }
```

If only the background color should be changed can be used:

```
.background{ background-color: rgb(208,  
162, 162) }
```

This example shows the color as background, it is applied via the CSS property "background".

To optimize and compress your CSS code, you can use our [online CSS compressor and optimizer](#) based on csstidy. If you want to create a linear or radial gradient as background or border, check our [CSS Gradient Generator](#).

Hey! You found this booklet interesting? Support Converting Colors with the new Membership Option!

The pro membership hides all ads, plus gives you double the colors in the color bucket, and more awesome pro features!

[Learn more, Memberships starting at \\$2.50/m!](#)

**Follow me
on Twitter!**

@ConvertingColor