

# Converting Colors

$Y_{xy}(41.8057, 0.3500, 0.3385)$

Have a look what the booklet for  
Yxy(41.8057, 0.3500, 0.3385)  
contains.

<b>Yxy(41.7814, 0.3495, 0.3382)</b> .....	3
<b>Conversions</b> .....	4
<b>Details</b> .....	6
<b>Harmonies</b> .....	12
<b>Previews</b> .....	24
<b>Color Blindness Simulation</b> .....	27
<b>CSS Examples</b> .....	30

# Color

**Yxy(41.7814, 0.3495, 0.3382)**

# Conversions

## Conversions Part 1

Format	Color
Hex	C6A69F
RGB	198, 166, 159
RGB Percent	78%, 65%, 62%
CMY	0.2236, 0.3490, 0.3765
CMYK	0.00, 0.16, 0.20, 0.22
HSL	11°, 25%, 70%
HSV	11°, 20%, 78%
XYZ	43.1774, 41.7814, 38.5817
YIQ	174.7700, 21.3190, 4.6070

# Conversions

## Conversions Part 2

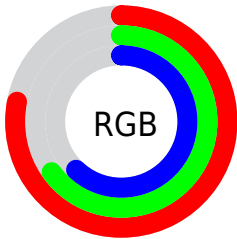
Format	Color
<b>RYB</b>	198, 168, 159
Decimal	13018783
CIELab	70.72, 10.57, 7.99
CIELCh	71, 13.252, 37.086
Yxy	41.7814, 0.3495, 0.3382
Android (android.graphics.Color)	4291208863 (0xFFC6A69F)
YUV	174.7700, -7.7746, 20.3727
Hunter-Lab	64.6385, 6.1174, 9.8577

# Details

The Yxy color **41.7814, 0.3495, 0.3382** is a light color, and the websafe version is hex **CC9999**. A complement of this color would be **48.6841, 0.2830, 0.3196**, and the grayscale version is **42.7768, 0.3127, 0.3290**.

A 20% lighter version of the original color is **77.8279, 0.3422, 0.3362**, and **19.0466, 0.3607, 0.3397** is the 20% darker color. If you saturate the color by 10%, you get **35.6170, 0.3742, 0.3432**, and if you desaturate by 10%, it is **48.8041, 0.3291, 0.3334**.

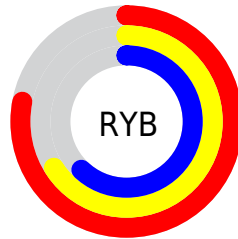
# Distribution



Red (78%)

Green (65%)

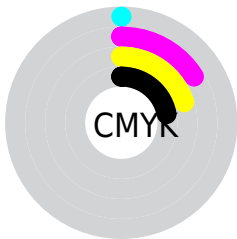
Blue (62%)



Red (78%)

Yellow (66%)

Blue (62%)

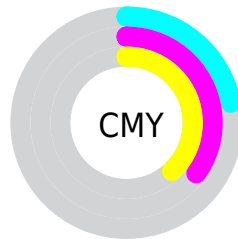


Cyan (0%)

Magenta (16%)

Yellow (20%)

Black (22%)



Cyan (22%)

Magenta (35%)


Yellow (38%)


# Brightness & Saturation Gradients

These gradients show how the Yxy color 41.7814, 0.3495, 0.3382 changes by changing the brightness by 10 percent. The first figure shows a shift by +10% for each color and the second figure -10%.


Similar to the brightness gradients but the following saturation gradients show a change of the Yxy color 41.7814, 0.3495, 0.3382 by changing the saturation by 10% instead.




 41.7814, 0.3495,  
0.3382

 41.7814, 0.3495,  
0.3382


353.5760, 0.3306,  
0.3338

 28.9302, 0.3544,  
0.3392


 77.8687, 0.3425,  
0.3366

 19.0280, 0.3607,  
0.3405


 101.8735, 0.3400,  
0.3360

 11.6905, 0.3693,  
0.3422


130.3650, 0.3378,  
0.3355

 6.5333, 0.3816,  
0.3444

163.7275, 0.3359,  
0.3351

 3.1720, 0.4006,  
0.3472

202.3455, 0.3343,  
0.3347

 1.2222, 0.4360,  
0.3525

246.6033, 0.3329,

 0.0797, 0.8073,

0.3344

0.1927

296.8853, 0.3317,  
0.3341

0.0000, 0.0000,  
0.0000

41.7814, 0.3495,  
0.3382

41.7814, 0.3495,  
0.3382

35.6170, 0.3742,  
0.3432

48.8041, 0.3291,  
0.3334

30.2725, 0.4037,  
0.3482

56.7106, 0.3123,  
0.3289

25.7148, 0.4384,  
0.3527

65.5323, 0.2984,  
0.3247

21.9063, 0.4777,  
0.3561

75.2972, 0.2869,  
0.3210

18.8063, 0.5197,  
0.3575

85.8393, 0.2788,  
0.3206

■ 16.3703, 0.5607,  
0.3561

■ 90.7429, 0.2794,  
0.3289

■ 14.5483, 0.5957,  
0.3514

■ 13.2775, 0.6211,  
0.3447

■ 13.2464, 0.6217,  
0.3445

# Harmonies

## Analogous

The Analogous color harmony consists of three colors that are next to each other on the color wheel.



41.7814, 0.3393, 0.3218



41.7814, 0.3495, 0.3382



41.7814, 0.3495, 0.3529

# Triad

The Triadic color harmony groups three colors that are evenly spaced from another and form a triangle on the color wheel.



41.7814, 0.3495, 0.3382



41.7814, 0.3029, 0.3521



41.7814, 0.2862, 0.2972

# Complementary

The Complementary color scheme is a pair of colors which are on the opposite of each other on the color wheel.



41.7814, 0.3495, 0.3382



48.6841, 0.2830, 0.3196

# Split Complementary

Split-complementary colors differ from the complementary color scheme. The scheme consists of three colors, the original color and two neighbors of the complement color.



41.7814, 0.2771, 0.3040



41.7814, 0.3495, 0.3382



41.7814, 0.2866, 0.3357

# Square

The Square scheme is like the rectangle color scheme, but the four colors are evenly spaced on the color wheel.



41.7814, 0.3495, 0.3382



41.7814, 0.3222, 0.3617



41.7814, 0.2773, 0.3180



41.7814, 0.3024, 0.2986



# Rectangle

The Rectangle color scheme consists of four colors that form a rectangle on the color wheel.



41.7814, 0.3495, 0.3382



41.7814, 0.3437, 0.3597



41.7814, 0.2773, 0.3180



41.7814, 0.2822, 0.2985

# Sweetspot

The Sweet Spot groups the original color and five complimentary colors.



41.7833, 0.3495, 0.3382



91.3112, 0.3226, 0.3317



40.5762, 0.3207, 0.2883



19.3495, 0.3238, 0.3320



0.0000, 0.0000, 0.0000



21.4041, 0.3127, 0.3290



# Same Dimension

The Same Dimension uses a secret algorithm to generate beautiful new colors.



41.7833, 0.3495, 0.3382



68.7299, 0.3604, 0.3405



49.1951, 0.3450, 0.3620



10.9411, 0.3285, 0.3332



8.7075, 0.6198, 0.3461



0.5094, 0.5815, 0.3764



# Inverse Universe

The Inverse Universe completely reimagines the original color for something new.



48.6841, 0.2830, 0.3196



83.3431, 0.2762, 0.3171



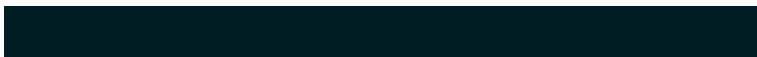
40.9436, 0.2814, 0.2937



11.7297, 0.2984, 0.3247



19.6390, 0.2086, 0.2709

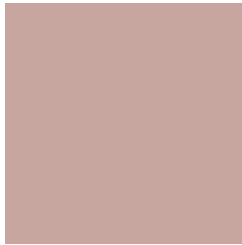


1.0172, 0.2123, 0.2843



# Previews

## White Background



This preview shows how the Yxy color 41.7814, 0.3495, 0.3382 looks on a white background.

## Color Contrast Check

Large Text (above 18pt) WCAG AA × Fail

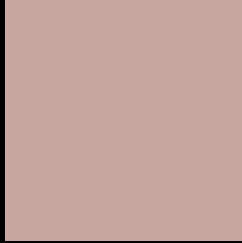
Any Text WCAG AA × Fail

Large Text (above 18pt) WCAG AAA × Fail

Any Text WCAG AAA × Fail



# Black Background



This preview shows how the Yxy color 41.7814, 0.3495, 0.3382 looks on a black background.

## Color Contrast Check

Large Text (above 18pt) WCAG AA ✓ Pass

Any Text WCAG AA ✓ Pass

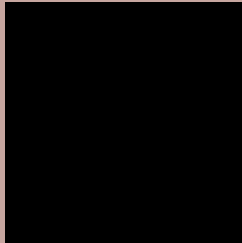
Large Text (above 18pt) WCAG AAA ✓ Pass

Any Text WCAG AAA ✓ Pass

If you want to check with other color combinations, try the [Color Contrast Checker](#).

**Yxy 41.7814, 0.3495, 0.3382**

## Background



This preview shows how black text looks on a background with the Yxy color 41.7814, 0.3495, 0.3382.



This preview shows how white text looks on a background with the Yxy color 41.7814, 0.3495, 0.3382.

# Color Blindness Simulation

Color vision deficiency is a very complex topic, and I could not describe the different causes any better than Wikipedia does, so if you want to learn more, you should check out their [article about color blindness](#).

## Dichromacy



### Original Color

41.7814, 0.3495, 0.3382

### Protanopia

42.0795, 0.3274, 0.3440

### Deuteranopia

41.7427, 0.3464, 0.3395



## Tritanopia

41.6083, 0.3362, 0.3126

# Trichromacy



## Original Color

41.7814, 0.3495, 0.3382

## Protanomaly

41.7618, 0.3353, 0.3411

## Deuteranomaly

41.8764, 0.3473, 0.3395

## Tritanomaly

41.5953, 0.3406, 0.3214

# Monochromacy



## Original Color

41.7814, 0.3495, 0.3382

## Achromatopsia

42.8690, 0.3127, 0.3290

## Achromatomaly

42.4369, 0.3252, 0.3330

# CSS Examples

## Text

The CSS property to change the color of the text to Yxy 41.7814, 0.3495, 0.3382 is called "color". The color property can be set on classes, ids or directly on the HTML element.

This example shows how text in the color `rgb(198, 166, 159)` looks like.

```
.text, #text, p{  
    color:rgb(198, 166, 159)  
}
```

If you want to add a text shadow in that color use the text-shadow property, you can generate a text shadow directly with our [CSS Text Shadow Generator](#).

Here you see how black text with a 4 pixel rgb(198, 166, 159) colored shadow looks like.

```
.shadow{ text-shadow: 4px 4px 2px rgb(198, 166, 159) }
```

## Border

The CSS property to change the border of an element to Yxy 41.7814, 0.3495, 0.3382 is called "border". The border property can be set on classes, ids or directly on the HTML element.

This example shows the color as border, it can be applied via the CSS property "border" or "border-color".

```
.border, #border, table{ border:4px solid rgb(198, 166, 159) }
```

If only the border color should be changed use the property `border-color`.

```
.border{ border-color:rgb(198, 166, 159) }
```

If you want to add a box shadow in that color use:

Here you see how a box with a 4 pixel `rgb(198, 166, 159)` colored shadow looks like.

```
.boxshadow{ -moz-box-shadow:4px 4px 4px  
4px rgb(198, 166, 159); -webkit-box-  
shadow:4px 4px 4px 4px rgb(198, 166, 159);  
box-shadow:4px 4px 4px 4px rgb(198, 166,  
159) }
```



# Background

The CSS property to change the background color of an element to Yxy 41.7814, 0.3495, 0.3382 is called "background". The background property can be set on classes, ids or directly on the HTML element.

```
.background, #background, body{  
background: rgb(198, 166, 159) }
```

If only the background color should be changed can be used:

```
.background{ background-color: rgb(198,  
166, 159) }
```

This example shows the color as background, it is applied via the CSS property "background".

To optimize and compress your CSS code, you can use our [online CSS compressor and optimizer](#) based on csstidy. If you want to create a linear or radial gradient as background or border, check our [CSS Gradient Generator](#).

Hey! You found this booklet interesting? Support Converting Colors with the new Membership Option!

The pro membership hides all ads, plus gives you double the colors in the color bucket, and more awesome pro features!

**[Learn more, Memberships starting at \\$2.50/m!](#)**

**Follow me  
on Twitter!**

@ConvertingColor