

Converting Colors

$Yxy(41.9111, 0.3338, 0.3280)$

Have a look what the booklet for
Yxy(41.9111, 0.3338, 0.3280)
contains.

Yxy(41.9462, 0.3333, 0.3278)	3
Conversions	4
Details	6
Harmonies	12
Previews	24
Color Blindness Simulation	27
CSS Examples	30

Color

Yxy(41.9462, 0.3333, 0.3278)

Conversions

Conversions Part 1

Format	Color
Hex	BFA8A9
RGB	191, 168, 169
RGB Percent	75%, 66%, 66%
CMY	0.2509, 0.3412, 0.3374
CMYK	0.00, 0.12, 0.12, 0.25
HSL	357°, 15%, 70%
HSV	357°, 12%, 75%
XYZ	42.6500, 41.9462, 43.3666
YIQ	174.9910, 13.3870, 5.1870

Conversions

Conversions Part 2

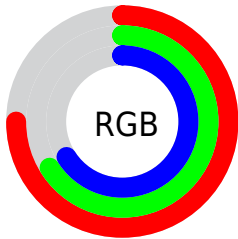
Format	Color
RYB	191, 168, 169
Decimal	12560553
CIELab	70.83, 8.51, 2.56
CIELCh	71, 8.887, 16.763
Yxy	41.9462, 0.3333, 0.3278
Android (android.graphics.Color)	4290750633 (0xFFBFA8A9)
YUV	174.9910, -2.9536, 14.0399
Hunter-Lab	64.7659, 4.2065, 5.6361

Details

The Yxy color **41.9462, 0.3333, 0.3278** is a light color, and the websafe version is hex **999999**. A complement of this color would be **49.3138, 0.2952, 0.3302**, and the grayscale version is **42.8760, 0.3127, 0.3290**.

A 20% lighter version of the original color is **77.9313, 0.3292, 0.3280**, and **19.0935, 0.3389, 0.3273** is the 20% darker color. If you saturate the color by 10%, you get **34.7655, 0.3551, 0.3267**, and if you desaturate by 10%, it is **50.2628, 0.3158, 0.3288**.

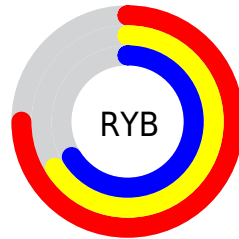
Distribution



Red (75%)

Green (66%)

Blue (66%)



Red (75%)

Yellow (66%)

Blue (66%)

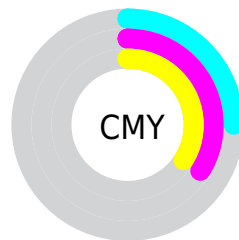


Cyan (0%)

Magenta (12%)

Yellow (12%)

Black (25%)



Cyan (25%)


Magenta (34%)


Yellow (34%)

Brightness & Saturation Gradients


These gradients show how the Yxy color 41.9462, 0.3333, 0.3278 changes by changing the brightness by 10 percent. The first figure shows a shift by +10% for each color and the second figure -10%.


Similar to the brightness gradients but the following saturation gradients show a change of the Yxy color 41.9462, 0.3333, 0.3278 by changing the saturation by 10% instead.


 41.9462, 0.3333,
0.3278


 41.9462, 0.3333,
0.3278


354.2599, 0.3228,
0.3285

 29.0592, 0.3360,
0.3276


 78.1182, 0.3294,
0.3281

 19.1256, 0.3395,
0.3273


 102.1719, 0.3280,
0.3282

 11.7611, 0.3443,
0.3269


130.7167, 0.3268,
0.3282

 6.5812, 0.3511,
0.3263

164.1369, 0.3257,
0.3283

 3.2016, 0.3616,
0.3253

202.8170, 0.3249,
0.3284

 1.2379, 0.3801,
0.3232

247.1412, 0.3241,

 0.0923, 0.7619,

0.3284

0.2381

297.4940, 0.3234,
0.3285

0.0000, 0.0000,
0.0000

41.9462, 0.3333,
0.3278

41.9462, 0.3333,
0.3278

34.7655, 0.3551,
0.3267

50.2628, 0.3158,
0.3288

28.6662, 0.3821,
0.3257

59.7558, 0.3018,
0.3297

23.5977, 0.4153,
0.3247

70.4705, 0.2905,
0.3306

19.5030, 0.4548,
0.3239

82.4480, 0.2814,
0.3313

16.3196, 0.4995,
0.3235

89.8184, 0.2757,
0.3289

■ 13.9779, 0.5461,
0.3238

■ 12.3982, 0.5888,
0.3249

■ 11.4855, 0.6205,
0.3267

■ 11.0959, 0.6359,
0.3276

Harmonies

Analogous

The Analogous color harmony consists of three colors that are next to each other on the color wheel.



41.9462, 0.3230, 0.3173



41.9462, 0.3333, 0.3278



41.9462, 0.3380, 0.3388

Triad

The Triadic color harmony groups three colors that are evenly spaced from another and form a triangle on the color wheel.



41.9462, 0.3333, 0.3278



41.9462, 0.3150, 0.3492



41.9462, 0.2901, 0.3102

Complementary

The Complementary color scheme is a pair of colors which are on the opposite of each other on the color wheel.



41.9462, 0.3333, 0.3278



49.3138, 0.2952, 0.3302

Split Complementary

Split-complementary colors differ from the complementary color scheme. The scheme consists of three colors, the original color and two neighbors of the complement color.



41.9462, 0.2881, 0.3184



41.9462, 0.3333, 0.3278



41.9462, 0.3023, 0.3412

Square

The Square scheme is like the rectangle color scheme, but the four colors are evenly spaced on the color wheel.



41.9462, 0.3333, 0.3278



41.9462, 0.3273, 0.3515



41.9462, 0.2925, 0.3297



41.9462, 0.2980, 0.3072

Rectangle

The Rectangle color scheme consists of four colors that form a rectangle on the color wheel.



41.9462, 0.3333, 0.3278



41.9462, 0.3373, 0.3451



41.9462, 0.2925, 0.3297



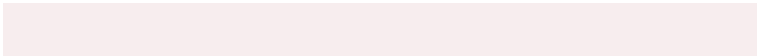
41.9462, 0.2887, 0.3124

Sweetspot

The Sweet Spot groups the original color and five complimentary colors.



41.9481, 0.3333, 0.3278



86.8360, 0.3191, 0.3286



42.6985, 0.3131, 0.2996



18.8102, 0.3203, 0.3285



97.7402, 0.3127, 0.3290



20.4902, 0.3127, 0.3290

Same Dimension

The Same Dimension uses a secret algorithm to generate beautiful new colors.



41.9481, 0.3333, 0.3278



72.1497, 0.3376, 0.3276



45.8895, 0.3325, 0.3425



9.5427, 0.3282, 0.3281



7.2937, 0.6348, 0.3271



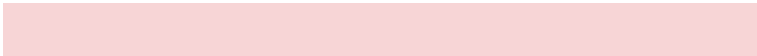
0.2879, 0.6150, 0.3161

Inverse Universe

The Inverse Universe completely reimagines the original color for something new.



41.9481, 0.3333, 0.3278



72.1497, 0.3376, 0.3276



44.9972, 0.2942, 0.3152



9.5427, 0.3282, 0.3281



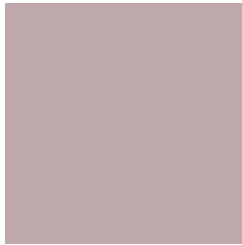
7.2937, 0.6348, 0.3271



0.2879, 0.6150, 0.3161

Previews

White Background



This preview shows how the Yxy color 41.9462, 0.3333, 0.3278 looks on a white background.

Color Contrast Check

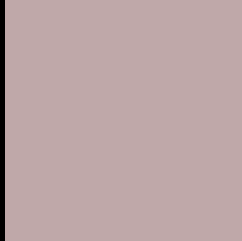
Large Text (above 18pt) WCAG AA × Fail

Any Text WCAG AA × Fail

Large Text (above 18pt) WCAG AAA × Fail

Any Text WCAG AAA × Fail

Black Background



This preview shows how the Yxy color 41.9462, 0.3333, 0.3278 looks on a black background.

Color Contrast Check

Large Text (above 18pt) WCAG AA ✓ Pass

Any Text WCAG AA ✓ Pass

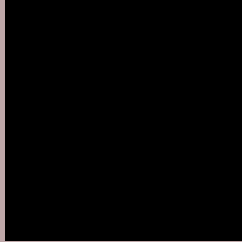
Large Text (above 18pt) WCAG AAA ✓ Pass

Any Text WCAG AAA ✓ Pass

If you want to check with other color combinations, try the [Color Contrast Checker](#).

Yxy 41.9462, 0.3333, 0.3278

Background



This preview shows how black text looks on a background with the Yxy color 41.9462, 0.3333, 0.3278.



This preview shows how white text looks on a background with the Yxy color 41.9462, 0.3333, 0.3278.

Color Blindness Simulation

Color vision deficiency is a very complex topic, and I could not describe the different causes any better than Wikipedia does, so if you want to learn more, you should check out their [article about color blindness](#).

Dichromacy



Original Color

41.9462, 0.3333, 0.3278

Protanopia

42.2128, 0.3171, 0.3304

Deuteranopia

42.0763, 0.3342, 0.3278



Tritanopia

41.7336, 0.3255, 0.3122

Trichromacy



Original Color

41.9462, 0.3333, 0.3278

Protanomaly

42.0112, 0.3227, 0.3290

Deuteranomaly

42.0763, 0.3342, 0.3278

Tritanomaly

41.9390, 0.3290, 0.3187

Monochromacy



Original Color

41.9462, 0.3333, 0.3278

Achromatopsia

42.8690, 0.3127, 0.3290

Achromatomaly

42.3459, 0.3200, 0.3277

CSS Examples

Text

The CSS property to change the color of the text to Yxy 41.9462, 0.3333, 0.3278 is called "color". The color property can be set on classes, ids or directly on the HTML element.

This example shows how text in the color `rgb(191, 168, 169)` looks like.

```
.text, #text, p{  
    color:rgb(191, 168, 169)  
}
```

If you want to add a text shadow in that color use the text-shadow property, you can generate a text shadow directly with our [CSS Text Shadow Generator](#).

Here you see how black text with a 4 pixel rgb(191, 168, 169) colored shadow looks like.

```
.shadow{ text-shadow: 4px 4px 2px rgb(191, 168, 169) }
```

Border

The CSS property to change the border of an element to Yxy 41.9462, 0.3333, 0.3278 is called "border". The border property can be set on classes, ids or directly on the HTML element.

This example shows the color as border, it can be applied via the CSS property "border" or "border-color".

```
.border, #border, table{ border:4px solid rgb(191, 168, 169) }
```

If only the border color should be changed use the property `border-color`.

```
.border{ border-color:rgb(191, 168, 169) }
```

If you want to add a box shadow in that color use:

Here you see how a box with a 4 pixel `rgb(191, 168, 169)` colored shadow looks like.

```
.boxshadow{ -moz-box-shadow:4px 4px 4px  
4px rgb(191, 168, 169); -webkit-box-  
shadow:4px 4px 4px 4px rgb(191, 168, 169);  
box-shadow:4px 4px 4px 4px rgb(191, 168,  
169) }
```


Background

The CSS property to change the background color of an element to Yxy 41.9462, 0.3333, 0.3278 is called "background". The background property can be set on classes, ids or directly on the HTML element.

```
.background, #background, body{  
background: rgb(191, 168, 169) }
```

If only the background color should be changed can be used:

```
.background{ background-color: rgb(191,  
168, 169) }
```

This example shows the color as background, it is applied via the CSS property "background".

To optimize and compress your CSS code, you can use our [online CSS compressor and optimizer](#) based on csstidy. If you want to create a linear or radial gradient as background or border, check our [CSS Gradient Generator](#).

Hey! You found this booklet interesting? Support Converting Colors with the new Membership Option!

The pro membership hides all ads, plus gives you double the colors in the color bucket, and more awesome pro features!

[Learn more, Memberships starting at \\$2.50/m!](#)

**Follow me
on Twitter!**

@ConvertingColor