

Converting Colors

$Y_{xy}(42.1875, 0.3928, 0.3831)$

Have a look what the booklet for
Yxy(42.1875, 0.3928, 0.3831)
contains.

Yxy(42.1124, 0.3932, 0.3831)	3
Conversions	4
Details	6
Harmonies	12
Previews	24
Color Blindness Simulation	27
CSS Examples	30

Color

Yxy(42.1124, 0.3932, 0.3831)

Conversions

Conversions Part 1

Format	Color
Hex	D0A67B
RGB	208, 166, 123
RGB Percent	82%, 65%, 48%
CMY	0.1843, 0.3490, 0.5176
CMYK	0.00, 0.20, 0.41, 0.18
HSL	30°, 47%, 65%
HSV	30°, 41%, 82%
XYZ	43.2226, 42.1124, 24.5903
YIQ	173.6560, 38.8350, -4.4690

Conversions

Conversions Part 2

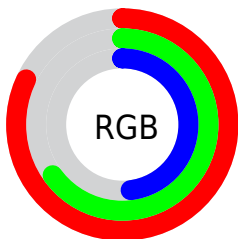
Format	Color
R_{YB}	206, 208, 123
Decimal	13674107
CIE Lab	70.95, 9.72, 28.12
CIE LCh	71, 29.748, 70.927
Yxy	42.1124, 0.3932, 0.3831
Android (android.graphics.Color)	4291864187 (0xFFD0A67B)
YUV	173.6560, -24.9734, 30.1197
Hunter-Lab	64.8941, 5.3252, 22.9591

Details

The Yxy color **42.1124, 0.3932, 0.3831** is a light color, and the websafe version is hex **CC9966**. A complement of this color would be **35.6719, 0.2473, 0.2672**, and the grayscale version is **42.2583, 0.3127, 0.3290**.

A 20% lighter version of the original color is **76.1075, 0.3694, 0.3752**, and **19.2044, 0.4163, 0.3957** is the 20% darker color. If you saturate the color by 10%, you get **38.0596, 0.4187, 0.3958**, and if you desaturate by 10%, it is **46.5783, 0.3698, 0.3696**.

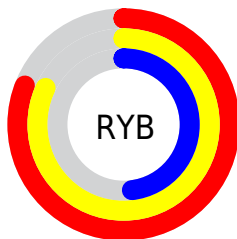
Distribution



Red (82%)

Green (65%)

Blue (48%)



Red (81%)

Yellow (82%)

Blue (48%)

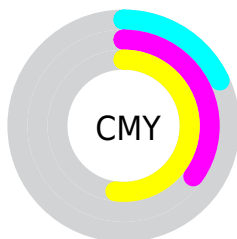


Cyan (0%)

Magenta (20%)

Yellow (41%)

Black (18%)



Cyan (18%)


Magenta (35%)


Yellow (52%)

Brightness & Saturation Gradients


These gradients show how the Yxy color 42.1124, 0.3932, 0.3831 changes by changing the brightness by 10 percent. The first figure shows a shift by +10% for each color and the second figure -10%.

Similar to the brightness gradients but the following saturation gradients show a change of the Yxy color 42.1124, 0.3932, 0.3831 by changing the saturation by 10% instead.


 42.1124, 0.3932,
0.3831

 42.1124, 0.3932,
0.3831

354.9487, 0.3524,
0.3569


 29.1893, 0.4034,
0.3892


 78.3697, 0.3783,
0.3739

 19.2241, 0.4164,
0.3967


 102.4727, 0.3727,
0.3703

 11.8323, 0.4335,
0.4059

 131.0712, 0.3680,
0.3673

 6.6296, 0.4565,
0.4172

164.5494, 0.3640,
0.3646

 3.2316, 0.4918,
0.4332

203.2919, 0.3605,
0.3623

 1.2538, 0.5474,
0.4526

247.6830, 0.3574,

 0.1050, 0.7625,

0.3603

0.2375

298.1071, 0.3547,
0.3585

0.0000, 0.0000,
0.0000

42.1124, 0.3932,
0.3831

42.1124, 0.3932,
0.3831

38.0596, 0.4187,
0.3958

46.5783, 0.3698,
0.3696

34.4000, 0.4456,
0.4065

51.4646, 0.3489,
0.3559

31.1205, 0.4728,
0.4141


56.7857, 0.3303,
0.3427

28.2045, 0.4989,
0.4174

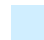
62.5533, 0.3140,
0.3301

25.6336, 0.5220,
0.4153


68.7789, 0.2998,
0.3183

 23.5614, 0.5401,
0.4094

 75.4733, 0.2874,
0.3074

 81.7398, 0.2839,
0.3110

 87.8927, 0.2845,
0.3219

 92.1490, 0.2849,
0.3289

Harmonies

Analogous

The Analogous color harmony consists of three colors that are next to each other on the color wheel.



42.1124, 0.3973, 0.3510



42.1124, 0.3932, 0.3831



42.1124, 0.3667, 0.4038

Triad

The Triadic color harmony groups three colors that are evenly spaced from another and form a triangle on the color wheel.



42.1124, 0.3932, 0.3831



42.1124, 0.2516, 0.3377



42.1124, 0.2941, 0.2658

Complementary

The Complementary color scheme is a pair of colors which are on the opposite of each other on the color wheel.



42.1124, 0.3932, 0.3831



35.6719, 0.2473, 0.2672

Split Complementary

Split-complementary colors differ from the complementary color scheme. The scheme consists of three colors, the original color and two neighbors of the complement color.



42.1124, 0.2581, 0.2596



42.1124, 0.3932, 0.3831



42.1124, 0.2349, 0.2976

Square

The Square scheme is like the rectangle color scheme, but the four colors are evenly spaced on the color wheel.



42.1124, 0.3932, 0.3831



42.1124, 0.2846, 0.3784



42.1124, 0.2373, 0.2701



42.1124, 0.3378, 0.2861

Rectangle

The Rectangle color scheme consists of four colors that form a rectangle on the color wheel.



42.1124, 0.3932, 0.3831



42.1124, 0.3409, 0.4064



42.1124, 0.2373, 0.2701



42.1124, 0.2808, 0.2620

Sweetspot

The Sweet Spot groups the original color and five complimentary colors.



42.1144, 0.3932, 0.3831



88.9149, 0.3325, 0.3443



30.3109, 0.3636, 0.2760



18.7867, 0.3349, 0.3461



0.0000, 0.0000, 0.0000



21.4041, 0.3127, 0.3290

Same Dimension

The Same Dimension uses a secret algorithm to generate beautiful new colors.



42.1144, 0.3932, 0.3831



61.1337, 0.4153, 0.3942



59.9478, 0.3734, 0.4293



12.7828, 0.3278, 0.3408



14.8796, 0.5380, 0.4111



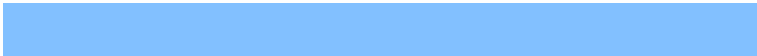
0.9907, 0.5105, 0.4329

Inverse Universe

The Inverse Universe completely reimagines the original color for something new.



35.6719, 0.2473, 0.2672



49.5713, 0.2334, 0.2511



22.9321, 0.2373, 0.2043



12.3684, 0.2982, 0.3169



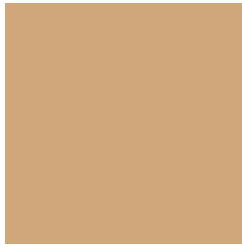
9.0468, 0.1769, 0.1569



0.6645, 0.1863, 0.1905

Previews

White Background



This preview shows how the Yxy color 42.1124, 0.3932, 0.3831 looks on a white background.

Color Contrast Check

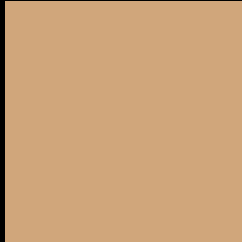
Large Text (above 18pt) WCAG AA × Fail

Any Text WCAG AA × Fail

Large Text (above 18pt) WCAG AAA × Fail

Any Text WCAG AAA × Fail

Black Background



This preview shows how the Yxy color 42.1124, 0.3932, 0.3831 looks on a black background.

Color Contrast Check

Large Text (above 18pt) WCAG AA ✓ Pass

Any Text WCAG AA ✓ Pass

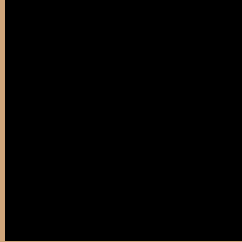
Large Text (above 18pt) WCAG AAA ✓ Pass

Any Text WCAG AAA ✓ Pass

If you want to check with other color combinations, try the [Color Contrast Checker](#).

Yxy 42.1124, 0.3932, 0.3831

Background



This preview shows how black text looks on a background with the Yxy color 42.1124, 0.3932, 0.3831.



This preview shows how white text looks on a background with the Yxy color 42.1124, 0.3932, 0.3831.

Color Blindness Simulation

Color vision deficiency is a very complex topic, and I could not describe the different causes any better than Wikipedia does, so if you want to learn more, you should check out their [article about color blindness](#).

Dichromacy



Original Color

42.1124, 0.3932, 0.3831

Protanopia

42.3433, 0.3662, 0.3936

Deuteranopia

41.9679, 0.3922, 0.3833



Tritanopia

42.2663, 0.3531, 0.3145

Trichromacy



Original Color

42.1124, 0.3932, 0.3831

Protanomaly

42.2086, 0.3762, 0.3895

Deuteranomaly

41.9679, 0.3922, 0.3833

Tritanomaly

42.0226, 0.3681, 0.3391

Monochromacy



Original Color

42.1124, 0.3932, 0.3831

Achromatopsia

42.3268, 0.3127, 0.3290

Achromatomaly

41.9315, 0.3405, 0.3505

CSS Examples

Text

The CSS property to change the color of the text to Yxy 42.1124, 0.3932, 0.3831 is called "color". The color property can be set on classes, ids or directly on the HTML element.

This example shows how text in the color `rgb(208, 166, 123)` looks like.

```
.text, #text, p{  
    color:rgb(208, 166, 123)  
}
```

If you want to add a text shadow in that color use the text-shadow property, you can generate a text shadow directly with our [CSS Text Shadow Generator](#).

Here you see how black text with a 4 pixel rgb(208, 166, 123) colored shadow looks like.

```
.shadow{ text-shadow: 4px 4px 2px rgb(208, 166, 123) }
```

Border

The CSS property to change the border of an element to Yxy 42.1124, 0.3932, 0.3831 is called "border". The border property can be set on classes, ids or directly on the HTML element.

This example shows the color as border, it can be applied via the CSS property "border" or "border-color".

```
.border, #border, table{ border:4px solid rgb(208, 166, 123) }
```

If only the border color should be changed use the property border-color.

```
.border{ border-color:rgb(208, 166, 123) }
```

If you want to add a box shadow in that color use:

Here you see how a box with a 4 pixel rgb(208, 166, 123) colored shadow looks like.

```
.boxshadow{ -moz-box-shadow:4px 4px 4px  
4px rgb(208, 166, 123); -webkit-box-  
shadow:4px 4px 4px 4px rgb(208, 166, 123);  
box-shadow:4px 4px 4px 4px rgb(208, 166,  
123) }
```


Background

The CSS property to change the background color of an element to Yxy 42.1124, 0.3932, 0.3831 is called "background". The background property can be set on classes, ids or directly on the HTML element.

```
.background, #background, body{  
background: rgb(208, 166, 123) }
```

If only the background color should be changed can be used:

```
.background{ background-color: rgb(208,  
166, 123) }
```

This example shows the color as background, it is applied via the CSS property "background".

To optimize and compress your CSS code, you can use our [online CSS compressor and optimizer](#) based on csstidy. If you want to create a linear or radial gradient as background or border, check our [CSS Gradient Generator](#).

Hey! You found this booklet interesting? Support Converting Colors with the new Membership Option!

The pro membership hides all ads, plus gives you double the colors in the color bucket, and more awesome pro features!

[Learn more, Memberships starting at \\$2.50/m!](#)

**Follow me
on Twitter!**

@ConvertingColor