

# Converting Colors

$Yxy(42.3106, 0.3662, 0.3474)$

Have a look what the booklet for  
Yxy(42.3106, 0.3662, 0.3474)  
contains.

<b>Yxy(42.4100, 0.3661, 0.3468)</b> .....	3
<b><i>Conversions</i></b> .....	4
<b><i>Details</i></b> .....	6
<b><i>Harmonies</i></b> .....	12
<b><i>Previews</i></b> .....	24
<b><i>Color Blindness Simulation</i></b> .....	27
<b><i>CSS Examples</i></b> .....	30

# Color

**Yxy(42.4100, 0.3661, 0.3468)**

# Conversions

## Conversions Part 1

Format	Color
Hex	CFA597
RGB	207, 165, 151
RGB Percent	81%, 65%, 59%
CMY	0.1883, 0.3529, 0.4078
CMYK	0.00, 0.20, 0.27, 0.19
HSL	15°, 37%, 70%
HSV	15°, 27%, 81%
XYZ	44.7702, 42.4100, 35.1093
YIQ	175.9620, 29.5260, 4.5500

# Conversions

## Conversions Part 2

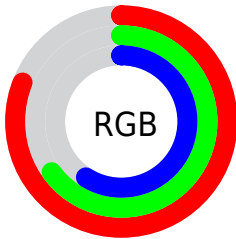
Format	Color
R <sub>Y</sub> B	207, 170, 151
Decimal	13608343
CIE Lab	71.15, 13.38, 13.12
CIE LCh	71, 18.734, 44.441
Yxy	42.4100, 0.3661, 0.3468
Android (android.graphics.Color)	4291798423 (0xFFCFA597)
YUV	175.9620, -12.3063, 27.2203
Hunter-Lab	65.1230, 8.7485, 13.6214

# Details

The Yxy color  $42.4100, 0.3661, 0.3468$  is a light color, and the websafe version is hex `CC9999`. A complement of this color would be  $49.2174, 0.2718, 0.3104$ , and the grayscale version is  $43.4498, 0.3127, 0.3290$ .

A 20% lighter version of the original color is  $76.8542, 0.3488, 0.3443$ , and  $19.4058, 0.3829, 0.3513$  is the 20% darker color. If you saturate the color by 10%, you get  $36.5332, 0.3931, 0.3537$ , and if you desaturate by 10%, it is  $49.0883, 0.3433, 0.3399$ .

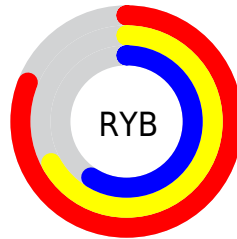
# Distribution



Red (81%)

Green (65%)

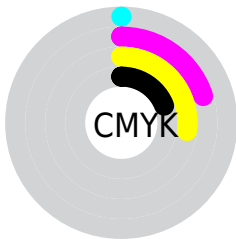
Blue (59%)



Red (81%)

Yellow (67%)

Blue (59%)

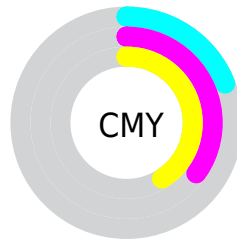


Cyan (0%)

Magenta (20%)

Yellow (27%)

Black (19%)



Cyan (19%)

Magenta (35%)


Yellow (41%)


# Brightness & Saturation Gradients

These gradients show how the Yxy color 42.4100, 0.3661, 0.3468 changes by changing the brightness by 10 percent. The first figure shows a shift by +10% for each color and the second figure -10%.


Similar to the brightness gradients but the following saturation gradients show a change of the Yxy color 42.4100, 0.3661, 0.3468 by changing the saturation by 10% instead.




 42.4100, 0.3661,  
0.3468


 42.4100, 0.3661,  
0.3468


356.1797, 0.3388,  
0.3383

 29.4225, 0.3731,  
0.3488


 78.8198, 0.3560,  
0.3438

 19.4006, 0.3822,  
0.3512


 103.0108, 0.3523,  
0.3427

 11.9601, 0.3945,  
0.3542


131.7051, 0.3491,  
0.3417

 6.7165, 0.4120,  
0.3580

165.2871, 0.3464,  
0.3408

 3.2855, 0.4386,  
0.3628

204.1412, 0.3441,  
0.3401

 1.2825, 0.4966,  
0.3776

248.6517, 0.3421,

 0.1276, 0.7782,

0.3394

0.2218

299.2031, 0.3403,  
0.3388

0.0000, 0.0000,  
0.0000

42.4100, 0.3661,  
0.3468

42.4100, 0.3661,  
0.3468

36.5332, 0.3931,  
0.3537

49.0883, 0.3433,  
0.3399

31.4218, 0.4247,  
0.3603

56.5911, 0.3242,  
0.3334

27.0451, 0.4605,  
0.3657

64.9474, 0.3083,  
0.3272

23.3686, 0.4992,  
0.3690

74.1834, 0.2950,  
0.3216

20.3544, 0.5383,  
0.3690

84.3239, 0.2839,  
0.3165

■ 17.9608, 0.5739,  
0.3651

■ 92.0029, 0.2844,  
0.3289

■ 16.1398, 0.6017,  
0.3572

■ 15.6982, 0.6089,  
0.3547

# Harmonies

## Analogous

The Analogous color harmony consists of three colors that are next to each other on the color wheel.



42.4100, 0.3549, 0.3241



42.4100, 0.3661, 0.3468



42.4100, 0.3622, 0.3662

# Triad

The Triadic color harmony groups three colors that are evenly spaced from another and form a triangle on the color wheel.



42.4100, 0.3661, 0.3468



42.4100, 0.2925, 0.3567



42.4100, 0.2803, 0.2842

# Complementary

The Complementary color scheme is a pair of colors which are on the opposite of each other on the color wheel.



42.4100, 0.3661, 0.3468



49.2174, 0.2718, 0.3104

# Split Complementary

Split-complementary colors differ from the complementary color scheme. The scheme consists of three colors, the original color and two neighbors of the complement color.



42.4100, 0.2651, 0.2904



42.4100, 0.3661, 0.3468



42.4100, 0.2719, 0.3319

# Square

The Square scheme is like the rectangle color scheme, but the four colors are evenly spaced on the color wheel.



42.4100, 0.3661, 0.3468



42.4100, 0.3191, 0.3735



42.4100, 0.2621, 0.3075



42.4100, 0.3045, 0.2890



# Rectangle

The Rectangle color scheme consists of four colors that form a rectangle on the color wheel.



42.4100, 0.3661, 0.3468



42.4100, 0.3518, 0.3744



42.4100, 0.2621, 0.3075



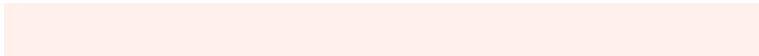
42.4100, 0.2740, 0.2850

# Sweetspot

The Sweet Spot groups the original color and five complimentary colors.



42.4120, 0.3661, 0.3468



89.3801, 0.3261, 0.3340



39.2500, 0.3286, 0.2779



18.7250, 0.3288, 0.3350



0.0000, 0.0000, 0.0000



21.4041, 0.3127, 0.3290



# Same Dimension

The Same Dimension uses a secret algorithm to generate beautiful new colors.



42.4120, 0.3661, 0.3468



62.7912, 0.3800, 0.3505



53.6331, 0.3573, 0.3804



12.2818, 0.3284, 0.3349



10.0204, 0.6065, 0.3566



0.6888, 0.5698, 0.3858

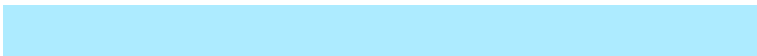


# Inverse Universe

The Inverse Universe completely reimagines the original color for something new.



49.2174, 0.2718, 0.3104



75.3327, 0.2641, 0.3062



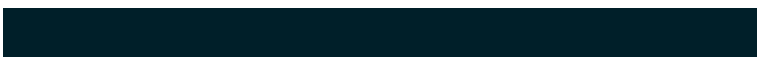
37.9968, 0.2680, 0.2717



12.8854, 0.2983, 0.3231



17.8130, 0.2018, 0.2465

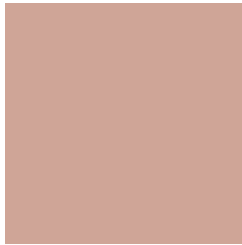


1.1177, 0.2065, 0.2634



# Previews

## White Background



This preview shows how the Yxy color 42.4100, 0.3661, 0.3468 looks on a white background.

## Color Contrast Check

Large Text (above 18pt) WCAG AA × Fail

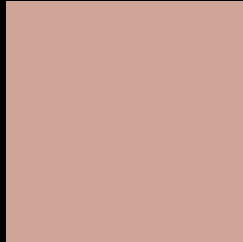
Any Text WCAG AA × Fail

Large Text (above 18pt) WCAG AAA × Fail

Any Text WCAG AAA × Fail



# Black Background



This preview shows how the Yxy color 42.4100, 0.3661, 0.3468 looks on a black background.

## Color Contrast Check

Large Text (above 18pt) WCAG AA ✓ Pass

Any Text WCAG AA ✓ Pass

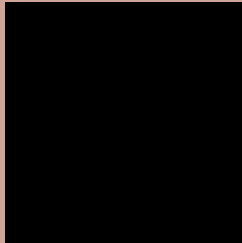
Large Text (above 18pt) WCAG AAA ✓ Pass

Any Text WCAG AAA ✓ Pass

If you want to check with other color combinations, try the [Color Contrast Checker](#).

**Yxy 42.4100, 0.3661, 0.3468**

## Background



This preview shows how black text looks on a background with the Yxy color 42.4100, 0.3661, 0.3468.



This preview shows how white text looks on a background with the Yxy color 42.4100, 0.3661, 0.3468.

# Color Blindness Simulation

Color vision deficiency is a very complex topic, and I could not describe the different causes any better than Wikipedia does, so if you want to learn more, you should check out their [article about color blindness](#).

## Dichromacy



### Original Color

42.4100, 0.3661, 0.3468

### Protanopia

42.6175, 0.3352, 0.3534

### Deuteranopia

42.4866, 0.3593, 0.3523



## Tritanopia

42.5983, 0.3478, 0.3143

# Trichromacy



## Original Color

42.4100, 0.3661, 0.3468

## Protanomaly

42.5353, 0.3462, 0.3516

## Deuteranomaly

42.5360, 0.3625, 0.3509

## Tritanomaly

42.5029, 0.3543, 0.3254

# Monochromacy



## Original Color

42.4100, 0.3661, 0.3468

## Achromatopsia

43.4154, 0.3127, 0.3290

## Achromatomaly

42.8599, 0.3307, 0.3357

# CSS Examples

## Text

The CSS property to change the color of the text to Yxy 42.4100, 0.3661, 0.3468 is called "color". The color property can be set on classes, ids or directly on the HTML element.

This example shows how text in the color `rgb(207, 165, 151)` looks like.

```
.text, #text, p{  
    color:rgb(207, 165, 151)  
}
```

If you want to add a text shadow in that color use the text-shadow property, you can generate a text shadow directly with our [CSS Text Shadow Generator](#).

Here you see how black text with a 4 pixel rgb(207, 165, 151) colored shadow looks like.

```
.shadow{ text-shadow: 4px 4px 2px rgb(207, 165, 151) }
```

## Border

The CSS property to change the border of an element to Yxy 42.4100, 0.3661, 0.3468 is called "border". The border property can be set on classes, ids or directly on the HTML element.

This example shows the color as border, it can be applied via the CSS property "border" or "border-color".

```
.border, #border, table{ border:4px solid rgb(207, 165, 151) }
```

If only the border color should be changed use the property `border-color`.

```
.border{ border-color:rgb(207, 165, 151) }
```

If you want to add a box shadow in that color use:

Here you see how a box with a 4 pixel `rgb(207, 165, 151)` colored shadow looks like.

```
.boxshadow{ -moz-box-shadow:4px 4px 4px  
4px rgb(207, 165, 151); -webkit-box-  
shadow:4px 4px 4px 4px rgb(207, 165, 151);  
box-shadow:4px 4px 4px 4px rgb(207, 165,  
151) }
```



# Background

The CSS property to change the background color of an element to Yxy 42.4100, 0.3661, 0.3468 is called "background". The background property can be set on classes, ids or directly on the HTML element.

```
.background, #background, body{  
background: rgb(207, 165, 151) }
```

If only the background color should be changed can be used:

```
.background{ background-color: rgb(207,  
165, 151) }
```

This example shows the color as background, it is applied via the CSS property "background".

To optimize and compress your CSS code, you can use our [online CSS compressor and optimizer](#) based on csstidy. If you want to create a linear or radial gradient as background or border, check our [CSS Gradient Generator](#).

Hey! You found this booklet interesting? Support Converting Colors with the new Membership Option!

The pro membership hides all ads, plus gives you double the colors in the color bucket, and more awesome pro features!

**[Learn more, Memberships starting at \\$2.50/m!](#)**

**Follow me  
on Twitter!**

@ConvertingColor