

Converting Colors

$Yxy(42.3389, 0.3481, 0.3396)$

Have a look what the booklet for
Yxy(42.3389, 0.3481, 0.3396)
contains.

Yxy(42.4136, 0.3471, 0.3395)	3
<i>Conversions</i>	4
<i>Details</i>	6
<i>Harmonies</i>	12
<i>Previews</i>	24
<i>Color Blindness Simulation</i>	27
<i>CSS Examples</i>	30

Color

Yxy(42.4136, 0.3471, 0.3395)

Conversions

Conversions Part 1

Format	Color
Hex	C5A8A0
RGB	197, 168, 160
RGB Percent	77%, 66%, 63%
CMY	0.2276, 0.3411, 0.3726
CMYK	0.00, 0.15, 0.19, 0.23
HSL	13°, 24%, 70%
HSV	13°, 19%, 77%
XYZ	43.3631, 42.4136, 39.1529
YIQ	175.7590, 19.8520, 3.6600

Conversions

Conversions Part 2

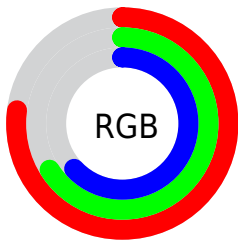
Format	Color
RYB	197, 170, 160
Decimal	12953760
CIELab	71.16, 9.25, 8.05
CIElCh	71, 12.256, 41.033
Yxy	42.4136, 0.3471, 0.3395
Android (android.graphics.Color)	4291143840 (0xFFC5A8A0)
YUV	175.7590, -7.7692, 18.6284
Hunter-Lab	65.1257, 4.8817, 9.9434

Details

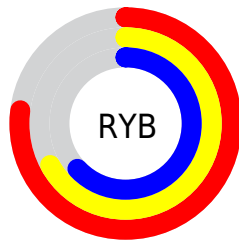
The Yxy color $42.4136, 0.3471, 0.3395$ is a light color, and the websafe version is hex `CC9999`. A complement of this color would be $47.8597, 0.2842, 0.3182$, and the grayscale version is $43.3157, 0.3127, 0.3290$.

A 20% lighter version of the original color is $78.7525, 0.3405, 0.3372$, and $19.4345, 0.3573, 0.3415$ is the 20% darker color. If you saturate the color by 10%, you get $36.4211, 0.3709, 0.3455$, and if you desaturate by 10%, it is $49.1937, 0.3273, 0.3337$.

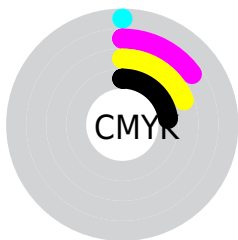
Distribution



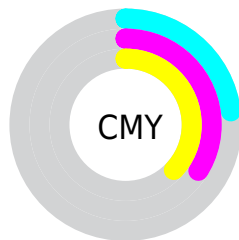
- Red (77%)
- Green (66%)
- Blue (63%)



- Red (77%)
- Yellow (67%)
- Blue (63%)



- Cyan (0%)
- Magenta (15%)
- Yellow (19%)
- Black (23%)





- Cyan (23%)
- Magenta (34%)
- Yellow (37%)

Brightness & Saturation Gradients

These gradients show how the Yxy color 42.4136, 0.3471, 0.3395 changes by changing the brightness by 10 percent. The first figure shows a shift by +10% for each color and the second figure -10%.


Similar to the brightness gradients but the following saturation gradients show a change of the Yxy color 42.4136, 0.3471, 0.3395 by changing the saturation by 10% instead.


 42.4136, 0.3471,
0.3395


 42.4136, 0.3471,
0.3395


356.1946, 0.3295,
0.3344

 29.4253, 0.3516,
0.3407


 78.8252, 0.3406,
0.3377

 19.4028, 0.3575,
0.3423


 103.0173, 0.3382,
0.3370

 11.9617, 0.3654,
0.3443


131.7128, 0.3362,
0.3364

 6.7176, 0.3768,
0.3469

165.2960, 0.3345,
0.3359

 3.2861, 0.3943,
0.3505

204.1514, 0.3330,
0.3354

 1.2829, 0.4259,
0.3567

248.6634, 0.3317,

 0.1279, 0.7308,

0.3351

0.2692

299.2163, 0.3305,
0.3347

0.0000, 0.0000,
0.0000

42.4136, 0.3471,
0.3395

42.4136, 0.3471,
0.3395

36.4211, 0.3709,
0.3455

49.1937, 0.3273,
0.3337

31.1820, 0.3992,
0.3515

56.7828, 0.3109,
0.3284

26.6676, 0.4323,
0.3570

65.2086, 0.2972,
0.3234

22.8457, 0.4698,
0.3614

74.4958, 0.2858,
0.3189

19.6812, 0.5101,
0.3637

84.4428, 0.2781,
0.3184

■ 17.1360, 0.5501,
0.3628

■ 90.6036, 0.2789,
0.3289

■ 15.1677, 0.5854,
0.3583

■ 13.7244, 0.6121,
0.3507

■ 13.5783, 0.6150,
0.3499

Harmonies

Analogous

The Analogous color harmony consists of three colors that are next to each other on the color wheel.



42.4136, 0.3388, 0.3243



42.4136, 0.3471, 0.3395



42.4136, 0.3458, 0.3525

Triad

The Triadic color harmony groups three colors that are evenly spaced from another and form a triangle on the color wheel.



42.4136, 0.3471, 0.3395



42.4136, 0.3015, 0.3485



42.4136, 0.2899, 0.2994

Complementary

The Complementary color scheme is a pair of colors which are on the opposite of each other on the color wheel.



42.4136, 0.3471, 0.3395



47.8597, 0.2842, 0.3182

Split Complementary

Split-complementary colors differ from the complementary color scheme. The scheme consists of three colors, the original color and two neighbors of the complement color.



42.4136, 0.2805, 0.3048



42.4136, 0.3471, 0.3395



42.4136, 0.2871, 0.3330

Square

The Square scheme is like the rectangle color scheme, but the four colors are evenly spaced on the color wheel.



42.4136, 0.3471, 0.3395



42.4136, 0.3192, 0.3583



42.4136, 0.2795, 0.3169



42.4136, 0.3055, 0.3016

Rectangle

The Rectangle color scheme consists of four colors that form a rectangle on the color wheel.



42.4136, 0.3471, 0.3395



42.4136, 0.3398, 0.3581



42.4136, 0.2795, 0.3169



42.4136, 0.2860, 0.3003

Sweetspot

The Sweet Spot groups the original color and five complimentary colors.



42.4155, 0.3471, 0.3395



91.6504, 0.3226, 0.3323



40.6728, 0.3219, 0.2925



19.4295, 0.3237, 0.3326



0.0000, 0.0000, 0.0000



21.4041, 0.3127, 0.3290

Same Dimension

The Same Dimension uses a secret algorithm to generate beautiful new colors.



42.4155, 0.3471, 0.3395



70.9121, 0.3575, 0.3422



49.7207, 0.3429, 0.3626



11.0046, 0.3284, 0.3341



9.0383, 0.6129, 0.3515



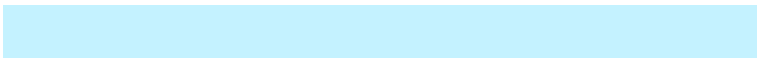
0.5382, 0.5719, 0.3841

Inverse Universe

The Inverse Universe completely reimagines the original color for something new.



47.8597, 0.2842, 0.3182



82.6552, 0.2775, 0.3153



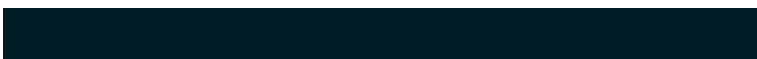
40.4239, 0.2828, 0.2929



11.6611, 0.2984, 0.3239



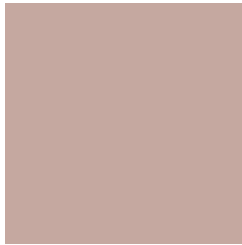
18.0165, 0.2050, 0.2581



0.9531, 0.2096, 0.2746

Previews

White Background



This preview shows how the Yxy color 42.4136, 0.3471, 0.3395 looks on a white background.

Color Contrast Check

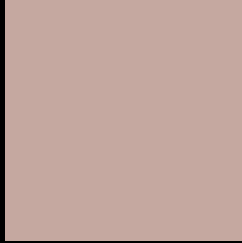
Large Text (above 18pt) WCAG AA × Fail

Any Text WCAG AA × Fail

Large Text (above 18pt) WCAG AAA × Fail

Any Text WCAG AAA × Fail

Black Background



This preview shows how the Yxy color 42.4136, 0.3471, 0.3395 looks on a black background.

Color Contrast Check

Large Text (above 18pt) WCAG AA ✓ Pass

Any Text WCAG AA ✓ Pass

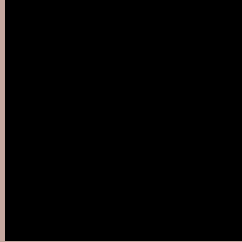
Large Text (above 18pt) WCAG AAA ✓ Pass

Any Text WCAG AAA ✓ Pass

If you want to check with other color combinations, try the [Color Contrast Checker](#).

Yxy 42.4136, 0.3471, 0.3395

Background



This preview shows how black text looks on a background with the Yxy color 42.4136, 0.3471, 0.3395.



This preview shows how white text looks on a background with the Yxy color 42.4136, 0.3471, 0.3395.

Color Blindness Simulation

Color vision deficiency is a very complex topic, and I could not describe the different causes any better than Wikipedia does, so if you want to learn more, you should check out their [article about color blindness](#).

Dichromacy



Original Color

42.4136, 0.3471, 0.3395

Protanopia

42.6197, 0.3274, 0.3439

Deuteranopia

42.2791, 0.3462, 0.3395



Tritanopia

42.2667, 0.3331, 0.3126

Trichromacy



Original Color

42.4136, 0.3471, 0.3395

Protanomaly

42.5528, 0.3341, 0.3424

Deuteranomaly

42.2791, 0.3462, 0.3395

Tritanomaly

42.2185, 0.3384, 0.3227

Monochromacy



Original Color

42.4136, 0.3471, 0.3395

Achromatopsia

43.4154, 0.3127, 0.3290

Achromatomaly

42.9798, 0.3252, 0.3330

CSS Examples

Text

The CSS property to change the color of the text to Yxy 42.4136, 0.3471, 0.3395 is called "color". The color property can be set on classes, ids or directly on the HTML element.

This example shows how text in the color `rgb(197, 168, 160)` looks like.

```
.text, #text, p{  
    color:rgb(197, 168, 160)  
}
```

If you want to add a text shadow in that color use the text-shadow property, you can generate a text shadow directly with our [CSS Text Shadow Generator](#).

Here you see how black text with a 4 pixel rgb(197, 168, 160) colored shadow looks like.

```
.shadow{ text-shadow: 4px 4px 2px rgb(197, 168, 160) }
```

Border

The CSS property to change the border of an element to Yxy 42.4136, 0.3471, 0.3395 is called "border". The border property can be set on classes, ids or directly on the HTML element.

This example shows the color as border, it can be applied via the CSS property "border" or "border-color".

```
.border, #border, table{ border:4px solid rgb(197, 168, 160) }
```

If only the border color should be changed use the property `border-color`.

```
.border{ border-color:rgb(197, 168, 160) }
```

If you want to add a box shadow in that color use:

Here you see how a box with a 4 pixel `rgb(197, 168, 160)` colored shadow looks like.

```
.boxshadow{ -moz-box-shadow:4px 4px 4px  
4px rgb(197, 168, 160); -webkit-box-  
shadow:4px 4px 4px 4px rgb(197, 168, 160);  
box-shadow:4px 4px 4px 4px rgb(197, 168,  
160) }
```


Background

The CSS property to change the background color of an element to Yxy 42.4136, 0.3471, 0.3395 is called "background". The background property can be set on classes, ids or directly on the HTML element.

```
.background, #background, body{  
background: rgb(197, 168, 160) }
```

If only the background color should be changed can be used:

```
.background{ background-color: rgb(197,  
168, 160) }
```

This example shows the color as background, it is applied via the CSS property "background".

To optimize and compress your CSS code, you can use our [online CSS compressor and optimizer](#) based on csstidy. If you want to create a linear or radial gradient as background or border, check our [CSS Gradient Generator](#).

Hey! You found this booklet interesting? Support Converting Colors with the new Membership Option!

The pro membership hides all ads, plus gives you double the colors in the color bucket, and more awesome pro features!

[Learn more, Memberships starting at \\$2.50/m!](#)

**Follow me
on Twitter!**

@ConvertingColor