

Converting Colors

$Y_{xy}(42.4377, 0.3424, 0.3316)$

Have a look what the booklet for
Yxy(42.4377, 0.3424, 0.3316)
contains.

Yxy(42.2609, 0.3418, 0.3304)	3
<i>Conversions</i>	4
<i>Details</i>	6
<i>Harmonies</i>	12
<i>Previews</i>	24
<i>Color Blindness Simulation</i>	27
<i>CSS Examples</i>	30

Color

Yxy(42.2609, 0.3418, 0.3304)

Conversions

Conversions Part 1

Format	Color
Hex	C5A7A6
RGB	197, 167, 166
RGB Percent	77%, 65%, 65%
CMY	0.2276, 0.3450, 0.3490
CMYK	0.00, 0.15, 0.16, 0.23
HSL	2°, 21%, 71%
HSV	2°, 16%, 77%
XYZ	43.7191, 42.2609, 41.9283
YIQ	175.8560, 18.2010, 6.0490

Conversions

Conversions Part 2

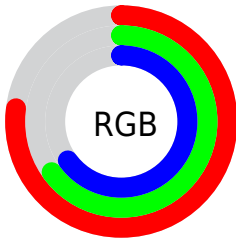
Format	Color
R_{YB}	197, 167, 166
Decimal	12953510
CIE _{Lab}	71.05, 10.75, 4.58
CIE _{LCh}	71, 11.683, 23.088
Yxy	42.2609, 0.3418, 0.3304
Android (android.graphics.Color)	4291143590 (0xFFC5A7A6)
YUV	175.8560, -4.8590, 18.5433
Hunter-Lab	65.0084, 6.2791, 7.2657

Details

The Yxy color **42.2609, 0.3418, 0.3304** is a light color, and the websafe version is hex **CC9999**. A complement of this color would be **51.5871, 0.2891, 0.3276**, and the grayscale version is **43.3548, 0.3127, 0.3290**.

A 20% lighter version of the original color is **78.5338, 0.3364, 0.3301**, and **19.3160, 0.3511, 0.3309** is the 20% darker color. If you saturate the color by 10%, you get **35.1214, 0.3662, 0.3314**, and if you desaturate by 10%, it is **50.5427, 0.3222, 0.3295**.

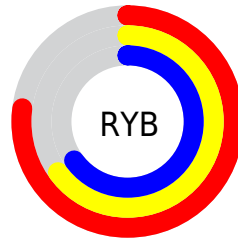
Distribution



Red (77%)

Green (65%)

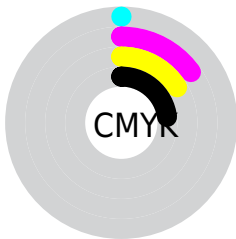
Blue (65%)



Red (77%)

Yellow (65%)

Blue (65%)

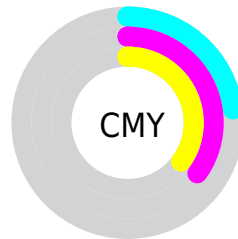


Cyan (0%)

Magenta (15%)

Yellow (16%)

Black (23%)



Cyan (23%)

Magenta (35%)


Yellow (35%)

Brightness & Saturation Gradients


These gradients show how the Yxy color 42.2609, 0.3418, 0.3304 changes by changing the brightness by 10 percent. The first figure shows a shift by +10% for each color and the second figure -10%.

Similar to the brightness gradients but the following saturation gradients show a change of the Yxy color 42.2609, 0.3418, 0.3304 by changing the saturation by 10% instead.


 42.2609, 0.3418,
0.3304


 42.2609, 0.3418,
0.3304


355.5633, 0.3269,
0.3298

 29.3056, 0.3456,
0.3305


 78.5943, 0.3363,
0.3302

 19.3122, 0.3506,
0.3306


 102.7413, 0.3343,
0.3302

 11.8960, 0.3573,
0.3307


131.3876, 0.3326,
0.3301

 6.6729, 0.3669,
0.3307

164.9177, 0.3311,
0.3300

 3.2584, 0.3818,
0.3304

203.7159, 0.3299,
0.3300

 1.2681, 0.4078,
0.3293

248.1666, 0.3288,

 0.1163, 0.7623,

0.3299

0.2377

298.6543, 0.3278,
0.3299

0.0000, 0.0000,
0.0000

42.2609, 0.3418,
0.3304

42.2609, 0.3418,
0.3304

35.1214, 0.3662,
0.3314

50.5427, 0.3222,
0.3295

29.0686, 0.3963,
0.3324

60.0077, 0.3064,
0.3287

24.0510, 0.4327,
0.3333

70.7019, 0.2936,
0.3279

20.0107, 0.4753,
0.3340

82.6671, 0.2833,
0.3272

16.8840, 0.5218,
0.3344

90.6046, 0.2789,
0.3289

■ 14.5997, 0.5677,
0.3341

■ 13.0760, 0.6062,
0.3332

■ 12.2150, 0.6309,
0.3318

■ 12.0057, 0.6379,
0.3317

Harmonies

Analogous

The Analogous color harmony consists of three colors that are next to each other on the color wheel.



42.2609, 0.3294, 0.3163



42.2609, 0.3418, 0.3304



42.2609, 0.3462, 0.3445

Triad

The Triadic color harmony groups three colors that are evenly spaced from another and form a triangle on the color wheel.



42.2609, 0.3418, 0.3304



42.2609, 0.3120, 0.3541



42.2609, 0.2847, 0.3029

Complementary

The Complementary color scheme is a pair of colors which are on the opposite of each other on the color wheel.



42.2609, 0.3418, 0.3304



51.5871, 0.2891, 0.3276

Split Complementary

Split-complementary colors differ from the complementary color scheme. The scheme consists of three colors, the original color and two neighbors of the complement color.



42.2609, 0.2804, 0.3122



42.2609, 0.3418, 0.3304



42.2609, 0.2959, 0.3421

Square

The Square scheme is like the rectangle color scheme, but the four colors are evenly spaced on the color wheel.



42.2609, 0.3418, 0.3304



42.2609, 0.3287, 0.3588



42.2609, 0.2844, 0.3265



42.2609, 0.2964, 0.3007

Rectangle

The Rectangle color scheme consists of four colors that form a rectangle on the color wheel.



42.2609, 0.3418, 0.3304



42.2609, 0.3439, 0.3521



42.2609, 0.2844, 0.3265



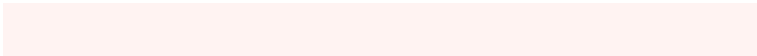
42.2609, 0.2824, 0.3053

Sweetspot

The Sweet Spot groups the original color and five complimentary colors.



42.2628, 0.3418, 0.3304



91.5901, 0.3210, 0.3294



43.1424, 0.3150, 0.2912



19.3605, 0.3223, 0.3295



0.0000, 0.0000, 0.0000



21.4041, 0.3127, 0.3290

Same Dimension

The Same Dimension uses a secret algorithm to generate beautiful new colors.



42.2628, 0.3418, 0.3304



70.9274, 0.3499, 0.3307



48.0713, 0.3389, 0.3494



10.6921, 0.3289, 0.3298



7.9246, 0.6373, 0.3322



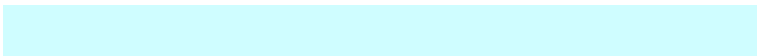
0.3953, 0.6276, 0.3399

Inverse Universe

The Inverse Universe completely reimagines the original color for something new.



51.5871, 0.2891, 0.3276



90.9247, 0.2840, 0.3273



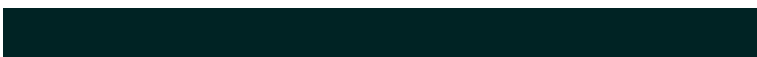
45.1686, 0.2883, 0.3078



12.0052, 0.2984, 0.3282



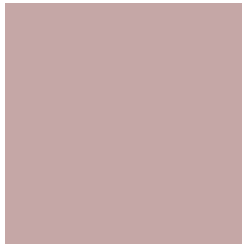
27.0419, 0.2219, 0.3187



1.2997, 0.2225, 0.3210

Previews

White Background



This preview shows how the Yxy color 42.2609, 0.3418, 0.3304 looks on a white background.

Color Contrast Check

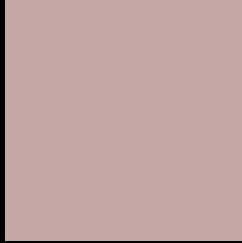
Large Text (above 18pt) WCAG AA × Fail

Any Text WCAG AA × Fail

Large Text (above 18pt) WCAG AAA × Fail

Any Text WCAG AAA × Fail

Black Background



This preview shows how the Yxy color 42.2609, 0.3418, 0.3304 looks on a black background.

Color Contrast Check

Large Text (above 18pt) WCAG AA ✓ Pass

Any Text WCAG AA ✓ Pass

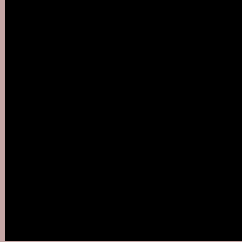
Large Text (above 18pt) WCAG AAA ✓ Pass

Any Text WCAG AAA ✓ Pass

If you want to check with other color combinations, try the [Color Contrast Checker](#).

Yxy 42.2609, 0.3418, 0.3304

Background



This preview shows how black text looks on a background with the Yxy color 42.2609, 0.3418, 0.3304.



This preview shows how white text looks on a background with the Yxy color 42.2609, 0.3418, 0.3304.

Color Blindness Simulation

Color vision deficiency is a very complex topic, and I could not describe the different causes any better than Wikipedia does, so if you want to learn more, you should check out their [article about color blindness](#).

Dichromacy



Original Color

42.2609, 0.3418, 0.3304

Protanopia

42.2167, 0.3206, 0.3344

Deuteranopia

42.2278, 0.3388, 0.3317



Tritanopia

42.1304, 0.3322, 0.3125

Trichromacy



Original Color

42.2609, 0.3418, 0.3304

Protanomaly

42.2673, 0.3281, 0.3330

Deuteranomaly

42.3605, 0.3397, 0.3317

Tritanomaly

42.3342, 0.3357, 0.3189

Monochromacy



Original Color

42.2609, 0.3418, 0.3304

Achromatopsia

43.4154, 0.3127, 0.3290

Achromatomaly

43.0560, 0.3235, 0.3304

CSS Examples

Text

The CSS property to change the color of the text to Yxy 42.2609, 0.3418, 0.3304 is called "color". The color property can be set on classes, ids or directly on the HTML element.

This example shows how text in the color `rgb(197, 167, 166)` looks like.

```
.text, #text, p{  
    color:rgb(197, 167, 166)  
}
```

If you want to add a text shadow in that color use the text-shadow property, you can generate a text shadow directly with our [CSS Text Shadow Generator](#).

Here you see how black text with a 4 pixel rgb(197, 167, 166) colored shadow looks like.

```
.shadow{ text-shadow: 4px 4px 2px rgb(197, 167, 166) }
```

Border

The CSS property to change the border of an element to Yxy 42.2609, 0.3418, 0.3304 is called "border". The border property can be set on classes, ids or directly on the HTML element.

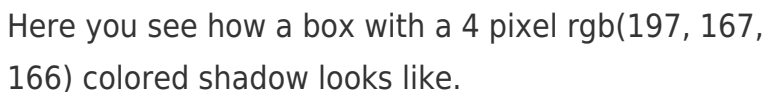
This example shows the color as border, it can be applied via the CSS property "border" or "border-color".

```
.border, #border, table{ border:4px solid rgb(197, 167, 166) }
```

If only the border color should be changed use the property `border-color`.

```
.border{ border-color:rgb(197, 167, 166) }
```

If you want to add a box shadow in that color use:



Here you see how a box with a 4 pixel `rgb(197, 167, 166)` colored shadow looks like.

```
.boxshadow{ -moz-box-shadow:4px 4px 4px 4px rgb(197, 167, 166); -webkit-box-shadow:4px 4px 4px 4px rgb(197, 167, 166); box-shadow:4px 4px 4px 4px rgb(197, 167, 166) }
```


Background

The CSS property to change the background color of an element to Yxy 42.2609, 0.3418, 0.3304 is called "background". The background property can be set on classes, ids or directly on the HTML element.

```
.background, #background, body{  
background: rgb(197, 167, 166) }
```

If only the background color should be changed can be used:

```
.background{ background-color: rgb(197,  
167, 166) }
```

This example shows the color as background, it is applied via the CSS property "background".

To optimize and compress your CSS code, you can use our [online CSS compressor and optimizer](#) based on csstidy. If you want to create a linear or radial gradient as background or border, check our [CSS Gradient Generator](#).

Hey! You found this booklet interesting? Support Converting Colors with the new Membership Option!

The pro membership hides all ads, plus gives you double the colors in the color bucket, and more awesome pro features!

[Learn more, Memberships starting at \\$2.50/m!](#)

**Follow me
on Twitter!**

@ConvertingColor