

Converting Colors

$Yxy(42.4664, 0.3594, 0.3392)$

Have a look what the booklet for
Yxy(42.4664, 0.3594, 0.3392)
contains.

Yxy(42.4664, 0.3594, 0.3392)	3
Conversions	4
Details	6
Harmonies	12
Previews	24
Color Blindness Simulation	27
CSS Examples	30

Color

Yxy(42.4664, 0.3594, 0.3392)

Conversions

Conversions Part 1

Format	Color
Hex	CEA59D
RGB	206, 165, 157
RGB Percent	81%, 65%, 62%
CMY	0.1922, 0.3529, 0.3842
CMYK	0.00, 0.20, 0.24, 0.19
HSL	10°, 33%, 71%
HSV	10°, 24%, 81%
XYZ	44.9954, 42.4664, 37.7340
YIQ	176.3470, 27.0040, 6.2040

Conversions

Conversions Part 2

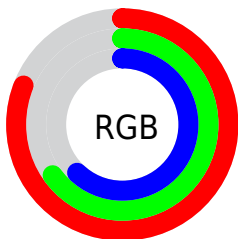
Format	Color
RYB	206, 167, 157
Decimal	13542813
CIELab	71.19, 13.86, 9.85
CIELCh	71, 17.002, 35.395
Yxy	42.4664, 0.3594, 0.3392
Android (android.graphics.Color)	4291732893 (0xFFCEA59D)
YUV	176.3470, -9.5381, 26.0057
Hunter-Lab	65.1662, 9.2080, 11.2850

Details

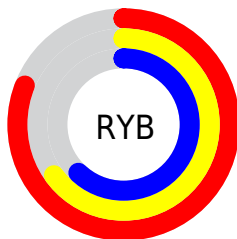
The Yxy color **42.4664, 0.3594, 0.3392** is a light color, and the websafe version is hex **CC9999**. A complement of this color would be **52.0224, 0.2771, 0.3185**, and the grayscale version is **43.6484, 0.3127, 0.3290**.

A 20% lighter version of the original color is **77.1999, 0.3438, 0.3372**, and **19.4302, 0.3734, 0.3411** is the 20% darker color. If you saturate the color by 10%, you get **36.0161, 0.3864, 0.3438**, and if you desaturate by 10%, it is **49.8779, 0.3371, 0.3347**.

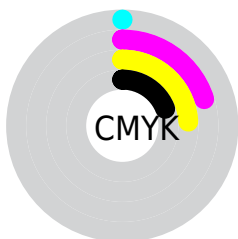
Distribution



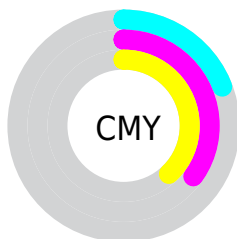
- Red (81%)
- Green (65%)
- Blue (62%)



- Red (81%)
- Yellow (65%)
- Blue (62%)



- Cyan (0%)
- Magenta (20%)
- Yellow (24%)
- Black (19%)





- Cyan (19%)
- Magenta (35%)
- Yellow (38%)

Brightness & Saturation Gradients

These gradients show how the Yxy color 42.4664, 0.3594, 0.3392 changes by changing the brightness by 10 percent. The first figure shows a shift by +10% for each color and the second figure -10%.


Similar to the brightness gradients but the following saturation gradients show a change of the Yxy color 42.4664, 0.3594, 0.3392 by changing the saturation by 10% instead.


 42.4664, 0.3594,
0.3392


 42.4664, 0.3594,
0.3392


356.4127, 0.3355,
0.3344

 29.4667, 0.3655,
0.3403


 78.9050, 0.3506,
0.3376

 19.4341, 0.3735,
0.3416

 103.1127, 0.3473,
0.3369

 11.9844, 0.3843,
0.3432


131.8251, 0.3446,
0.3364

 6.7330, 0.3997,
0.3451

165.4267, 0.3422,
0.3359

 3.2957, 0.4234,
0.3473

204.3019, 0.3402,
0.3355

 1.2880, 0.4677,
0.3519

248.8350, 0.3384,

 0.1319, 0.7786,

0.3351

0.2214

299.4105, 0.3369,
0.3347

0.0000, 0.0000,
0.0000

42.4664, 0.3594,
0.3392

42.4664, 0.3594,
0.3392

36.0161, 0.3864,
0.3438

49.8779, 0.3371,
0.3347

30.4818, 0.4186,
0.3482

58.2818, 0.3188,
0.3305

25.8235, 0.4560,
0.3519

67.7149, 0.3037,
0.3266

21.9959, 0.4975,
0.3542

78.2105, 0.2913,
0.3231

18.9496, 0.5404,
0.3543

89.4728, 0.2836,
0.3250

■ 16.6297, 0.5800,
0.3516

■ 91.8613, 0.2838,
0.3289

■ 14.9740, 0.6108,
0.3460

■ 14.2408, 0.6248,
0.3421

Harmonies

Analogous

The Analogous color harmony consists of three colors that are next to each other on the color wheel.



42.4664, 0.3456, 0.3185



42.4664, 0.3594, 0.3392



42.4664, 0.3601, 0.3582

Triad

The Triadic color harmony groups three colors that are evenly spaced from another and form a triangle on the color wheel.



42.4664, 0.3594, 0.3392



42.4664, 0.3014, 0.3597



42.4664, 0.2780, 0.2888

Complementary

The Complementary color scheme is a pair of colors which are on the opposite of each other on the color wheel.



42.4664, 0.3594, 0.3392



52.0224, 0.2771, 0.3185

Split Complementary

Split-complementary colors differ from the complementary color scheme. The scheme consists of three colors, the original color and two neighbors of the complement color.



42.4664, 0.2673, 0.2978



42.4664, 0.3594, 0.3392



42.4664, 0.2804, 0.3388

Square

The Square scheme is like the rectangle color scheme, but the four colors are evenly spaced on the color wheel.



42.4664, 0.3594, 0.3392



42.4664, 0.3260, 0.3714



42.4664, 0.2682, 0.3158



42.4664, 0.2981, 0.2902

Rectangle

The Rectangle color scheme consists of four colors that form a rectangle on the color wheel.



42.4664, 0.3594, 0.3392



42.4664, 0.3531, 0.3675



42.4664, 0.2682, 0.3158



42.4664, 0.2733, 0.2907

Sweetspot

The Sweet Spot groups the original color and five complimentary colors.



42.4684, 0.3594, 0.3392



89.7379, 0.3244, 0.3319



41.3509, 0.3219, 0.2786



19.0266, 0.3255, 0.3321



0.0000, 0.0000, 0.0000



21.4041, 0.3127, 0.3290

Same Dimension

The Same Dimension uses a secret algorithm to generate beautiful new colors.



42.4684, 0.3594, 0.3392



62.7824, 0.3739, 0.3418



51.8899, 0.3528, 0.3683



11.5041, 0.3286, 0.3328



8.8643, 0.6228, 0.3437



0.5521, 0.5886, 0.3709

Inverse Universe

The Inverse Universe completely reimagines the original color for something new.



52.0224, 0.2771, 0.3185



81.1210, 0.2692, 0.3158



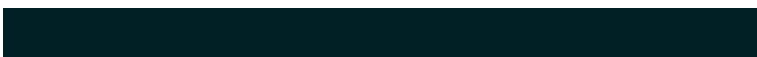
41.9624, 0.2744, 0.2863



12.4036, 0.2983, 0.3251



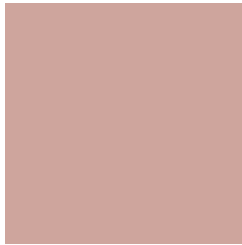
21.1344, 0.2102, 0.2767



1.1755, 0.2133, 0.2880

Previews

White Background



This preview shows how the Yxy color 42.4664, 0.3594, 0.3392 looks on a white background.

Color Contrast Check

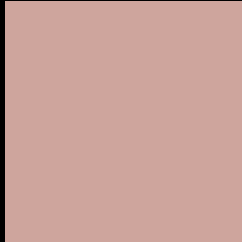
Large Text (above 18pt) WCAG AA × Fail

Any Text WCAG AA × Fail

Large Text (above 18pt) WCAG AAA × Fail

Any Text WCAG AAA × Fail

Black Background



This preview shows how the Yxy color 42.4664, 0.3594, 0.3392 looks on a black background.

Color Contrast Check

Large Text (above 18pt) WCAG AA ✓ Pass

Any Text WCAG AA ✓ Pass

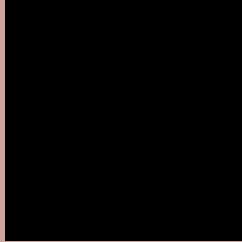
Large Text (above 18pt) WCAG AAA ✓ Pass

Any Text WCAG AAA ✓ Pass

If you want to check with other color combinations, try the [Color Contrast Checker](#).

Yxy 42.4664, 0.3594, 0.3392

Background



This preview shows how black text looks on a background with the Yxy color 42.4664, 0.3594, 0.3392.



This preview shows how white text looks on a background with the Yxy color 42.4664, 0.3594, 0.3392.

Color Blindness Simulation

Color vision deficiency is a very complex topic, and I could not describe the different causes any better than Wikipedia does, so if you want to learn more, you should check out their [article about color blindness](#).

Dichromacy



Original Color

42.4664, 0.3594, 0.3392

Protanopia

42.7045, 0.3291, 0.3452

Deuteranopia

42.4113, 0.3518, 0.3446



Tritanopia

42.3457, 0.3450, 0.3130

Trichromacy



Original Color

42.4664, 0.3594, 0.3392

Protanomaly

42.6110, 0.3398, 0.3436

Deuteranomaly

42.4552, 0.3550, 0.3432

Tritanomaly

42.2869, 0.3504, 0.3229

Monochromacy



Original Color

42.4664, 0.3594, 0.3392

Achromatopsia

43.4154, 0.3127, 0.3290

Achromatomaly

42.9344, 0.3289, 0.3330

CSS Examples

Text

The CSS property to change the color of the text to Yxy 42.4664, 0.3594, 0.3392 is called "color". The color property can be set on classes, ids or directly on the HTML element.

This example shows how text in the color `rgb(206, 165, 157)` looks like.

```
.text, #text, p{  
    color:rgb(206, 165, 157)  
}
```

If you want to add a text shadow in that color use the text-shadow property, you can generate a text shadow directly with our [CSS Text Shadow Generator](#).

Here you see how black text with a 4 pixel rgb(206, 165, 157) colored shadow looks like.

```
.shadow{ text-shadow: 4px 4px 2px rgb(206, 165, 157) }
```

Border

The CSS property to change the border of an element to Yxy 42.4664, 0.3594, 0.3392 is called "border". The border property can be set on classes, ids or directly on the HTML element.

This example shows the color as border, it can be applied via the CSS property "border" or "border-color".

```
.border, #border, table{ border:4px solid rgb(206, 165, 157) }
```

If only the border color should be changed use the property `border-color`.

```
.border{ border-color:rgb(206, 165, 157) }
```

If you want to add a box shadow in that color use:

Here you see how a box with a 4 pixel `rgb(206, 165, 157)` colored shadow looks like.

```
.boxshadow{ -moz-box-shadow:4px 4px 4px  
4px rgb(206, 165, 157); -webkit-box-  
shadow:4px 4px 4px 4px rgb(206, 165, 157);  
box-shadow:4px 4px 4px 4px rgb(206, 165,  
157) }
```


Background

The CSS property to change the background color of an element to Yxy 42.4664, 0.3594, 0.3392 is called "background". The background property can be set on classes, ids or directly on the HTML element.

```
.background, #background, body{  
background: rgb(206, 165, 157) }
```

If only the background color should be changed can be used:

```
.background{ background-color: rgb(206,  
165, 157) }
```

This example shows the color as background, it is applied via the CSS property "background".

To optimize and compress your CSS code, you can use our [online CSS compressor and optimizer](#) based on csstidy. If you want to create a linear or radial gradient as background or border, check our [CSS Gradient Generator](#).

Hey! You found this booklet interesting? Support Converting Colors with the new Membership Option!

The pro membership hides all ads, plus gives you double the colors in the color bucket, and more awesome pro features!

[Learn more, Memberships starting at \\$2.50/m!](#)

**Follow me
on Twitter!**

@ConvertingColor