

Converting Colors

$Y_{xy}(42.5592, 0.3469, 0.3294)$

Have a look what the booklet for
Yxy(42.5592, 0.3469, 0.3294)
contains.

Yxy(42.5822, 0.3468, 0.3291)	3
<i>Conversions</i>	4
<i>Details</i>	6
<i>Harmonies</i>	12
<i>Previews</i>	24
<i>Color Blindness Simulation</i>	27
<i>CSS Examples</i>	30

Color

Yxy(42.5822, 0.3468, 0.3291)

Conversions

Conversions Part 1

Format	Color
Hex	CAA6A6
RGB	202, 166, 166
RGB Percent	79%, 65%, 65%
CMY	0.2079, 0.3490, 0.3490
CMYK	0.00, 0.18, 0.18, 0.21
HSL	0°, 25%, 72%
HSV	0°, 18%, 79%
XYZ	44.8724, 42.5822, 41.9353
YIQ	176.7640, 21.4560, 7.6320

Conversions

Conversions Part 2

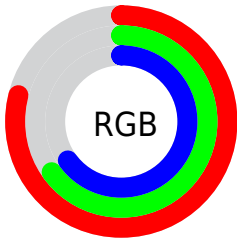
Format	Color
R _Y B	202, 166, 166
Decimal	13280934
CIE Lab	71.27, 13.16, 4.95
CIE LCh	71, 14.064, 20.620
Yxy	42.5822, 0.3468, 0.3291
Android (android.graphics.Color)	4291471014 (0xFFCAA6A6)
YUV	176.7640, -5.3067, 22.1320
Hunter-Lab	65.2550, 8.5486, 7.5766

Details

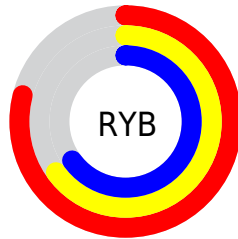
The Yxy color $42.5822, 0.3468, 0.3291$ is a light color, and the websafe version is hex `CC9999`. A complement of this color would be $54.6011, 0.2861, 0.3289$, and the grayscale version is $43.8565, 0.3127, 0.3290$.

A 20% lighter version of the original color is $78.1934, 0.3373, 0.3291$, and $19.4526, 0.3568, 0.3291$ is the 20% darker color. If you saturate the color by 10%, you get $35.1241, 0.3728, 0.3292$, and if you desaturate by 10%, it is $51.3137, 0.3260, 0.3290$.

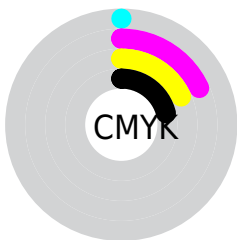
Distribution



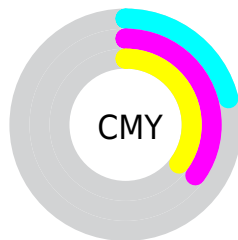
- Red (79%)
- Green (65%)
- Blue (65%)



- Red (79%)
- Yellow (65%)
- Blue (65%)



- Cyan (0%)
- Magenta (18%)
- Yellow (18%)
- Black (21%)




- Cyan (21%)
- Magenta (35%)
- Yellow (35%)

Brightness & Saturation Gradients

These gradients show how the Yxy color 42.5822, 0.3468, 0.3291 changes by changing the brightness by 10 percent. The first figure shows a shift by +10% for each color and the second figure -10%.


Similar to the brightness gradients but the following saturation gradients show a change of the Yxy color 42.5822, 0.3468, 0.3291 by changing the saturation by 10% instead.


 42.5822, 0.3468,
0.3291


 42.5822, 0.3468,
0.3291


356.8907, 0.3294,
0.3293

 29.5574, 0.3513,
0.3290


 79.0800, 0.3404,
0.3292

 19.5029, 0.3571,
0.3288


 103.3218, 0.3380,
0.3292

 12.0342, 0.3649,
0.3285


132.0715, 0.3360,
0.3292

 6.7670, 0.3761,
0.3280

165.7133, 0.3343,
0.3292

 3.3168, 0.3934,
0.3268

204.6318, 0.3328,
0.3293

 1.2993, 0.4234,
0.3240

249.2113, 0.3315,

 0.1406, 0.7639,

0.3293

0.2361

299.8361, 0.3304,
0.3293

0.0000, 0.0000,
0.0000

42.5822, 0.3468,
0.3291

42.5822, 0.3468,
0.3291

35.1241, 0.3728,
0.3292

51.3137, 0.3260,
0.3290

28.8744, 0.4049,
0.3293

61.3679, 0.3094,
0.3290

23.7714, 0.4437,
0.3294

72.7989, 0.2961,
0.3290

19.7455, 0.4884,
0.3295

85.6557, 0.2853,
0.3289

16.7193, 0.5363,
0.3297

91.2934, 0.2816,
0.3289

■ 14.6056, 0.5815,
0.3298

■ 13.3018, 0.6166,
0.3299

■ 12.6595, 0.6366,
0.3300

■ 12.5537, 0.6401,
0.3300

Harmonies

Analogous

The Analogous color harmony consists of three colors that are next to each other on the color wheel.



42.5822, 0.3312, 0.3126



42.5822, 0.3468, 0.3291



42.5822, 0.3529, 0.3461

Triad

The Triadic color harmony groups three colors that are evenly spaced from another and form a triangle on the color wheel.



42.5822, 0.3468, 0.3291



42.5822, 0.3135, 0.3601



42.5822, 0.2784, 0.2983

Complementary

The Complementary color scheme is a pair of colors which are on the opposite of each other on the color wheel.



42.5822, 0.3468, 0.3291



54.6011, 0.2861, 0.3289

Split Complementary

Split-complementary colors differ from the complementary color scheme. The scheme consists of three colors, the original color and two neighbors of the complement color.



42.5822, 0.2741, 0.3099



42.5822, 0.3468, 0.3291



42.5822, 0.2939, 0.3461

Square

The Square scheme is like the rectangle color scheme, but the four colors are evenly spaced on the color wheel.



42.5822, 0.3468, 0.3291



42.5822, 0.3333, 0.3649



42.5822, 0.2797, 0.3274



42.5822, 0.2917, 0.2951

Rectangle

The Rectangle color scheme consists of four colors that form a rectangle on the color wheel.



42.5822, 0.3468, 0.3291



42.5822, 0.3508, 0.3557



42.5822, 0.2797, 0.3274



42.5822, 0.2759, 0.3013

Sweetspot

The Sweet Spot groups the original color and five complimentary colors.



42.5841, 0.3468, 0.3291



91.3394, 0.3211, 0.3290



44.0931, 0.3148, 0.2853



19.2999, 0.3223, 0.3290



0.0000, 0.0000, 0.0000



21.4041, 0.3127, 0.3290

Same Dimension

The Same Dimension uses a secret algorithm to generate beautiful new colors.



42.5841, 0.3468, 0.3291



67.4830, 0.3552, 0.3291



49.5856, 0.3429, 0.3515



11.2138, 0.3290, 0.3291



8.0802, 0.6401, 0.3300



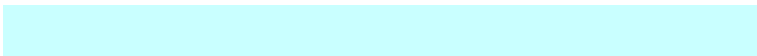
0.4169, 0.6401, 0.3300

Inverse Universe

The Inverse Universe completely reimagines the original color for something new.



54.6011, 0.2861, 0.3289



91.2182, 0.2813, 0.3289



46.6500, 0.2849, 0.3054



12.7270, 0.2984, 0.3290



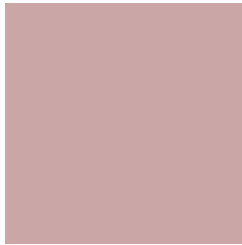
29.9225, 0.2247, 0.3287



1.5437, 0.2247, 0.3287

Previews

White Background



This preview shows how the Yxy color 42.5822, 0.3468, 0.3291 looks on a white background.

Color Contrast Check

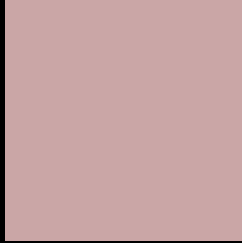
Large Text (above 18pt) WCAG AA × Fail

Any Text WCAG AA × Fail

Large Text (above 18pt) WCAG AAA × Fail

Any Text WCAG AAA × Fail

Black Background



This preview shows how the Yxy color 42.5822, 0.3468, 0.3291 looks on a black background.

Color Contrast Check

Large Text (above 18pt) WCAG AA ✓ Pass

Any Text WCAG AA ✓ Pass

Large Text (above 18pt) WCAG AAA ✓ Pass

Any Text WCAG AAA ✓ Pass

If you want to check with other color combinations, try the [Color Contrast Checker](#).

Yxy 42.5822, 0.3468, 0.3291

Background



This preview shows how black text looks on a background with the Yxy color 42.5822, 0.3468, 0.3291.



This preview shows how white text looks on a background with the Yxy color 42.5822, 0.3468, 0.3291.

Color Blindness Simulation

Color vision deficiency is a very complex topic, and I could not describe the different causes any better than Wikipedia does, so if you want to learn more, you should check out their [article about color blindness](#).

Dichromacy



Original Color

42.5822, 0.3468, 0.3291

Protanopia

42.7581, 0.3205, 0.3344

Deuteranopia

42.6946, 0.3405, 0.3343



Tritanopia

42.4218, 0.3380, 0.3128

Trichromacy



Original Color

42.5822, 0.3468, 0.3291

Protanomaly

42.5552, 0.3291, 0.3317

Deuteranomaly

42.7276, 0.3435, 0.3329

Tritanomaly

42.6239, 0.3415, 0.3190

Monochromacy



Original Color

42.5822, 0.3468, 0.3291

Achromatopsia

43.9657, 0.3127, 0.3290

Achromatomaly

43.3434, 0.3244, 0.3290

CSS Examples

Text

The CSS property to change the color of the text to Yxy 42.5822, 0.3468, 0.3291 is called "color". The color property can be set on classes, ids or directly on the HTML element.

This example shows how text in the color `rgb(202, 166, 166)` looks like.

```
.text, #text, p{  
    color:rgb(202, 166, 166)  
}
```

If you want to add a text shadow in that color use the text-shadow property, you can generate a text shadow directly with our [CSS Text Shadow Generator](#).

Here you see how black text with a 4 pixel rgb(202, 166, 166) colored shadow looks like.

```
.shadow{ text-shadow: 4px 4px 2px rgb(202, 166, 166) }
```

Border

The CSS property to change the border of an element to Yxy 42.5822, 0.3468, 0.3291 is called "border". The border property can be set on classes, ids or directly on the HTML element.

This example shows the color as border, it can be applied via the CSS property "border" or "border-color".

```
.border, #border, table{ border:4px solid rgb(202, 166, 166) }
```

If only the border color should be changed use the property `border-color`.

```
.border{ border-color:rgb(202, 166, 166) }
```

If you want to add a box shadow in that color use:

Here you see how a box with a 4 pixel `rgb(202, 166, 166)` colored shadow looks like.

```
.boxshadow{ -moz-box-shadow:4px 4px 4px  
4px rgb(202, 166, 166); -webkit-box-  
shadow:4px 4px 4px 4px rgb(202, 166, 166);  
box-shadow:4px 4px 4px 4px rgb(202, 166,  
166) }
```


Background

The CSS property to change the background color of an element to Yxy 42.5822, 0.3468, 0.3291 is called "background". The background property can be set on classes, ids or directly on the HTML element.

```
.background, #background, body{  
background: rgb(202, 166, 166) }
```

If only the background color should be changed can be used:

```
.background{ background-color: rgb(202,  
166, 166) }
```

This example shows the color as background, it is applied via the CSS property "background".

To optimize and compress your CSS code, you can use our [online CSS compressor and optimizer](#) based on csstidy. If you want to create a linear or radial gradient as background or border, check our [CSS Gradient Generator](#).

Hey! You found this booklet interesting? Support Converting Colors with the new Membership Option!

The pro membership hides all ads, plus gives you double the colors in the color bucket, and more awesome pro features!

[Learn more, Memberships starting at \\$2.50/m!](#)

**Follow me
on Twitter!**

@ConvertingColor