

Converting Colors

$Y_{xy}(42.6070, 0.3085, 0.3115)$

Have a look what the booklet for
Yxy(42.6070, 0.3085, 0.3115)
contains.

Yxy(42.5915, 0.3082, 0.3118)	3
<i>Conversions</i>	4
<i>Details</i>	6
<i>Harmonies</i>	12
<i>Previews</i>	24
<i>Color Blindness Simulation</i>	27
<i>CSS Examples</i>	30

Color

Yxy(42.5915, 0.3082, 0.3118)

Conversions

Conversions Part 1

Format	Color
Hex	B3ACB9
RGB	179, 172, 185
RGB Percent	70%, 67%, 73%
CMY	0.2981, 0.3255, 0.2745
CMYK	0.03, 0.07, 0.00, 0.27
HSL	272°, 9%, 70%
HSV	272°, 7%, 73%
XYZ	42.0997, 42.5915, 51.9075
YIQ	175.5750, -0.0010, 5.5270

Conversions

Conversions Part 2

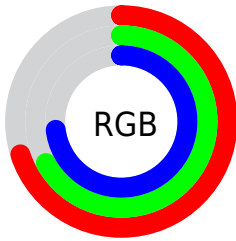
Format	Color
R_{YB}	179, 172, 185
Decimal	11775161
CIE Lab	71.28, 4.95, -5.76
CIE LCh	71, 7.593, 310.649
Yxy	42.5915, 0.3082, 0.3118
Android (android.graphics.Color)	4289965241 (0xFFB3ACB9)
YUV	175.5750, 4.6465, 3.0037
Hunter-Lab	65.2622, 0.9392, -1.4739

Details

The Yxy color $42.5915, 0.3082, 0.3118$ is a light color, and the websafe version is hex 999999 . A complement of this color would be $47.1498, 0.3170, 0.3463$, and the grayscale version is $43.1596, 0.3127, 0.3290$.

A 20% lighter version of the original color is $78.9512, 0.3093, 0.3146$, and $19.5345, 0.3064, 0.3072$ is the 20% darker color. If you saturate the color by 10%, you get $35.0456, 0.3008, 0.2857$, and if you desaturate by 10%, it is $51.1847, 0.3145, 0.3360$.

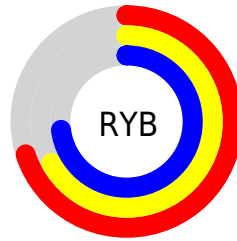
Distribution



Red (70%)

Green (67%)

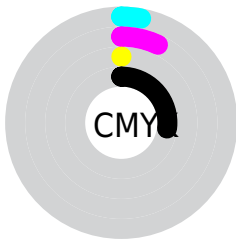
Blue (73%)



Red (70%)

Yellow (67%)

Blue (73%)

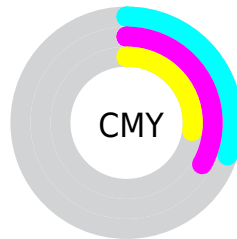


Cyan (3%)

Magenta (7%)

Yellow (0%)

Black (27%)



Cyan (30%)

Magenta (33%)

Yellow (27%)

Brightness & Saturation Gradients

These gradients show how the Yxy color 42.5915, 0.3082, 0.3118 changes by changing the brightness by 10 percent. The first figure shows a shift by +10% for each color and the second figure -10%.

Similar to the brightness gradients but the following saturation gradients show a change of the Yxy color 42.5915, 0.3082, 0.3118 by changing the saturation by 10% instead.

■ 42.5915, 0.3082,
0.3118

■ 42.5915, 0.3082,
0.3118

356.9291, 0.3105,
0.3205

■ 29.5647, 0.3076,
0.3096

■ 79.0941, 0.3091,
0.3150

■ 19.5084, 0.3068,
0.3068

103.3386, 0.3094,
0.3161

■ 12.0382, 0.3057,
0.3031

132.0913, 0.3097,
0.3171

■ 6.7697, 0.3042,
0.2978

165.7363, 0.3099,
0.3180

■ 3.3185, 0.3018,
0.2899

204.6583, 0.3101,
0.3187

■ 1.3002, 0.2975,
0.2766

249.2415, 0.3102,

■ 0.1414, 0.2676,

0.3194

0.1483

299.8703, 0.3104,
0.3199

0.0000, 0.0000,
0.0000

42.5915, 0.3082,
0.3118

42.5915, 0.3082,
0.3118

35.0456, 0.3008,
0.2857

51.1847, 0.3145,
0.3360

28.5003, 0.2923,
0.2579

60.8590, 0.3197,
0.3580

22.9131, 0.2826,
0.2291

71.6530, 0.3241,
0.3779

18.2363, 0.2717,
0.2001

83.6020, 0.3277,
0.3958

14.4182, 0.2601,
0.1722

90.5202, 0.3321,
0.4031

■ 11.4017, 0.2478,
0.1466

■ 91.9046, 0.3378,
0.4018

■ 9.1221, 0.2356,
0.1248

■ 93.3586, 0.3435,
0.4004

■ 7.5047, 0.2238,
0.1078

■ 94.8832, 0.3493,
0.3991

■ 6.4450, 0.2129,
0.0960

■ 96.2833, 0.3544,
0.3978

Harmonies

Analogous

The Analogous color harmony consists of three colors that are next to each other on the color wheel.



42.5915, 0.2985, 0.3105



42.5915, 0.3082, 0.3118



42.5915, 0.3193, 0.3174

Triad

The Triadic color harmony groups three colors that are evenly spaced from another and form a triangle on the color wheel.



42.5915, 0.3082, 0.3118



42.5915, 0.3332, 0.3436



42.5915, 0.2969, 0.3317

Complementary

The Complementary color scheme is a pair of colors which are on the opposite of each other on the color wheel.



42.5915, 0.3082, 0.3118



47.1498, 0.3170, 0.3463

Split Complementary

Split-complementary colors differ from the complementary color scheme. The scheme consists of three colors, the original color and two neighbors of the complement color.



42.5915, 0.3060, 0.3410



42.5915, 0.3082, 0.3118



42.5915, 0.3270, 0.3479

Square

The Square scheme is like the rectangle color scheme, but the four colors are evenly spaced on the color wheel.



42.5915, 0.3082, 0.3118



42.5915, 0.3339, 0.3356



42.5915, 0.3170, 0.3470



42.5915, 0.2921, 0.3218

Rectangle

The Rectangle color scheme consists of four colors that form a rectangle on the color wheel.



42.5915, 0.3082, 0.3118



42.5915, 0.3259, 0.3230



42.5915, 0.3170, 0.3470



42.5915, 0.2995, 0.3350

Sweetspot

The Sweet Spot groups the original color and five complimentary colors.



42.5933, 0.3082, 0.3118



83.7239, 0.3115, 0.3241



44.1453, 0.3021, 0.3197



18.0845, 0.3115, 0.3244



93.3107, 0.3127, 0.3290



18.7317, 0.3127, 0.3290

Same Dimension

The Same Dimension uses a secret algorithm to generate beautiful new colors.



42.5933, 0.3082, 0.3118



74.6957, 0.3074, 0.3090



43.3078, 0.3139, 0.3126



8.9507, 0.3066, 0.3060



4.2508, 0.2110, 0.0936



0.1863, 0.2387, 0.1089

Inverse Universe

The Inverse Universe completely reimagines the original color for something new.



43.0381, 0.3194, 0.3211



75.6140, 0.3205, 0.3199



46.4700, 0.3116, 0.3459



9.0795, 0.3217, 0.3185



7.4905, 0.5088, 0.2576



0.2766, 0.4481, 0.2242

Previews

White Background



This preview shows how the Yxy color 42.5915, 0.3082, 0.3118 looks on a white background.

Color Contrast Check

Large Text (above 18pt) WCAG AA × Fail

Any Text WCAG AA × Fail

Large Text (above 18pt) WCAG AAA × Fail

Any Text WCAG AAA × Fail

Black Background



This preview shows how the Yxy color 42.5915, 0.3082, 0.3118 looks on a black background.

Color Contrast Check

Large Text (above 18pt) WCAG AA ✓ Pass

Any Text WCAG AA ✓ Pass

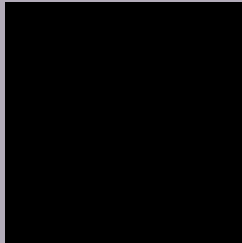
Large Text (above 18pt) WCAG AAA ✓ Pass

Any Text WCAG AAA ✓ Pass

If you want to check with other color combinations, try the [Color Contrast Checker](#).

Yxy 42.5915, 0.3082, 0.3118

Background



This preview shows how black text looks on a background with the Yxy color 42.5915, 0.3082, 0.3118.

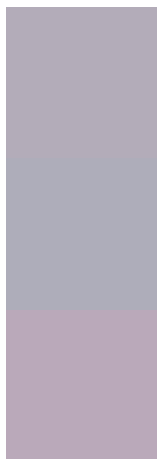


This preview shows how white text looks on a background with the Yxy color 42.5915, 0.3082, 0.3118.

Color Blindness Simulation

Color vision deficiency is a very complex topic, and I could not describe the different causes any better than Wikipedia does, so if you want to learn more, you should check out their [article about color blindness](#).

Dichromacy



Original Color

42.5915, 0.3082, 0.3118

Protanopia

42.4310, 0.3030, 0.3116

Deuteranopia

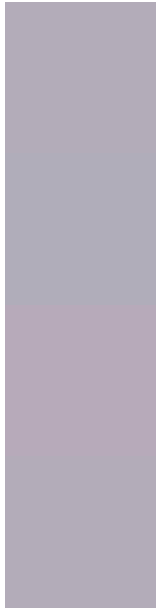
42.3602, 0.3138, 0.3069



Tritanopia

42.5915, 0.3082, 0.3118

Trichromacy



Original Color

42.5915, 0.3082, 0.3118

Protanomaly

42.6624, 0.3048, 0.3117

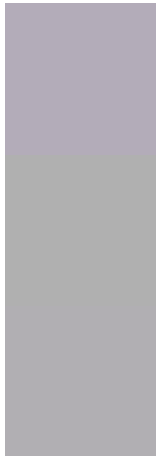
Deuteranomaly

42.3619, 0.3110, 0.3081

Tritanomaly

42.5915, 0.3082, 0.3118

Monochromacy



Original Color

42.5915, 0.3082, 0.3118

Achromatopsia

43.4154, 0.3127, 0.3290

Achromatomaly

43.2617, 0.3112, 0.3237

CSS Examples

Text

The CSS property to change the color of the text to Yxy 42.5915, 0.3082, 0.3118 is called "color". The color property can be set on classes, ids or directly on the HTML element.

This example shows how text in the color `rgb(179, 172, 185)` looks like.

```
.text, #text, p{  
    color:rgb(179, 172, 185)  
}
```

If you want to add a text shadow in that color use the text-shadow property, you can generate a text shadow directly with our [CSS Text Shadow Generator](#).

Here you see how black text with a 4 pixel rgb(179, 172, 185) colored shadow looks like.

```
.shadow{ text-shadow: 4px 4px 2px rgb(179, 172, 185) }
```

Border

The CSS property to change the border of an element to Yxy 42.5915, 0.3082, 0.3118 is called "border". The border property can be set on classes, ids or directly on the HTML element.

This example shows the color as border, it can be applied via the CSS property "border" or "border-color".

```
.border, #border, table{ border:4px solid rgb(179, 172, 185) }
```

If only the border color should be changed use the property `border-color`.

```
.border{ border-color:rgb(179, 172, 185) }
```

If you want to add a box shadow in that color use:

Here you see how a box with a 4 pixel `rgb(179, 172, 185)` colored shadow looks like.

```
.boxshadow{ -moz-box-shadow:4px 4px 4px  
4px rgb(179, 172, 185); -webkit-box-  
shadow:4px 4px 4px 4px rgb(179, 172, 185);  
box-shadow:4px 4px 4px 4px rgb(179, 172,  
185) }
```


Background

The CSS property to change the background color of an element to Yxy 42.5915, 0.3082, 0.3118 is called "background". The background property can be set on classes, ids or directly on the HTML element.

```
.background, #background, body{  
background: rgb(179, 172, 185) }
```

If only the background color should be changed can be used:

```
.background{ background-color: rgb(179,  
172, 185) }
```

This example shows the color as background, it is applied via the CSS property "background".

To optimize and compress your CSS code, you can use our [online CSS compressor and optimizer](#) based on csstidy. If you want to create a linear or radial gradient as background or border, check our [CSS Gradient Generator](#).

Hey! You found this booklet interesting? Support Converting Colors with the new Membership Option!

The pro membership hides all ads, plus gives you double the colors in the color bucket, and more awesome pro features!

[Learn more, Memberships starting at \\$2.50/m!](#)

**Follow me
on Twitter!**

@ConvertingColor