

Converting Colors

$Y_{xy}(42.6527, 0.3322, 0.3300)$

Have a look what the booklet for
Yxy(42.6527, 0.3322, 0.3300)
contains.

Yxy(42.6904, 0.3329, 0.3304)	3
Conversions	4
Details	6
Harmonies	12
Previews	24
Color Blindness Simulation	27
CSS Examples	30

Color

Yxy(42.6904, 0.3329, 0.3304)

Conversions

Conversions Part 1

Format	Color
Hex	BFAAA9
RGB	191, 170, 169
RGB Percent	75%, 67%, 66%
CMY	0.2511, 0.3333, 0.3373
CMYK	0.00, 0.11, 0.12, 0.25
HSL	3°, 15%, 71%
HSV	3°, 12%, 75%
XYZ	43.0134, 42.6904, 43.5044
YIQ	176.1650, 12.8370, 4.1410

Conversions

Conversions Part 2

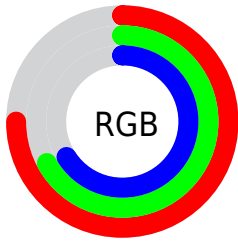
Format	Color
RYB	191, 170, 169
Decimal	12561065
CIELab	71.34, 7.39, 3.29
CIELCh	71, 8.091, 23.975
Yxy	42.6904, 0.3329, 0.3304
Android (android.graphics.Color)	4290751145 (0xFFBFAAA9)
YUV	176.1650, -3.5323, 13.0103
Hunter-Lab	65.3379, 3.1693, 6.2590

Details

The Yxy color $42.6904, 0.3329, 0.3304$ is a light color, and the websafe version is hex 999999 . A complement of this color would be $48.9904, 0.2953, 0.3276$, and the grayscale version is $43.5188, 0.3127, 0.3290$.

A 20% lighter version of the original color is $79.0064, 0.3289, 0.3301$, and $19.5596, 0.3384, 0.3309$ is the 20% darker color. If you saturate the color by 10%, you get $35.6673, 0.3550, 0.3317$, and if you desaturate by 10%, it is $50.7669, 0.3151, 0.3292$.

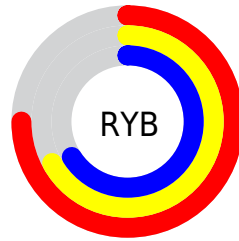
Distribution



Red (75%)

Green (67%)

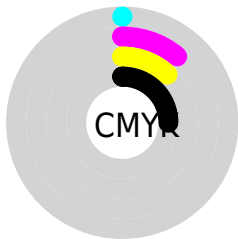
Blue (66%)



Red (75%)

Yellow (67%)

Blue (66%)

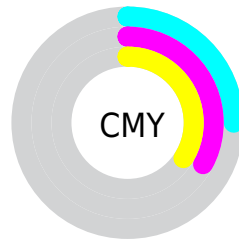


Cyan (0%)

Magenta (11%)

Yellow (12%)

Black (25%)



Cyan (25%)


Magenta (33%)


Yellow (34%)

Brightness & Saturation Gradients


These gradients show how the Yxy color 42.6904, 0.3329, 0.3304 changes by changing the brightness by 10 percent. The first figure shows a shift by +10% for each color and the second figure -10%.


Similar to the brightness gradients but the following saturation gradients show a change of the Yxy color 42.6904, 0.3329, 0.3304 by changing the saturation by 10% instead.

 42.6904, 0.3329,
0.3304

 42.6904, 0.3329,
0.3304


357.3370, 0.3226,
0.3298

 29.6423, 0.3355,
0.3305


 79.2435, 0.3291,
0.3302

 19.5672, 0.3390,
0.3307


 103.5172, 0.3277,
0.3301

 12.0809, 0.3436,
0.3309


132.3015, 0.3265,
0.3300

 6.7988, 0.3502,
0.3311

165.9810, 0.3255,
0.3300

 3.3366, 0.3604,
0.3314

204.9398, 0.3246,
0.3299

 1.3099, 0.3781,
0.3314

249.5625, 0.3239,

 0.1488, 0.6839,

0.3299

0.3161

300.2334, 0.3232,
0.3298

0.0000, 0.0000,
0.0000

42.6904, 0.3329,
0.3304

42.6904, 0.3329,
0.3304

35.6673, 0.3550,
0.3317

50.7669, 0.3151,
0.3292

29.6487, 0.3823,
0.3331

59.9318, 0.3007,
0.3281

24.5906, 0.4156,
0.3344

70.2254, 0.2890,
0.3270

20.4433, 0.4552,
0.3356

81.6842, 0.2795,
0.3261

17.1525, 0.4998,
0.3363

89.8110, 0.2757,
0.3289

■ 14.6585, 0.5463,
0.3363

■ 12.8937, 0.5888,
0.3354

■ 11.7792, 0.6205,
0.3337

■ 11.2651, 0.6368,
0.3325

Harmonies

Analogous

The Analogous color harmony consists of three colors that are next to each other on the color wheel.



42.6904, 0.3246, 0.3205



42.6904, 0.3329, 0.3304



42.6904, 0.3357, 0.3401

Triad

The Triadic color harmony groups three colors that are evenly spaced from another and form a triangle on the color wheel.



42.6904, 0.3329, 0.3304



42.6904, 0.3120, 0.3459



42.6904, 0.2935, 0.3109

Complementary

The Complementary color scheme is a pair of colors which are on the opposite of each other on the color wheel.



42.6904, 0.3329, 0.3304



48.9904, 0.2953, 0.3276

Split Complementary

Split-complementary colors differ from the complementary color scheme. The scheme consists of three colors, the original color and two neighbors of the complement color.



42.6904, 0.2903, 0.3173



42.6904, 0.3329, 0.3304



42.6904, 0.3008, 0.3377

Square

The Square scheme is like the rectangle color scheme, but the four colors are evenly spaced on the color wheel.



42.6904, 0.3329, 0.3304



42.6904, 0.3235, 0.3494



42.6904, 0.2929, 0.3271



42.6904, 0.3018, 0.3093

Rectangle

The Rectangle color scheme consists of four colors that form a rectangle on the color wheel.



42.6904, 0.3329, 0.3304



42.6904, 0.3341, 0.3453



42.6904, 0.2929, 0.3271



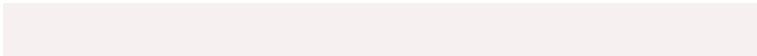
42.6904, 0.2918, 0.3125

Sweetspot

The Sweet Spot groups the original color and five complimentary colors.



42.6923, 0.3329, 0.3304



88.6083, 0.3176, 0.3294



43.1714, 0.3146, 0.3020



19.1888, 0.3189, 0.3295



97.7402, 0.3127, 0.3290



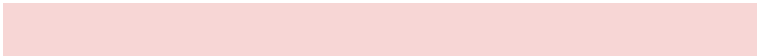
20.4902, 0.3127, 0.3290

Same Dimension

The Same Dimension uses a secret algorithm to generate beautiful new colors.



42.6923, 0.3329, 0.3304



72.8945, 0.3384, 0.3308



46.8641, 0.3312, 0.3442



9.6061, 0.3287, 0.3301



7.4400, 0.6360, 0.3332



0.3162, 0.6208, 0.3453

Inverse Universe

The Inverse Universe completely reimagines the original color for something new.



48.9904, 0.2953, 0.3276



86.5880, 0.2913, 0.3272



44.5315, 0.2950, 0.3134



10.7309, 0.2985, 0.3279



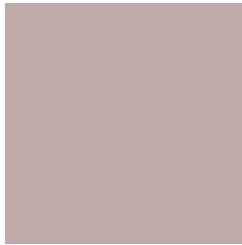
24.5079, 0.2207, 0.3145



0.9838, 0.2217, 0.3182

Previews

White Background



This preview shows how the Yxy color 42.6904, 0.3329, 0.3304 looks on a white background.

Color Contrast Check

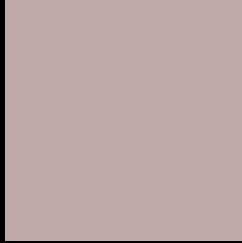
Large Text (above 18pt) WCAG AA × Fail

Any Text WCAG AA × Fail

Large Text (above 18pt) WCAG AAA × Fail

Any Text WCAG AAA × Fail

Black Background



This preview shows how the Yxy color 42.6904, 0.3329, 0.3304 looks on a black background.

Color Contrast Check

Large Text (above 18pt) WCAG AA ✓ Pass

Any Text WCAG AA ✓ Pass

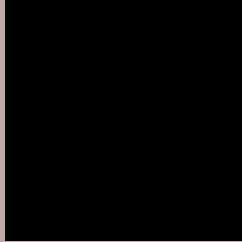
Large Text (above 18pt) WCAG AAA ✓ Pass

Any Text WCAG AAA ✓ Pass

If you want to check with other color combinations, try the [Color Contrast Checker](#).

Yxy 42.6904, 0.3329, 0.3304

Background



This preview shows how black text looks on a background with the Yxy color 42.6904, 0.3329, 0.3304.



This preview shows how white text looks on a background with the Yxy color 42.6904, 0.3329, 0.3304.

Color Blindness Simulation

Color vision deficiency is a very complex topic, and I could not describe the different causes any better than Wikipedia does, so if you want to learn more, you should check out their [article about color blindness](#).

Dichromacy



Original Color

42.6904, 0.3329, 0.3304

Protanopia

42.7961, 0.3197, 0.3331

Deuteranopia

42.7098, 0.3359, 0.3291



Tritanopia

42.6789, 0.3245, 0.3124

Trichromacy



Original Color

42.6904, 0.3329, 0.3304

Protanomaly

42.8567, 0.3243, 0.3330

Deuteranomaly

42.5780, 0.3350, 0.3291

Tritanomaly

42.7567, 0.3270, 0.3187

Monochromacy



Original Color

42.6904, 0.3329, 0.3304

Achromatopsia

43.4154, 0.3127, 0.3290

Achromatomaly

43.1130, 0.3198, 0.3304

CSS Examples

Text

The CSS property to change the color of the text to Yxy 42.6904, 0.3329, 0.3304 is called "color". The color property can be set on classes, ids or directly on the HTML element.

This example shows how text in the color `rgb(191, 170, 169)` looks like.

```
.text, #text, p{  
    color:rgb(191, 170, 169)  
}
```

If you want to add a text shadow in that color use the text-shadow property, you can generate a text shadow directly with our [CSS Text Shadow Generator](#).

Here you see how black text with a 4 pixel rgb(191, 170, 169) colored shadow looks like.

```
.shadow{ text-shadow: 4px 4px 2px rgb(191, 170, 169) }
```

Border

The CSS property to change the border of an element to Yxy 42.6904, 0.3329, 0.3304 is called "border". The border property can be set on classes, ids or directly on the HTML element.

This example shows the color as border, it can be applied via the CSS property "border" or "border-color".

```
.border, #border, table{ border:4px solid rgb(191, 170, 169) }
```

If only the border color should be changed use the property `border-color`.

```
.border{ border-color:rgb(191, 170, 169) }
```

If you want to add a box shadow in that color use:

Here you see how a box with a 4 pixel `rgb(191, 170, 169)` colored shadow looks like.

```
.boxshadow{ -moz-box-shadow:4px 4px 4px  
4px rgb(191, 170, 169); -webkit-box-  
shadow:4px 4px 4px 4px rgb(191, 170, 169);  
box-shadow:4px 4px 4px 4px rgb(191, 170,  
169) }
```


Background

The CSS property to change the background color of an element to Yxy 42.6904, 0.3329, 0.3304 is called "background". The background property can be set on classes, ids or directly on the HTML element.

```
.background, #background, body{  
background: rgb(191, 170, 169) }
```

If only the background color should be changed can be used:

```
.background{ background-color: rgb(191,  
170, 169) }
```

This example shows the color as background, it is applied via the CSS property "background".

To optimize and compress your CSS code, you can use our [online CSS compressor and optimizer](#) based on csstidy. If you want to create a linear or radial gradient as background or border, check our [CSS Gradient Generator](#).

Hey! You found this booklet interesting? Support Converting Colors with the new Membership Option!

The pro membership hides all ads, plus gives you double the colors in the color bucket, and more awesome pro features!

[Learn more, Memberships starting at \\$2.50/m!](#)

**Follow me
on Twitter!**

@ConvertingColor