

Converting Colors

$Y_{xy}(42.7295, 0.3435, 0.3329)$

Have a look what the booklet for
Yxy(42.7295, 0.3435, 0.3329)
contains.

Yxy(42.7276, 0.3435, 0.3329)	3
Conversions	4
Details	6
Harmonies	12
Previews	24
Color Blindness Simulation	27
CSS Examples	30

Color

Yxy(42.7276, 0.3435, 0.3329)

Conversions

Conversions Part 1

Format	Color
Hex	C6A8A5
RGB	198, 168, 165
RGB Percent	78%, 66%, 65%
CMY	0.2235, 0.3412, 0.3528
CMYK	0.00, 0.15, 0.17, 0.22
HSL	5°, 22%, 71%
HSV	5°, 17%, 78%
XYZ	44.0881, 42.7276, 41.5339
YIQ	176.6280, 18.8430, 5.4270

Conversions

Conversions Part 2

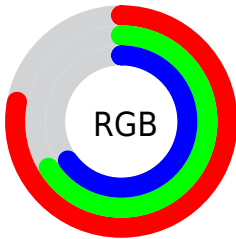
Format	Color
R_{YB}	198, 168, 165
Decimal	13019301
CIE Lab	71.37, 10.45, 5.59
CIE LCh	71, 11.855, 28.133
Yxy	42.7276, 0.3435, 0.3329
Android (android.graphics.Color)	4291209381 (0xFFC6A8A5)
YUV	176.6280, -5.7326, 18.7432
Hunter-Lab	65.3664, 6.0030, 8.0834

Details

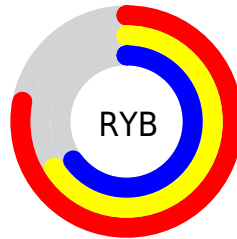
The Yxy color $42.7276, 0.3435, 0.3329$ is a light color, and the websafe version is hex $CC9999$. A complement of this color would be $51.1331, 0.2876, 0.3251$, and the grayscale version is $43.7869, 0.3127, 0.3290$.

A 20% lighter version of the original color is $79.2027, 0.3377, 0.3321$, and $19.6123, 0.3534, 0.3344$ is the 20% darker color. If you saturate the color by 10%, you get $35.8643, 0.3678, 0.3354$, and if you desaturate by 10%, it is $50.6285, 0.3238, 0.3305$.

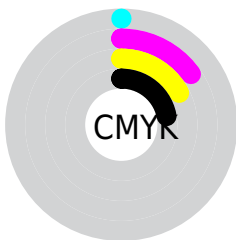
Distribution



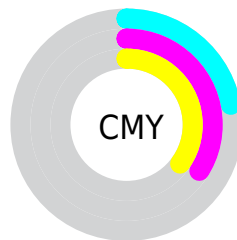
- Red (78%)
- Green (66%)
- Blue (65%)



- Red (78%)
- Yellow (66%)
- Blue (65%)



- Cyan (0%)
- Magenta (15%)
- Yellow (17%)
- Black (22%)




- Cyan (22%)
- Magenta (34%)
- Yellow (35%)

Brightness & Saturation Gradients


These gradients show how the Yxy color 42.7276, 0.3435, 0.3329 changes by changing the brightness by 10 percent. The first figure shows a shift by +10% for each color and the second figure -10%.


Similar to the brightness gradients but the following saturation gradients show a change of the Yxy color 42.7276, 0.3435, 0.3329 by changing the saturation by 10% instead.


 42.7276, 0.3435,
0.3329

 42.7276, 0.3435,
0.3329

357.4903, 0.3278,
0.3311

 29.6714, 0.3475,
0.3333


 79.2996, 0.3377,
0.3323

 19.5893, 0.3528,
0.3338


 103.5843, 0.3356,
0.3320

 12.0969, 0.3598,
0.3344


132.3806, 0.3338,
0.3318

 6.8097, 0.3700,
0.3351

166.0729, 0.3322,
0.3316

 3.3434, 0.3855,
0.3359

205.0457, 0.3309,
0.3315

 1.3135, 0.4126,
0.3365

249.6832, 0.3297,

 0.1516, 0.7248,

0.3313

0.2752

300.3700, 0.3287,
0.3312

0.0000, 0.0000,
0.0000

42.7276, 0.3435,
0.3329

42.7276, 0.3435,
0.3329

35.8643, 0.3678,
0.3354

50.6285, 0.3238,
0.3305

29.9899, 0.3975,
0.3380

59.6015, 0.3077,
0.3283

25.0607, 0.4330,
0.3403

69.6867, 0.2947,
0.3263

21.0271, 0.4742,
0.3421

80.9204, 0.2840,
0.3244

17.8353, 0.5191,
0.3429

90.7481, 0.2794,
0.3289

■ 15.4254, 0.5635,
0.3422

■ 13.7300, 0.6015,
0.3398

■ 12.6689, 0.6272,
0.3360

■ 12.4346, 0.6336,
0.3351

Harmonies

Analogous

The Analogous color harmony consists of three colors that are next to each other on the color wheel.



42.7276, 0.3321, 0.3184



42.7276, 0.3435, 0.3329



42.7276, 0.3463, 0.3468

Triad

The Triadic color harmony groups three colors that are evenly spaced from another and form a triangle on the color wheel.



42.7276, 0.3435, 0.3329



42.7276, 0.3091, 0.3527



42.7276, 0.2859, 0.3017

Complementary

The Complementary color scheme is a pair of colors which are on the opposite of each other on the color wheel.



42.7276, 0.3435, 0.3329



51.1331, 0.2876, 0.3251

Split Complementary

Split-complementary colors differ from the complementary color scheme. The scheme consists of three colors, the original color and two neighbors of the complement color.



42.7276, 0.2802, 0.3100



42.7276, 0.3435, 0.3329



42.7276, 0.2933, 0.3397

Square

The Square scheme is like the rectangle color scheme, but the four colors are evenly spaced on the color wheel.



42.7276, 0.3435, 0.3329



42.7276, 0.3262, 0.3589



42.7276, 0.2829, 0.3238



42.7276, 0.2988, 0.3007

Rectangle

The Rectangle color scheme consists of four colors that form a rectangle on the color wheel.



42.7276, 0.3435, 0.3329



42.7276, 0.3430, 0.3540



42.7276, 0.2829, 0.3238



42.7276, 0.2831, 0.3037

Sweetspot

The Sweet Spot groups the original color and five complimentary colors.



42.7295, 0.3435, 0.3329



92.0248, 0.3210, 0.3301



42.8810, 0.3170, 0.2915



19.4657, 0.3222, 0.3303



0.0000, 0.0000, 0.0000



21.4041, 0.3127, 0.3290

Same Dimension

The Same Dimension uses a secret algorithm to generate beautiful new colors.



42.7295, 0.3435, 0.3329



71.0183, 0.3518, 0.3338



49.1199, 0.3402, 0.3534



10.7878, 0.3287, 0.3311



8.1403, 0.6323, 0.3362



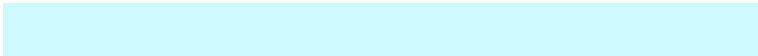
0.4394, 0.6081, 0.3553

Inverse Universe

The Inverse Universe completely reimagines the original color for something new.



51.1331, 0.2876, 0.3251



88.6853, 0.2824, 0.3241



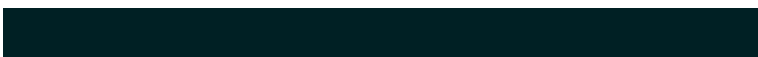
44.2301, 0.2867, 0.3034



11.8981, 0.2984, 0.3269



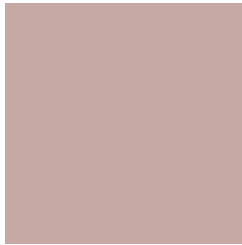
23.9950, 0.2169, 0.3008



1.1851, 0.2187, 0.3072

Previews

White Background



This preview shows how the Yxy color 42.7276, 0.3435, 0.3329 looks on a white background.

Color Contrast Check

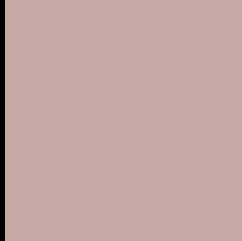
Large Text (above 18pt) WCAG AA × Fail

Any Text WCAG AA × Fail

Large Text (above 18pt) WCAG AAA × Fail

Any Text WCAG AAA × Fail

Black Background



This preview shows how the Yxy color 42.7276, 0.3435, 0.3329 looks on a black background.

Color Contrast Check

Large Text (above 18pt) WCAG AA ✓ Pass

Any Text WCAG AA ✓ Pass

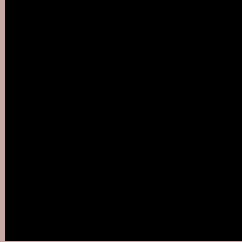
Large Text (above 18pt) WCAG AAA ✓ Pass

Any Text WCAG AAA ✓ Pass

If you want to check with other color combinations, try the [Color Contrast Checker](#).

Yxy 42.7276, 0.3435, 0.3329

Background



This preview shows how black text looks on a background with the Yxy color 42.7276, 0.3435, 0.3329.



This preview shows how white text looks on a background with the Yxy color 42.7276, 0.3435, 0.3329.

Color Blindness Simulation

Color vision deficiency is a very complex topic, and I could not describe the different causes any better than Wikipedia does, so if you want to learn more, you should check out their [article about color blindness](#).

Dichromacy



Original Color

42.7276, 0.3435, 0.3329

Protanopia

42.8026, 0.3231, 0.3371

Deuteranopia

42.8283, 0.3414, 0.3343



Tritanopia

42.8065, 0.3330, 0.3127

Trichromacy



Original Color

42.7276, 0.3435, 0.3329

Protanomaly

42.8599, 0.3307, 0.3357

Deuteranomaly

42.9629, 0.3424, 0.3342

Tritanomaly

42.8355, 0.3364, 0.3202

Monochromacy



Original Color

42.7276, 0.3435, 0.3329

Achromatopsia

43.9657, 0.3127, 0.3290

Achromatomaly

43.6035, 0.3234, 0.3304

CSS Examples

Text

The CSS property to change the color of the text to Yxy 42.7276, 0.3435, 0.3329 is called "color". The color property can be set on classes, ids or directly on the HTML element.

This example shows how text in the color `rgb(198, 168, 165)` looks like.

```
.text, #text, p{  
    color:rgb(198, 168, 165)  
}
```

If you want to add a text shadow in that color use the text-shadow property, you can generate a text shadow directly with our [CSS Text Shadow Generator](#).

Here you see how black text with a 4 pixel rgb(198, 168, 165) colored shadow looks like.

```
.shadow{ text-shadow: 4px 4px 2px rgb(198, 168, 165) }
```

Border

The CSS property to change the border of an element to Yxy 42.7276, 0.3435, 0.3329 is called "border". The border property can be set on classes, ids or directly on the HTML element.

This example shows the color as border, it can be applied via the CSS property "border" or "border-color".

```
.border, #border, table{ border:4px solid rgb(198, 168, 165) }
```

If only the border color should be changed use the property `border-color`.

```
.border{ border-color:rgb(198, 168, 165) }
```

If you want to add a box shadow in that color use:

Here you see how a box with a 4 pixel `rgb(198, 168, 165)` colored shadow looks like.

```
.boxshadow{ -moz-box-shadow:4px 4px 4px  
4px rgb(198, 168, 165); -webkit-box-  
shadow:4px 4px 4px 4px rgb(198, 168, 165);  
box-shadow:4px 4px 4px 4px rgb(198, 168,  
165) }
```


Background

The CSS property to change the background color of an element to Yxy 42.7276, 0.3435, 0.3329 is called "background". The background property can be set on classes, ids or directly on the HTML element.

```
.background, #background, body{  
background: rgb(198, 168, 165) }
```

If only the background color should be changed can be used:

```
.background{ background-color: rgb(198,  
168, 165) }
```

This example shows the color as background, it is applied via the CSS property "background".

To optimize and compress your CSS code, you can use our [online CSS compressor and optimizer](#) based on csstidy. If you want to create a linear or radial gradient as background or border, check our [CSS Gradient Generator](#).

Hey! You found this booklet interesting? Support Converting Colors with the new Membership Option!

The pro membership hides all ads, plus gives you double the colors in the color bucket, and more awesome pro features!

[Learn more, Memberships starting at \\$2.50/m!](#)

**Follow me
on Twitter!**

@ConvertingColor