

Converting Colors

$Yxy(42.8031, 0.3400, 0.3374)$

Have a look what the booklet for
Yxy(42.8031, 0.3400, 0.3374)
contains.

| | |
|---|----|
| Yxy(42.7672, 0.3393, 0.3369) | 3 |
| Conversions | 4 |
| Details | 6 |
| Harmonies | 12 |
| Previews | 24 |
| Color Blindness Simulation | 27 |
| CSS Examples | 30 |

Color

Yxy(42.7672, 0.3393, 0.3369)

Conversions

Conversions Part 1

| Format | Color |
|---------------|---------------------------|
| Hex | C1AAA4 |
| RGB | 193, 170, 164 |
| RGB Percent | 76%, 67%, 64% |
| CMY | 0.2430, 0.3333, 0.3569 |
| CMYK | 0.00, 0.12, 0.15, 0.24 |
| HSL | 12°, 19%, 70% |
| HSV | 12°, 15%, 76% |
| XYZ | 43.0719, 42.7672, 41.1042 |
| YIQ | 176.1930, 15.6340, 3.0100 |

Conversions

Conversions Part 2

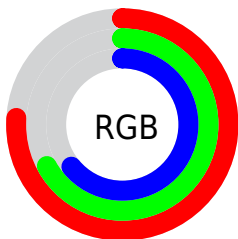
| Format | Color |
|-------------------------------------|-------------------------------|
| R_{YB} | 193, 172, 164 |
| Decimal | 12692132 |
| CIE Lab | 71.40, 7.34, 6.14 |
| CIE LCh | 71, 9.569, 39.901 |
| Yxy | 42.7672, 0.3393, 0.3369 |
| Android (android.graphics.Color) | 4290882212 (0xFFC1AAA4) |
| YUV | 176.1930, -6.0111, 14.7397 |
| Hunter-Lab | 65.3966, 3.1205, 8.5117 |

Details

The Yxy color **42.7672, 0.3393, 0.3369** is a light color, and the websafe version is hex **CC9999**. A complement of this color would be **47.2937, 0.2899, 0.3210**, and the grayscale version is **43.5498, 0.3127, 0.3290**.

A 20% lighter version of the original color is **79.2889, 0.3345, 0.3352**, and **19.6157, 0.3473, 0.3398** is the 20% darker color. If you saturate the color by 10%, you get **36.7135, 0.3616, 0.3426**, and if you desaturate by 10%, it is **49.5993, 0.3208, 0.3316**.

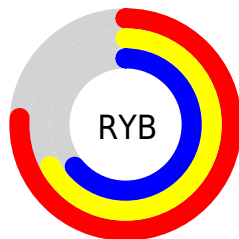
Distribution



Red (76%)

Green (67%)

Blue (64%)



Red (76%)

Yellow (67%)

Blue (64%)

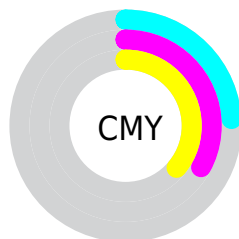


Cyan (0%)

Magenta (12%)

Yellow (15%)

Black (24%)



Cyan (24%)


Magenta (33%)


Yellow (36%)

Brightness & Saturation Gradients


These gradients show how the Yxy color 42.7672, 0.3393, 0.3369 changes by changing the brightness by 10 percent. The first figure shows a shift by +10% for each color and the second figure -10%.

Similar to the brightness gradients but the following saturation gradients show a change of the Yxy color 42.7672, 0.3393, 0.3369 by changing the saturation by 10% instead.


 42.7672, 0.3393,
0.3369


 42.7672, 0.3393,
0.3369


357.6535, 0.3257,
0.3330

 29.7025, 0.3428,
0.3378


 79.3594, 0.3343,
0.3355

 19.6129, 0.3473,
0.3390


 103.6558, 0.3325,
0.3350

 12.1140, 0.3534,
0.3406


132.4648, 0.3309,
0.3345

 6.8213, 0.3621,
0.3427

166.1708, 0.3296,
0.3342

 3.3506, 0.3755,
0.3457

205.1583, 0.3284,
0.3338

 1.3174, 0.3988,
0.3501

249.8117, 0.3274,

 0.1546, 0.6784,

0.3335

0.3216

300.5153, 0.3265,
0.3333

0.0000, 0.0000,
0.0000

42.7672, 0.3393,
0.3369

42.7672, 0.3393,
0.3369

36.7135, 0.3616,
0.3426

49.5993, 0.3208,
0.3316

31.4048, 0.3883,
0.3483

57.2301, 0.3055,
0.3266

26.8137, 0.4198,
0.3538

65.6867, 0.2927,
0.3220

22.9091, 0.4561,
0.3584

74.9927, 0.2821,
0.3179

19.6574, 0.4960,
0.3614

84.8113, 0.2760,
0.3199

■ 17.0221, 0.5369,
0.3617

■ 90.0806, 0.2768,
0.3289

■ 14.9631, 0.5748,
0.3586

■ 13.4349, 0.6048,
0.3519

■ 12.8517, 0.6169,
0.3484

Harmonies

Analogous

The Analogous color harmony consists of three colors that are next to each other on the color wheel.



42.7672, 0.3326, 0.3250



42.7672, 0.3393, 0.3369



42.7672, 0.3386, 0.3471

Triad

The Triadic color harmony groups three colors that are evenly spaced from another and form a triangle on the color wheel.



42.7672, 0.3393, 0.3369



42.7672, 0.3045, 0.3445



42.7672, 0.2946, 0.3059

Complementary

The Complementary color scheme is a pair of colors which are on the opposite of each other on the color wheel.



42.7672, 0.3393, 0.3369



47.2937, 0.2899, 0.3210

Split Complementary

Split-complementary colors differ from the complementary color scheme. The scheme consists of three colors, the original color and two neighbors of the complement color.



42.7672, 0.2874, 0.3104



42.7672, 0.3393, 0.3369



42.7672, 0.2931, 0.3327

Square

The Square scheme is like the rectangle color scheme, but the four colors are evenly spaced on the color wheel.



42.7672, 0.3393, 0.3369



42.7672, 0.3183, 0.3519



42.7672, 0.2869, 0.3202



42.7672, 0.3066, 0.3074

Rectangle

The Rectangle color scheme consists of four colors that form a rectangle on the color wheel.



42.7672, 0.3393, 0.3369



42.7672, 0.3341, 0.3515



42.7672, 0.2869, 0.3202



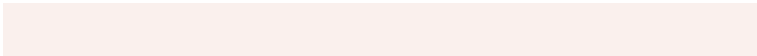
42.7672, 0.2915, 0.3067

Sweetspot

The Sweet Spot groups the original color and five complimentary colors.



42.7691, 0.3393, 0.3369



88.7568, 0.3209, 0.3316



41.4873, 0.3195, 0.2994



18.8456, 0.3221, 0.3319



97.7402, 0.3127, 0.3290



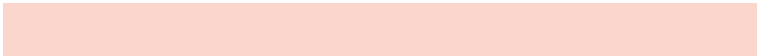
20.4902, 0.3127, 0.3290

Same Dimension

The Same Dimension uses a secret algorithm to generate beautiful new colors.



42.7691, 0.3393, 0.3369



72.9125, 0.3461, 0.3387



48.4330, 0.3366, 0.3551



10.4078, 0.3284, 0.3338



8.6402, 0.6148, 0.3500



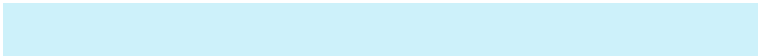
0.4746, 0.5718, 0.3842

Inverse Universe

The Inverse Universe completely reimagines the original color for something new.



47.2937, 0.2899, 0.3210



82.5378, 0.2850, 0.3191



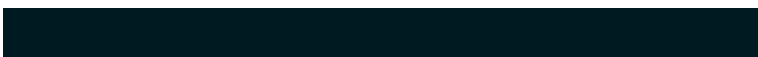
41.5173, 0.2892, 0.3015



11.0634, 0.2984, 0.3241



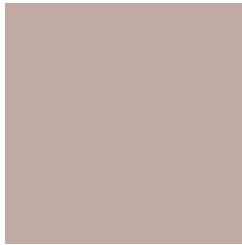
17.8531, 0.2061, 0.2619



0.8627, 0.2107, 0.2785

Previews

White Background



This preview shows how the Yxy color 42.7672, 0.3393, 0.3369 looks on a white background.

Color Contrast Check

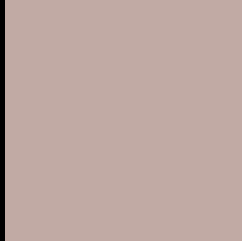
Large Text (above 18pt) WCAG AA × Fail

Any Text WCAG AA × Fail

Large Text (above 18pt) WCAG AAA × Fail

Any Text WCAG AAA × Fail

Black Background



This preview shows how the Yxy color 42.7672, 0.3393, 0.3369 looks on a black background.

Color Contrast Check

Large Text (above 18pt) WCAG AA ✓ Pass

Any Text WCAG AA ✓ Pass

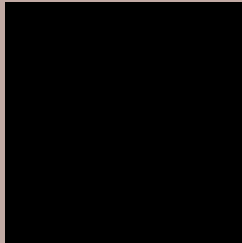
Large Text (above 18pt) WCAG AAA ✓ Pass

Any Text WCAG AAA ✓ Pass

If you want to check with other color combinations, try the [Color Contrast Checker](#).

Yxy 42.7672, 0.3393, 0.3369

Background



This preview shows how black text looks on a background with the Yxy color 42.7672, 0.3393, 0.3369.



This preview shows how white text looks on a background with the Yxy color 42.7672, 0.3393, 0.3369.

Color Blindness Simulation

Color vision deficiency is a very complex topic, and I could not describe the different causes any better than Wikipedia does, so if you want to learn more, you should check out their [article about color blindness](#).

Dichromacy



Original Color

42.7672, 0.3393, 0.3369

Protanopia

42.7286, 0.3248, 0.3398

Deuteranopia

42.7920, 0.3423, 0.3356



Tritanopia

42.5757, 0.3264, 0.3112

Trichromacy



Original Color

42.7672, 0.3393, 0.3369

Protanomaly

42.9180, 0.3304, 0.3397

Deuteranomaly

42.6584, 0.3414, 0.3356

Tritanomaly

42.5697, 0.3307, 0.3200

Monochromacy



Original Color

42.7672, 0.3393, 0.3369

Achromatopsia

43.4154, 0.3127, 0.3290

Achromatomaly

43.1957, 0.3215, 0.3317

CSS Examples

Text

The CSS property to change the color of the text to Yxy 42.7672, 0.3393, 0.3369 is called "color". The color property can be set on classes, ids or directly on the HTML element.

This example shows how text in the color `rgb(193, 170, 164)` looks like.

```
.text, #text, p{  
    color:rgb(193, 170, 164)  
}
```

If you want to add a text shadow in that color use the text-shadow property, you can generate a text shadow directly with our [CSS Text Shadow Generator](#).

Here you see how black text with a 4 pixel rgb(193, 170, 164) colored shadow looks like.

```
.shadow{ text-shadow: 4px 4px 2px rgb(193, 170, 164) }
```

Border

The CSS property to change the border of an element to Yxy 42.7672, 0.3393, 0.3369 is called "border". The border property can be set on classes, ids or directly on the HTML element.

This example shows the color as border, it can be applied via the CSS property "border" or "border-color".

```
.border, #border, table{ border:4px solid rgb(193, 170, 164) }
```

If only the border color should be changed use the property `border-color`.

```
.border{ border-color:rgb(193, 170, 164) }
```

If you want to add a box shadow in that color use:

Here you see how a box with a 4 pixel `rgb(193, 170, 164)` colored shadow looks like.

```
.boxshadow{ -moz-box-shadow:4px 4px 4px  
4px rgb(193, 170, 164); -webkit-box-  
shadow:4px 4px 4px 4px rgb(193, 170, 164);  
box-shadow:4px 4px 4px 4px rgb(193, 170,  
164) }
```


Background

The CSS property to change the background color of an element to Yxy 42.7672, 0.3393, 0.3369 is called "background". The background property can be set on classes, ids or directly on the HTML element.

```
.background, #background, body{  
background: rgb(193, 170, 164) }
```

If only the background color should be changed can be used:

```
.background{ background-color: rgb(193,  
170, 164) }
```

This example shows the color as background, it is applied via the CSS property "background".

To optimize and compress your CSS code, you can use our [online CSS compressor and optimizer](#) based on csstidy. If you want to create a linear or radial gradient as background or border, check our [CSS Gradient Generator](#).

Hey! You found this booklet interesting? Support Converting Colors with the new Membership Option!

The pro membership hides all ads, plus gives you double the colors in the color bucket, and more awesome pro features!

[Learn more, Memberships starting at \\$2.50/m!](#)

**Follow me
on Twitter!**

@ConvertingColor