

Converting Colors

$Y_{xy}(42.9187, 0.3234, 0.3295)$

Have a look what the booklet for
Yxy(42.9187, 0.3234, 0.3295)
contains.

Yxy(43.0560, 0.3235, 0.3304)	3
<i>Conversions</i>	4
<i>Details</i>	6
<i>Harmonies</i>	12
<i>Previews</i>	24
<i>Color Blindness Simulation</i>	27
<i>CSS Examples</i>	30

Color

Yxy(43.0560, 0.3235, 0.3304)

Conversions

Conversions Part 1

Format	Color
Hex	B8ADAC
RGB	184, 173, 172
RGB Percent	72%, 68%, 67%
CMY	0.2784, 0.3216, 0.3256
CMYK	0.00, 0.06, 0.07, 0.28
HSL	5°, 8%, 70%
HSV	5°, 7%, 72%
XYZ	42.1568, 43.0560, 45.1019
YIQ	176.1750, 6.8770, 2.0210

Conversions

Conversions Part 2

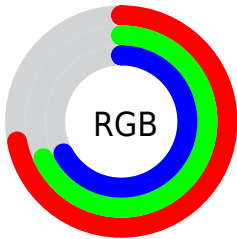
Format	Color
RYB	184, 173, 172
Decimal	12103084
CIELab	71.59, 3.76, 1.93
CIELCh	72, 4.225, 27.255
Yxy	43.0560, 0.3235, 0.3304
Android (android.graphics.Color)	4290293164 (0xFFB8ADAC)
YUV	176.1750, -2.0583, 6.8625
Hunter-Lab	65.6171, -0.1494, 5.1789

Details

The Yxy color **43.0560, 0.3235, 0.3304** is a light color, and the websafe version is hex **999999**. A complement of this color would be **46.0864, 0.3027, 0.3276**, and the grayscale version is **43.5211, 0.3127, 0.3290**.

A 20% lighter version of the original color is **79.5581, 0.3217, 0.3301**, and **19.8561, 0.3264, 0.3309** is the 20% darker color. If you saturate the color by 10%, you get **36.3493, 0.3431, 0.3327**, and if you desaturate by 10%, it is **50.6764, 0.3076, 0.3283**.

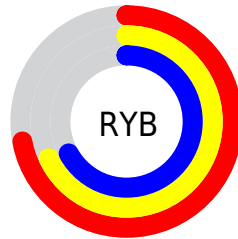
Distribution



Red (72%)

Green (68%)

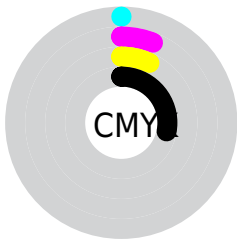
Blue (67%)



Red (72%)

Yellow (68%)

Blue (67%)

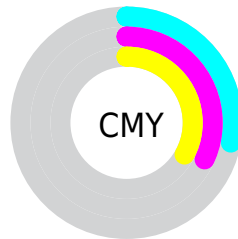


Cyan (0%)

Magenta (6%)

Yellow (7%)

Black (28%)



Cyan (28%)

Magenta (32%)

Yellow (33%)

Brightness & Saturation Gradients

These gradients show how the Yxy color 43.0560, 0.3235, 0.3304 changes by changing the brightness by 10 percent. The first figure shows a shift by +10% for each color and the second figure -10%.

Similar to the brightness gradients but the following saturation gradients show a change of the Yxy color 43.0560, 0.3235, 0.3304 by changing the saturation by 10% instead.

■ 43.0560, 0.3235,
0.3304

■ 43.0560, 0.3235,
0.3304

358.8420, 0.3180,
0.3297

■ 29.9291, 0.3249,
0.3306

■ 79.7954, 0.3215,
0.3302

■ 19.7847, 0.3267,
0.3308

104.1766, 0.3207,
0.3301

■ 12.2387, 0.3292,
0.3311

133.0780, 0.3201,
0.3300

■ 6.9064, 0.3326,
0.3314

166.8840, 0.3196,
0.3299

■ 3.4037, 0.3380,
0.3320

205.9790, 0.3191,
0.3299

■ 1.3459, 0.3472,
0.3328

250.7474, 0.3187,

■ 0.1764, 0.5266,

0.3298

0.3581

301.5736, 0.3183,
0.3298

0.0000, 0.0000,
0.0000

43.0560, 0.3235,
0.3304

43.0560, 0.3235,
0.3304

36.3493, 0.3431,
0.3327

50.6764, 0.3076,
0.3283

30.5167, 0.3672,
0.3351

59.2373, 0.2946,
0.3264

25.5238, 0.3966,
0.3375

68.7710, 0.2840,
0.3246

21.3319, 0.4319,
0.3398

79.3069, 0.2753,
0.3231

17.8994, 0.4728,
0.3415

88.9320, 0.2721,
0.3289

■ 15.1806, 0.5175,
0.3423

■ 13.1251, 0.5620,
0.3417

■ 11.6759, 0.6003,
0.3394

■ 10.7655, 0.6266,
0.3359

Harmonies

Analogous

The Analogous color harmony consists of three colors that are next to each other on the color wheel.



43.0560, 0.3195, 0.3251



43.0560, 0.3235, 0.3304



43.0560, 0.3246, 0.3354

Triad

The Triadic color harmony groups three colors that are evenly spaced from another and form a triangle on the color wheel.



43.0560, 0.3235, 0.3304



43.0560, 0.3117, 0.3374



43.0560, 0.3030, 0.3193

Complementary

The Complementary color scheme is a pair of colors which are on the opposite of each other on the color wheel.



43.0560, 0.3235, 0.3304



46.0864, 0.3027, 0.3276

Split Complementary

Split-complementary colors differ from the complementary color scheme. The scheme consists of three colors, the original color and two neighbors of the complement color.



43.0560, 0.3010, 0.3225



43.0560, 0.3235, 0.3304



43.0560, 0.3060, 0.3330

Square

The Square scheme is like the rectangle color scheme, but the four colors are evenly spaced on the color wheel.



43.0560, 0.3235, 0.3304



43.0560, 0.3177, 0.3395



43.0560, 0.3021, 0.3275



43.0560, 0.3076, 0.3188

Rectangle

The Rectangle color scheme consists of four colors that form a rectangle on the color wheel.



43.0560, 0.3235, 0.3304



43.0560, 0.3235, 0.3379



43.0560, 0.3021, 0.3275



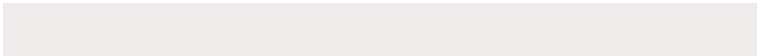
43.0560, 0.3020, 0.3201

Sweetspot

The Sweet Spot groups the original color and five complimentary colors.



43.0579, 0.3235, 0.3304



84.0644, 0.3159, 0.3294



43.1044, 0.3143, 0.3146



18.1541, 0.3157, 0.3294



93.3107, 0.3127, 0.3290



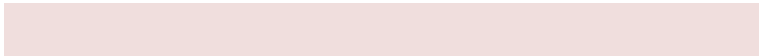
18.7317, 0.3127, 0.3290

Same Dimension

The Same Dimension uses a secret algorithm to generate beautiful new colors.



43.0579, 0.3235, 0.3304



76.0019, 0.3263, 0.3308



45.4075, 0.3228, 0.3383



9.1330, 0.3286, 0.3310



7.3204, 0.6323, 0.3361



0.2999, 0.6047, 0.3581

Inverse Universe

The Inverse Universe completely reimagines the original color for something new.



46.0864, 0.3027, 0.3276



82.7504, 0.3003, 0.3272



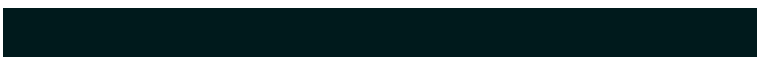
43.6676, 0.3028, 0.3196



10.0750, 0.2985, 0.3270



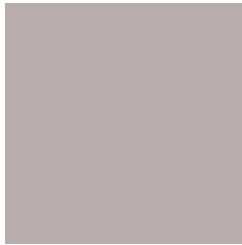
21.7854, 0.2173, 0.3022



0.8070, 0.2194, 0.3097

Previews

White Background



This preview shows how the Yxy color 43.0560, 0.3235, 0.3304 looks on a white background.

Color Contrast Check

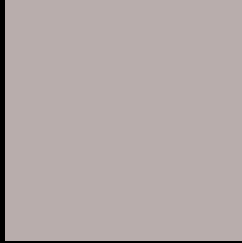
Large Text (above 18pt) WCAG AA × Fail

Any Text WCAG AA × Fail

Large Text (above 18pt) WCAG AAA × Fail

Any Text WCAG AAA × Fail

Black Background



This preview shows how the Yxy color 43.0560, 0.3235, 0.3304 looks on a black background.

Color Contrast Check

Large Text (above 18pt) WCAG AA ✓ Pass

Any Text WCAG AA ✓ Pass

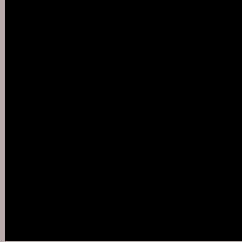
Large Text (above 18pt) WCAG AAA ✓ Pass

Any Text WCAG AAA ✓ Pass

If you want to check with other color combinations, try the [Color Contrast Checker](#).

Yxy 43.0560, 0.3235, 0.3304

Background



This preview shows how black text looks on a background with the Yxy color 43.0560, 0.3235, 0.3304.



This preview shows how white text looks on a background with the Yxy color 43.0560, 0.3235, 0.3304.

Color Blindness Simulation

Color vision deficiency is a very complex topic, and I could not describe the different causes any better than Wikipedia does, so if you want to learn more, you should check out their [article about color blindness](#).

Dichromacy



Original Color

43.0560, 0.3235, 0.3304

Protanopia

43.2608, 0.3179, 0.3317

Deuteranopia

43.1040, 0.3313, 0.3252



Tritanopia

43.0677, 0.3145, 0.3108

Trichromacy



Original Color

43.0560, 0.3235, 0.3304

Protanomaly

43.1130, 0.3198, 0.3304

Deuteranomaly

43.0901, 0.3283, 0.3264

Tritanomaly

43.1146, 0.3177, 0.3185

Monochromacy



Original Color

43.0560, 0.3235, 0.3304

Achromatopsia

43.4154, 0.3127, 0.3290

Achromatomaly

43.3388, 0.3163, 0.3290

CSS Examples

Text

The CSS property to change the color of the text to Yxy 43.0560, 0.3235, 0.3304 is called "color". The color property can be set on classes, ids or directly on the HTML element.

This example shows how text in the color `rgb(184, 173, 172)` looks like.

```
.text, #text, p{  
    color:rgb(184, 173, 172)  
}
```

If you want to add a text shadow in that color use the text-shadow property, you can generate a text shadow directly with our [CSS Text Shadow Generator](#).

Here you see how black text with a 4 pixel rgb(184, 173, 172) colored shadow looks like.

```
.shadow{ text-shadow: 4px 4px 2px rgb(184, 173, 172) }
```

Border

The CSS property to change the border of an element to Yxy 43.0560, 0.3235, 0.3304 is called "border". The border property can be set on classes, ids or directly on the HTML element.

This example shows the color as border, it can be applied via the CSS property "border" or "border-color".

```
.border, #border, table{ border:4px solid rgb(184, 173, 172) }
```

If only the border color should be changed use the property `border-color`.

```
.border{ border-color:rgb(184, 173, 172) }
```

If you want to add a box shadow in that color use:

Here you see how a box with a 4 pixel `rgb(184, 173, 172)` colored shadow looks like.

```
.boxshadow{ -moz-box-shadow:4px 4px 4px  
4px rgb(184, 173, 172); -webkit-box-  
shadow:4px 4px 4px 4px rgb(184, 173, 172);  
box-shadow:4px 4px 4px 4px rgb(184, 173,  
172) }
```


Background

The CSS property to change the background color of an element to Yxy 43.0560, 0.3235, 0.3304 is called "background". The background property can be set on classes, ids or directly on the HTML element.

```
.background, #background, body{  
background: rgb(184, 173, 172) }
```

If only the background color should be changed can be used:

```
.background{ background-color: rgb(184,  
173, 172) }
```

This example shows the color as background, it is applied via the CSS property "background".

To optimize and compress your CSS code, you can use our [online CSS compressor and optimizer](#) based on csstidy. If you want to create a linear or radial gradient as background or border, check our [CSS Gradient Generator](#).

Hey! You found this booklet interesting? Support Converting Colors with the new Membership Option!

The pro membership hides all ads, plus gives you double the colors in the color bucket, and more awesome pro features!

[Learn more, Memberships starting at \\$2.50/m!](#)

**Follow me
on Twitter!**

@ConvertingColor